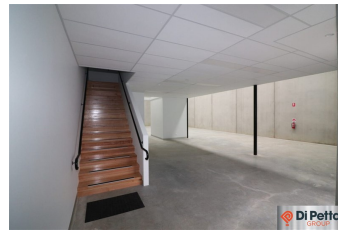


Dandenong South

28 Axis Crescent,



INVEST NOW OR
OCCUPY NOW



28 Axis Crescent,
Dandenong South

Available Now

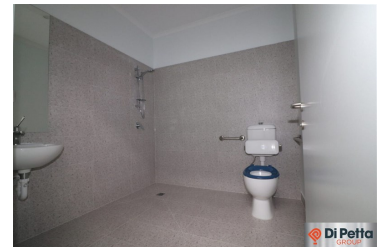
Currently tenanted with a lease, on a month to month basis =
\$3,698 + GST PCM + outgoings
Purchase Price: \$1,000,000

Occupy-Run your business or Buy to Invest

Located in the prestigious Logis Boulevard Estate, this premium warehouse/office facility presents an outstanding opportunity for investors or future owner-occupiers. Built in 2021 by award-winning Elite Property Group, the property showcases high-quality construction and modern design.

Property Features:

- * Total Building Area: 293 sqm*
- Warehouse: 235 sqm*
- Office: 58 sqm* (with reverse cycle air-conditioning)
- * Modern Corporate Facade
- * Clear Span Warehouse with excellent 7.5m internal clearance*
- * Container Height Motorised Roller Shutter Door
- * 3 Phase Power
- * Amenities: Kitchenette, bathroom with shower
- * 4 On-Site Parking
- * Secure Gated Community

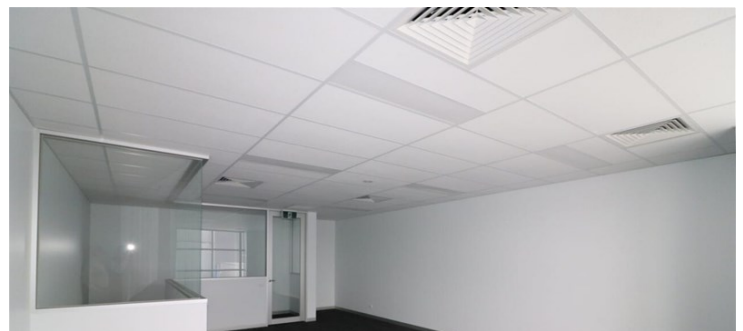


Location Advantages:

- * Situated in the multi award-winning Logis Estate
- * Easy access to EastLink via two diamond interchanges
- * Just 30 minutes to Melbourne CBD
- * Excellent connectivity to the M1 and surrounding industrial hubs

For Sale \$1,000,000 / INVESTMENT OR OCCUPY

Contact:
Antonio Di Petta
antonio@dipettagroup.com.au
0410 665 703



The information contained herein has been obtained from sources we deem to be reliable. However we cannot guarantee its accuracy and interested persons should rely on their own enquires.