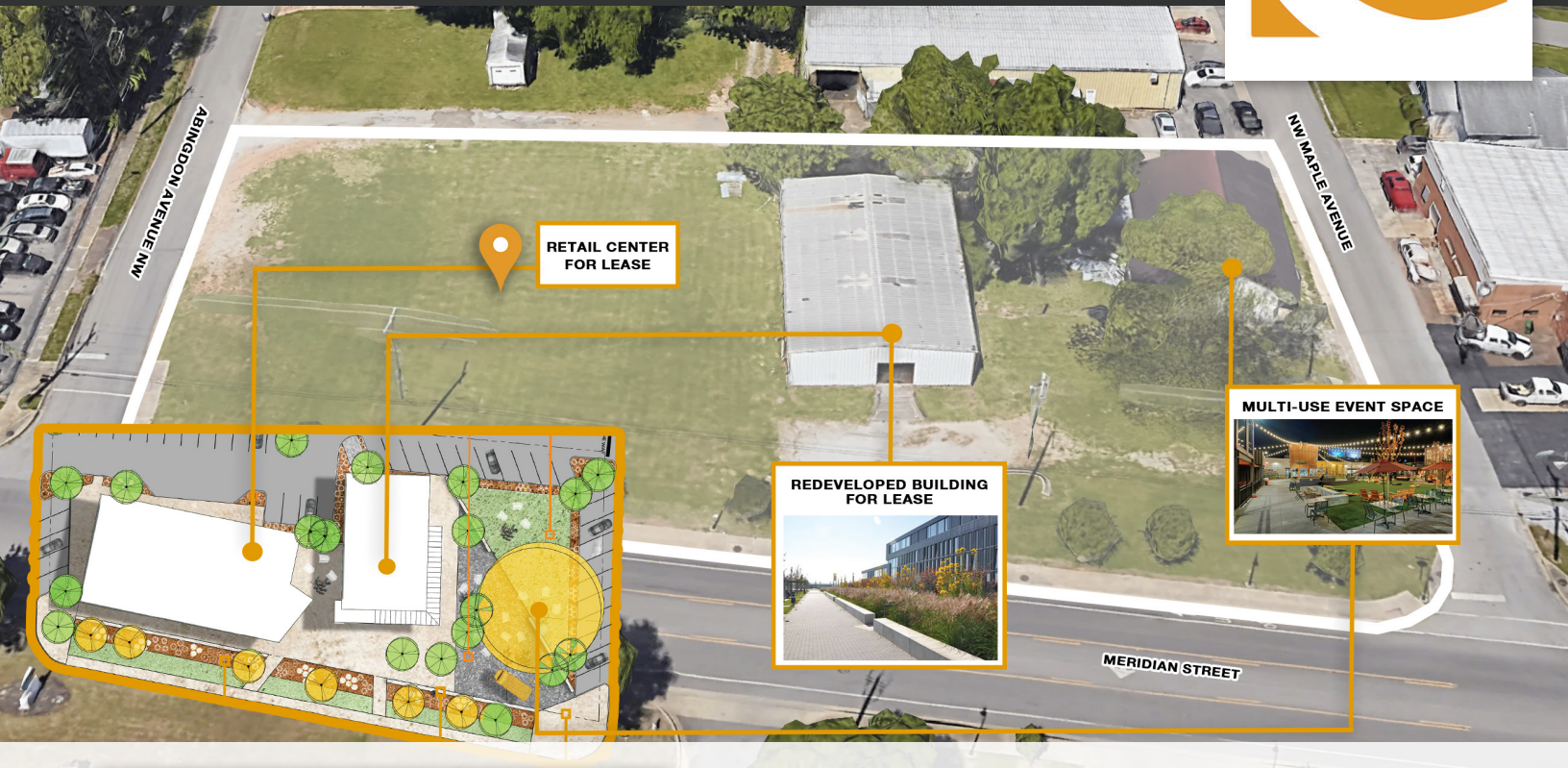


## MERIDIAN ST - FUTURE MIXED USE COMPLEX



### LOCATION

1209 Meridian Street  
Huntsville, AL 35801



### SPACE AVAILABLE

Retail Center: 1,400 SF- 7,400 SF  
Redeveloped Building: 4,000 SF



### PRICE

Call For Pricing

### ABOUT THE PROPERTY

Located near downtown Huntsville and directly across from Lincoln Mill, this future mixed-use center on Meridian Street offers an exceptional location with easy access to major traffic routes. The redevelopment blends modern design with the area's industrial character, creating a vibrant space for retail, dining, and creative businesses.

### PROPERTY HIGHLIGHTS:

- Future retail space for lease in a dynamic, high-traffic location.
- Redeveloped building, perfect for a gym, restaurant, or other uses.
- Ample parking to be constructed on site.
- Highly walkable area with easy access to surrounding attractions.

### DEMOGRAPHICS

	1-Mile	3-Miles	5-Miles
Population	6,581	62,981	121,186
Households	3,589	26,980	51,034
Avg HH Income	\$91,329	\$99,263	\$98,322
Median HH Income	\$72,213	\$71,100	\$60,586

### FOR MORE INFORMATION:

Wesley Crunkleton | Principal

256-536-8809

Wesley@crunkletonassociates.com



**CRUNKLETON**  
COMMERCIAL REAL ESTATE GROUP

# PROPERTY AREA MAP



FOR MORE INFORMATION:

Wesley Crunkleton | Principal

☎ 256-536-8809

✉ [Wesley@crunkletonassociates.com](mailto:Wesley@crunkletonassociates.com)

