

Belgrove Court

1808 Bellevue Avenue | Seattle, WA 98122



Paul Jacobson
WCCR
West Coast Commercial Realty



THE OPPORTUNITY

OFFICE/RETAIL SPACE AVAILABLE

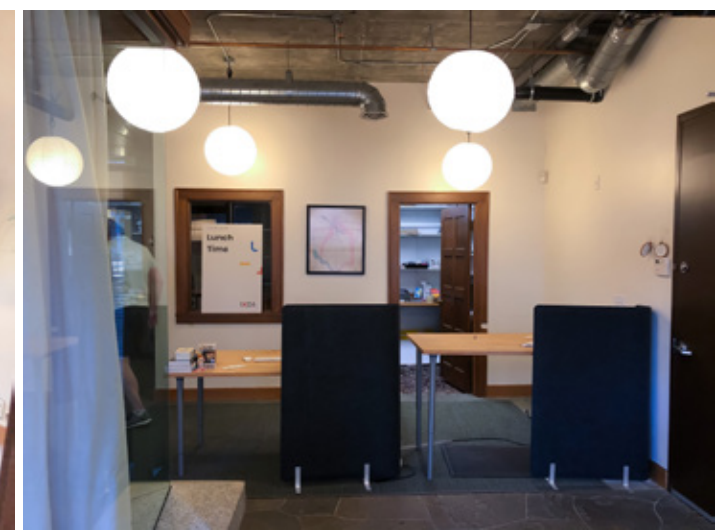
In the Heart of Capitol Hill, one of Seattle's most economically & culturally important business districts.

- Tranquil courtyard setting off Olive Way
- Flexible, creative space
- Thriving, diverse, professional community
- Local ownership group with in-house management and maintenance
- Suite 201 - 1,103 SF Office/Retail
- Suite 202 - 2,457 SF Office

Suite 201 - 1,103 SF Office/Retail

- Price: Negotiable
- 1-3 private offices and conference room
- Plumbed kitchenette and storage room
- Separate large conference/open office
- Monthly garage parking
- Great freeway access

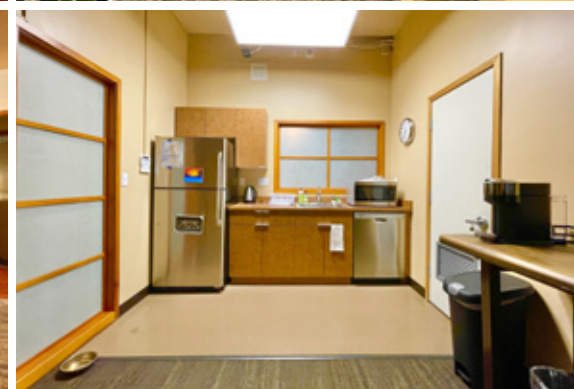
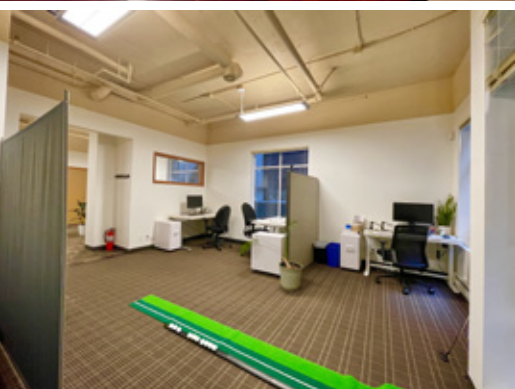
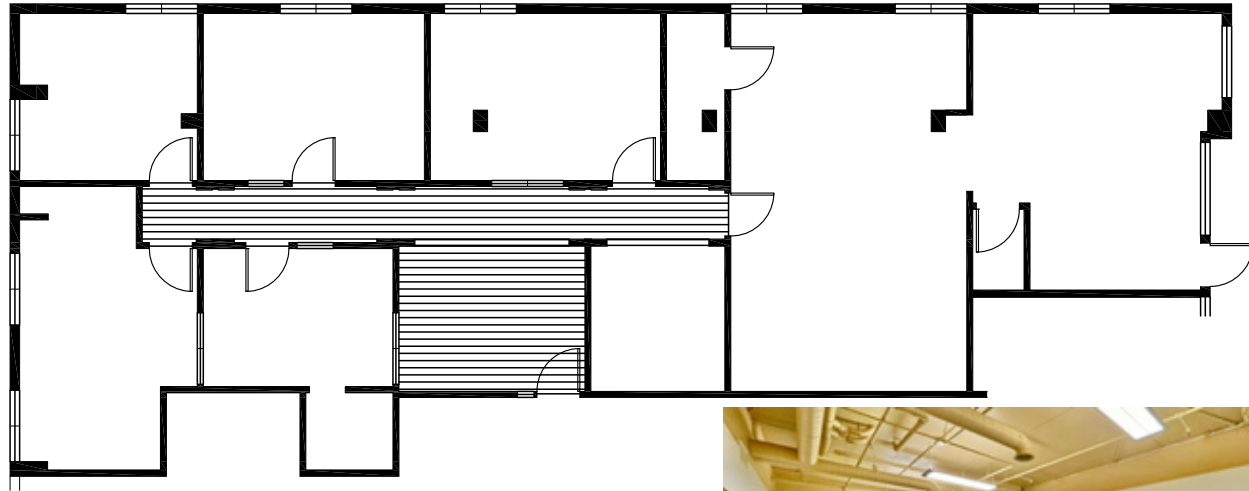
FLOOR PLAN



Suite 202 - 2,457 SF Office

- Price: Negotiable
- Windows on 3 sides
- Plumbed kitchenette
- A mix of rooms - conference/office
- Monthly garage parking
- Great freeway access

FLOOR PLAN



Belgrove Court

1808 Bellevue Avenue
Seattle, WA 98122

OFFICE/RETAIL SPACE AVAILABLE

WCCR

West Coast Commercial Realty

LEASING INFORMATION

Paul Jacobson

paul@wccommercialrealty.com

(206) 283-5212

www.wccommercialrealty.com



98
Walk Score
"Walker's Paradise"



96
Transit Score
"Rider's Paradise"



77
Bike Score
"Very Bikeable"

DISCLAIMER: The above information has been secured from sources believed to be reliable, however, no representations are made to its accuracy. Prospective tenants or buyers should consult their professional advisors and conduct their own independent investigation. Site plan and configuration are subject to change. Properties are subject to change in price and/or availability without notice. West Coast Commercial Realty, LLC