



1840 FARMINGTON

JACKSON, MO 63755

FOR LEASE

Presented By:

TOM KELSEY

573.334.5200

tkelsey@lorimont.com

PROPERTY SUMMARY



PROPERTY DESCRIPTION

11,544 SF industrial building on 2 acres of property with immediate availability.

PROPERTY HIGHLIGHTS

- 11,544 SF Total Building Size
- 800 SF of Offices Included
- 2-Acres of Property
- 9 Overhead Doors
- 23' Ceilings
- 5 Ton Crane
- 4800 3 Phase Electric
- Excellent Industrial Park Location
- Immediate Occupancy Possible

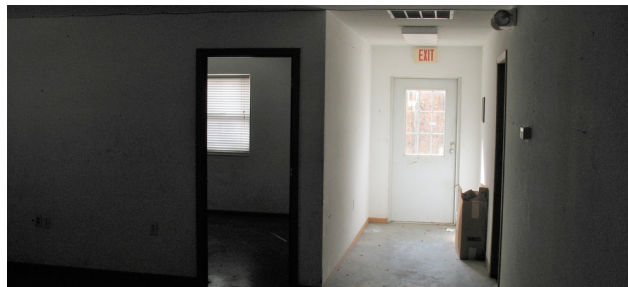
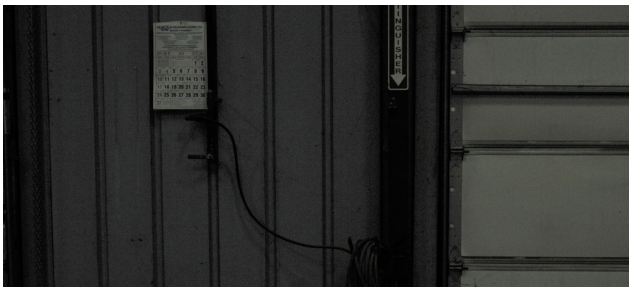
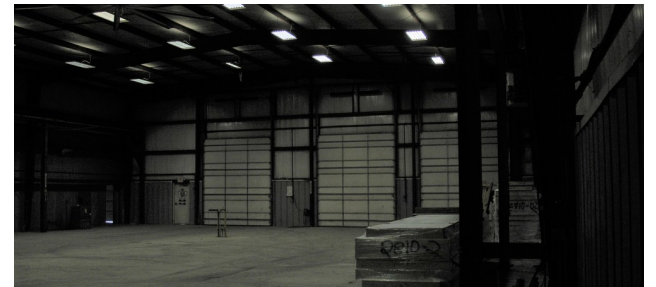
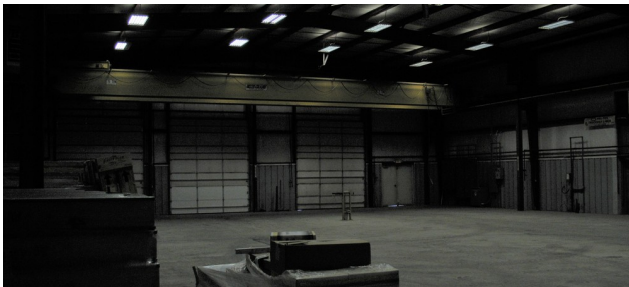
OFFERING SUMMARY

Lease Rate:	\$3,000.00 per month (Gross)
Available SF:	11,544 SF
Building Size:	11,544 SF

DEMOGRAPHICS	1 MILE	5 MILES	10 MILES
Total Households	445	8,322	21,089
Total Population	1,107	20,393	51,091
Average HH Income	\$56,189	\$57,631	\$61,254

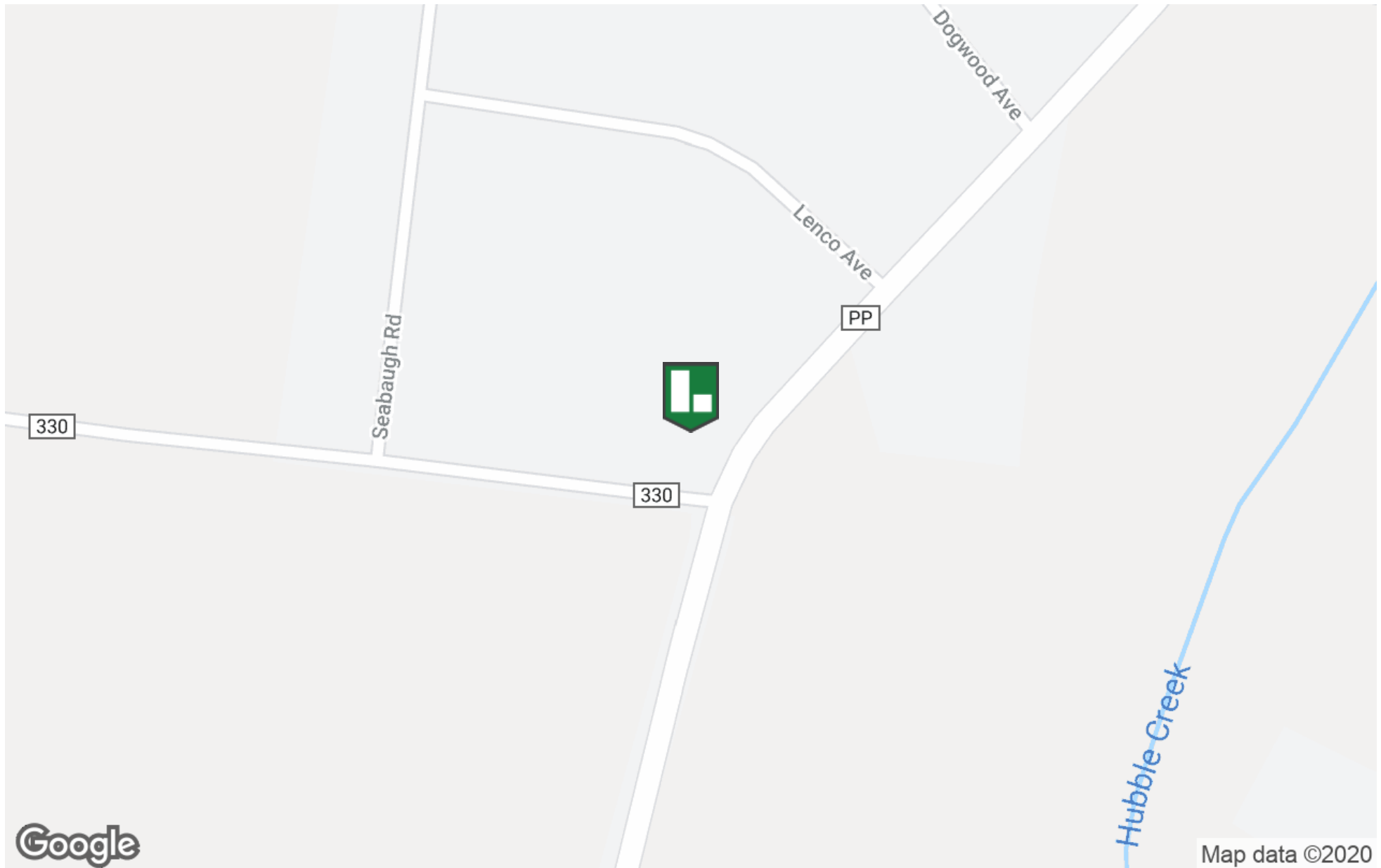
Presented By: **TOM KELSEY** | tkelsey@lorimont.com

ADDITIONAL PHOTOS



Presented By: **TOM KELSEY** | tkelsey@lorimont.com

LOCATION MAPS



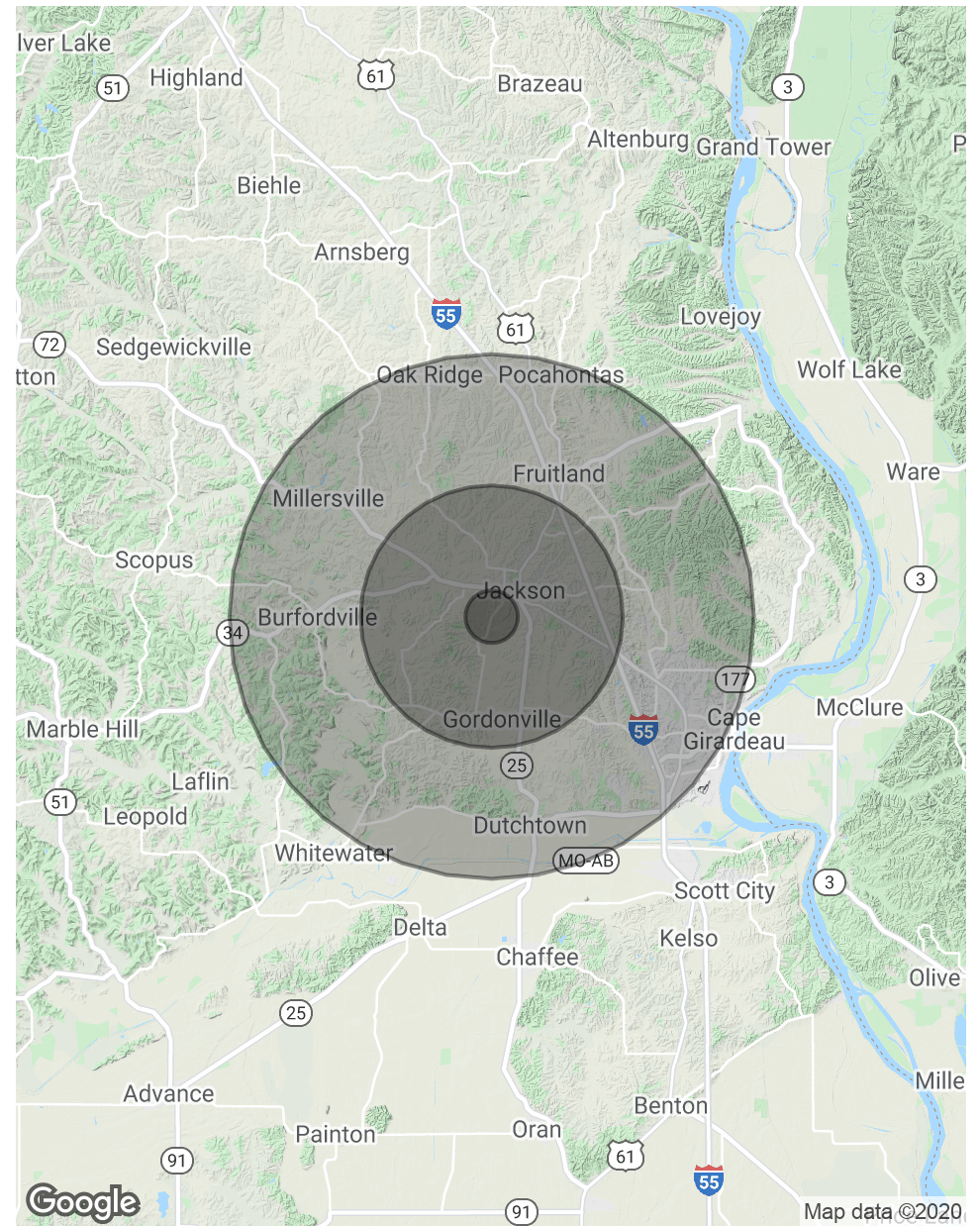
Presented By: **TOM KELSEY** | tkelsey@lorimont.com

DEMOGRAPHICS MAP & REPORT

POPULATION	1 MILE	5 MILES	10 MILES
Total Population	1,107	20,393	51,091
Average age	36.2	37.5	39.0
Average age (Male)	33.6	36.6	37.6
Average age (Female)	40.9	38.5	40.1

HOUSEHOLDS & INCOME	1 MILE	5 MILES	10 MILES
Total households	445	8,322	21,089
# of persons per HH	2.5	2.5	2.4
Average HH income	\$56,189	\$57,631	\$61,254
Average house value	\$144,093	\$149,505	\$165,991

* Demographic data derived from 2010 US Census



Presented By: **TOM KELSEY** | tkelsey@lorimont.com