

CITY CENTER PLAZA

43675 Grand River Avenue / Novi, MI



MID-AMERICA[®]
Real Estate-Michigan, Inc.

**DRIVE-THRU
AVAILABLE**



RETAIL OPPORTUNITY

CITY CENTER PLAZA



Address

43675 Grand River Avenue
Novi, MI 48375

Availability

816 - 5,884 SF

Features

- New construction retail opportunity located near the highly sought-after intersection of Grand River Avenue and Novi Road.
- Strategically positioned within a dominant retail corridor serving the affluent communities of Novi and Northville.
- Surrounded by leading national retailers, including Walmart, T.J. Maxx, and Twelve Oaks Mall, generating consistent consumer traffic.
- Bond Street provides a convenient cut-through from Novi Road, allowing customers to bypass congestion and improving overall site accessibility.
- Excellent visibility with strong traffic counts in one of the area's most active commercial corridors, with over 50,000 vpd at the intersection.
- Ideal for QSR and fast-casual concepts
- Pre-approved for drive-thru use.

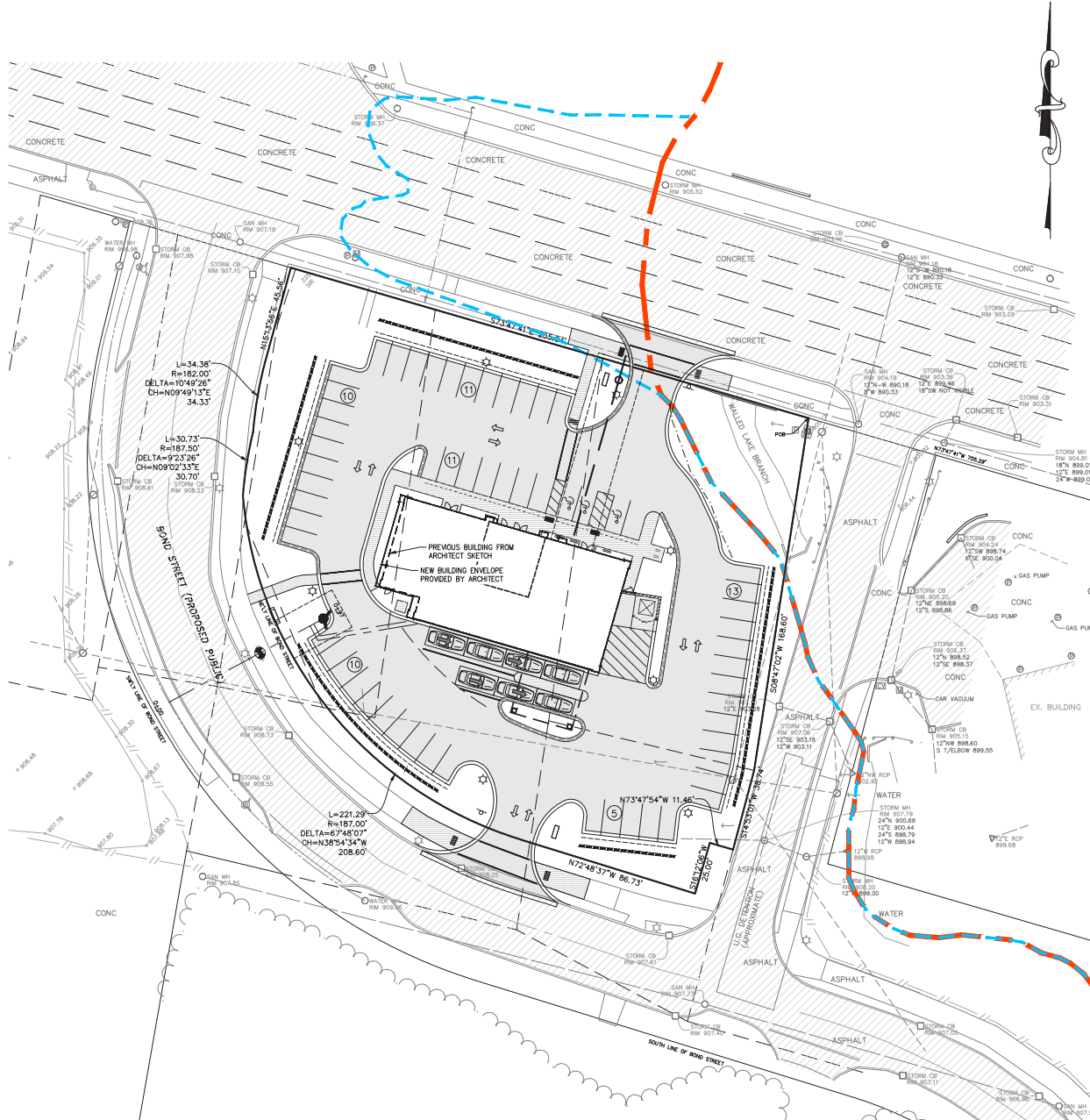
Area Tenants



Demographics (2025)

	1 MILE	3 MILES	5 MILES
POPULATION	9,243	46,262	125,675
HOUSEHOLDS	3,029	16,419	47,702
AVG HOUSEHOLD INCOME	\$205,706	\$176,047	\$148,512
DAYTIME POPULATION	6,090	35,716	104,349

CITY CENTER PLAZA



CITY CENTER PLAZA



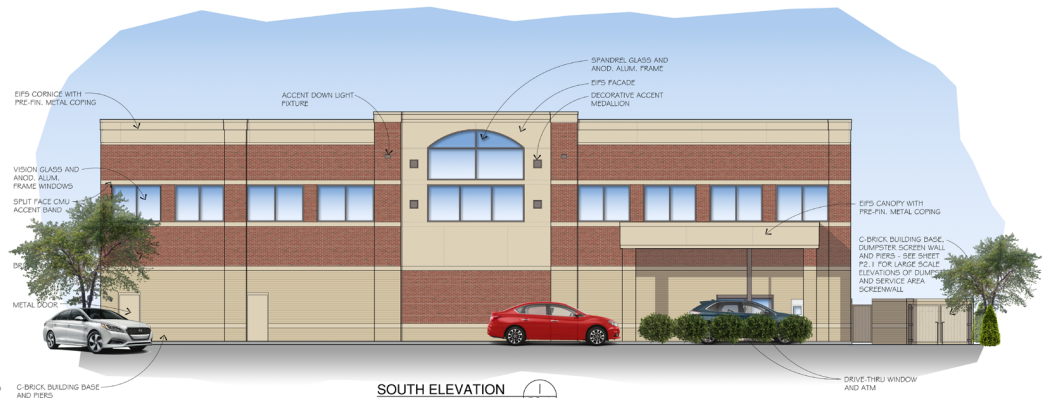
WEST ELEVATION 4
SCALE: 1/8" = 1'-0"
P.2.1



NORTH ELEVATION 2
SCALE: 1/8" = 1'-0"
P.2.1



EAST ELEVATION 3
SCALE: 1/8" = 1'-0"
P.2.1



SOUTH ELEVATION 1
SCALE: 1/8" = 1'-0"
P.2.1

CITY CENTER PLAZA



CITY CENTER PLAZA

Katie
Fisch

Mid-America Real Estate -
Michigan, Inc.
T: 248.855.6800
KFisch@MidAmericaGrp.com

Cynthia
Kratchman

Mid-America Real Estate -
Michigan, Inc.
T: 248.855.6800
CKratchman@MidAmericaGrp.com

Jake
Lievois

Mid-America Real Estate -
Michigan, Inc.
T: 248.855.6800
JLievois@MidAmericaGrp.com



38500 Woodward Ave, Suite 100
Bloomfield Hills, Michigan 48304
248.855.6800
MidAmericaGrp.com



CONTACT