

LEASE

THREE PRIVATE MEDICAL SUITES BERKELEY'S ELMWOOD DISTRICT TWO ±195 SF AND ±160-SF SUITE



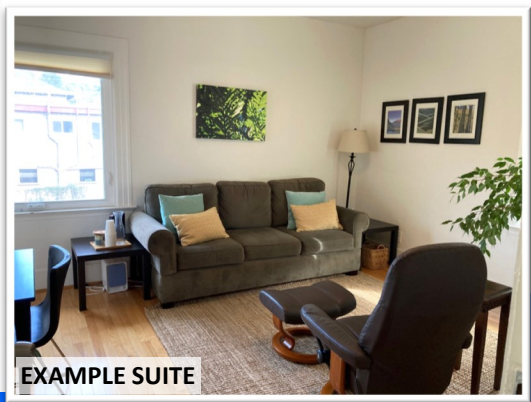
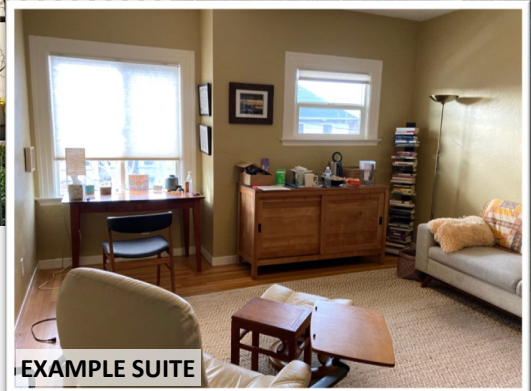
2811 COLLEGE AVENUE BERKELEY CA 94705

**NO COMMON
AREA CHARGES**



UNIT 2: ±195 SF / \$1,250
UNIT 4: ±160 SF / \$1,200
UNIT 5: ±195 SF / \$1,250
**MONTHLY RATES INCLUDE
COMMON AREA AND UTILITIES**

In the heart of the Elmwood District, these small medical offices are perfect for therapists, holistic healers, and other quiet professional users. The units are on the 2nd floor and have great natural light and recently re-finished hardwood floors. The building has a common client/patient waiting area with waiting lights and a common restroom. Seeking minimum 3-year lease term.



Francis Griffin
510-450-1405
fgriffin@mrecommercial.com
CA DRE No: 02016713



All information herein is offered in good faith and deemed accurate, but not guaranteed.