

Park Road/Montford Office Space for Lease



4731 Hedgemore Dr

Property Features:

- First Floor Suite 3,728 SF
- Second Floor Suite 3,728 SF
- Basement 2,120 SF With Room For Additional Improvements
- Ample Surface Parking
- Multiple Access Points From Park Rd And Montford Dr Via Abbey Place And Mockingbird Ln
- Located in Park Road submarket with easy access to area service, retail, and restaurants.
- Easy Access to I-85 Via Woodlawn Rd and Uptown Via Park Rd

For More Details Contact

Ross Levin 704-688-3329 rlevin@r2propertiesinc.com
3430 Selwyn Ave Charlotte NC 28209

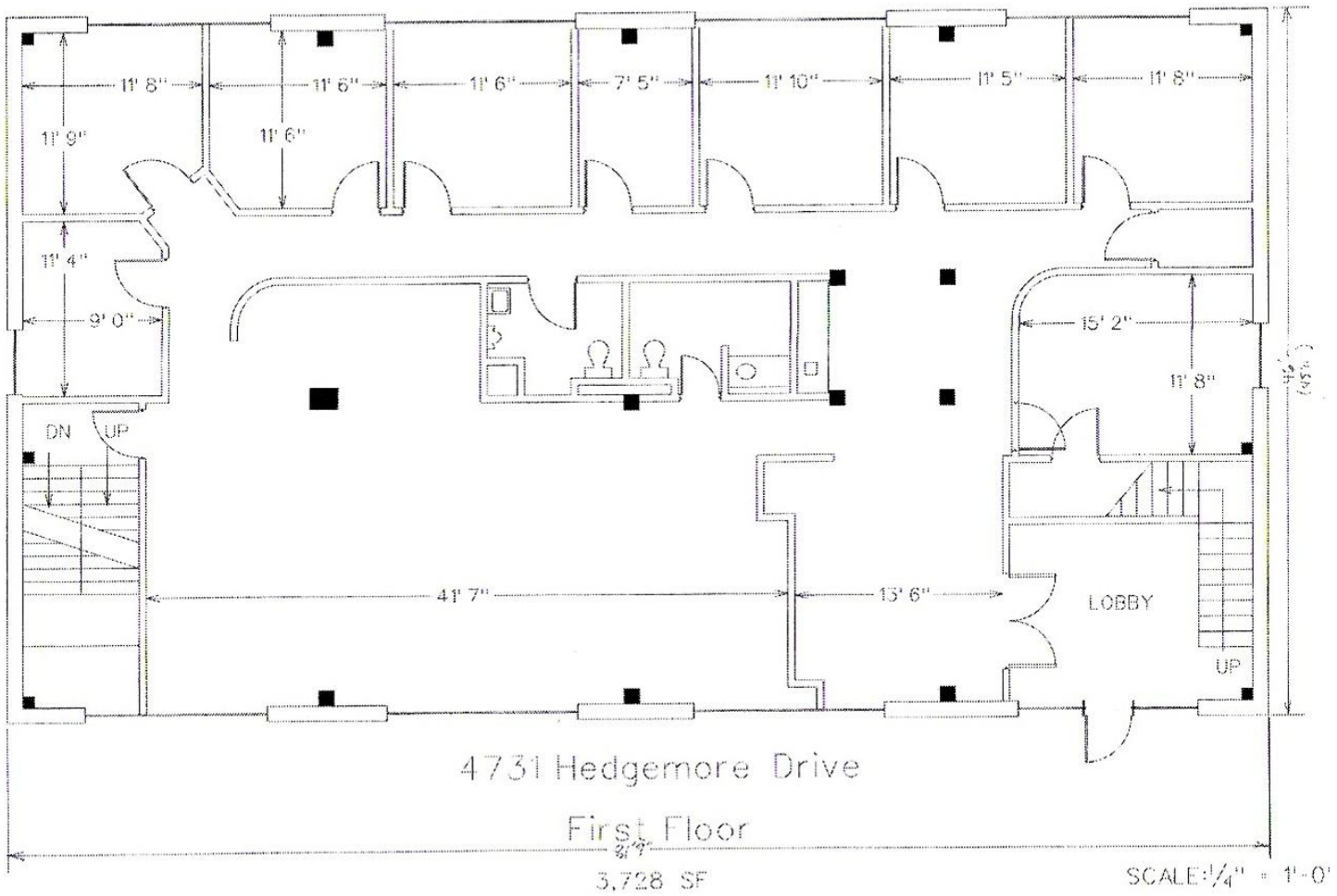
4731 Hedgemore Dr

Location & Surrounding Business Map



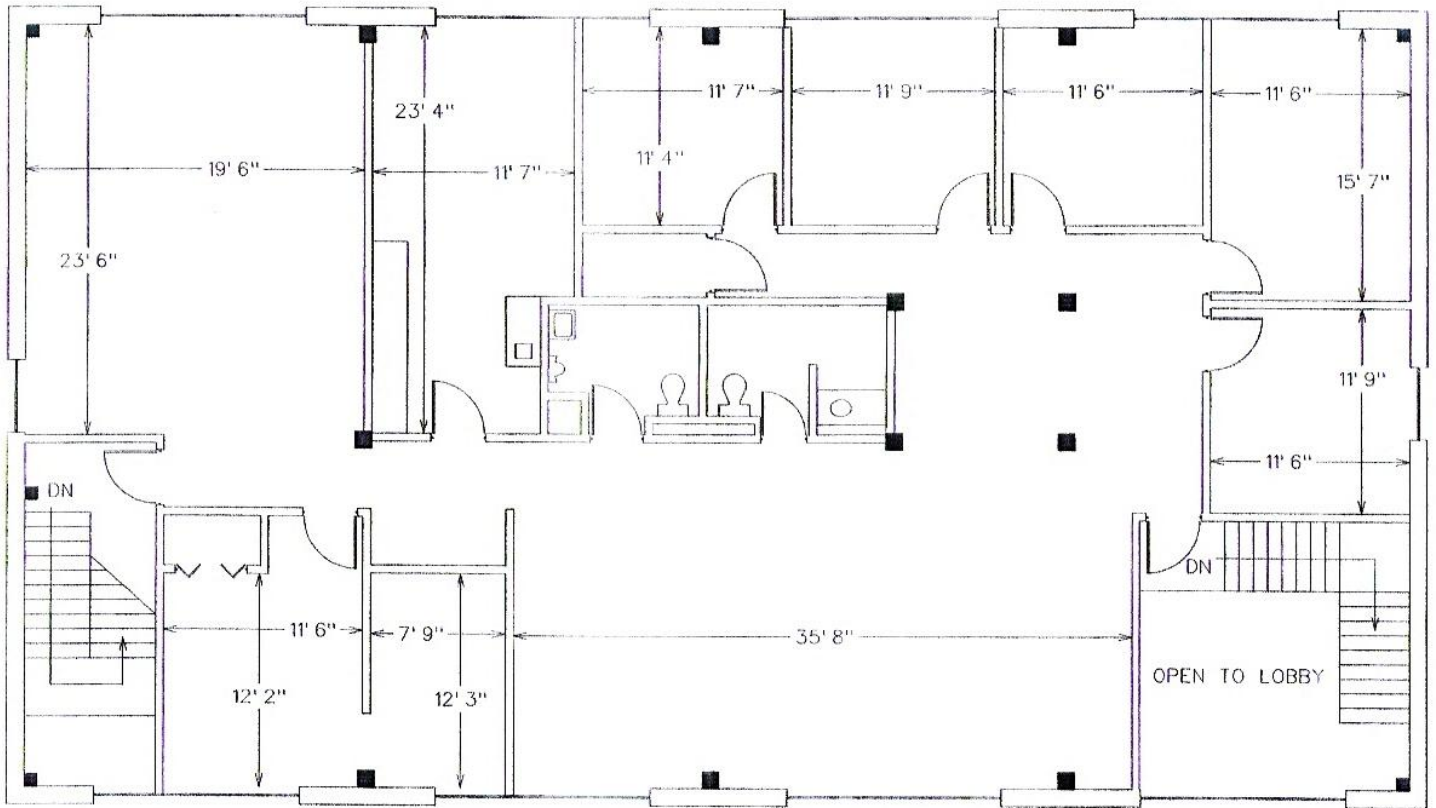
4731 Hedgemore Dr

Floor Plans:



4731 Hedgemore Dr

Floor Plans:



4731 Hedgemore Drive

Second Floor

3,728 SF

SCALE: $\frac{1}{4}$ " = 1'-0"

4731 Hedgemore Dr

Floor Plans:

