

# White Oak Professional Bldgs.

SW Luttrell Rd and SW Skyline Dr, Blue Springs, Missouri



Building 1



Building 2 - LEASED



Building 3



Building 4



## Office Space Available for Lease

As exclusive agents, we are pleased to offer the following space for lease:

- ◆ 666 sf to 5,000 sf available
- ◆ Located near the 7 Hwy and 40 Hwy intersection
- ◆ Adjacent to the redeveloped \$46 million White Oak Market Place, this new 20.5 acre development features an 86,000 sf Price Chopper with additional retail space
- ◆ Lease rates from \$6.00 to \$12.00 sf mg

**Building 1 - 1212 Luttrell Rd**  
666 sf - 1,500 sf

**Building 3 - 1052 Luttrell Rd**  
1,980 sf

**Building 4 - 1040 Luttrell Rd.**  
1,666 sf

**Building 5 - 1023 Luttrell Rd. - Planned**  
5,000 sf - 10,000 sf (build-to-suit)

**Justin Beal** 816.268.4241 [jbeal@ngzimmer.com](mailto:jbeal@ngzimmer.com)

**Newmark Grubb  
Zimmer**

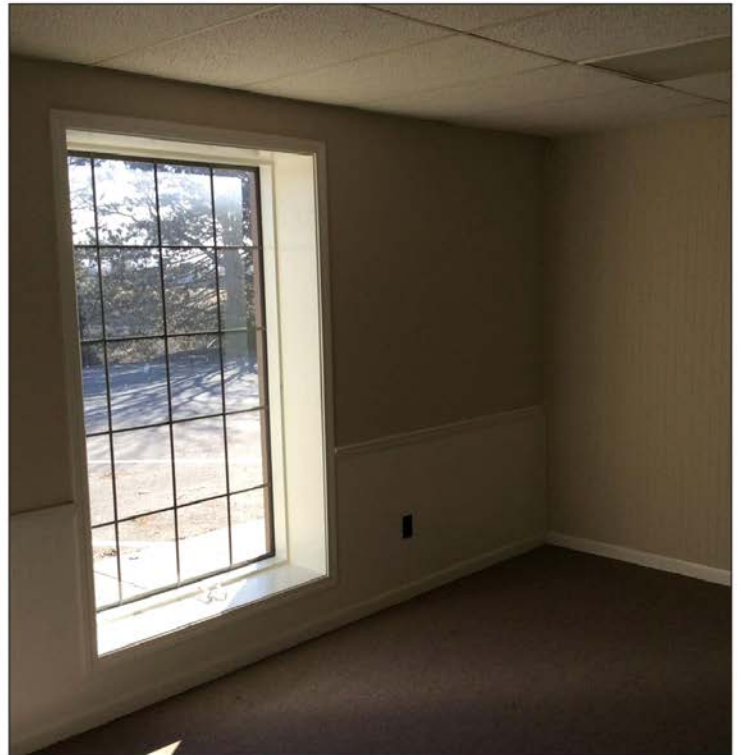
1220 Washington St, Kansas City, Missouri 64105

Independently owned and operated

Procuring broker shall only be entitled to a commission calculated in accordance with the rates approved by our principal only if such procuring broker executes a brokerage agreement acceptable to us and our principal and the conditions as set forth in the brokerage agreement are fully and unconditionally satisfied. Although all information furnished regarding property for sale, rental, or financing is from sources deemed reliable, such information has not been verified and no express representation is made nor is any to be implied as to the accuracy thereof and it is submitted subject to errors, omissions, change of price, rental or other conditions, prior sale, lease or financing, or withdrawal without notice and to any special conditions imposed by our principal.

# White Oak Professional Bldgs.

SW Luttrell Rd and SW Skyline Dr, Blue Springs, Missouri

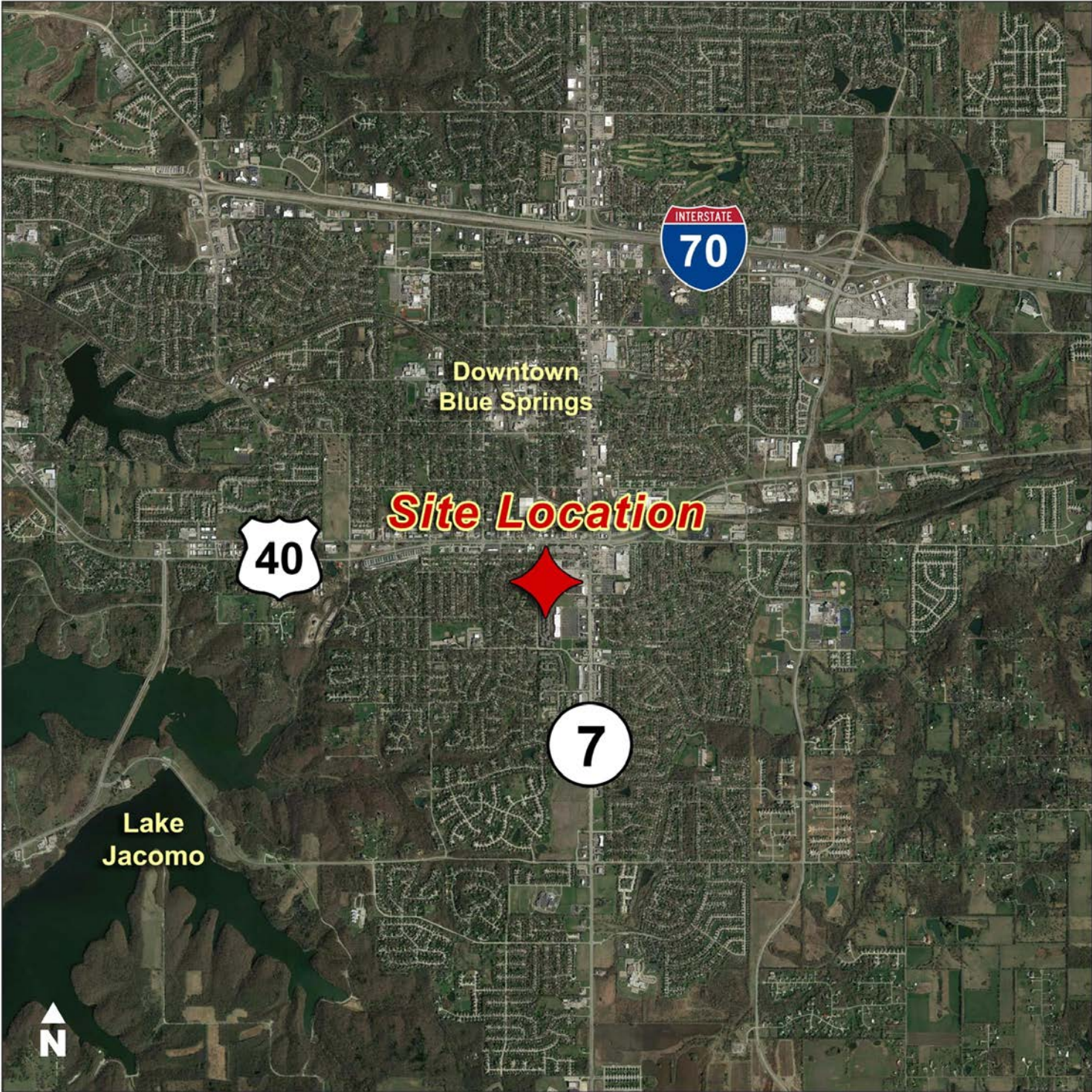


Justin Beal 816.268.4241 [jbeal@ngzimmer.com](mailto:jbeal@ngzimmer.com)

**Newmark Grubb**  
Zimmer

# White Oak Professional Bldgs.

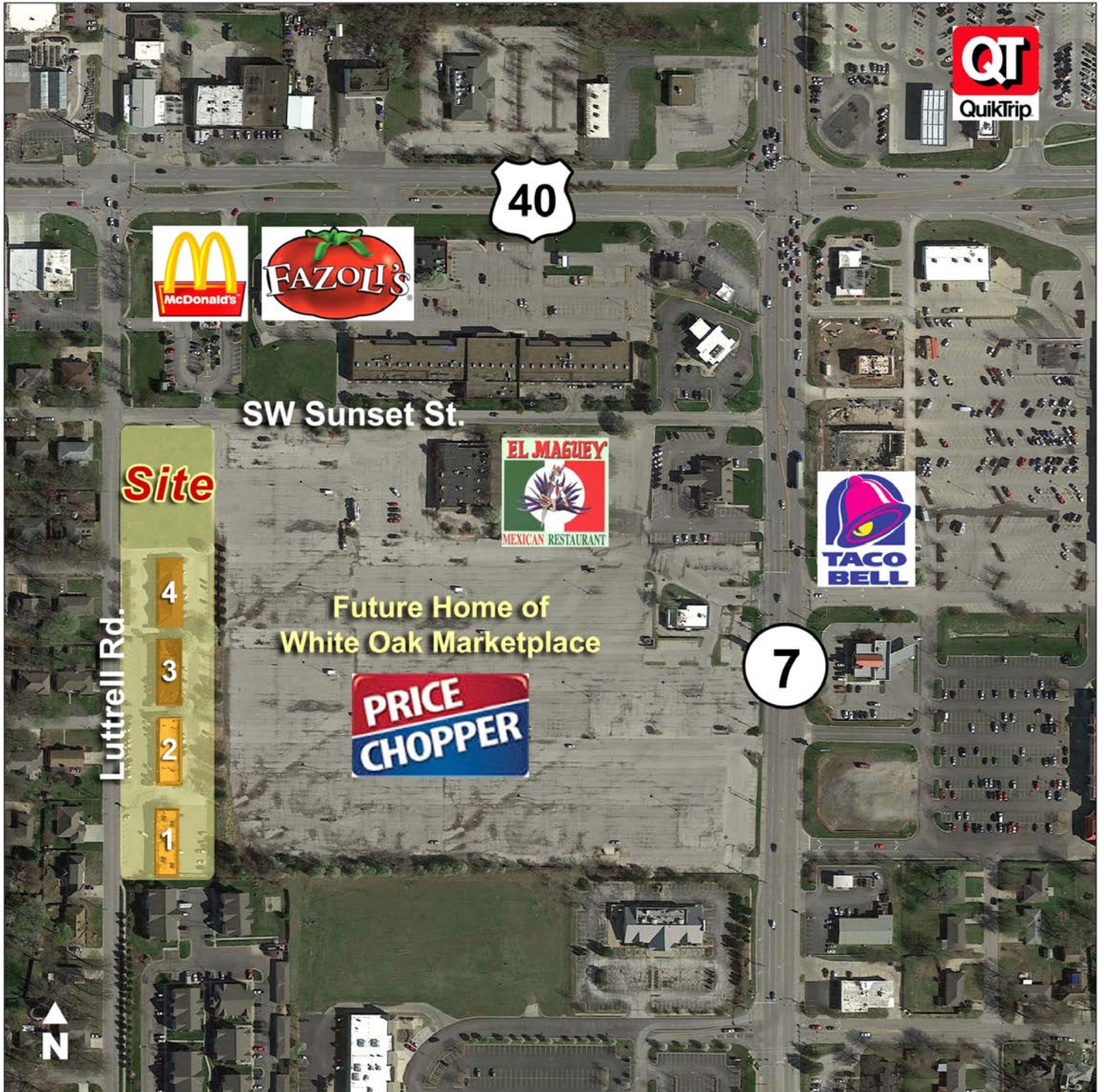
SW Luttrell Rd and SW Skyline Dr, Blue Springs, Missouri



Justin Beal 816.268.4241 [jbeal@ngzimmer.com](mailto:jbeal@ngzimmer.com)

# White Oak Professional Bldgs.

SW Luttrell Rd and SW Skyline Dr, Blue Springs, Missouri



Justin Beal 816.268.4241 [jbeal@ngzimmer.com](mailto:jbeal@ngzimmer.com)