

FOR LEASE

21290 Butteville Road NE
Donald, OR 97002

» Donald Industrial Park

» New Construction

» Located Minutes West
of Interstate 5 at
Exit 278

» I-5 Corridor



Donald Industrial Park

CONTACT:

John Fettig

503.708.9710

johnfettig@capacitycommercial.com

FOR LEASE

DONALD INDUSTRIAL PARK

21290 BUTTEVILLE ROAD NE, DONALD, OREGON

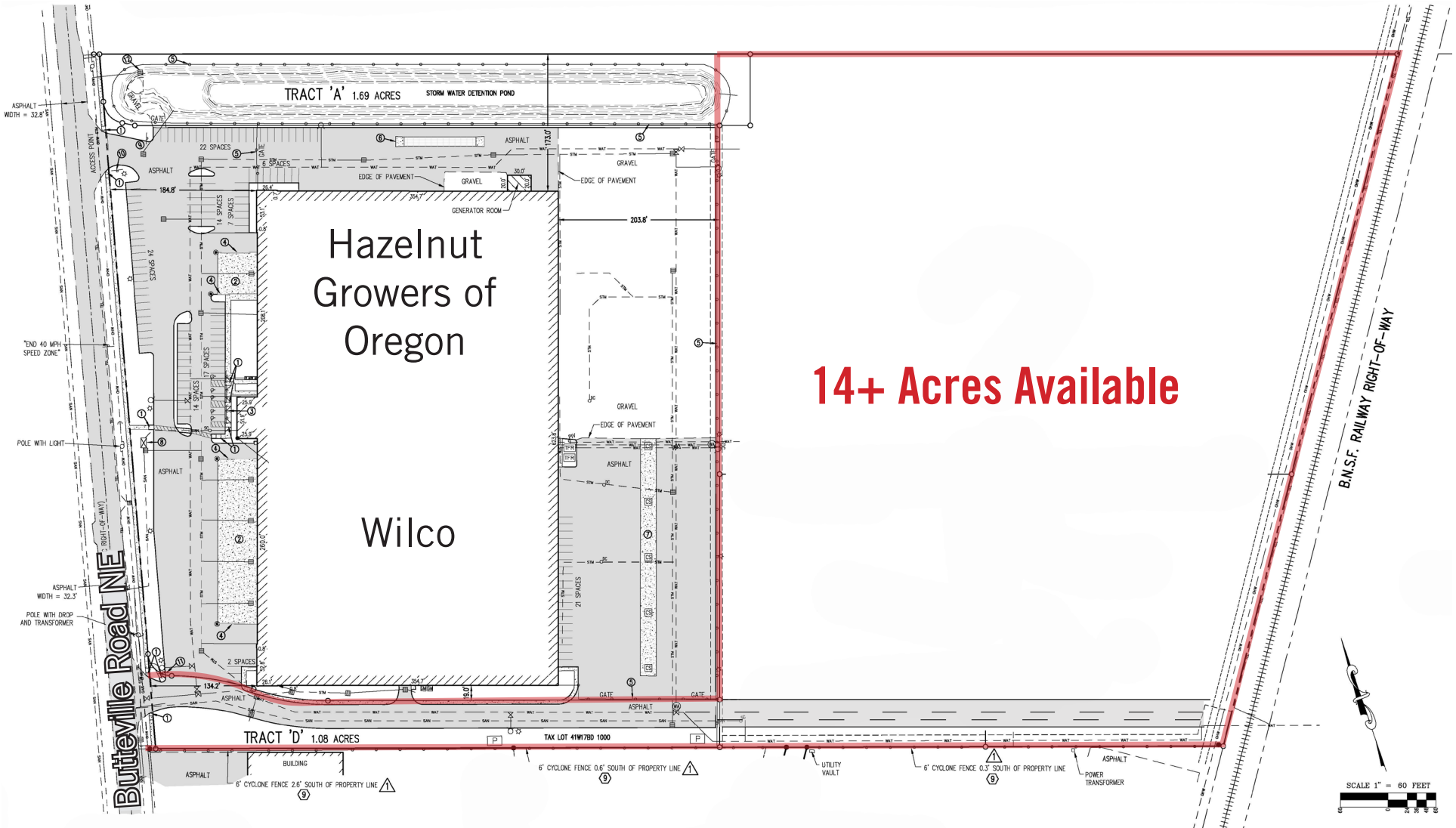


- BUILD-TO-SUIT NEW CONSTRUCTION - BRING US YOUR PLANS OR OUR ARCHITECTURAL GROUP CAN DESIGN A BUILDING FOR MANUFACTURING OR DISTRIBUTION USE
- APPROXIMATELY 14+ ACRES - SHOVEL READY INDUSTRIAL LAND
- PREFERRED BUILDING SIZE FROM 100,000-300,000 SF
- RAIL-SERVED-BURLINGTON NORTHERN SANTA FE-PORTLAND & WESTERN RAILROAD
- LONG TERM LEASE AVAILABLE
- EMPLOYMENT INDUSTRIAL ZONING - DISTRIBUTION/MANUFACTURING/OUTDOOR STORAGE
- CITY OF DONALD, MARION COUNTY
- ECONOMIC DEVELOPMENT INCENTIVES AVAILABLE FOR QUALIFIED PROJECTS
- STORMWATER DETENTION FACILITY IN PLACE
- NW NATURAL - NATURAL GAS
- PORTLAND GENERAL - ELECTRICITY
- CENTURY LINK - TELEPHONE/DATA
- WATER/SEWER SERVED, CITY OF DONALD

FOR LEASE

DONALD INDUSTRIAL PARK

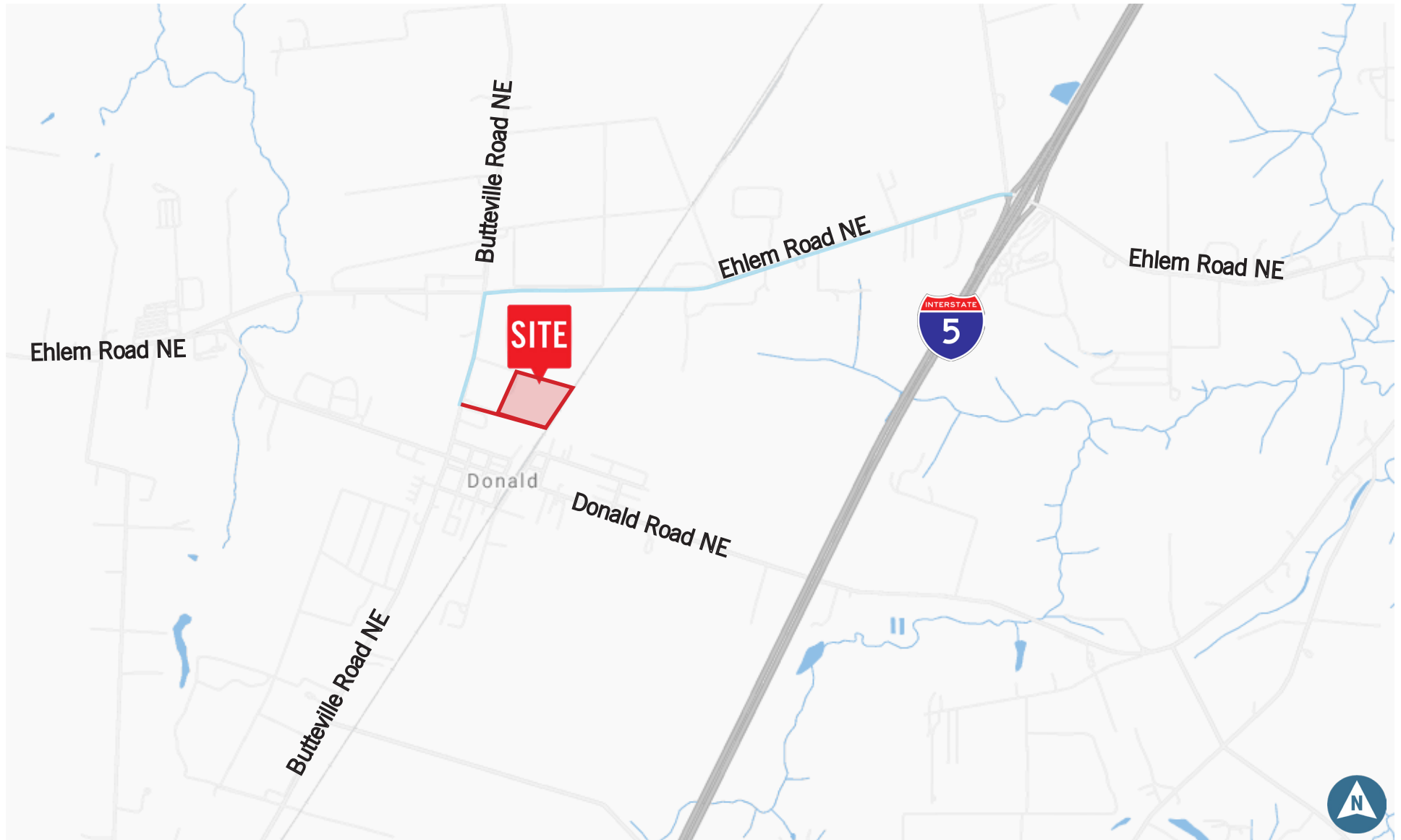
21290 BUTTEVILLE ROAD NE, DONALD, OREGON



FOR LEASE

DONALD INDUSTRIAL PARK

21290 BUTTEVILLE ROAD NE, DONALD, OREGON



FOR LEASE

DONALD INDUSTRIAL PARK

21290 BUTTEVILLE ROAD NE, DONALD, OREGON

