

# FOR LEASE

1019 37th Ave. Court, #2  
Greeley, CO 80634

## SMALL PROFESSIONAL OFFICE CONDO AVAILABLE

PROPERTY TYPE

**OFFICE SUITE**

ZONED C-L, CITY OF GREELEY

AVAILABLE

**1,017 SF**

PRICE

**\$14.50/SF NNN**

**(\$8.24/SF EST'D EXPENSES)**



### FEATURES:

- Nice, small, professional office suite available for lease beginning September 1st, 2023
- Located in the Bittersweet Place Office Park
- Close to shopping and nearby restaurants with convenient access from 10th Street
- Unit 2 consists of 4 offices, conference room, break area, and reception area; suite has ample natural lighting
- 3-5 year lease term minimum

**REALTEC**  
COMMERCIAL REAL ESTATE SERVICES

**Nick Berryman**

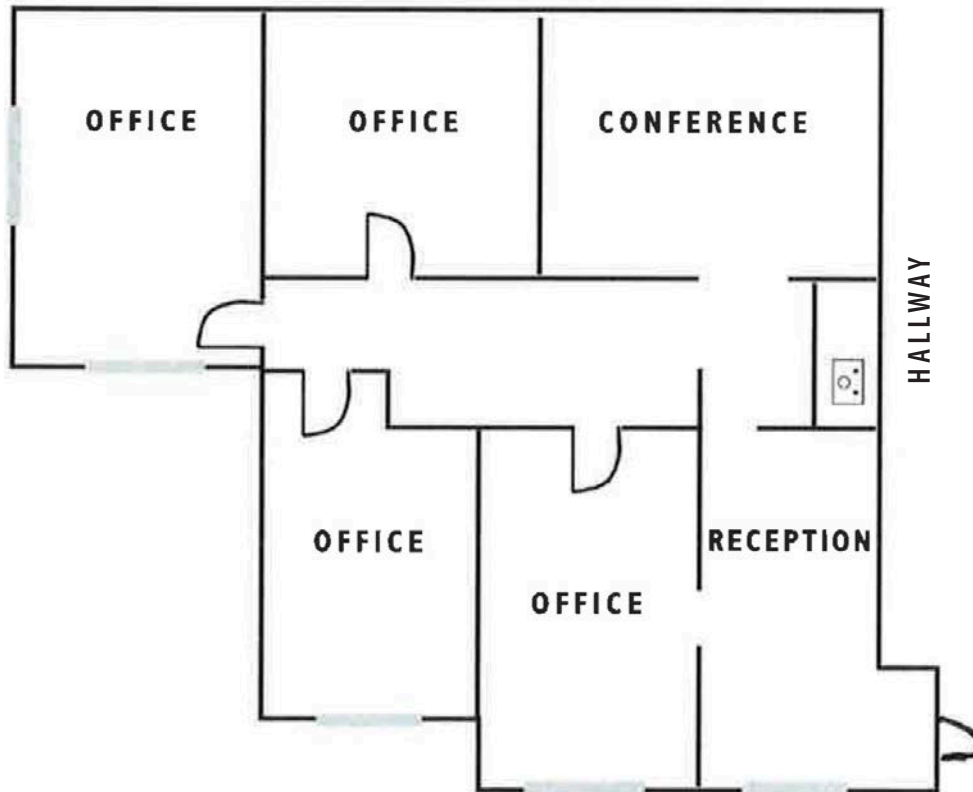
970.313.4690

[nberryman@realtec.com](mailto:nberryman@realtec.com)

**VIEW MORE REALTEC LISTINGS AT [WWW.REALTEC.COM](http://WWW.REALTEC.COM)**

# FOR LEASE

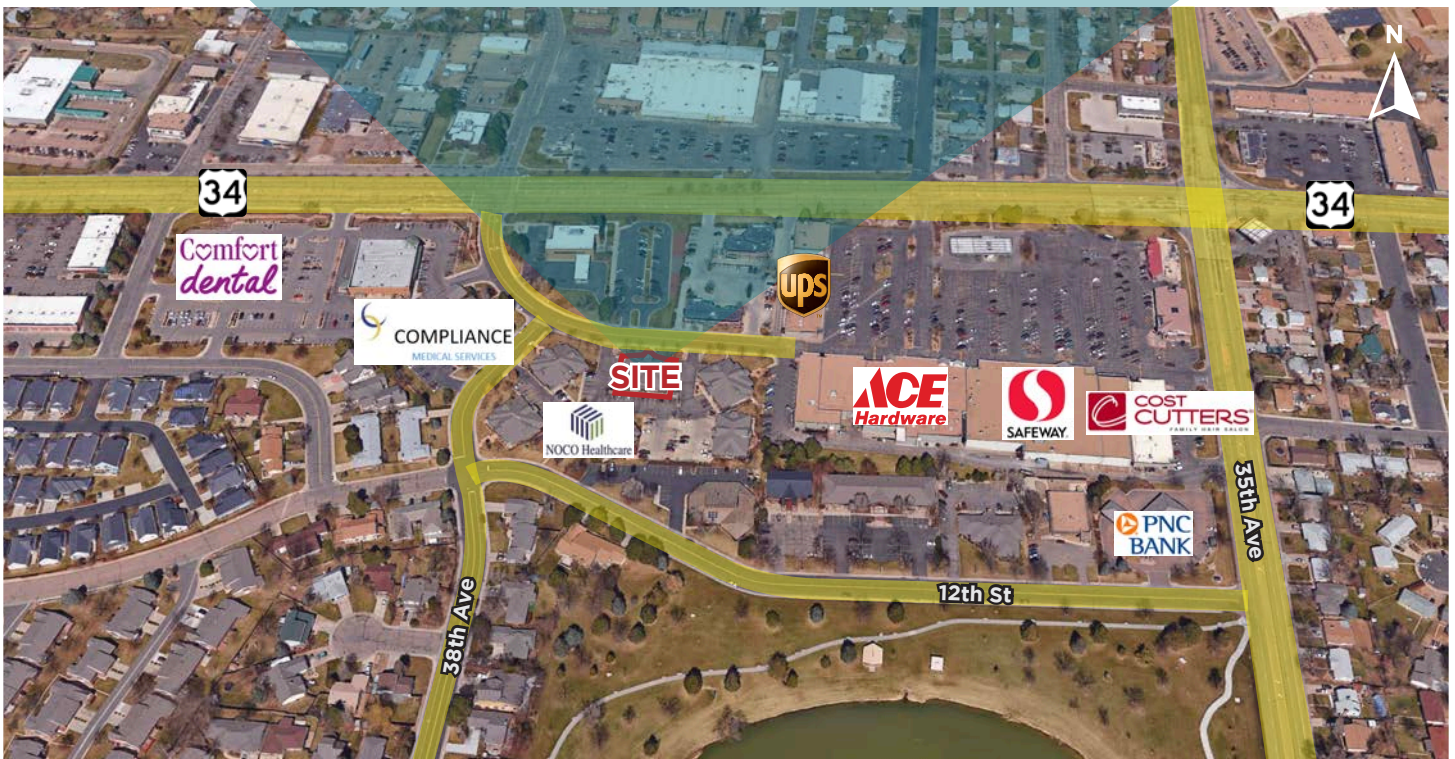
1019 37th Ave. Court, #2  
Greeley, CO 80634



VIEW MORE REALTEC LISTINGS AT [WWW.REALTEC.COM](http://WWW.REALTEC.COM)

# FOR LEASE

1019 37th Ave. Court, #2  
Greeley, CO 80634



## Fort Collins

400 E Horsetooth Rd, Suite 200  
Fort Collins, CO 80525  
970-229-9900

## Loveland

350 E 7th St, Suite 2  
Loveland, CO 80537  
970-593-9900

## Greeley

1711 61st Ave, Suite 104  
Greeley, CO 80634  
970-346-9900

**REALTEC**  
COMMERCIAL REAL ESTATE SERVICES