

# 1629 WORLD TRADE CENTER LOOP

Laredo, TX 78045



FOR LEASE



Industrial warehouse located in Millenium Industrial Park with direct access to Mines Rd. Located 13 miles from Colombia Bridge and just 6 miles from World Trade Bridge.

**TANO CARRANZA**  
956.724.7141  
tcarranza@killamco.com

**KILLAM DEVELOPMENT**  
4320 University Blvd  
Laredo, TX 78041  
956.724.7141 | [www.killamdevelopment.com](http://www.killamdevelopment.com)



The information contained herein has been obtained through sources deemed reliable but cannot be guaranteed as to its accuracy. Any information of special interest should be obtained through independent verification.

# 1629 WORLD TRADE CENTER LOOP

Laredo, TX 78045



## PROPERTY SUMMARY

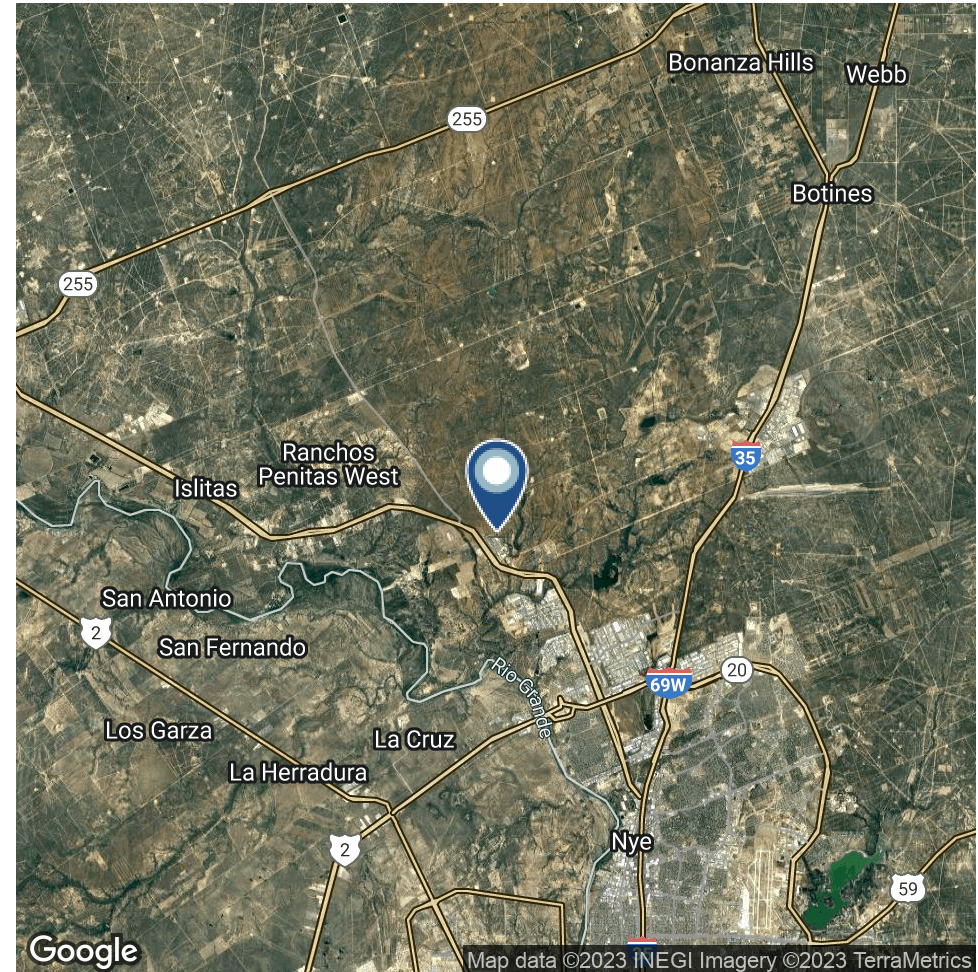


## PROPERTY DESCRIPTION

A 100,931 SF warehouse available for lease in Millenium Industrial Park. Building specifications include approx. 4,200 SF of office space, 40 dock high doors, 4 overhead doors with ramp, 22' clear height ceilings, and 56 trailer staging.

## LOCATION DESCRIPTION

Industrial warehouse located in Millenium Industrial Park with direct access to Mines Rd. Located 13 miles from Colombia Bridge and just 6 miles from World Trade Bridge.



**TANO CARRANZA**

956.724.7141

tcarranza@killamco.com



**KILLAM DEVELOPMENT**

4320 University Blvd

Laredo, TX 78041

956.724.7141 | [www.killamdevelopment.com](http://www.killamdevelopment.com)

The information contained herein has been obtained through sources deemed reliable but cannot be guaranteed as to its accuracy. Any information of special interest should be obtained through independent verification.

# 1629 WORLD TRADE CENTER LOOP

Laredo, TX 78045



## PROPERTY DETAILS



Building Size	100,931 SF
Office Space:	4,200 SF
Clear Height:	22'
Dock Doors:	40 OHD & 4 Ramps
Trailer Staging:	56 Spaces
Lot Size	7 Acres
Year Built	2004



**TANO CARRANZA**  
956.724.7141  
tcarranza@killamco.com



**KILLAM DEVELOPMENT**

4320 University Blvd  
Laredo, TX 78041

956.724.7141 | [www.killamdevelopment.com](http://www.killamdevelopment.com)

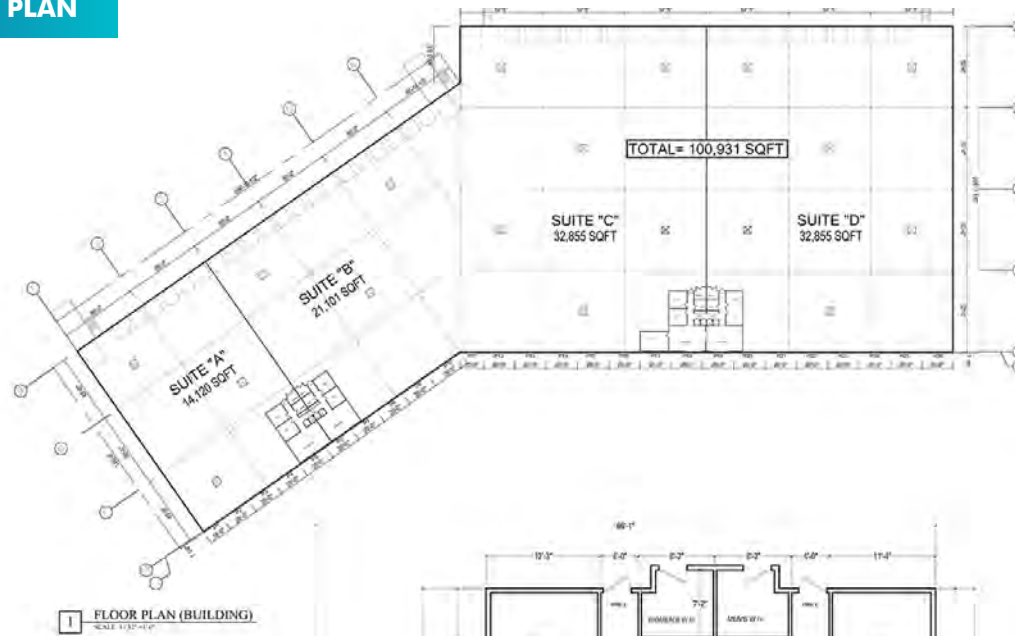
The information contained herein has been obtained through sources deemed reliable but cannot be guaranteed as to its accuracy. Any information of special interest should be obtained through independent verification.

# 1629 WORLD TRADE CENTER LOOP

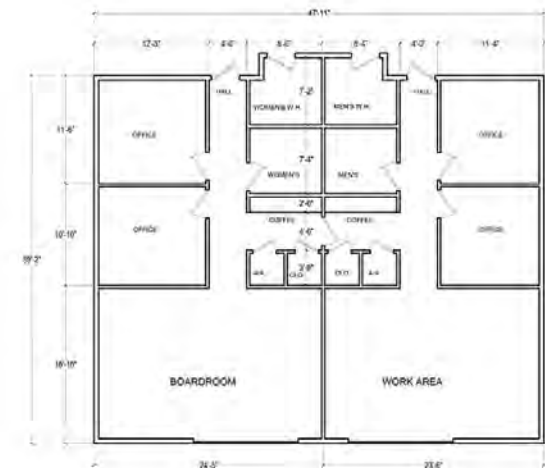
Laredo, TX 78045



## PROPERTY SITE PLAN



1 FLOOR PLAN (BUILDING)  
SCALE 1/32"=1'-0"



TANO CARRANZA  
956.724.7141  
tcarranza@killamco.com

KILLAM DEVELOPMENT

4320 University Blvd  
Laredo, TX 78041

956.724.7141 | www.killamdevelopment.com



The information contained herein has been obtained through sources deemed reliable but cannot be guaranteed as to its accuracy. Any information of special interest should be obtained through independent verification.