

6,101 SF Warehouse With Dock Loading



INDUSTRIAL / FLEX SPACE FOR LEASE STONEMOOD BUSINESS CENTER

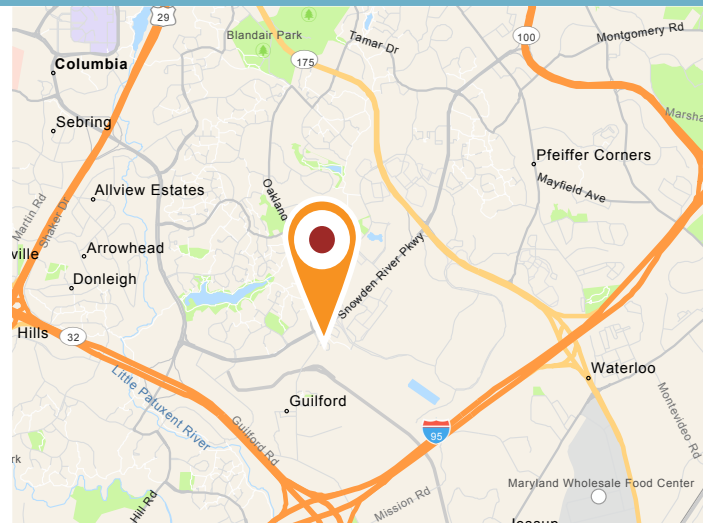
AVAILABLE

Suite Highlights

- **Available:** 6,101 SF
- **Sprinklers:** Wet
- **Zoning:** NT
- **Dock Loading:** One (1)
- **Power:** 3 phase, 4 wire
- **Parking:** 2.50/1,000 SF

Building Highlights

- Thriving 4 building flex park totaling 148,000 SF
- Flexible spaces with differing portions of individual office/bullpen area
- Convenient access to I-95, Route 29 and Route 32
- Minutes from Ft. Meade/NSA, Columbia Town Center, BWI Airport, and numerous amenities

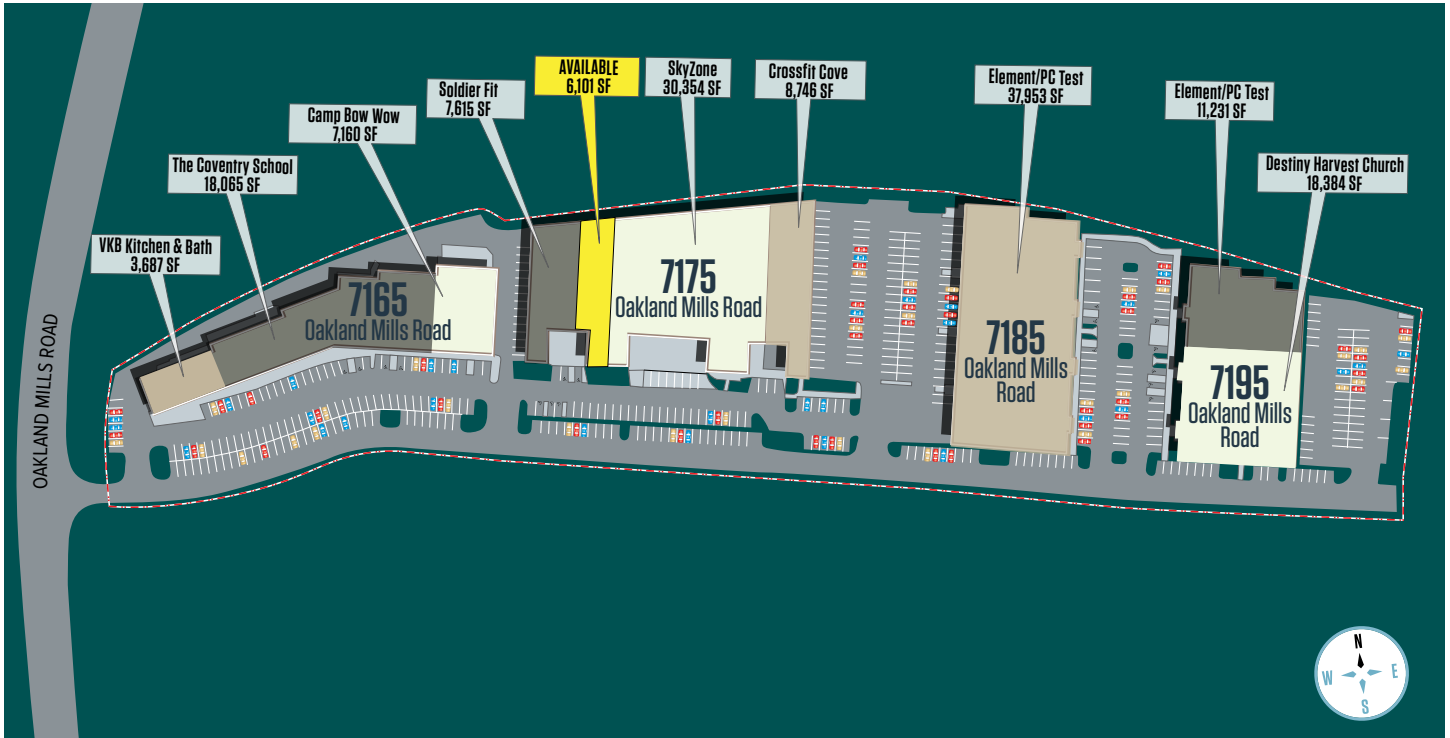


DOCK LOADING

7175 OAKLAND MILLS ROAD

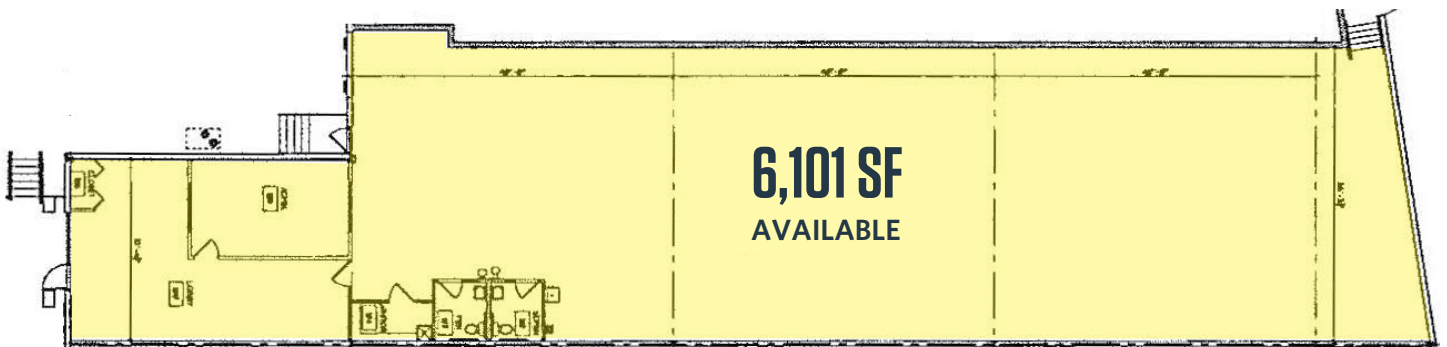
Columbia, MD 21046 | Howard County

SITE PLAN



FLOOR PLAN

OAKLAND MILLS ROAD



Spence Daw
sdaw@klnb.com
443-574-1429

David J. Fritz CCIM, SIOR
dfritz@klnb.com
443-574-1410

Steele Stanwick
sstanwick@klnb.com
443-574-1420

Jesse Schwartzman
jschwartzman@klnb.com
443-632-2067

CLOSE-UP AERIAL VIEW



STONEWOOD
BUSINESS CENTER
6,101 SF AVAILABLE

7165

7175

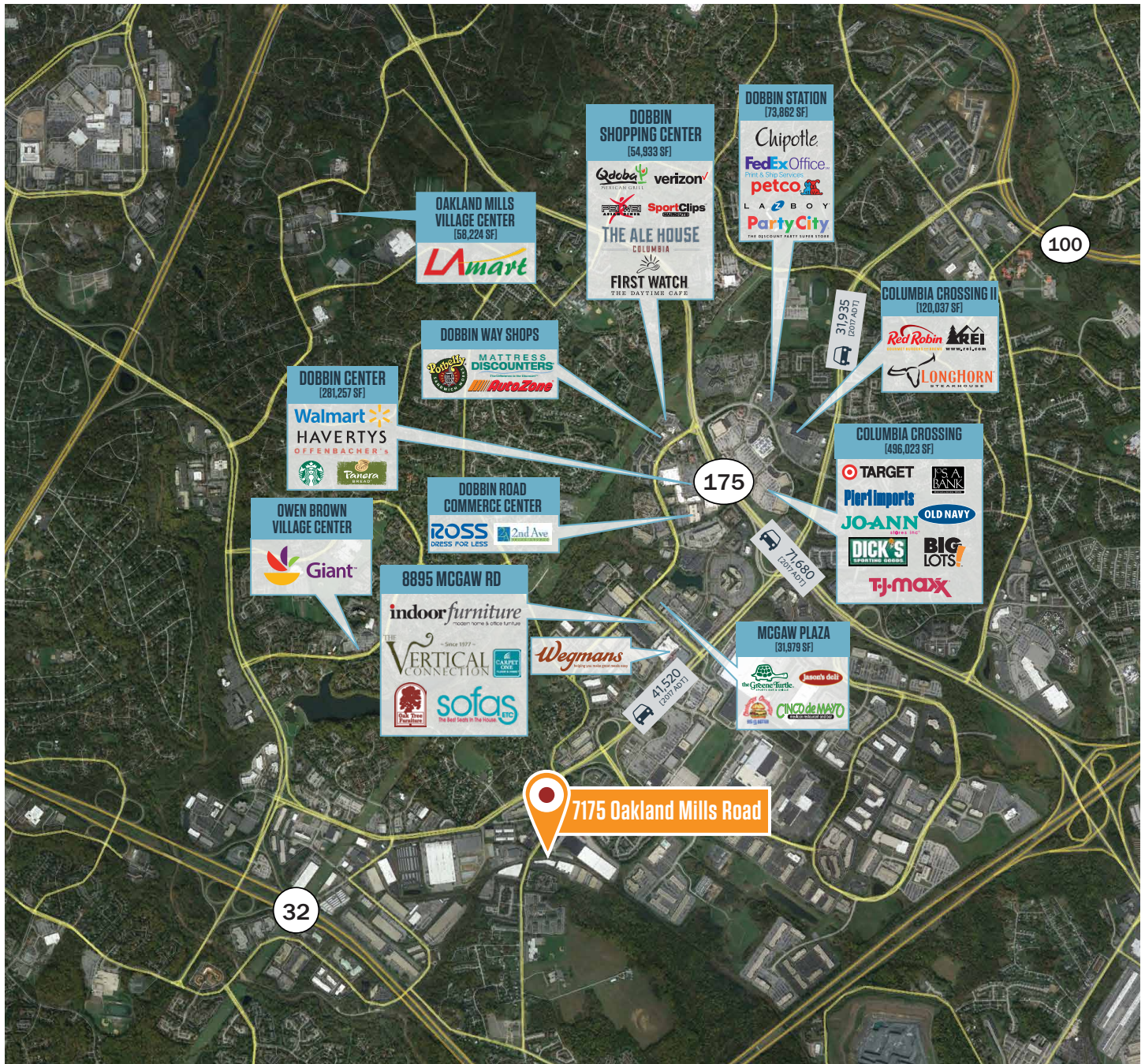


7175 OAKLAND MILLS ROAD

Columbia, MD 21046 | Howard County



MARKET AERIAL



While we have no reason to doubt the accuracy of any of the information supplied, we cannot, and do not, guarantee its accuracy. All information should be independently verified prior to a purchase or lease of the property. We are not responsible for errors, omissions, misuse, or misinterpretation of information contained herein and make no warranty of any kind, express or implied, with respect to the property or any other matters.

Spence Daw
sdaw@klnb.com
443-574-1429

David J. Fritz CCIM, SIOR
dfritz@klnb.com
443-574-1410

Steele Stanwick
sstanwick@klnb.com
443-574-1420

Jesse Schwartzman
jschwartzman@klnb.com
443-632-2067

9881 Broken Land Pkwy, #300
Columbia, MD 21046
klnb.com