



# RAIL SERVED WAREHOUSE SPACE AVAILABLE ON 1900 WEST

## Portfolio Summary

- Two Buildings Available:
  - » Building S: 16,364 SF (South End)
  - » Building N: 7,709 SF (North End)
- Excellent location with easy access on 1900 West in West Haven
- Zoning: M-1
- 5.4 Acre fully improved, shared fenced yard



**Craig Boyer**  
Associate Director  
+1 801 698 3333  
craig.boyer@cushwake.com  
cushmanwakefield.com

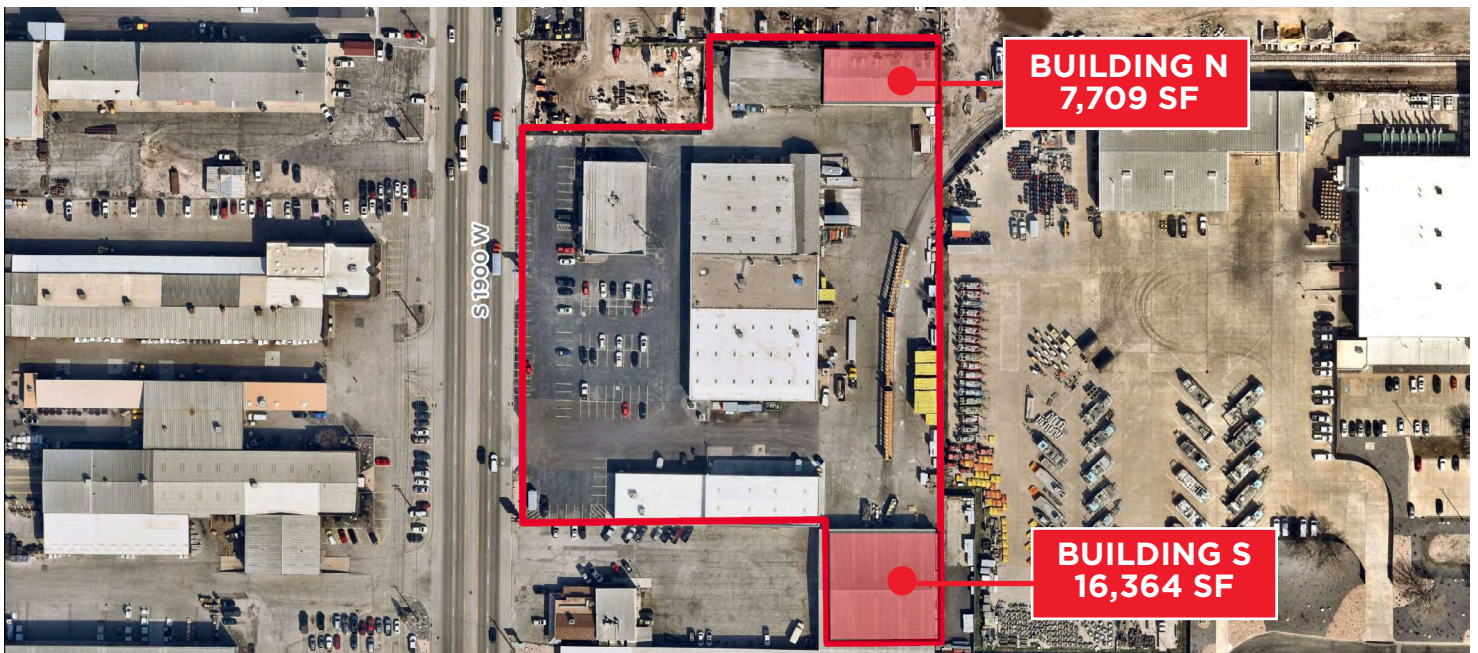
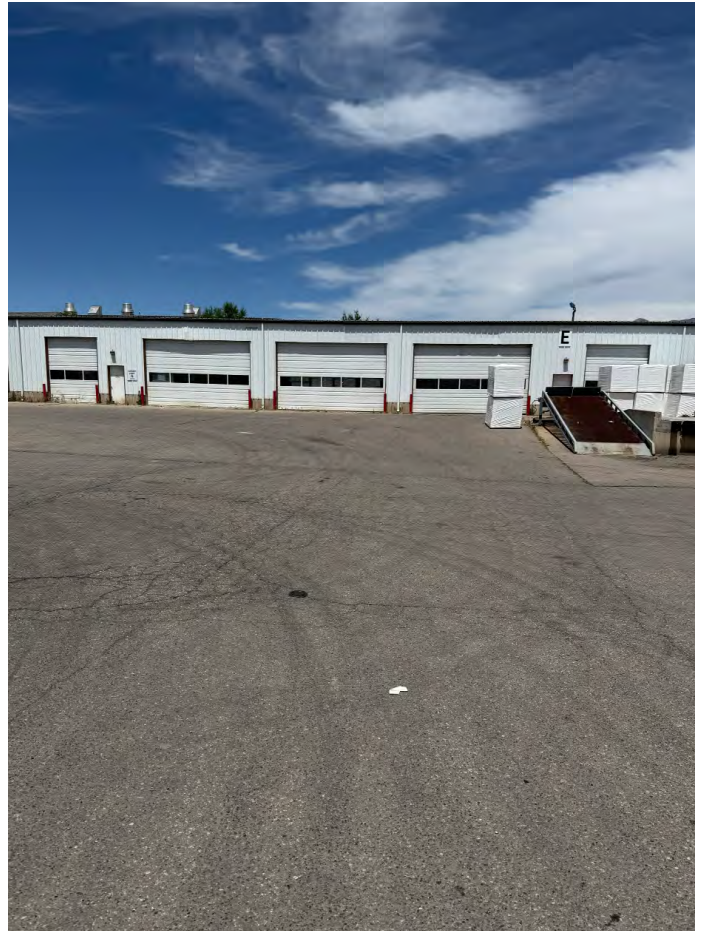
# LUMBER WAREHOUSE BUILDING S

<b>SIZE</b>	16,364 SF
<b>LEASE RATE</b>	\$0.95 PSF/NNN
<b>OFFICE</b>	748 SF
<b>WAREHOUSE</b>	15,616 SF
<b>POWER</b>	120/208 V, 3-phase
<b>LOADING</b>	2 Ground Level Doors 20' x 14'
<b>CLEAR HEIGHT</b>	15' with 22' on Center

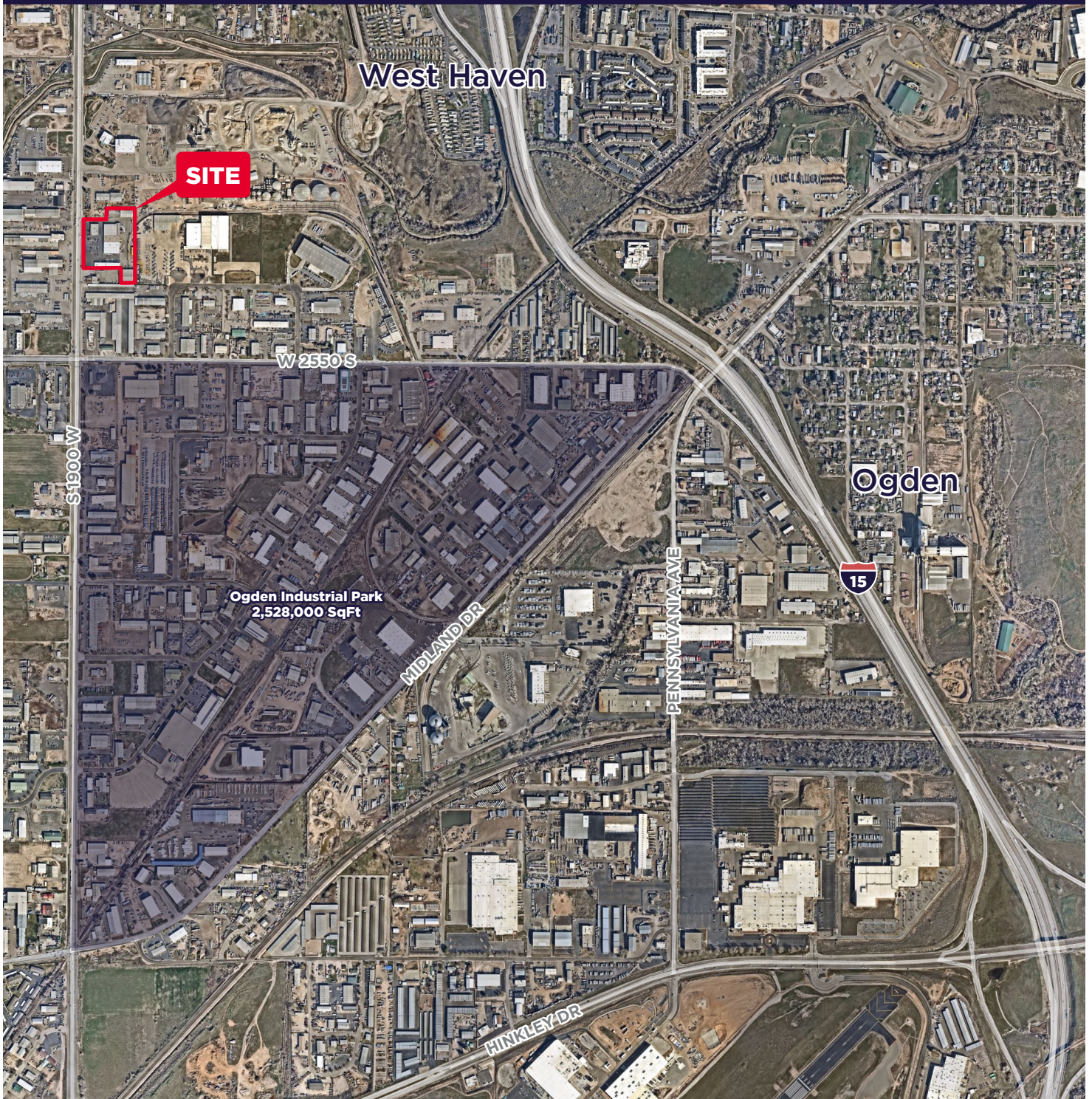


# STORAGE WAREHOUSE BUILDING N

SIZE	7,709 SF
LEASE RATE	\$1.15 PSF/NNN
POWER	120/208 V, 3-phase
GL DOORS	(3) 20' x 12' and (1) 10' x 12'
DH DOORS	(1) 10' x 12'
CLEAR HEIGHT	14'



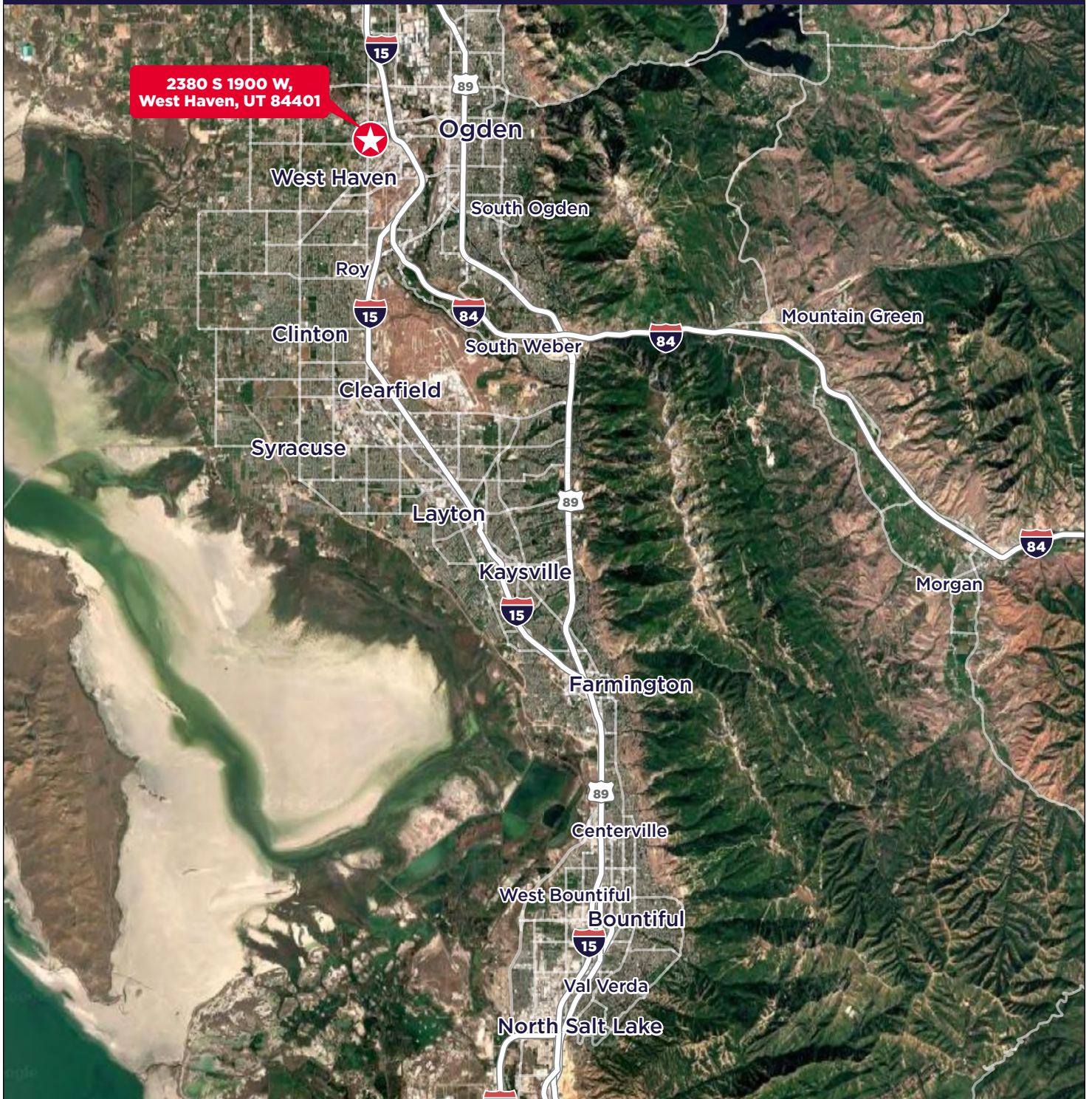
**Murphy Door**  
2380 South 1900 West, West Haven, UT



**Craig Boyer**  
Associate Director  
+1 801 698 3333  
craig.boyer@cushwake.com

 **CUSHMAN & WAKEFIELD**  
cushmanwakefield.com

**Murphy Door**  
2380 South 1900 West, West Haven, UT



**Craig Boyer**  
Associate Director  
+1 801 698 3333  
craig.boyer@cushwake.com

**CUSHMAN & WAKEFIELD**  
cushmanwakefield.com