



The Campus that has Everything.

CORPORATE POINTE at WEST HILLS

Matthew Heyn

+1 818 334 1860
matt.heyne@colliers.com
Lic. No. 01306148

David Solomon

+1 818 937 4545
david.solomon@colliers.com
Lic. No. 01209699

Caitlin Hoffman

+1 818 334 1850
caitlin.hoffman@colliers.com
Lic. No. 01935762

AVAILABILITIES

8407



SUITE	RSF
200*	±18,340
260	±4,523
270*	±8,525



*Suites 200 & 270
contiguous to ±26,865 RSF

8511



SUITE	RSF
120	±1,535
130	±4,004
250	±9,824
300	±20,962



8521



SUITE	RSF
150	±7,498
220	±1,406
250	±36,050
320*	±10,256
340*	±19,805
350*	±7,090

*Suites 320, 340 & 350
contiguous to ±37,151 RSF

HIGHLIGHTS

- Efficient suites ranging from ±4,000 SF to 75,000 SF
- Abundant 5/1,000 parking (potential for more)
- Program: **CAMPUS LIFE** offering more amenities than any other office campus in the region
- Full service campus cafe
- Conference facilities available to accommodate up to 144 people
- Flexible M-1 zoning
- Energy Star-rated buildings
- Building signage opportunities
- Panoramic mountain views



JOIN THE TEAM

TEAMHealth.



ThermoFisher
SCIENTIFIC



First American Title™



[Home](#)

[Campus Highlights](#)

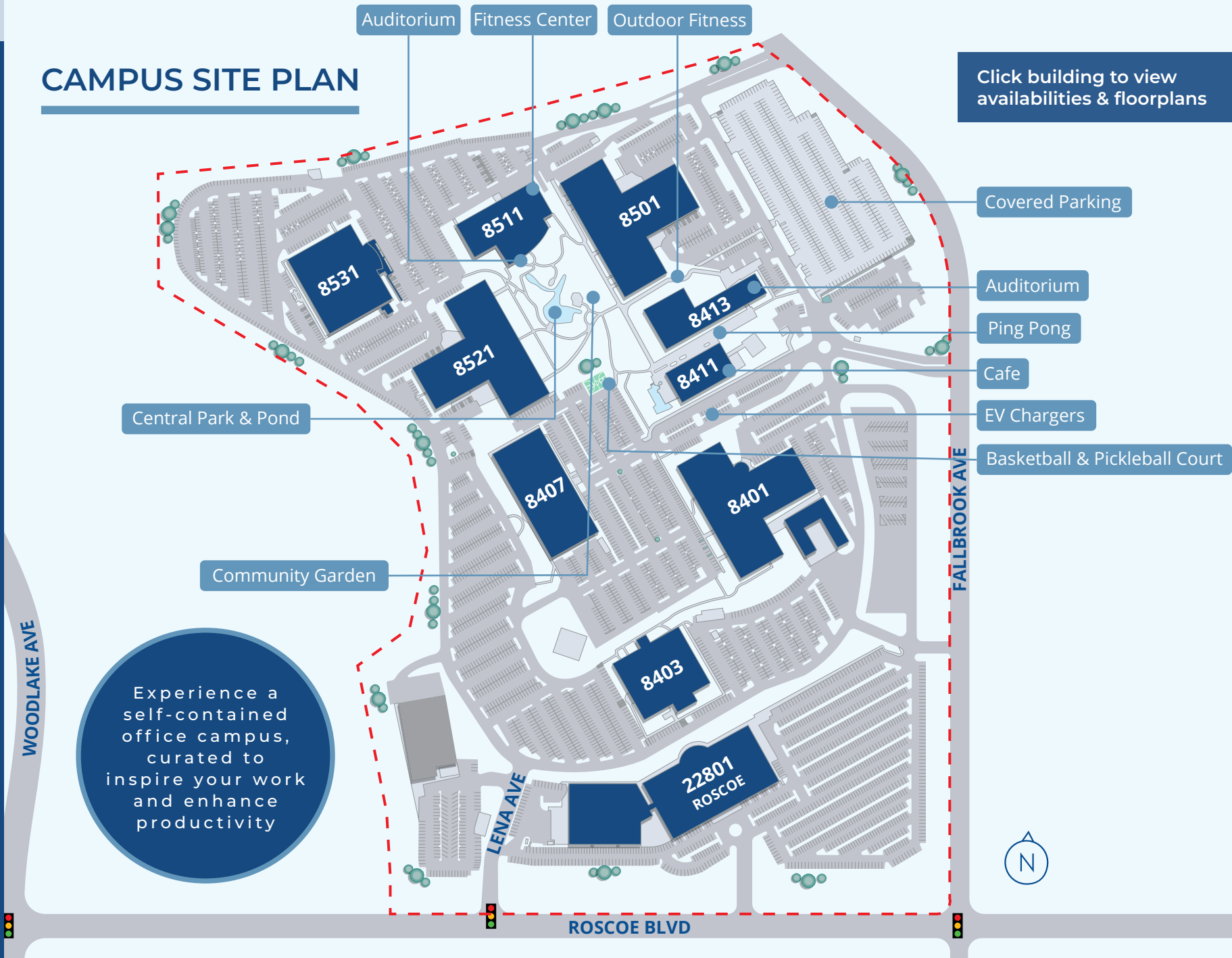
[Workforce](#)

[Campus Life & Amenities](#)

[Ownership](#)

[Available Space](#)

CAMPUS SITE PLAN



Experience a self-contained office campus, curated to inspire your work and enhance productivity

Click building to view availabilities & floorplans

CORPORATE POINTE at WEST HILLS

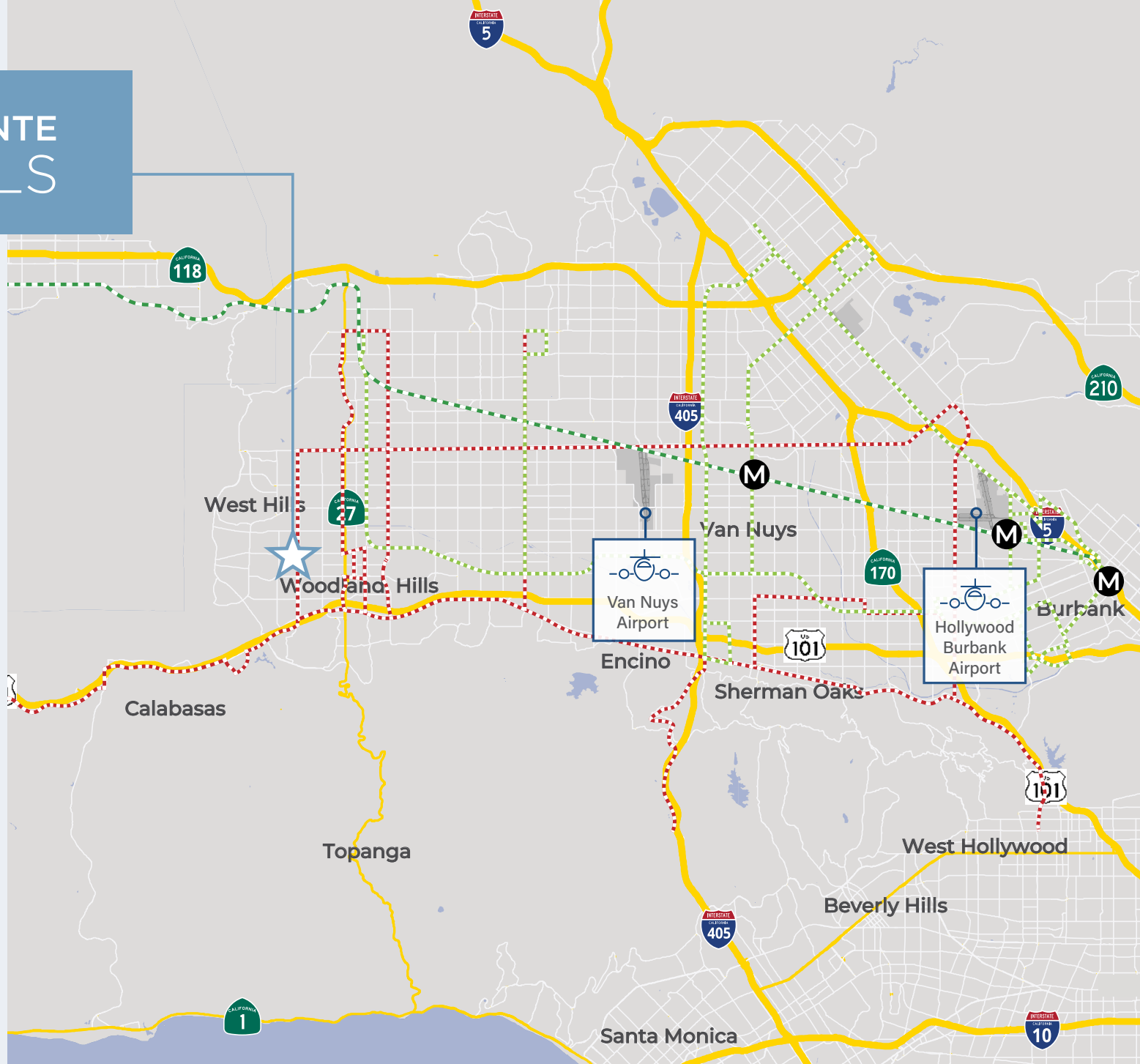


Ideal labor pool of ~2M employees within 20 miles of the property



Efficient mass transit connects the Corporate Pointe campus to Southern California's deep pool of labor & talent

MAP LEGEND	
	MetroLink Stations
	MetroLink Line
	Rapid Route
	Municipal Bus Line



OUTDOOR MEETING SPACES



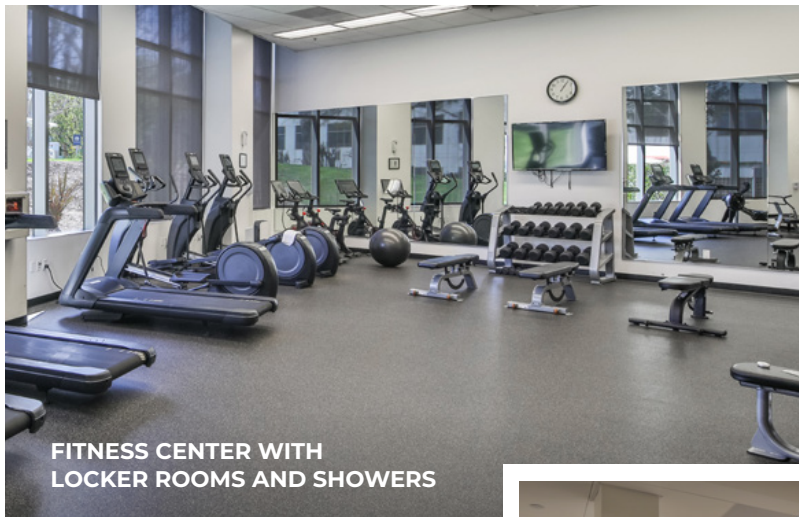
BASKETBALL & PICKLEBALL COURT



TRANQUIL WATER FEATURE



WALKING & JOGGING PATH



FITNESS CENTER WITH LOCKER ROOMS AND SHOWERS



LIVE CONCERT SERIES



EMPLOYEE TRAINING FACILITIES



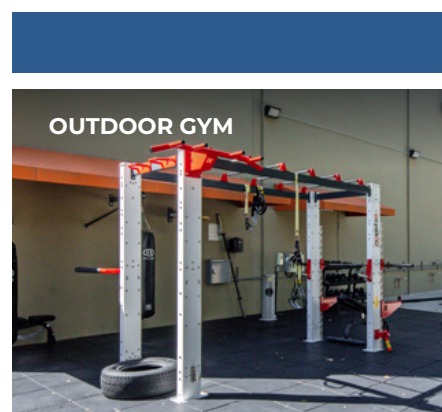
WI-FI SERVICE



CAFE WITH COFFEE BAR



CONFERENCE CENTER



OUTDOOR GYM

ON-SITE AMENITIES

[CLICK TO VIEW AMENITIES VIDEO](#)

CAFE

- Professionally operated
- Hot food stations, salad bar and grab-n-go options
- Full-service coffee bar
- Free Wi-Fi access
- Catering available
- Outdoor seating with tranquil water feature

PARKING

- 5/1,000 RSF free covered and surface parking

LIFESTYLE

- Basketball and pickleball court
- Ping pong
- Walking/jogging path
- Outdoor music at the pond and eating areas
- Complimentary fitness program, including bootcamp, cardio sculpt, and yoga classes

CONFERENCE CENTER

- Banquet/conference facilities and board room available

AUDITORIUMS

- Two auditoriums with the capacity to accommodate approximately 150 people each

INDOOR & OUTDOOR FITNESS FACILITY

- Free membership for all tenants
- Locker room and towel service



OWNERSHIP

KENNEDY WILSON

Kennedy Wilson is a global real estate investment company with 33+ years of experience owning 25.3 million square feet globally. Working in lockstep with their equity partner, Fairfax, the well-capitalized partnership with no debt is prepared to meet tenant demand and fund improvements.





8407 FALLBROOK

8407 FALLBROOK

Availabilities

Second Floor

Brand new lobby, restrooms & corridors

Suite 200*: ±18,340 RSF

Suite 260: ±4,523 RSF

Suite 270*: ±8,525 RSF

*Suites 200 & 270 contiguous to ±26,865 RSF





8511 FALLBROOK

8511 FALLBROOK

Availabilities

First Floor

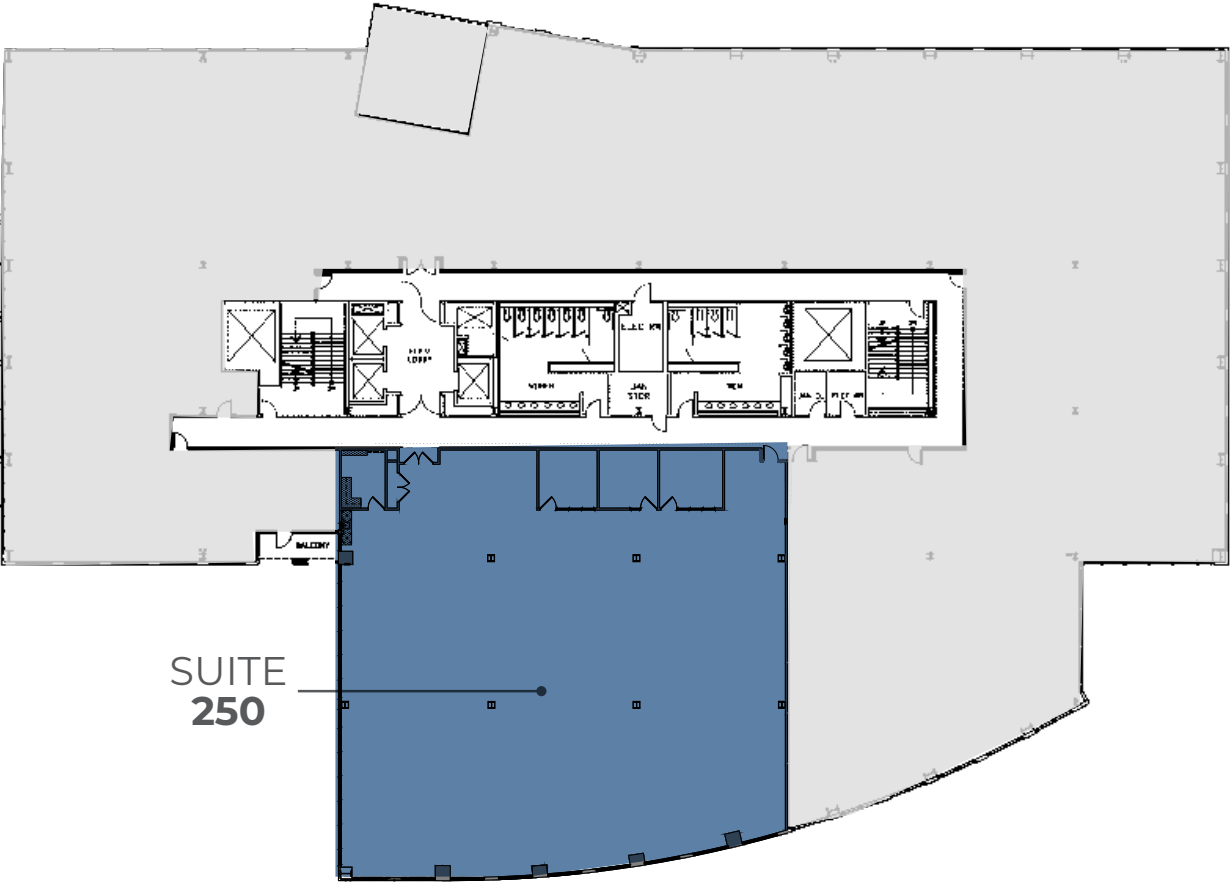
Suite 120: ±1,535 RSF
Available 8/1/2027 or Sooner

Suite 130: ±4,004 RSF



Second Floor

Suite 250: ±9,824 RSF

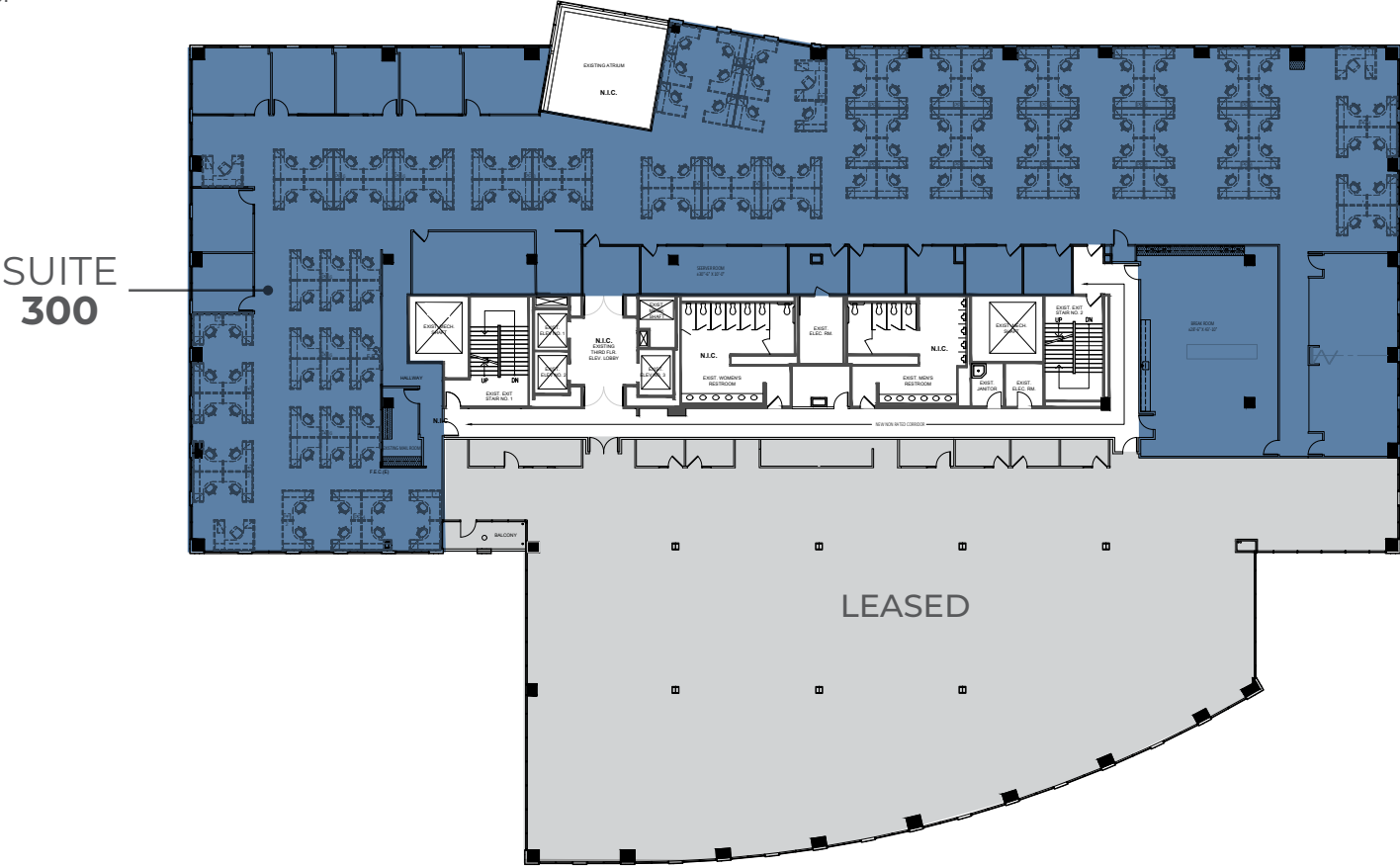


8511 FALLBROOK

Availabilities

Third Floor

Suite 300: ±20,962 RSF
Available 8/1/2027 or Sooner





8521 FALLBROOK

8521 FALLBROOK

Availabilities

First Floor

Suite 150: ±7,498 RSF



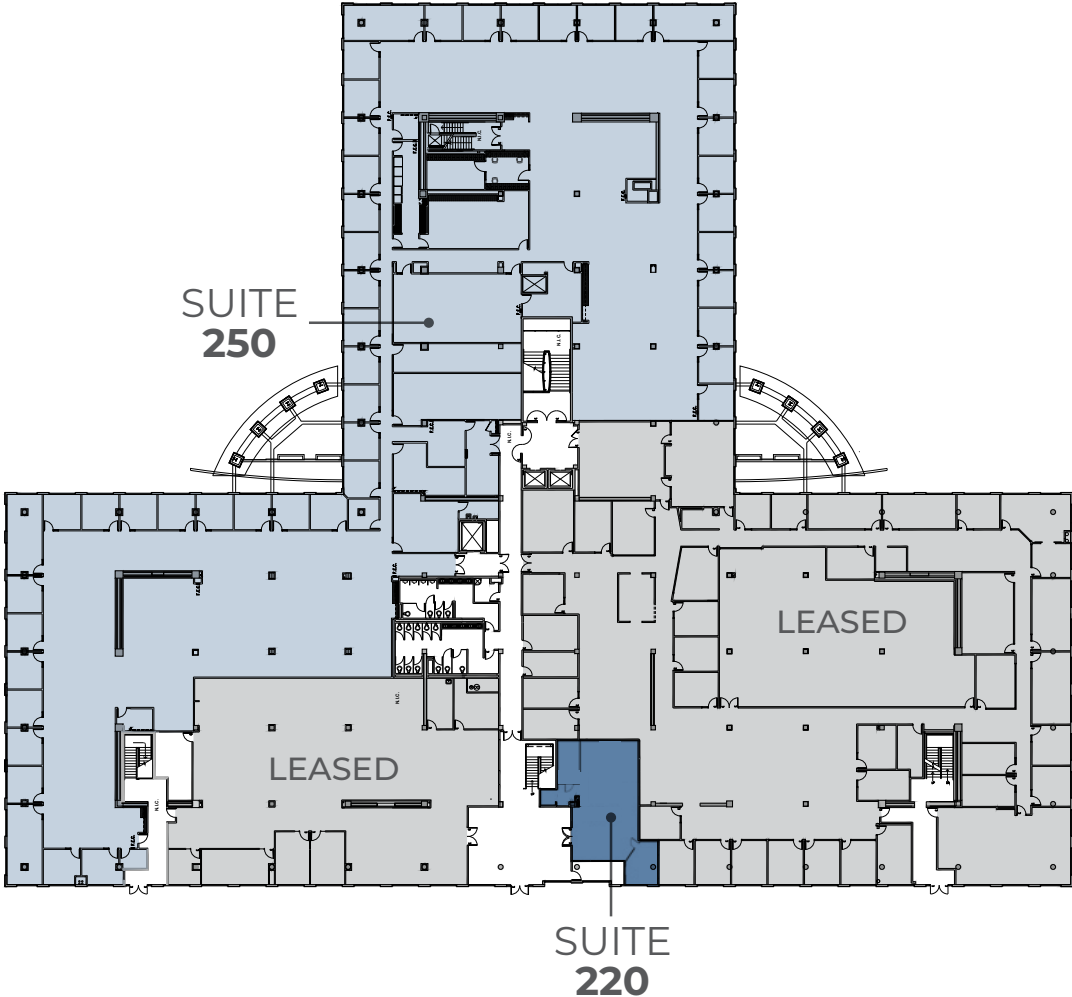
8521 FALLBROOK

Availabilities

Second Floor

Suite 220: ±1,402 RSF

Suite 250: ±36,050 RSF
Available 12/1/2028



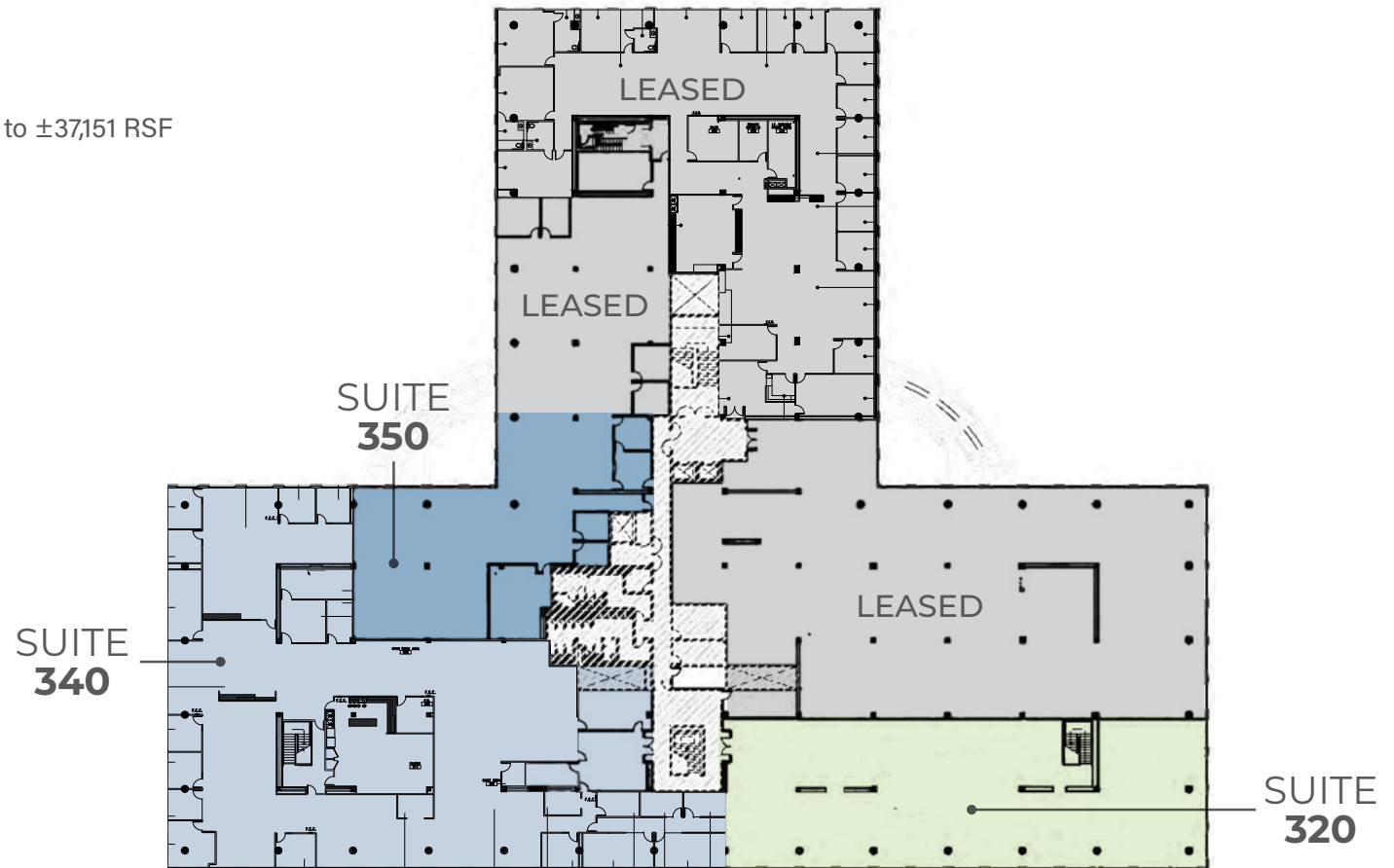
8521 FALLBROOK

Availabilities

Third Floor

- Suite 320*: ±10,256 RSF
- Suite 340*: ±19,805 RSF
- Suite 350*: ±7,090 RSF

*Suites 320, 340 & 350 contiguous to ±37,151 RSF





KENNEDY WILSON

Colliers

CORPORATE POINTE at WEST HILLS

Matthew Heyn

+1 818 334 1860

matt.heyn@colliers.com

Lic. No. 01306148

David Solomon

+1 818 937 4545

david.solomon@colliers.com

Lic. No. 01209699

Caitlin Hoffman

+1 818 334 1850

caitlin.hoffman@colliers.com

Lic. No. 01935762

This document/email has been prepared by Colliers for advertising and general information only. Colliers makes no guarantees, representations, or warranties of any kind, expressed or implied, regarding the information including, but not limited to, warranties of content, accuracy, and reliability. Any interested party should undertake their own inquiries as to the accuracy of the information. Colliers excludes unequivocally all inferred or implied terms, conditions and warranties arising out of this document and excludes all liability for loss and damages arising there from. This publication is the copyrighted property of Colliers and /or its licensor(s). © 2026. All rights reserved. This communication is not intended to cause or induce breach of an existing listing agreement. Colliers International Greater Los Angeles, Inc.