

LUNA LANDING RETAIL CENTER

1225 LUNA AVENUE
RAPID CITY, SD 57701

FOR LEASE \$25.00-27.00/SF/YR NNN



14,320 SF | 7 UNITS | DRIVE-THRU AVAILABLE
FALL 2026 DELIVERY

EXCLUSIVELY LISTED BY:

Chris Long, SIOR, CCIM
Commercial Broker
605.939.4489
chris@rapidcitycommercial.com

Gina Plooster
Broker Associate
605.519.0749
gina@rapidcitycommercial.com



KW Commercial
2401 W Main St, Rapid City, SD 57702
605.335.8100
www.RapidCityCommercial.com
Keller Williams Realty Black Hills

**1225 LUNA AVENUE
RAPID CITY, SD 57701**

PROPERTY DETAILS

SITE & BUILDING INFORMATION

Building Size	14,320 SF
Suites	7 suites (combinable)
Land Size	2.2 Acres
Zoning	General Commercial
Parking	115 on-site spaces; 6 ADA stalls
Delivery	Vanilla shell
Availability	October 2026
LEASE DETAILS	
Minimum Term	5 years
TI Allowance	\$20.00/SF

PROPERTY OVERVIEW

New-construction retail center ideally positioned for restaurant, retail, office, medical, and franchise tenants in Rapid City's primary retail corridor. Luna Landing offers 14,320 SF across seven suites on a 2.2-acre corner site near I-90, Eglin St, and Anamosa St.

The location places tenants near Rushmore Crossing, Uptown Rapid, Walmart, and a dense mix of national retailers, restaurants, and hotels serving Rapid City's 250-mile trade area. Rapid City's visitor economy adds another demand driver, with 3.93 million annual visitors and \$527.3 million in visitor spending, including \$157 million spent on food and beverage and \$89.4 million spent on retail in 2025.

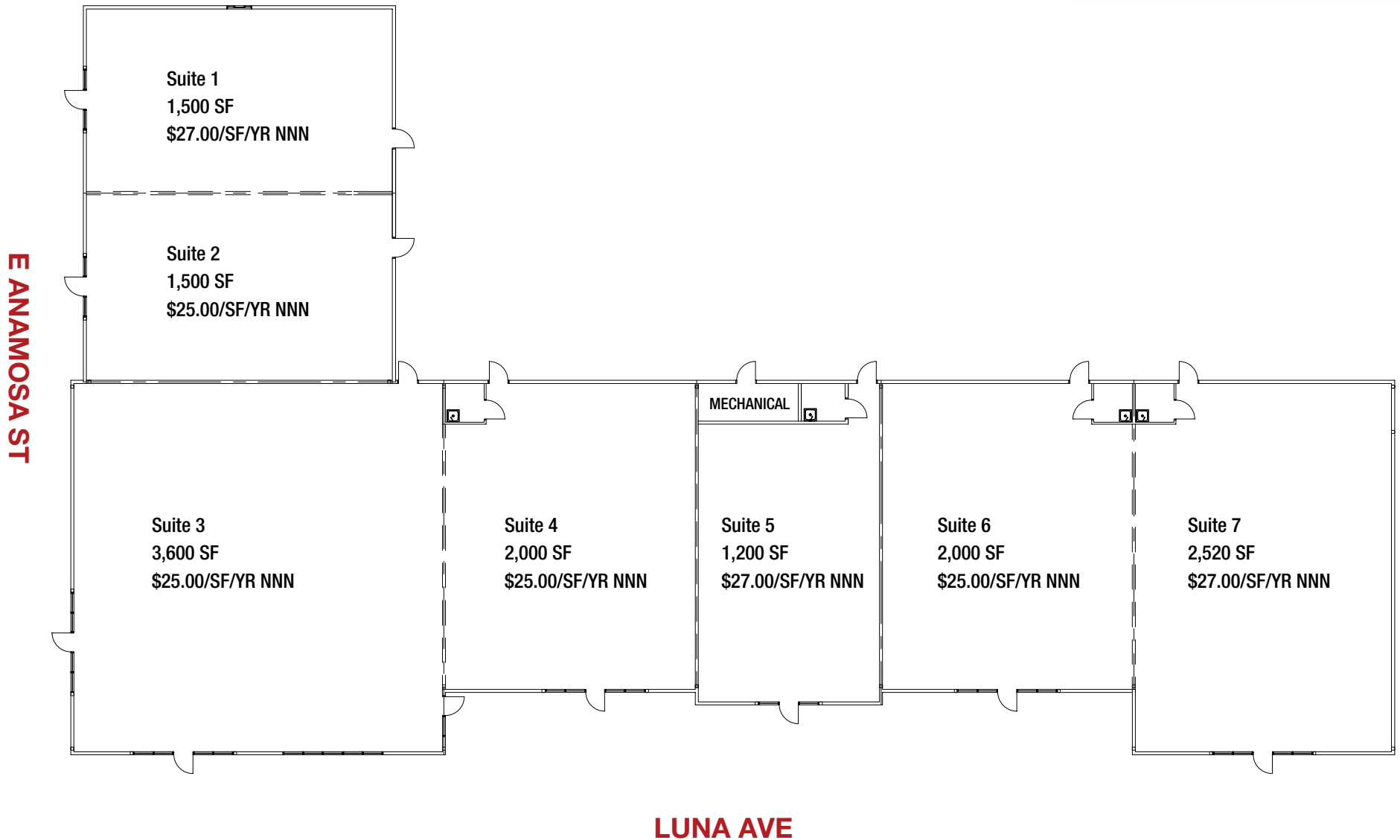
Suites range from 1,200 to 3,600 SF and may be combined for larger users. The center will be delivered in vanilla shell condition with a \$20.00/SF tenant improvement allowance. Suite 1 offers drive-thru lane capability, while Suite 3 includes the option for a fenced outdoor patio. A future lighted intersection is planned to improve long-term access and visibility. The final extension of Anamosa St was approved, positioning the property on one of the primary east/west arterials in Rapid City.

SUITE AVAILABILITY

	SUITE 1	SUITE 2	SUITE 3	SUITE 4	SUITE 5	SUITE 6	SUITE 7
Suite Size	1,500 SF	1,500 SF	3,600 SF	2,000 SF	1,200 SF	2,000 SF	2,520 SF
Base Rent	\$27.00/SF/YR	\$25.00/SF/YR	\$25.00/SF/YR	\$25.00/SF/YR	\$27.00/SF/YR	\$25.00/SF/YR	\$27.00/SF/YR
NNN (est.)	\$5.00/SF/YR	\$5.00/SF/YR	\$5.00/SF/YR	\$5.00/SF/YR	\$5.00/SF/YR	\$5.00/SF/YR	\$5.00/SF/YR
Monthly Base Rent	\$3,375	\$3,125	\$7,500	\$4,167	\$2,700	\$4,167	\$5,670
Notes	Corner unit; drive-thru		Anchor suite; restaurant concept; patio				North end-cap

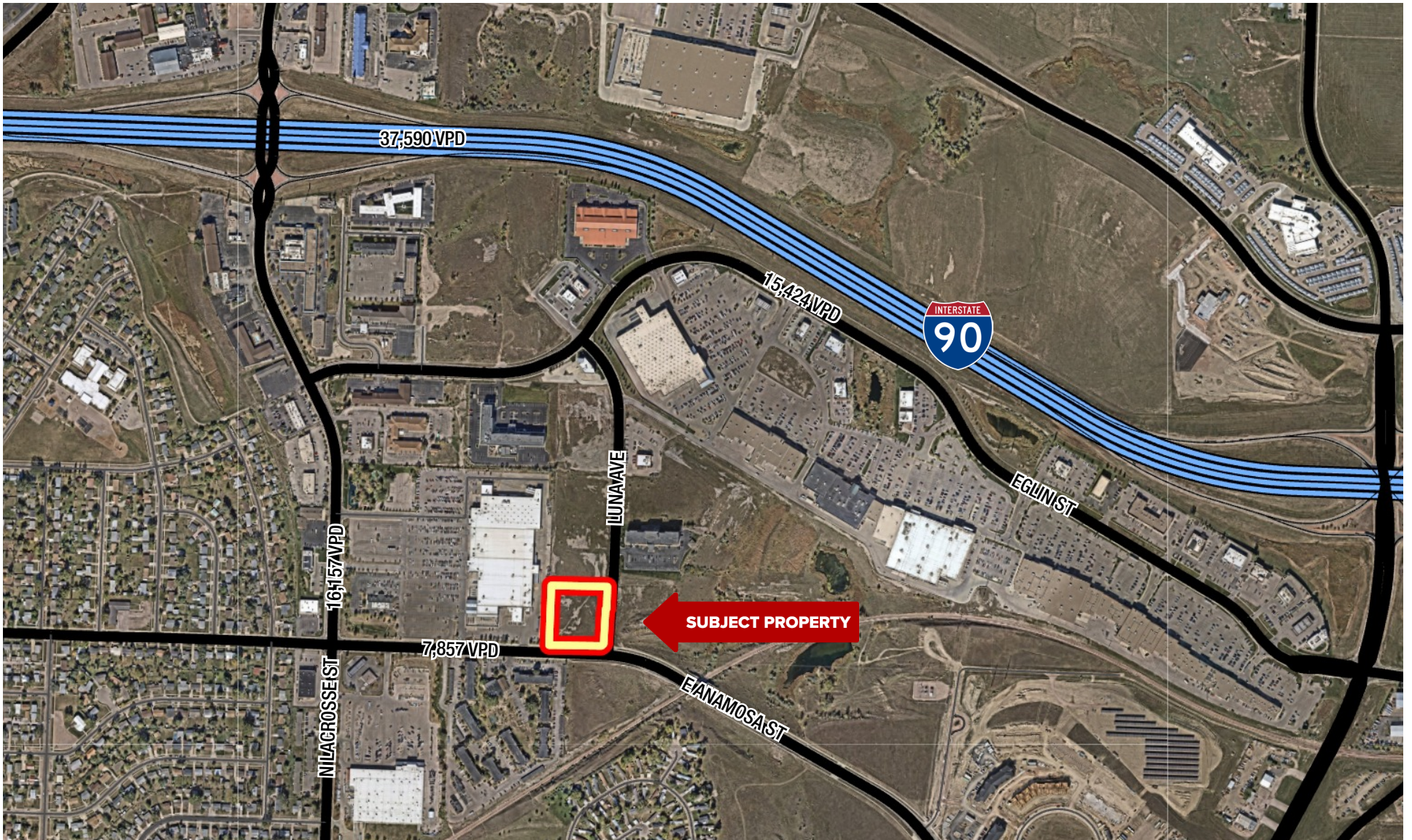
1225 LUNA AVENUE
RAPID CITY, SD 57701

BUILDING LAYOUT



1225 LUNA AVENUE
RAPID CITY, SD 57701

LOCATION OVERVIEW



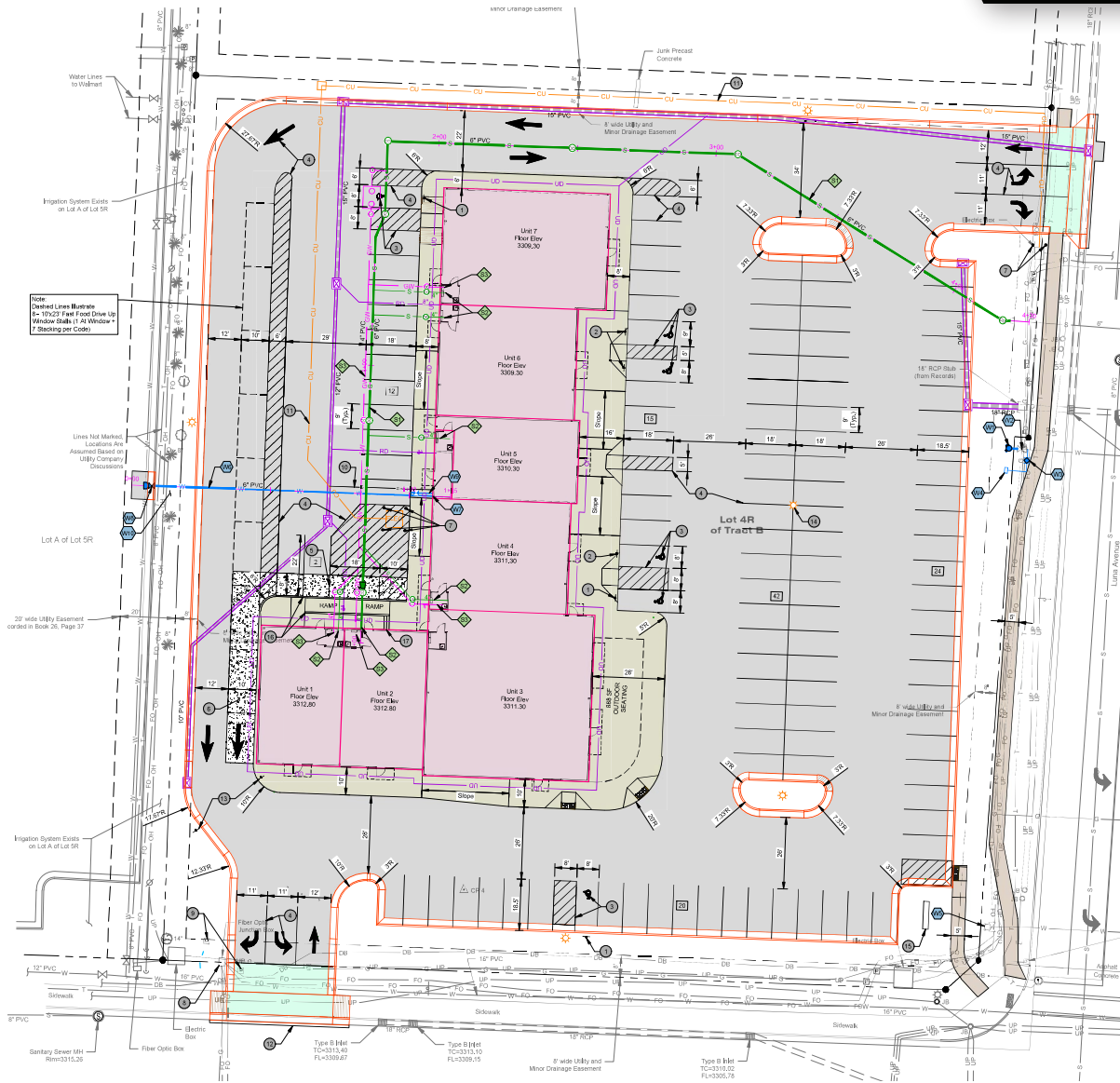
1225 LUNA AVENUE
RAPID CITY, SD 57701

LOCATION OVERVIEW



1225 LUNA AVENUE RAPID CITY, SD 57701

SITE PLAN



LUNA AVE

E ANAMOSA ST

1225 LUNA AVENUE
RAPID CITY, SD 57701

BUILDING RENDERINGS

Northwest at E Anamosa St & Luna Ave



Northeast from E Anamosa St



Southeast



STATISTICS

WELCOME TO SOUTH DAKOTA AND THE BLACK HILLS!

The Mount Rushmore State of South Dakota has carved a solid reputation for business friendliness. It is consistently ranked in the top five states for setting up and conducting business. Small and big companies alike are discovering South Dakota's central location and progressive business climate.

The Black Hills boasts the country's most recognized national monument - Mount Rushmore - bringing millions of tourists from all over the world to Western South Dakota every year. For the past 10 years, South Dakota tourism has posted an increase in visitation, visitor spending and overall impact on the state's economy with 14.9 million visitors to South Dakota, \$5.09 billion in visitor spending, and 58,824 jobs sustained by the tourism industry.

BUSINESS FRIENDLY TAXES

- NO** corporate income tax
- NO** franchise or capital stock tax
- NO** personal property or inventory tax
- NO** personal income tax
- NO** estate and inheritance tax



REGIONAL STATISTICS

Rapid City Metro Population	156,934
Rapid City Population Growth	1.83% YoY
Rapid City Unemployment Rate	1.8%
Household Median Income	\$70,870

SD TOURISM 2024 STATISTICS

Room Nights	5.2 M Booked
Park Visits	8.7 M Visitors
Total Visitation	14.9 M Visitors
State & Local Tax Revenue	\$398.7 M

RAPID CITY

- #1** AreaDevelopment—Leading Metro in the Plains
- #1** US Census—Fastest-Growing City in Midwest
- #10** CNN Travel—Best American Towns to Visit
- #17** Milken Institute—Best-Performing Small City

SOUTH DAKOTA

- #1** Business Tax Climate Index
- #1** Most Stable Housing Markets
- #2** States with Best Infrastructure
- #3** Best States for Business Costs
- #3** Business Friendliness
- #4** Forbes Best States for Starting a Business
- #4** Realtor.com—Emerging Housing Markets
- #5** Best States to Move To
- #33** WalletHub—Happiest Cities in America

1225 LUNA AVENUE
RAPID CITY, SD 57701

DISCLAIMER

All materials and information received or derived from KW Commercial its directors, officers, agents, advisors, affiliates and/or any third party sources are provided without representation or warranty as to completeness, veracity, or accuracy, condition of the property, compliance or lack of compliance with applicable governmental requirements, developability or suitability, financial performance of the property, projected financial performance of the property for any party's intended use or any and all other matters.

EACH PARTY SHALL CONDUCT ITS OWN INDEPENDENT INVESTIGATION AND DUE DILIGENCE.

Any party contemplating or under contract or in escrow for a transaction is urged to verify all information and to conduct their own inspections and investigations including through appropriate third-party independent professionals selected by such party. All financial data should be verified by the party including by obtaining and reading applicable documents and reports and consulting appropriate independent professionals. KW Commercial makes no warranties and/or representations regarding the veracity, completeness, or relevance of any financial data or assumptions. KW Commercial does not serve as a financial advisor to any party regarding any proposed transaction.

All data and assumptions regarding financial performance, including that used for financial modeling purposes, may differ from actual data or performance. Any estimates of market rents and/or projected rents that may be provided to a party do not necessarily mean that rents can be established at or increased to that level. Parties must evaluate any applicable contractual and governmental limitations as well as market conditions, vacancy factors and other issues in order to determine rents for or from the property. Legal questions should be discussed by the party with an attorney. Tax questions should be discussed by the party with a certified public accountant or tax attorney. Title questions should be discussed by the party with a title officer or attorney. Questions regarding the condition of the property and whether the property complies with applicable governmental requirements should be discussed by the party with appropriate engineers, architects, contractors, other consultants, and governmental agencies. All properties and services are marketed by KW Commercial in compliance with all applicable fair housing and equal opportunity laws.

