

## CORBIN PARK - OVERLAND PARK, KANSAS



### RETAIL/OFFICE HIGHLIGHTS

- Street-Level Spaces Available for Lease
- Suitable for Retail, Office, and Medical Tenants
- Located in the Corbin Park Retail Village in the major crossroads of Overland Park, Kansas
- Traffic counts of an estimated 10 million per year
- Surrounded by established high-end, large retailers

### LEASING CONTACTS

#### **MOLLY CRAWFORD MUNNINGHOFF**

P (816) 701-5013

[mcrawford@copaken-brooks.com](mailto:mcrawford@copaken-brooks.com)

#### **ERIN JOHNSTON**

P (816) 701-5028

[erjohnston@copaken-brooks.com](mailto:erjohnston@copaken-brooks.com)



# Welcome to Corbin Park,

a 1.1 million square foot retail village in one of the nation's most vibrant economies. Located at a major crossroads in Overland Park, KS, with easy highway access to Kansas City, Corbin Park's estimated traffic of 10 million per year will deliver the affluent customers you want.

Corbin Park gives shoppers a unique experience with its Tuscan-inspired architecture and sprawling, tree lined courtyards. Between the morning workout at Life Time Fitness and dinner at one of our restaurants, they can shop at national anchors like Von Maur and Scheels.



## DEMOGRAPHICS

	1 mile	3 miles	5 miles
Estimated Population	11,039	91,144	180,064
Households	5,065	34,011	69,601
Average Household Income	\$114,915	\$142,620	\$131,399
Median Age	34.7	39.4	40.1

[www.corbinparkop.com](http://www.corbinparkop.com)







# SPACE AVAILABLE







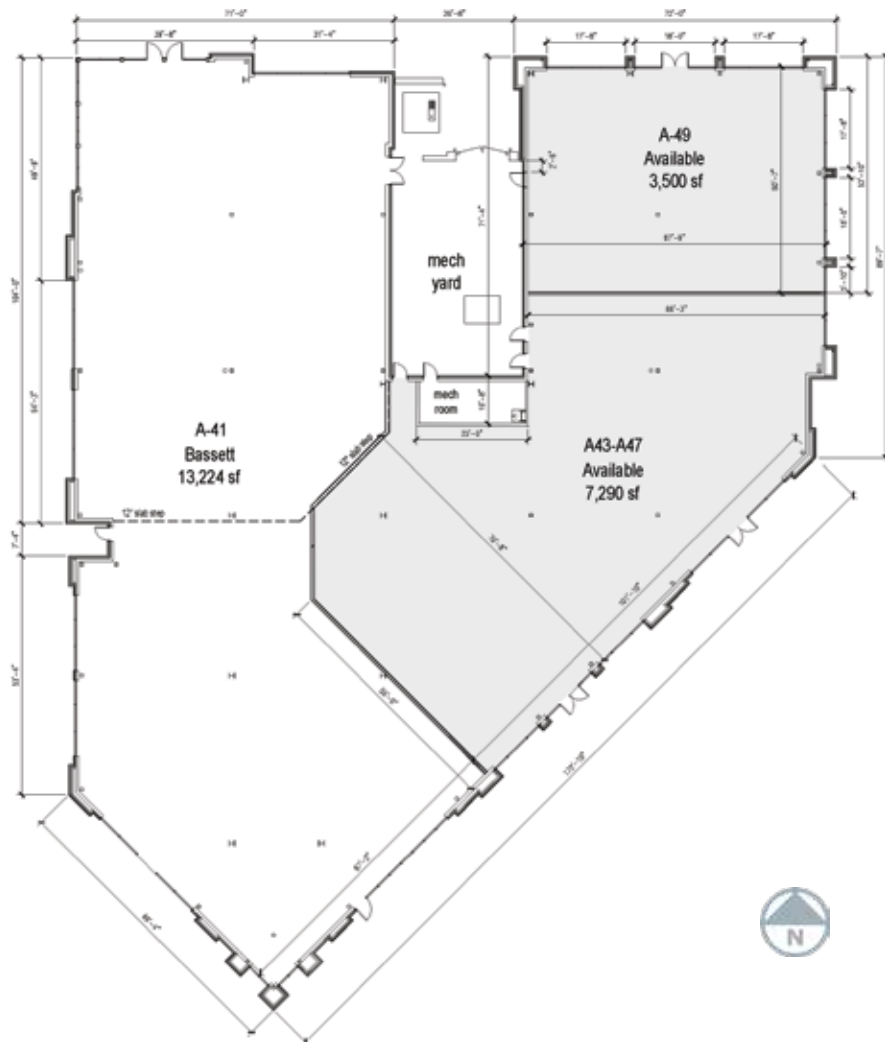


# SPACE AVAILABLE

## A2

6801 W 135<sup>th</sup> Street

- 10,790 SF Available (Divisible)
- Located in the heart of Corbin Park, adjacent to Bassett Furniture and Von Maur
- 135th Street visibility available





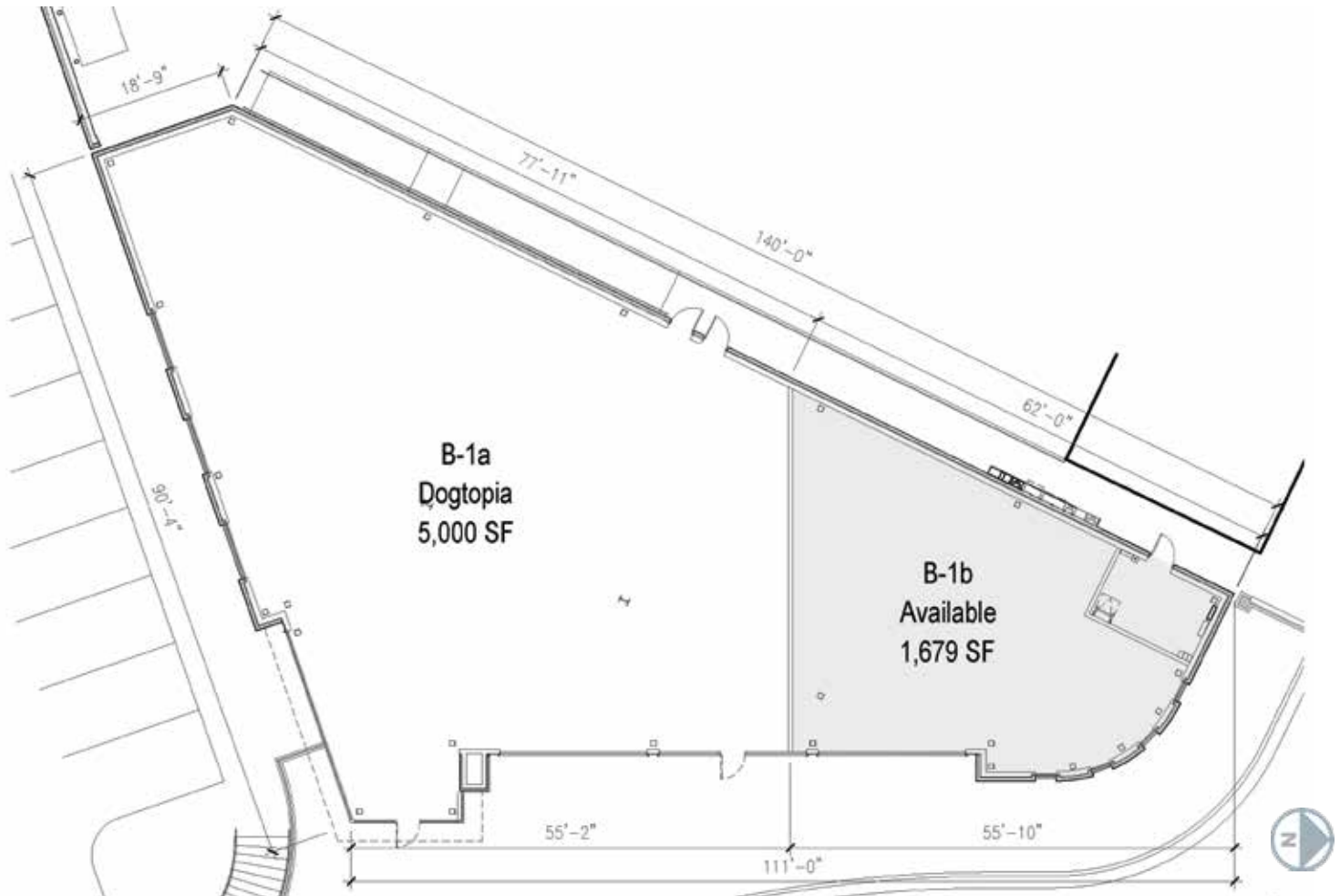




## B1

6905 W 135<sup>th</sup> Street

- 1,679 SF Available (Divisible)
- Located in the heart of Corbin Park, adjacent to JCPenney and Dogtopia

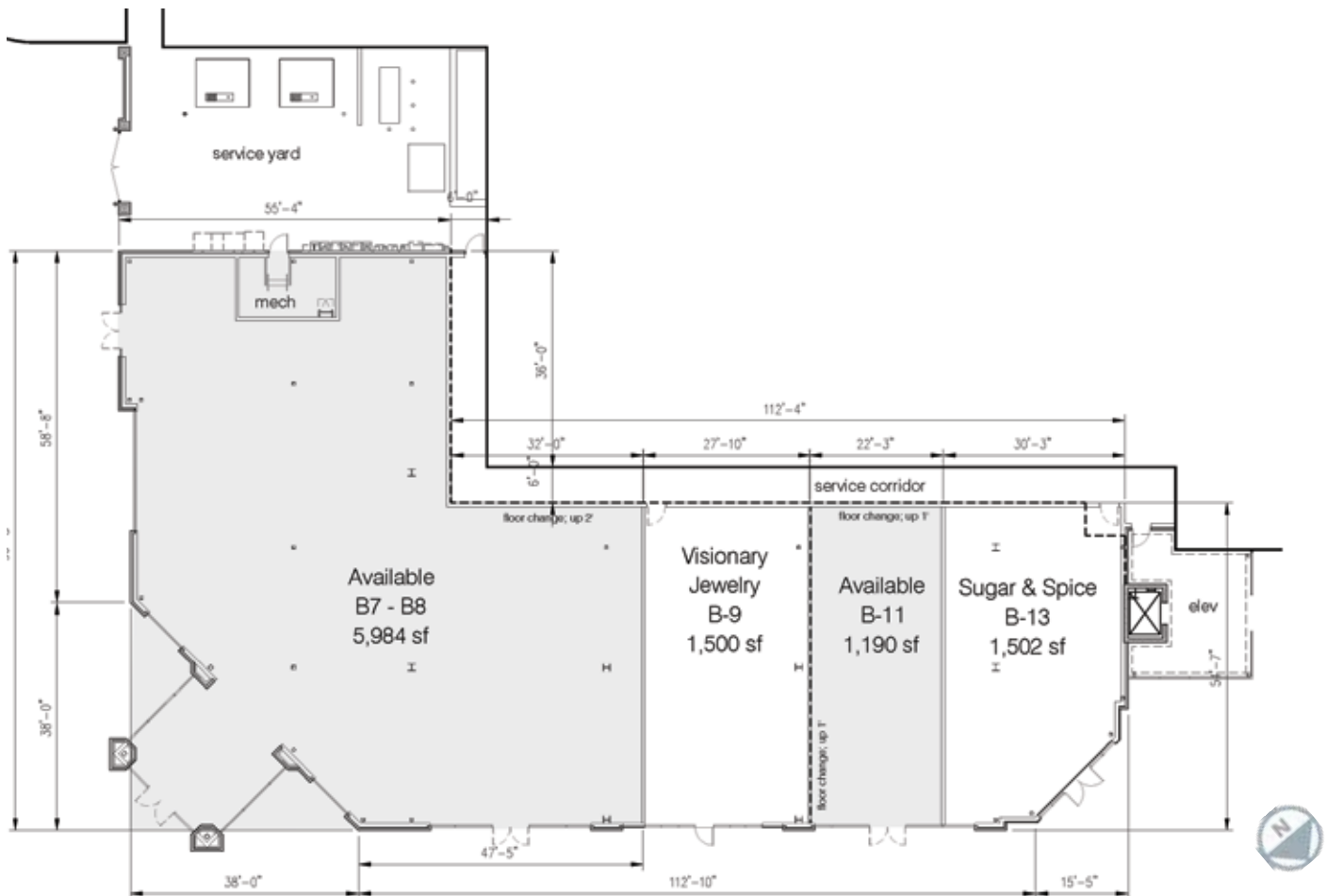




# B2

Carson Street and Hunter Drive

- 1,190 - 5,984 SF
- Located in the heart of Corbin Park, next to JCPenney
- Fronts new Corbin Crossing apartment development currently under construction

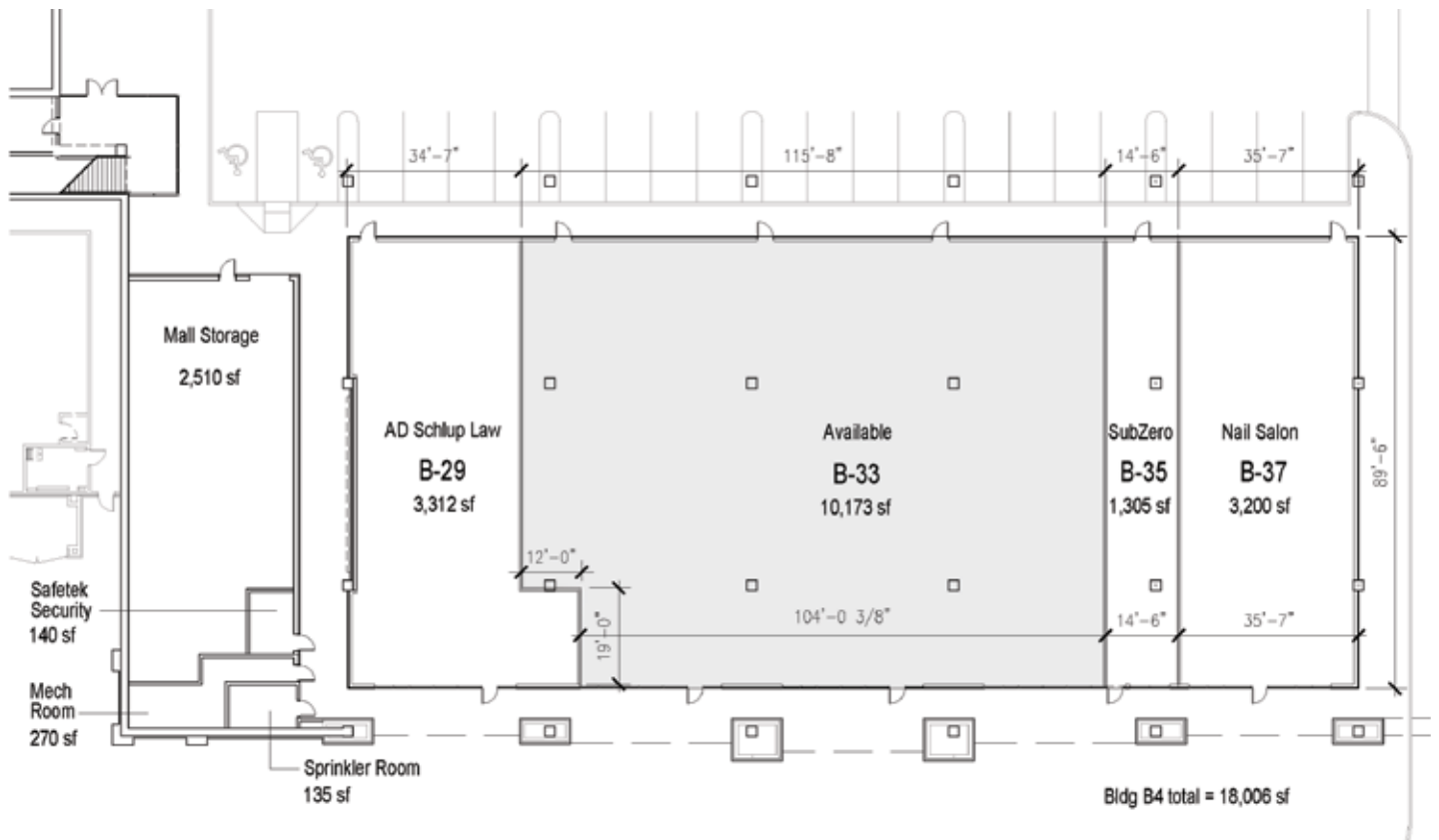




## B4

6917 W 135<sup>th</sup> Street

- 10,173 SF Available (Divisible)
- Street-level space with JC Penney on 2nd floor
- Great Metcalf visibility





# NOW LEASING RETAIL/OFFICE SPACE



## LEASING CONTACTS

**MOLLY CRAWFORD MUNNINGHOFF**

P (816) 701-5013

[mcrawford@copaken-brooks.com](mailto:mcrawford@copaken-brooks.com)

**ERIN JOHNSTON**

P (816) 701-5028

[ejohnston@copaken-brooks.com](mailto:ejohnston@copaken-brooks.com)