

Raymond N. Herb, Jr.
Susan M. Herb
Kathleen M. Herb
Jeffrey A. Carpenter



Realtors / Since 1927
(717) 272-5637



FOR LEASE in Lebanon County
412 Chestnut Street, Lebanon, PA 17042

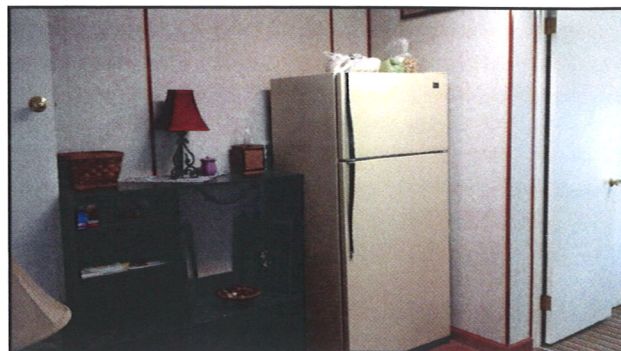


- ◆ *988 SF Office Space*
- ◆ *On 1st & 2nd Floor*
- ◆ *Ample Bath Facilities*
- ◆ *With Reception Area*
- ◆ *Several Private Offices*
- ◆ *Public Water & Sewer*
- ◆ *Standard Electric Service*
- ◆ *Gas Fired Warm Air Heat*
- ◆ *Window Air Conditioners*
- ◆ *Masonry & Frame Constr.*
- ◆ *Zoned OI Office/Institutional*
- ◆ *Three Parking Spaces in Rear*

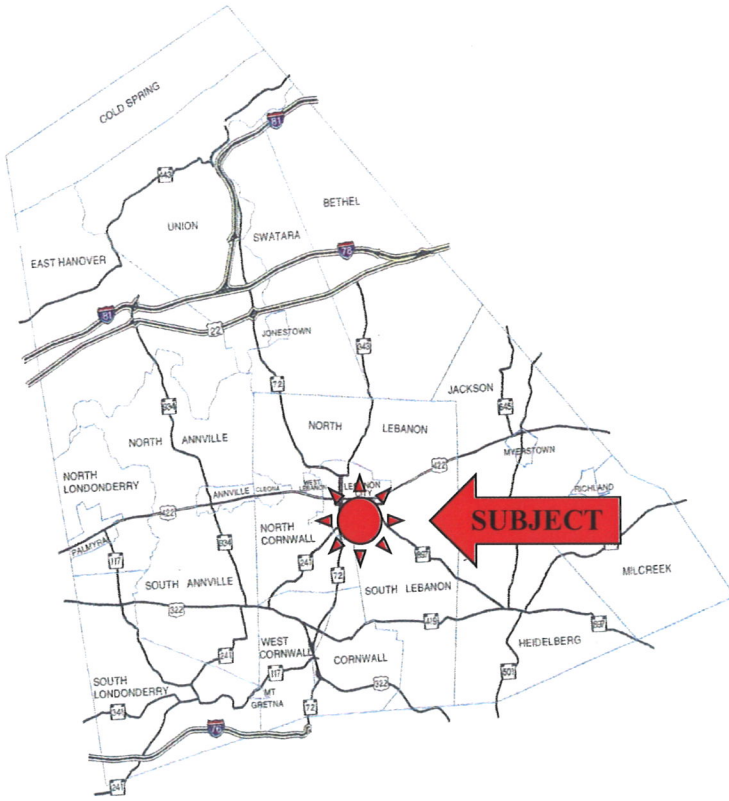
This property is located in the city of Lebanon and consists of office space on two floors. There is a reception area, private offices, two half-baths, and open office space on the second floor. Three parking spaces are included in the rear. If this fits your requirements, please give us a call or email at geller.re@comcast.net.

Call Ray Herb, Jr. at (717) 272-5637
Commercial/Industrial Sales and Leasing

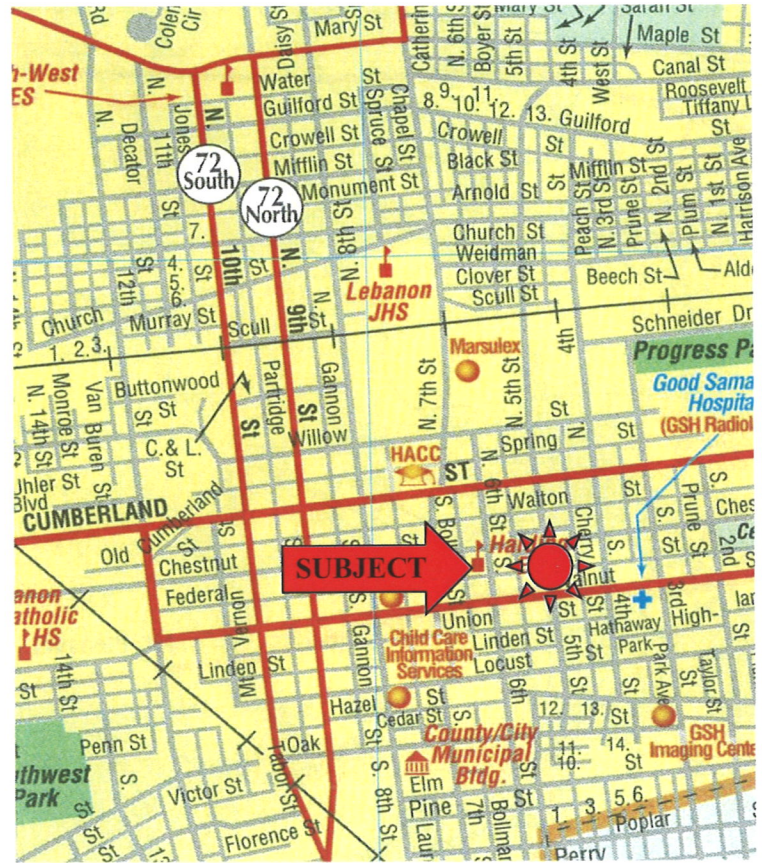
Mailing Address: P.O. Box 706, Lebanon, PA 17042



COUNTY MAP



LOCATION MAP



Lebanon County, Pennsylvania

Located in south central Pennsylvania, just twenty-five miles east of the state capital (Harrisburg), the Lebanon Valley offers easy access to most major markets. The City of Lebanon has a population of about 25,000. Lebanon County has over 133,000 with a labor force of 75,000.

Known as “**Pennsylvania Dutch Country**”, Lebanon County is noted for its beautiful pastoral landscape, manicured farmlands, and outstanding dairy and pork products, especially Lebanon Bologna. At the same time, it has a strong industrial heritage, with a history of manufacturing dating back to Colonial times.

Designated an “**URBAN AREA**” by the US Department of Commerce, Lebanon and its surrounding communities support a highly diversified group of manufacturers, transport companies, wholesale and retail merchandisers, financial institutions, and a variety of service businesses. Backing them are utilities offering up-to-the-minute services and technical support at lower-than-average rates.

The Lebanon Valley is also blessed with excellent hospitals and clinics, including the Milton S. Hershey Medical Center, one of America’s leading research and treatment facilities.

The Lebanon Valley offers an unparalleled quality of life. The region’s educational system includes public and parochial, primary and secondary schools, career technical center, excellent under-graduate and graduate studies at Lebanon Valley College, and a variety of nearby universities. In addition, the Valley offers an outstanding array of cultural and recreational resources.