

EXCLUSIVE LISTING!

1.1 +/- Acres Residential Land Listed for \$1,050,000
Oleta Avenue and Mcleod Drive Las Vegas, NV 89074



- APN 177-24-202-003
- Zoned Residential –RS20
- Minimum lot 20,000 SF
- Homes to the left of parcels are under development
- 2026 Property Taxes are \$1,340.58
- Ideally located in developing area south of the I-215 and near St. Rose Siena Hospital, schools, and busy commercial centers on Eastern Avenue

Demographics- 2026

3-Mile Radius

Population	190,315
Households	75,443
Owner Housing Units	45,070
Average Household Income	\$84,386



Mark Anthony Rua
Brokers

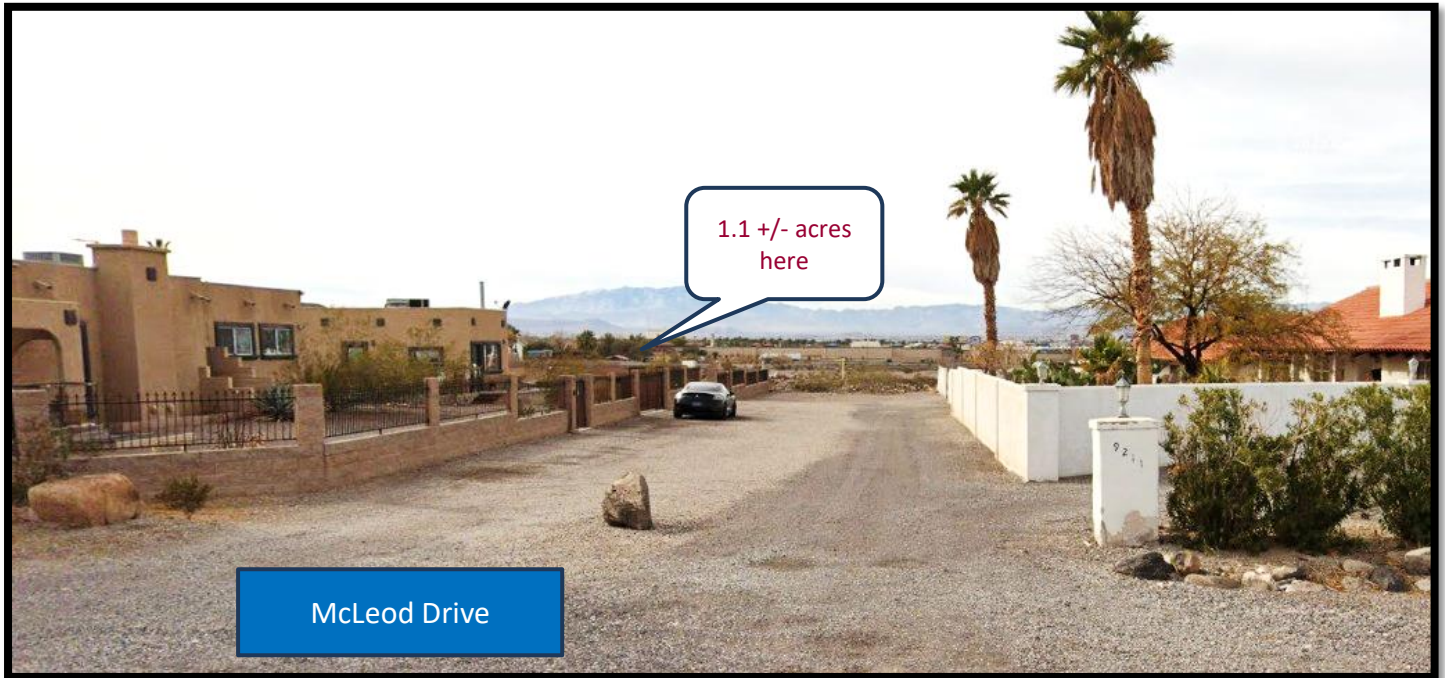
S.026655

Office: 702-992-7534
Cell: 702-595-6244

2855 St Rose Parkway, Suite 100, Henderson, NV 89052
markanthonyrua@gmail.com www.mrlandlasvegas.com



Oleta Avenue and McLeod Drive



Mark Anthony Rua
Brokers

2855 St Rose Parkway, Suite 100, Henderson, NV 89052
markanthonyruea@gmail.com www.mrlandlasvegas.com

Office: 702-992-7534
Cell: 702-595-6244



ASSESSOR'S PARCELS - CLARK COUNTY, NV.
 Briana Johnson - Assessor

177-24-2

S 2 NW 4

24

T22S R61E

163 162 161 16
 176 177 178 17
 192 191 190 18

Scale: 1" = 200'

Rev: 1/8/2019

CLARK COUNTY

MAP LEGEND

NOTES

This map is for assessment use only and does NOT represent a survey. No liability is assumed for the accuracy of the data delineated herein. Information on roads and other non-assessed parcels may be obtained from the Road Document Listing in the Assessor's Office.

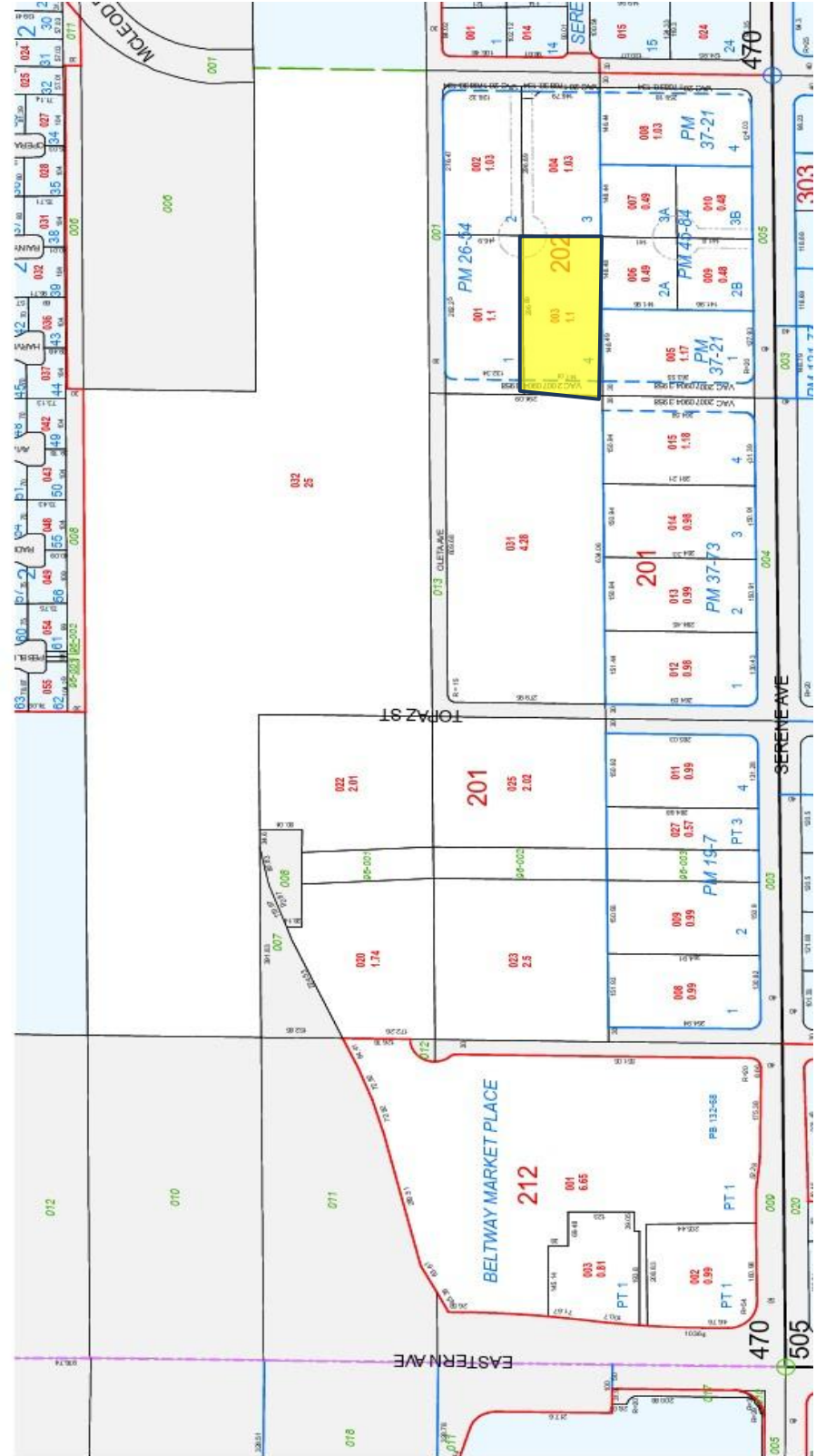
This map is compiled from official records, including surveys and deeds, but only contains the information required for assessment. See the recorded documents for more detailed legal information.

USE THIS SCALE FIRST WHEN MAP REDUCED FROM 11X17 ORIGINAL

MAP LEGEND

PARCEL BOUNDARY
 SUB BOUNDARY
 PLIND BOUNDARY
 ROAD EXHIBIT
 METRIC/LENDER LINE
 HISTORIC LOT LINE
 HISTORIC PLIND BOUNDARY

CONDOMINIUM UNIT
 AIR SPACE PCL
 RIGHT OF WAY PCL
 SUB-SURFACE PCL
 202 PARCEL SUB-SEG NUMBER
 PB 24-SE PLAT RECORDING NUMBER
 5 BLOCK NUMBER
 5 LOT NUMBER
 SLS GOV. LOT NUMBER



Oleta Avenue and McLeod Drive



Mark Anthony Rua
Brokers

2855 St Rose Parkway, Suite 100, Henderson, NV 89052
markanthonyrua@gmail.com www.mrlandlasvegas.com

Office: 702-992-7534
 Cell: 702-595-6244



The information contained herein is subject to verification and no liability for errors or omissions is assumed. The price, data, and other information are subject to change or the listing may be withdrawn without notice.