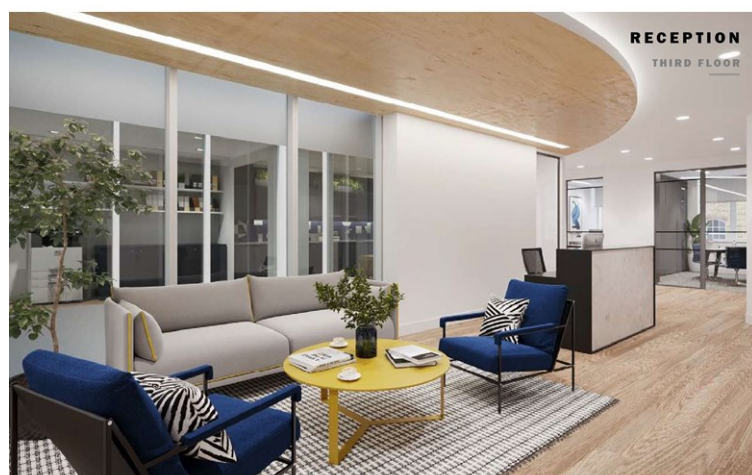
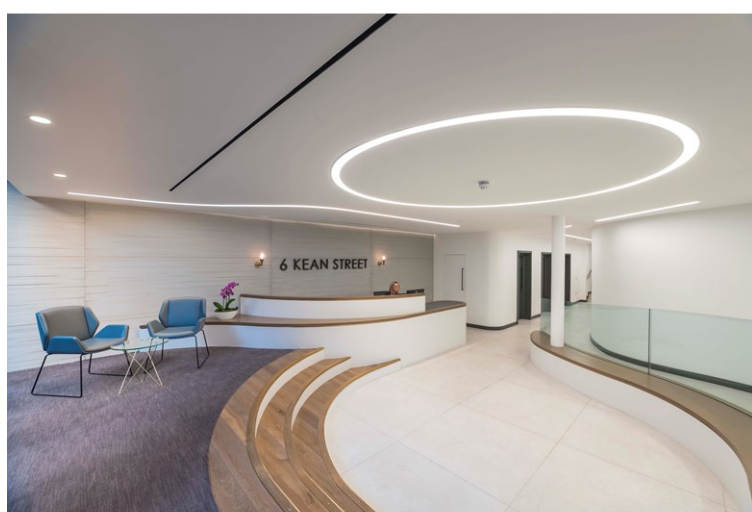


6 KEAN STREET, LONDON WC2B 4AS

Farebrother

OFFICE TO RENT | 2,180 - 8,126 SQ FT | £72.50 PSF



THE REAL ESTATE SPECIALISTS

farebrother.com



FAREBROTHER

5 Chancery Lane,
London EC4A 1BL

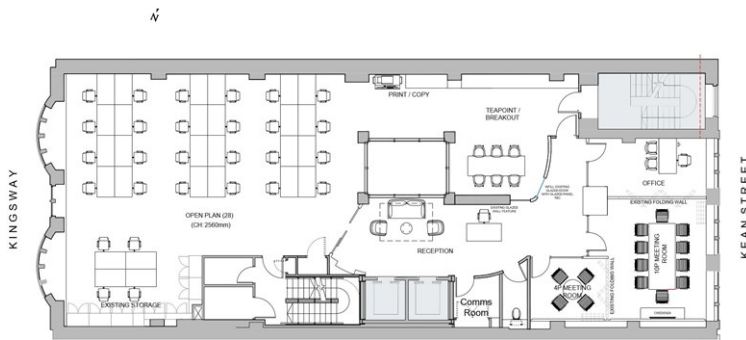
T +44 20 7405 4545

6 KEAN STREET, LONDON WC2B 4AS

Farebrother

BESPOKE FITTED OFFICE ACCOMODATION TO LET

2,180 - 8,126 SQ FT | £72.50 PSF



DESCRIPTION

The building has recently been upgraded to provide a remodelled reception, new facade to ground and 1st floor and new on floor finishes.

The 3rd, 5th and 7th floors are undergone a comprehensive refurbishment to provide fully fitted space and will be available for occupation.

AVAILABILITY

FLOOR	SIZE (SQ FT)	AVAILABILITY
3rd	2,953	Available
5th	2,993	Available
7th	2,180	Available
TOTAL	8,126	

AMENITIES

- Fully fitted plug and play office accommodation
- Air conditioning
- Raised floor
- Bike Racks & Showers
- DDA Compliant
- 2 Passenger Lifts
- 24 Hour Access
- Commissionaire

TERMS

RENT	RATES	S/C
£72.50 psf	£27.80 psf	£10.79 psf

INFORMATION

A new lease is available direct from the landlord.

Viewings strictly through joint sole agents, Farebrother or Colliers

Available on request

[Website](#)

GET IN TOUCH

MATTHEW CAUSER	ALEX KNOTT	TOM TREGONING
Farebrother 020 7855 3530 mcauser@farebrother.com	Farebrother 020 7855 3564 aknott@farebrother.com	Colliers International 020 7487 1813 Tom.tregoning@colliers.com

SUBJECT TO CONTRACT. FAREBROTHER FOR THEMSELVES AND THE VENDOR OF THIS PROPERTY GIVE NOTICE THAT THESE PARTICULARS DO NOT FORM, OR FORM PART OF, ANY OFFER OR CONTRACT. THEY ARE INTENDED TO GIVE FAIR DESCRIPTION OF THE PROPERTY AND WHILST EVERY EFFORT HAS BEEN MADE TO ENSURE THEIR ACCURACY THIS CANNOT BE GUARANTEED. ANY INTENDING PURCHASER MUST THEREFORE SATISFY THEMSELVES BY INSPECTION OR OTHERWISE. NEITHER FAREBROTHER, NOR ANY OF ITS EMPLOYEES, HAS ANY AUTHORITY TO MAKE OR GIVE ANY FURTHER REPRESENTATIONS OR WARRANTY WHATSOEVER IN RELATION TO THIS PROPERTY. ALL PRICES AND RENTS QUOTED ARE NET OF VAT