

AVAILABLE AUGUST 1, 2026



8,998 SF FOR LEASE

PLAYFAIR 14 **SPOKANE, WA 99202**

Property Details

8,998 SF Warehouse
Office T.I. Available

- Concrete Tilt-Up Building
- 30' Clear Height
- 75' x 50' Column Spacing
- ESFR Sprinkler System
- LED Efficient Lighting
- Insulated Building
- Ample Parking



Additional Features

- **1 Minute** from Future North-South Freeway
- **6 Minutes** to Downtown Spokane
- **13 Minutes** to Spokane International Airport



PO Box 3949
Spokane, WA 99220
www.LBStoneProperties.com

509.343.9042

FOR LEASE | 8,998 SF WAREHOUSE

PLAYFAIR 14 | SPOKANE, WA 99202

ADDITIONAL DETAILS

PLAYFAIR 14
SPOKANE, WA 99202



Warehouse Lease Rates:

\$10,798/MO+NNN

Loading:

- 1 Dock High Door

Zoning:

- Heavy Industrial
- Located Within the CEZ Zone
Sales tax deferral may be available for
manufacturing construction

Power:

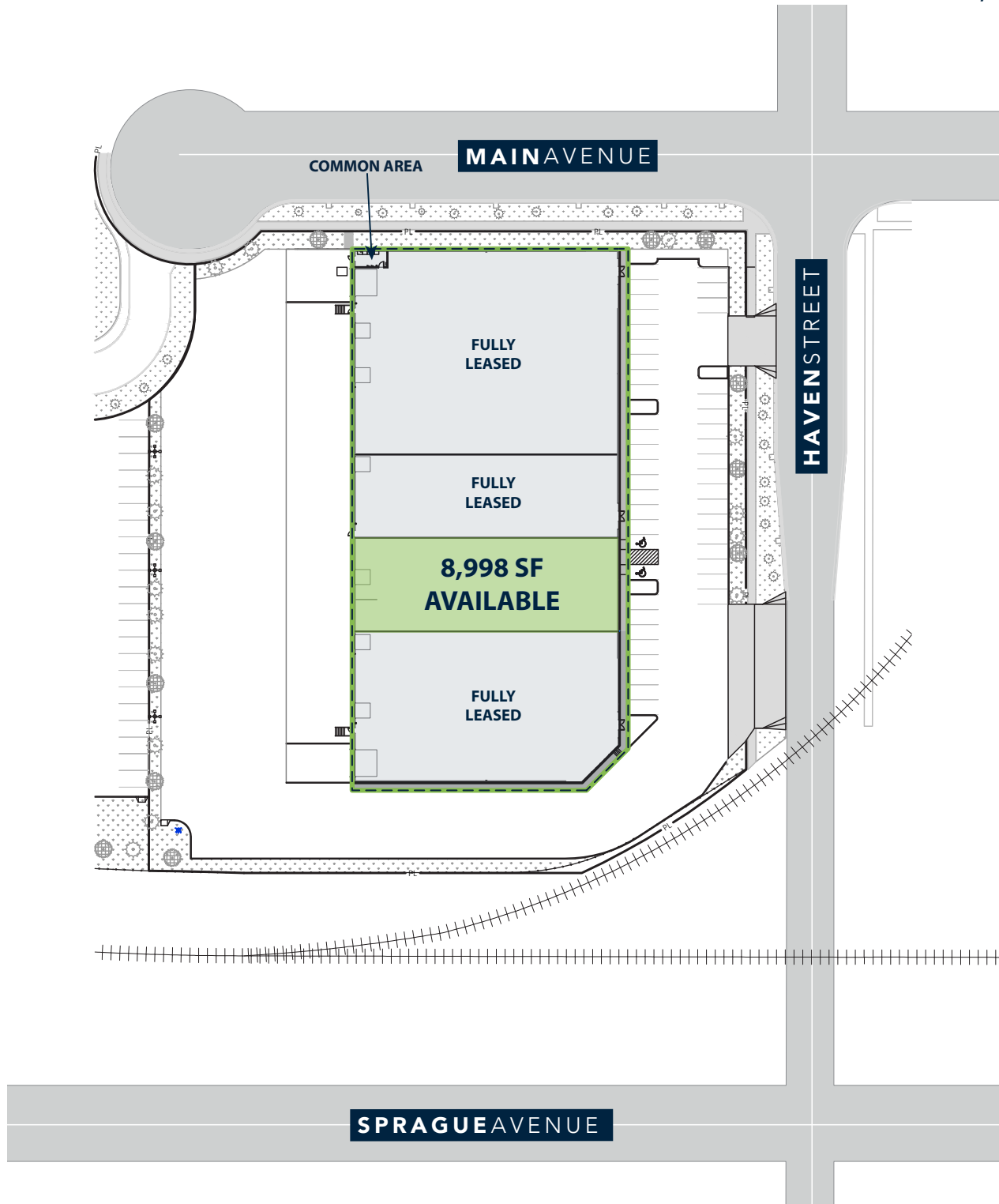
- 480V 3 Phase Power

FOR LEASE | 8,998 SF WAREHOUSE

PLAYFAIR 14 | SPOKANE, WA 99202

FLOORPLAN

PLAYFAIR 14
SPOKANE, WA 99202



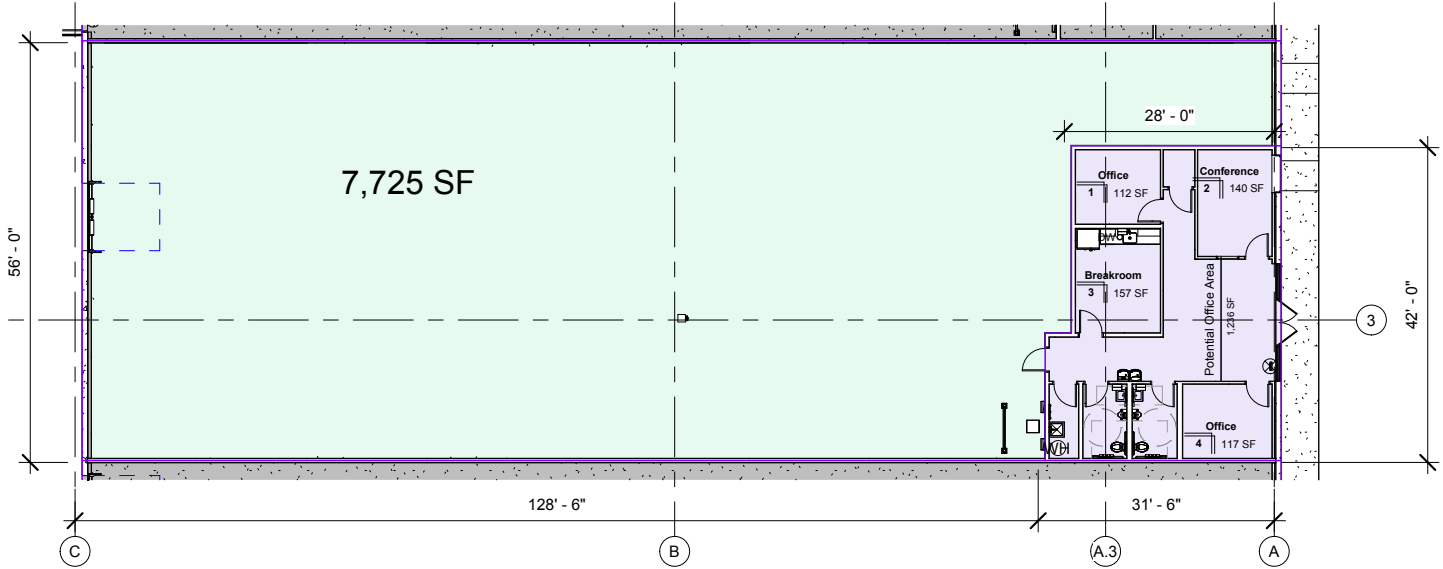
FOR LEASE | 8,998 SF WAREHOUSE

PLAYFAIR 14 | SPOKANE, WA 99202

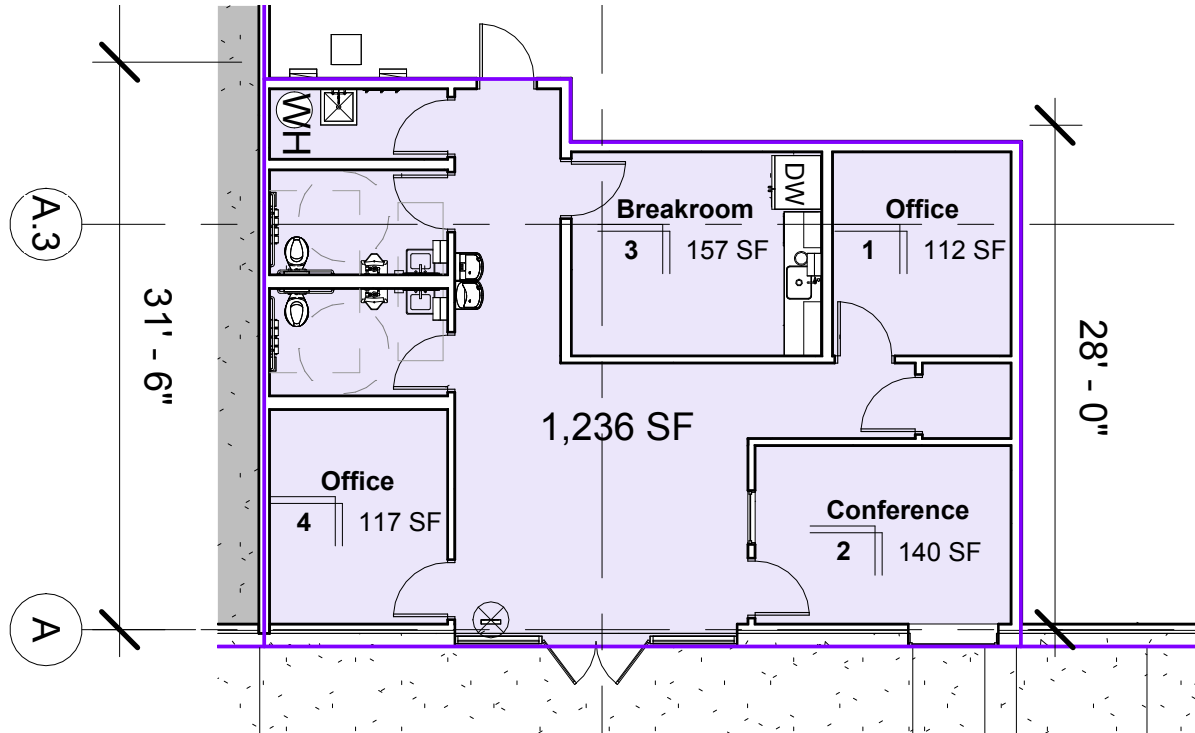
POTENTIAL OFFICE FLOORPLAN

PLAYFAIR 14
SPOKANE, WA 99202

Warehouse Area:



Potential Office Area:



FOR LEASE | 8,998 SF WAREHOUSE

PLAYFAIR 14 | SPOKANE, WA 99202

IMAGES

PLAYFAIR 14
SPOKANE, WA 99202



TYPICAL INTERIOR



COMMERCE PARK LANDSCAPING

FOR LEASE | 8,998 SF WAREHOUSE

PLAYFAIR 14 | SPOKANE, WA 99202

AERIAL VIEW

PLAYFAIR 14
SPOKANE, WA 99202



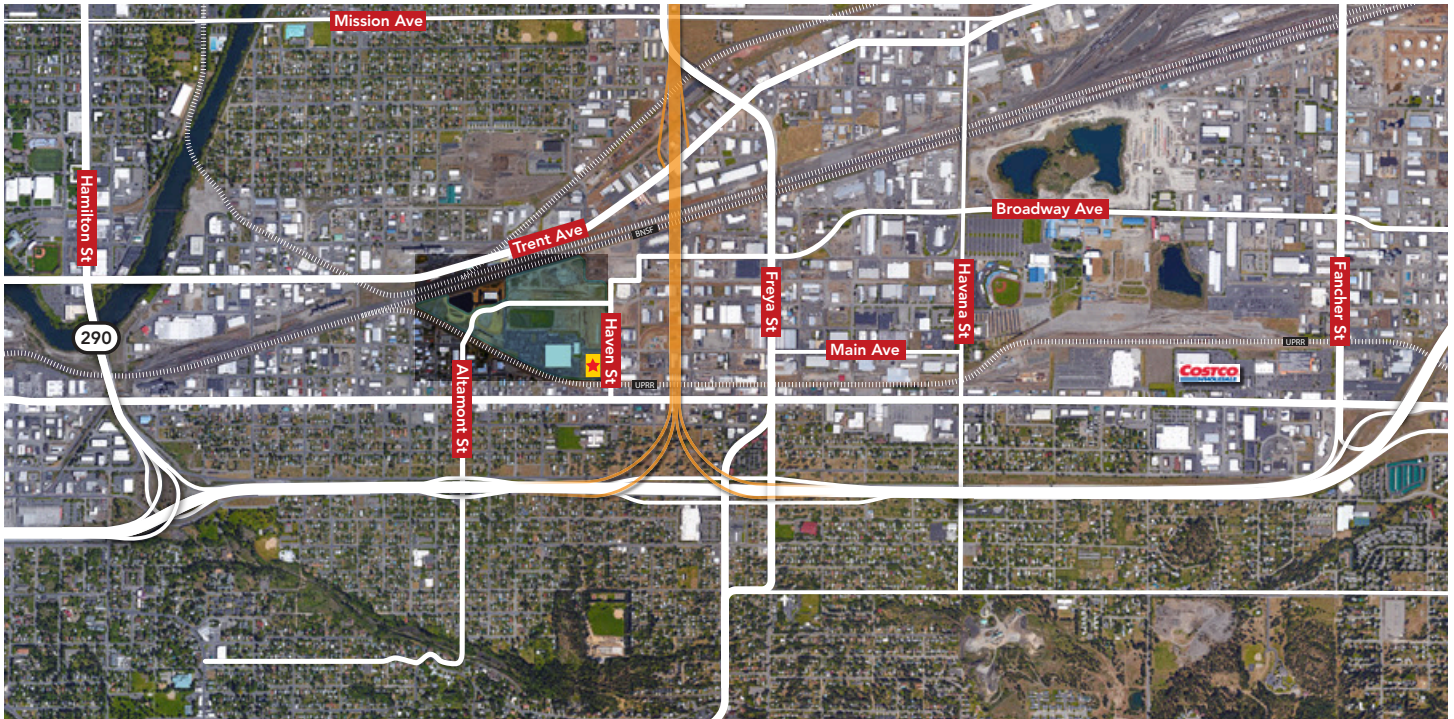
Total Available: 8,998 S.F.
Building Size: 51,000 S.F.
Land Area: 3.25 Acres

FOR LEASE | 8,998 SF WAREHOUSE

PLAYFAIR 14 | SPOKANE, WA 99202

AERIAL MAP

PLAYFAIR 14
SPOKANE, WA 99202



Future US 395 - North Spokane Corridor

THE BENEFITS OF PLAYFAIR DID YOU KNOW...

TOP 100 Metropolitan Statistical Area (MSA)
TOP 75 Combined Statistical Area (CSA)

NEW ROADS AND INFRASTRUCTURE

Streets are extra wide with street lights, sidewalks and landscaping on both sides.

POWER All parcels have 13,200 V power underground.

**Most Conveniently Located
Industrial / Business Park**

UTILITIES Extra large water, sewer, gas lines installed to all lots.

WEATHER Playfair is located at lower elevation than all other large parks in Spokane County, assuring the least snow and ice.

FERRY/ALTAMONT CONNECTION

New Ferry/Altamont connection to I-90 in the works.