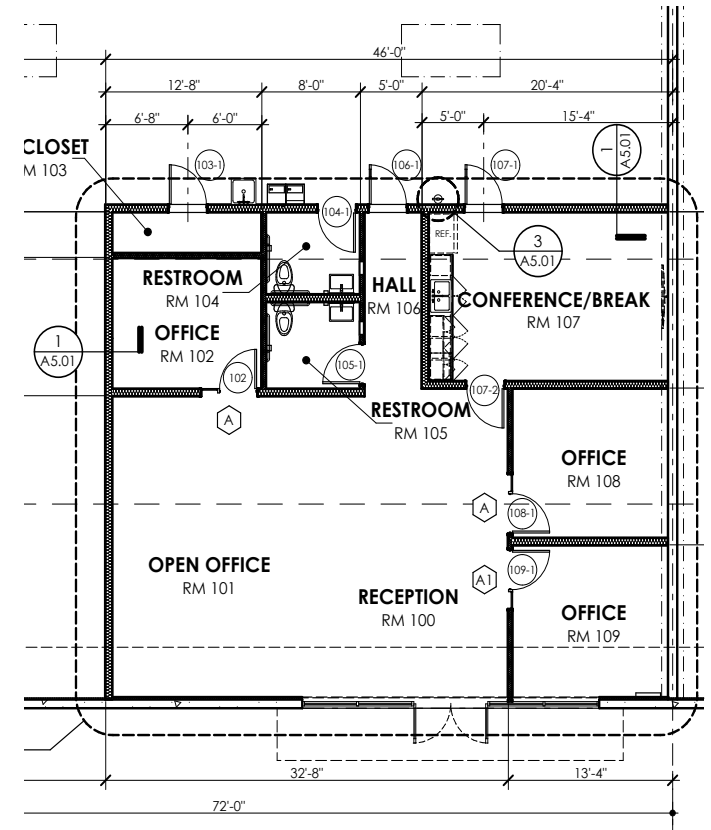
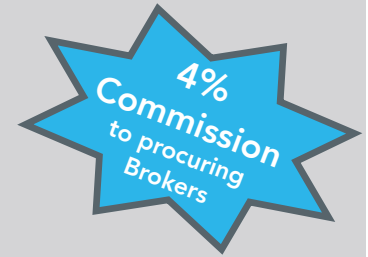




# Gowen Industrial Park - Building C

Class A, Concrete-Tilt Manufacturing/Distribution  
Gowen and Eisenman Interchange, Boise  
10k sf Available



## Building Details

- 24' clear height
- ESFR sprinklers
- Class A, concrete-tilt
- Modern design and construction
- Yard available
- 10,368 sf
- Ample 480V power available
- 2 dock doors, 1 grade-level door

**Occupancy:**  
October 1, 2018

**NNN Rental Rate:**  
\$6,600/month  
NNN  
Turnkey