

Florham Village Shopping Center

RIPCO
RETAIL LEASING

187 Columbia Turnpike
Florham Park, NJ

For Lease

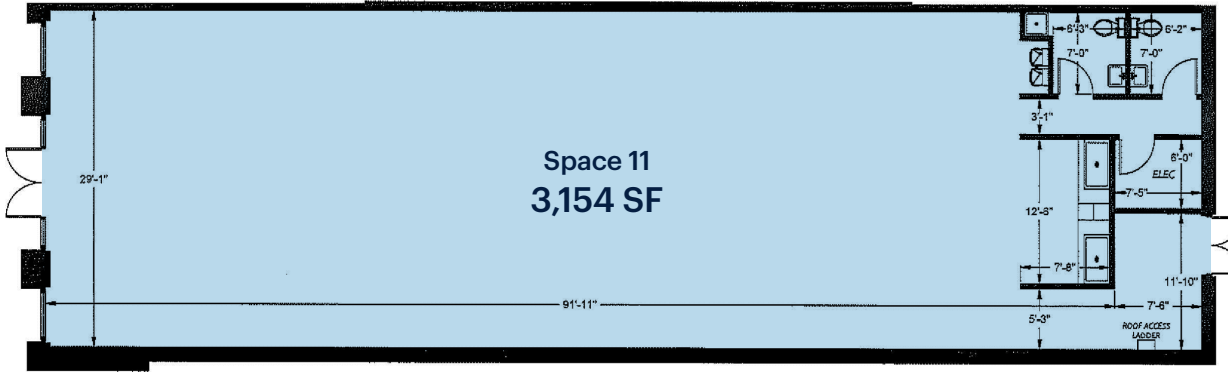


3,154 - 8,300 SF Available

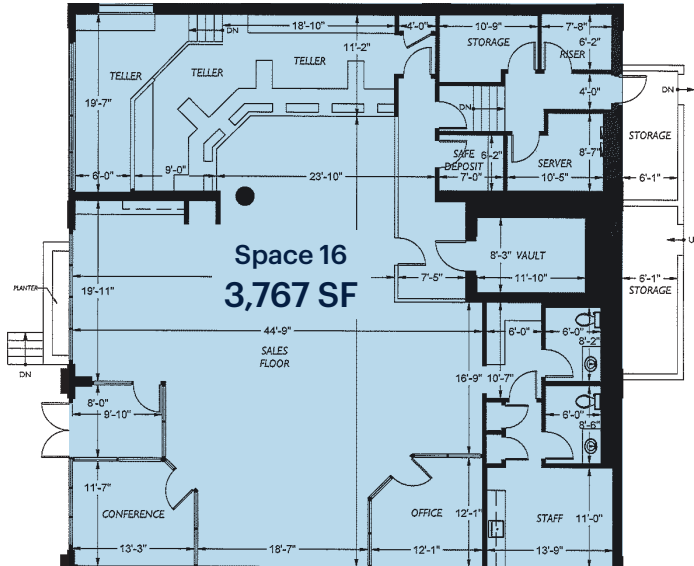
Prime Retail Spaces

Space Details

Space 11 | 3,154 SF



Space 16 | 3,767 SF



Size	Ground Floor	
	Space 11	3,154 SF
	Space 16	3,767 SF
	Lower Level	
	Space 1	5,630 SF
	Gym Space	8,300 SF
	Total	20,851 SF

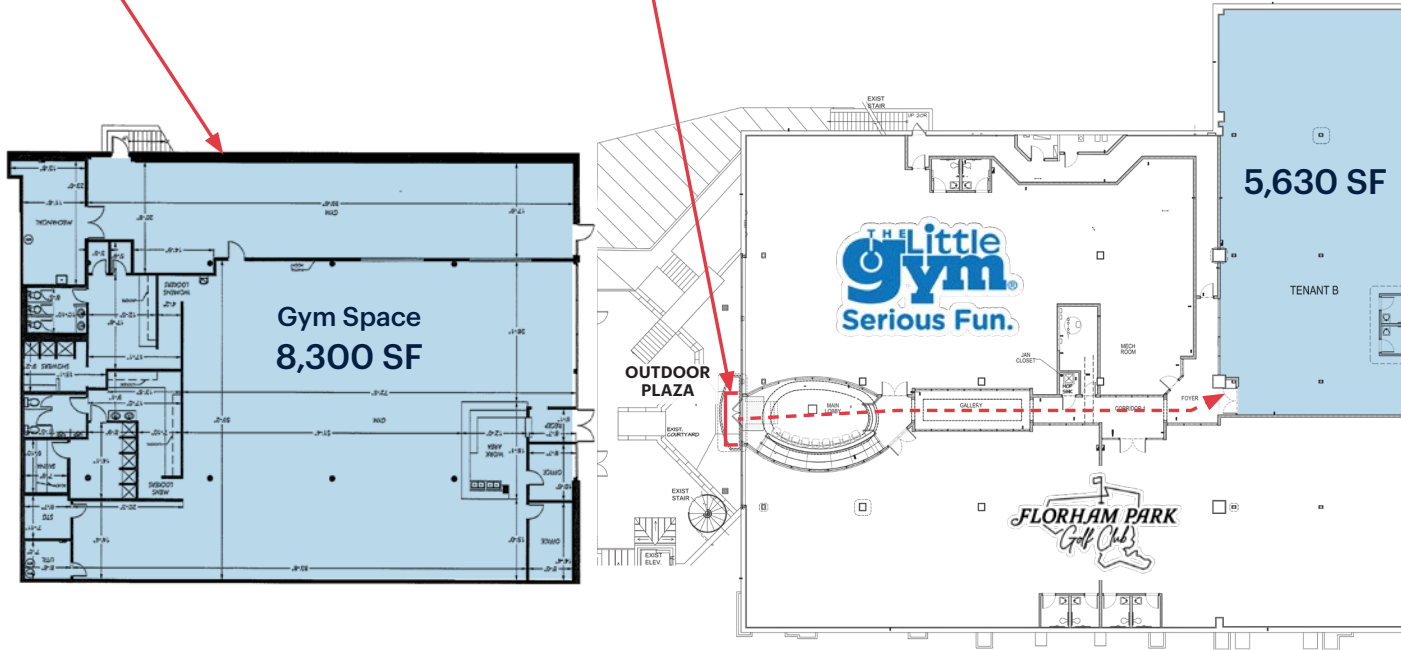
GLA	56,600 SF
Possession	Immediate
Rent	Upon request

Co-Tenants	CVS, Panera, JETSET Pilates, The Little Gym, The Now Massage, USPS, European Wax Center, Florham Pizza, Blooming Nail Salon, Relive Health, Hangry Joe's Hot Chicken, Florham Park Cleaners, Ivy Rehab, Miracle Ear, The Milkshake Factory, Woof Gang Bakery & Grooming
-------------------	---

Neighbors	Trader Joe's, Kings Supermarket, Starbucks, and Pastosas
------------------	--

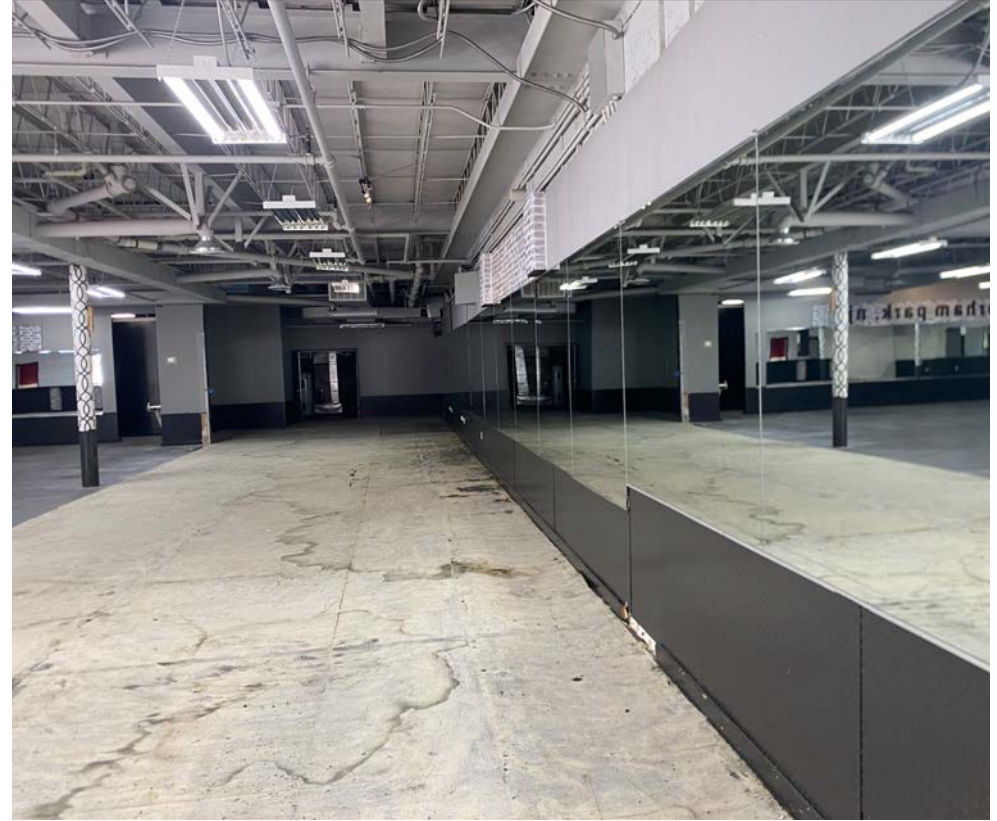
Comments	<p>Prime location at lighted intersection with high visibility and heavy daytime traffic</p> <p>High-end demographics</p> <p>Renovated center with ample parking - 350 spaces</p> <p>Zoned retail/commercial</p> <p>Property sits in the heart of the Florham Park Business Center</p> <p>Minutes from Route 24, I-287, Route 10, I-80, and I-280</p>
-----------------	---

Lower Level Courtyard Layout



Lower Level Gym

8,300 SF Available



Market Retail

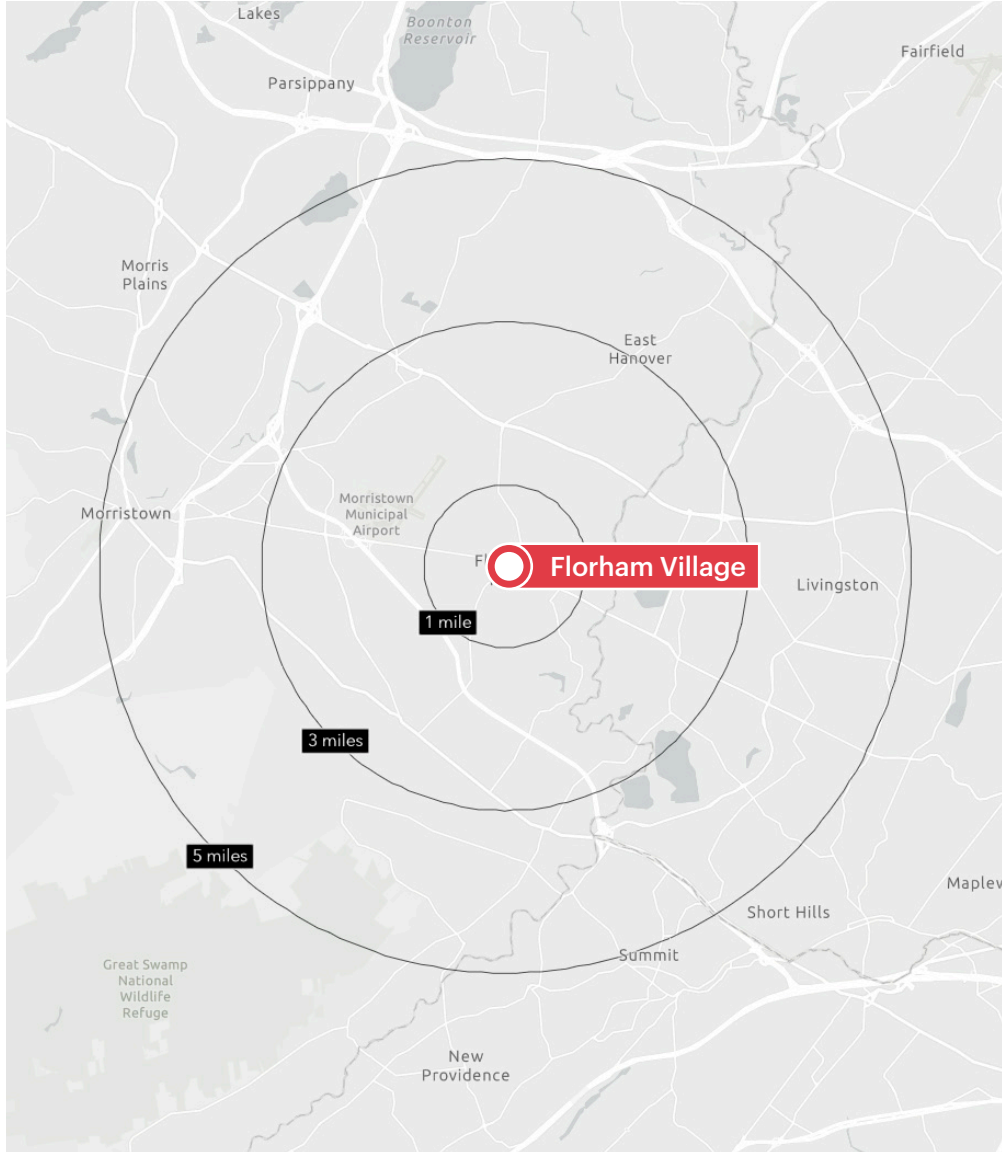


Surrounding Office Population



Area Demographics

2025 ESRI Summary Report



187 Columbia Turnpike

	1 mile	3 miles	5 miles
Total Population	5,859	50,993	156,336
Total Households	2,349	18,370	57,809
Average Household Income	\$232,371	\$238,651	\$255,418
Median Household Income	\$166,143	\$173,669	\$179,302
% Population with Bachelors +	2,794	23,962	75,717
Daytime Population	520	3,216	9,260
Total Daytime Employees	9,183	59,675	157,842
Total Businesses	12,329	85,139	243,885

Additional Center Photos



Contact Exclusive Agents

Florian Suserman
fsuserman@ripconj.com | 201.777.2301

Samantha Zawadzki
szawadzki@ripconj.com | 201.256.0542

RIPCO
RETAIL LEASING

611 River Drive, 3rd Floor, Elmwood Park, NJ 07407 | 201.777.2300 | ripconj.com
Information is from sources deemed reliable; however, accuracy is not guaranteed. Square footage is approximate; Buyer must independently verify and assumes risk for inaccuracies.