

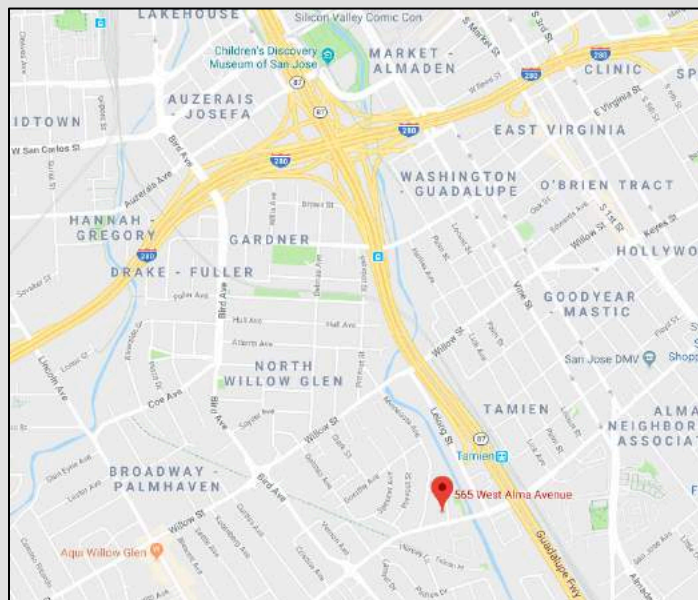
For Lease

565 W ALMA AVENUE



PROPERTY HIGHLIGHTS

- 3 Spaces Available:
- 1,056 sq ft (Former Coffee Shop)
- 848 sq ft
- 2080 sq ft (Former Cleaners)
- Close to Willow Glen Downtown
- Right off the freeway (87) and (280)
- Plenty of Parking
- Perfect for phone Store, Coffee Shop, profession Businesses
- Center is being completely remodeled



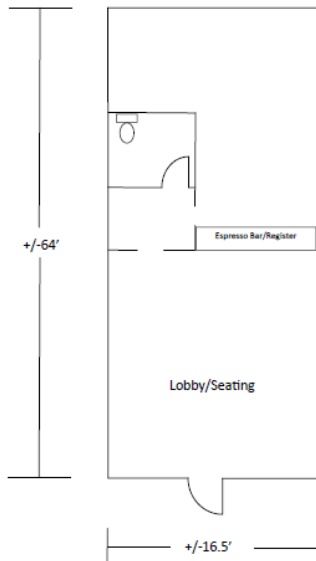
SILVERSTONE COMMERCIAL

For Lease

565 W ALMA AVENUE

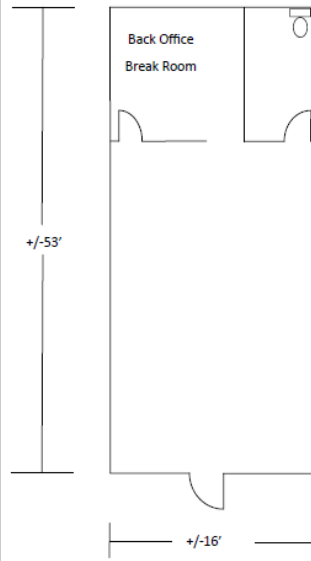


569 W Alma Ave, San Jose
+/-1,056 SF



Drawing Not to Scale - All Sizes Approximate

573 W Alma Ave, San Jose
+/-848 SF



Drawing Not to Scale - All Sizes Approximate

569 W Alma Avenue (1,056 sf)

Former Coffee Shop.

573 W Alma Avenue (848 sf)

Ready for a professional business.

581 W Alma Avenue (2,080 sf)

Former Cleaners. Can be divisible to
1,000 sq ft.

SILVERSTONE COMMERCIAL

DAVID SILBERSTEIN David@SilverStoneCommercial.com 408-781-4954 BRE# 01880860

The information contained herein has been obtained from sources we deem reliable. We cannot, however, assume responsibility for its accuracy