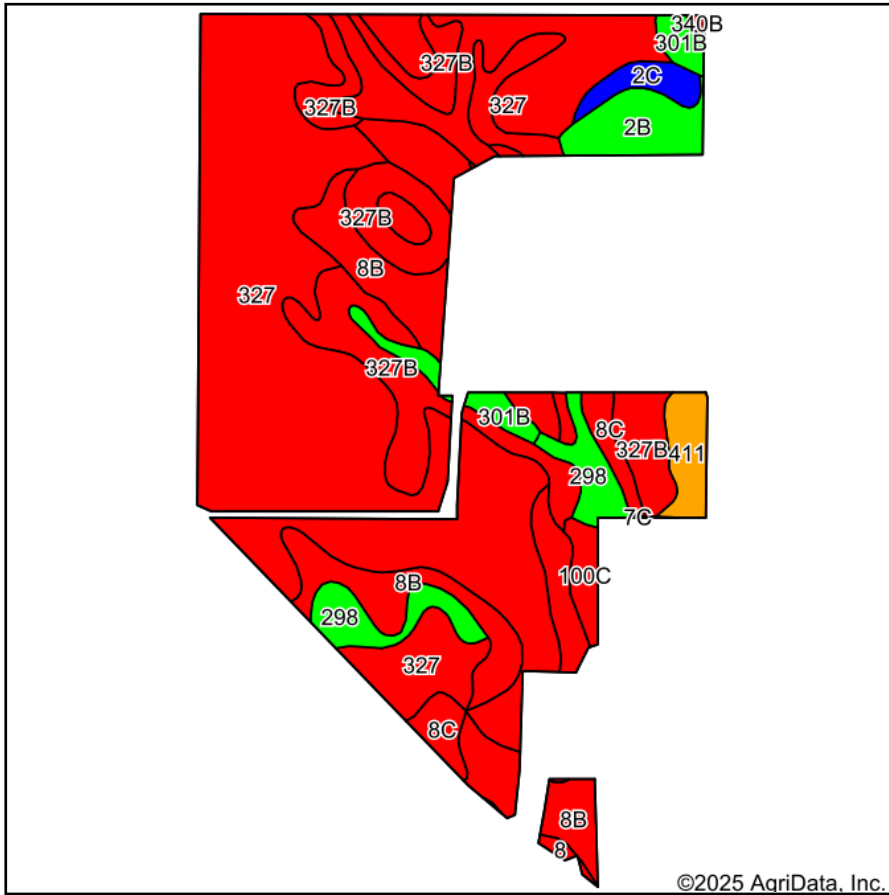
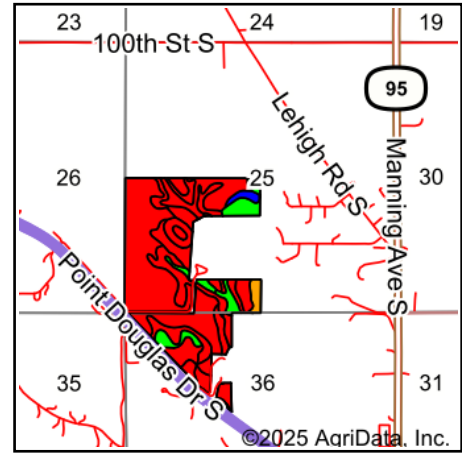


Soils Map



Soils data provided by USDA and NRCS.



State: **Minnesota**
 County: **Washington**
 Location: **25-27N-21W**
 Township: **Cottage Grove**
 Acres: **160.3**
 Date: **7/15/2025**

LANDPROZ.COM



Area Symbol: MN163, Soil Area Version: 20

Code	Soil Description	Acres	Percent of field	PI Legend	Non-Irr Class *c	Irr Class *c	Productivity Index	*n NCCPI Overall		
327	Dickman sandy loam, 0 to 2 percent slopes	85.09	53.1%			III _s	49	52		
327B	Dickman sandy loam, 2 to 6 percent slopes	24.65	15.4%			III _e	49	52		
8B	Sparta loamy sand, 2 to 6 percent slopes	20.53	12.8%			IV _s	I _e	39	52	
298	Richwood silt loam, 0 to 2 percent slopes	6.35	4.0%			I	99	84		
2B	Ostrander silt loam, 2 to 6 percent slopes	4.74	3.0%			I _e	98	80		
100B	Copaston loam, 0 to 6 percent slopes	4.00	2.5%			III _e	31	48		
8C	Sparta loamy sand, 6 to 15 percent slopes	3.91	2.4%			VI _s	35	51		
301B	Lindstrom silt loam, glaciated, 2 to 4 percent slopes	3.51	2.2%			I _e	99	78		
411	Waukegan silt loam, 0 to 2 percent slopes	2.98	1.9%			II _s	75	65		
2C	Ostrander silt loam, 6 to 12 percent slopes	2.16	1.3%			III _e	90	81		
100C	Copaston loam, 6 to 12 percent slopes	1.84	1.1%			VI _s	27	47		
8	Sparta loamy sand, 0 to 2 percent slopes	0.39	0.2%			IV _s	I _e	39	52	
340B	Whalan silt loam, 1 to 6 percent slopes	0.15	0.1%			I _e	49	55		
Weighted Average							3.09	*.	52.2	*n 55.1

*n: The aggregation method is "Weighted Average using all components"

*c: Using Capabilities Class Dominant Condition Aggregation Method

*- Irr Class weighted average cannot be calculated on the current soils data due to missing data.