



**RENT**  
**£60.00**  
(per sq ft pa excl)



**SERVICE CHARGE**  
**£14.75**  
(per sq ft excl)



**RATES PAYABLE**  
**£19.49**  
(per sq ft pa (ye April 2026))



**EPC RATING**  
**B**



**20 Ironmonger Lane**  
**London, EC2V 8EP**

Fully Fitted Offices | 1,022 - 2,920 sq ft | 95 - 271.3 sq m



**TO LET**

## Location

Ironmonger Lane is a particularly tranquil street that lies between Cheapside and Gresham Street, located in the heart of the City of London very close to The Bank of England. Bank Underground Station (Central, Northern, DLR, Waterloo & City and the Circle and District Lines) is less than 300 metres away. Other stations including St Paul's, Cannon Street, Moorgate and Liverpool Street (including the Elizabeth Line) are also close by. Cheapside is one of the City's principle retailing destinations offering a diverse range of retail, restaurants and cafes.

## Description

The available second floor and part fourth floor have been newly refurbished by the landlord to a high standard, offering fully fitted and furnished offices ready for immediate occupancy. Fully managed services are also available through Workpad.

## Accommodation

The approximate Net Internal Areas comprise:

Floor	Sq Ft	Sq M
Part Fourth - CAT A+	1,022	95
Second - Plug & Play	1,898	176.3

## Amenities



Bike Storage



Shower Facilities



New Reception



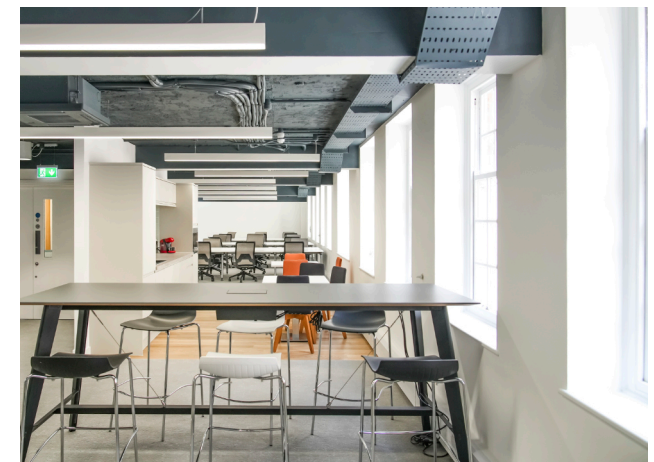
Comfort Cooling



Passenger Lift



Excellent Transport Links



→ **Further information**

**Lease Terms**

New flexible leases available direct from the Landlord. Or available on flexible all-inclusive managed terms through Workpad.

**Quoting Rent**

£60.00 per sq ft pa excl.

**Business Rates**

Estimated at £19.49 per sq ft pa for the rating year April 2025 to April 2026. All parties are advised to make their own enquiries with the rating authority.

**Legal Costs**

Each party to be responsible for their own legal costs incurred in this transaction.

**Service Charge**

The current on account service charge is £14.75 psf excl.

**EPC**

The EPC rating is B

**VAT**

The property is elected to VAT which is therefore payable on rent and service charge.

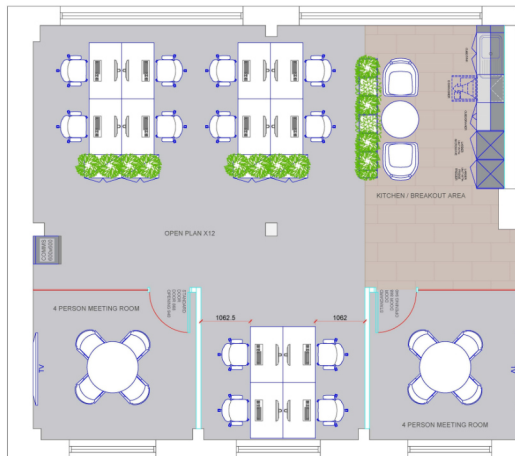
**Viewings**

Strictly by prior arrangement through joint sole agents Fisher German LLP and Allsop LLP.



**Part Fourth Floor - CAT A +**

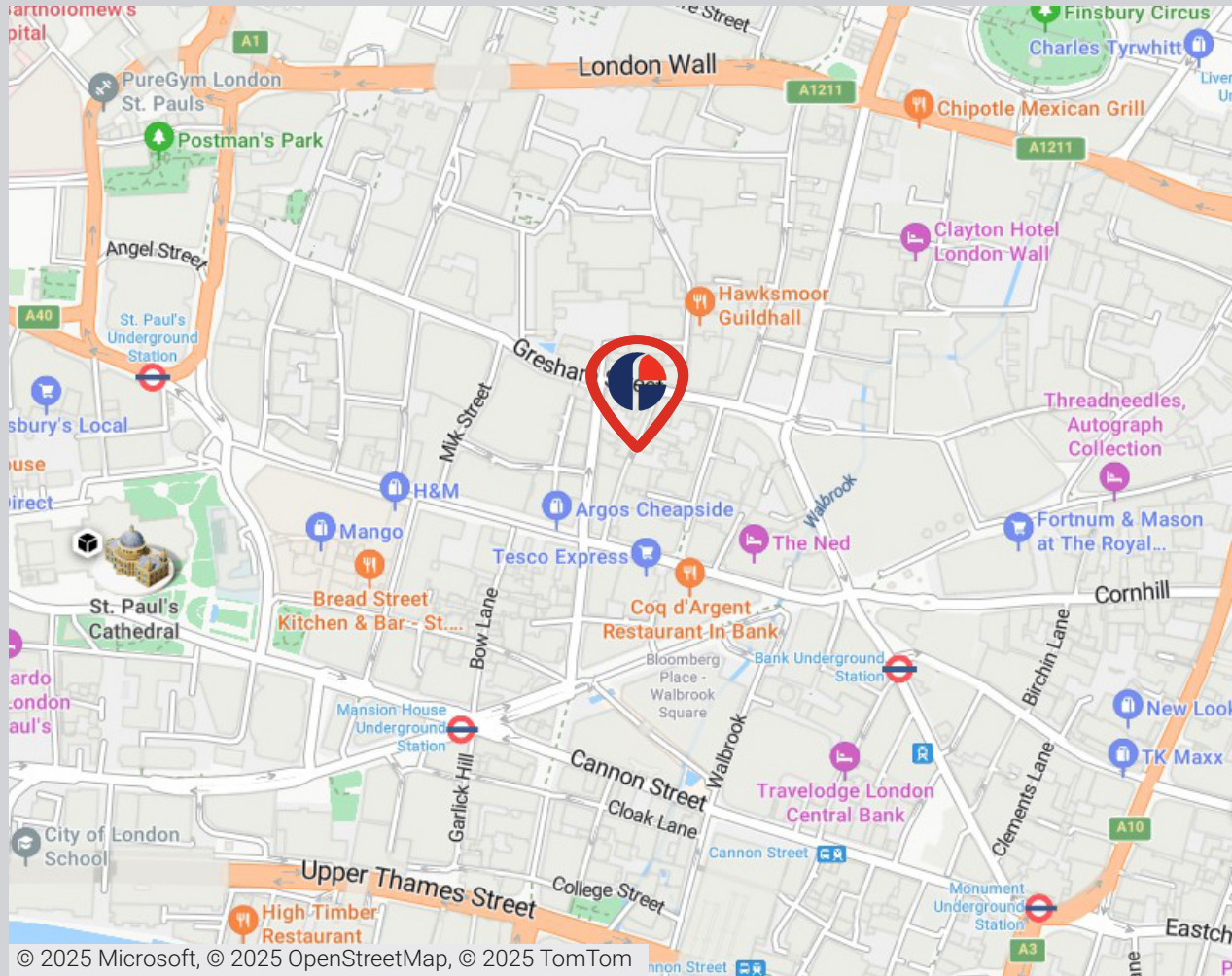
- **SPACEPLAN OCCUPANCY**
- X16 DESKS (1200 X 700)
- X1 4 PERSON MEETING ROOM
- X1 SOFT SEATING AREA
- X1 TEA POINT



- SPACEPLAN OCCUPANCY**
- 20 DESKS (1400'S)
  - X10 PERSON MEETING ROOM
  - X1 KITCHEN BREAKOUT
  - X2 PHONE BOOTHS
  - X1 WC
  - X1 BANQUETTE SEATING

**Second Floor - Plug & Play**

# 20 Ironmonger Lane, London EC2V 8EP



## Approximate Travel Distances



### Nearest Station

- Bank Underground Station - 0.1 miles (3 min walk)
- Cannon Street Station - 0.3 miles (7 min walk)
- St Pauls Underground Station - 0.3 miles (7 min walk)
- Moorgate Station - 0.3 miles (7 min walk)
- Liverpool Street Station - 0.6 miles (14 min walk)



## Contact



**Doug Gordon**  
0207 747 3117  
07884 408 136  
[doug.gordon@fishergerman.co.uk](mailto:doug.gordon@fishergerman.co.uk)



**Jessie High**  
0207 747 3142  
07467 727 210  
[jessie.high@fishergerman.co.uk](mailto:jessie.high@fishergerman.co.uk)

**Joint Agent Allsop LLP**  
07917 918 124

[fishergerman.co.uk](http://fishergerman.co.uk)



**Please Note:** Fisher German LLP and its Joint Agents give notice that: 1. They have no authority to make or give any representation or warranty on any property whether on their own behalf or on behalf of their clients or otherwise. 2. They do not owe any duty of care to you and assume no responsibility for any statements, representations, warranties or otherwise made in the particulars and you should not rely on those in the particulars. 3. The particulars are produced in good faith are set out as a general guide only and do not constitute or form an offer or a contract or part thereof. 4. Any photographs, descriptions, plans, measurements, distances and any other details in the particulars are approximate estimates only taken as the property appeared at the time and should not be relied upon as factually accurate. 5. Fisher German assumes prospective purchasers/tenants have carried out inspections to satisfy themselves that the information in the particulars is correct.

Particulars dated May 2025. Photographs dated various.