

# 7434 Perkins Road Baton Rouge, LA 70808

Perkins/Essex Corridor  
Multi-Tenant Office Property  
For Lease



## Property Features

- 4,500-20,000 SF
- \$15.75 PSF
- Substantial TI Allowance Available

**NAI**Latter & Blum

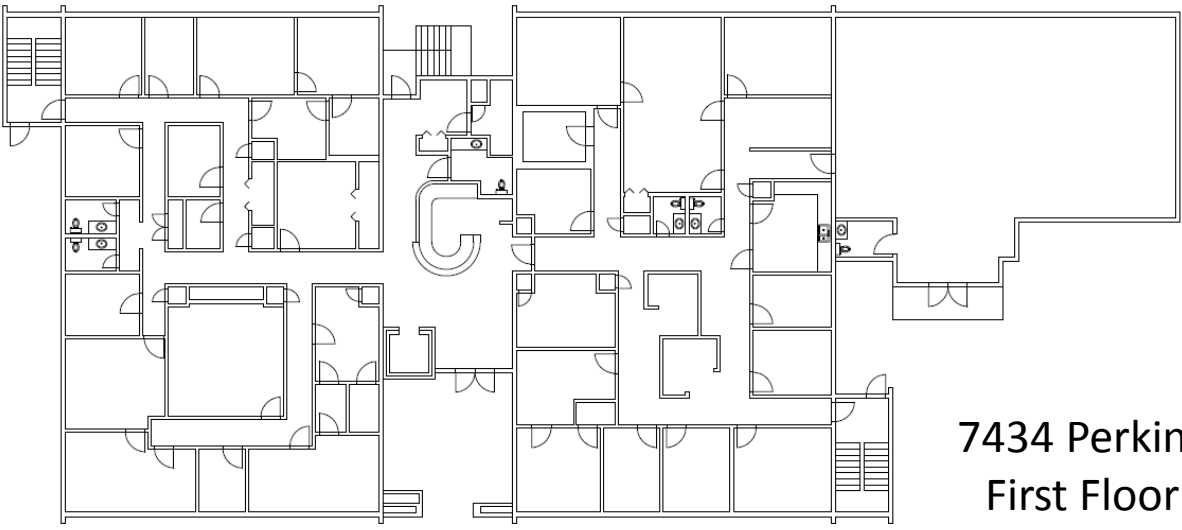
**Ty Gose**  
225.295.0800  
ty@latterblum.com

LICENSED IN LOUISIANA. NO WARRANTY OR REPRESENTATION, EXPRESS OR IMPLIED, IS MADE AS TO THE ACCURACY OF THE INFORMATION CONTAINED HEREIN, AND THE SAME IS SUBMITTED SUBJECT TO ERRORS, OMISSIONS, CHANGE OF PRICE, RENTAL OR OTHER CONDITIONS, PRIOR SALE, LEASE OR FINANCING, OR WITHDRAWAL WITHOUT NOTICE, AND OF ANY SPECIAL LISTING CONDITIONS IMPOSED BY OUR PRINCIPALS NO WARRANTIES OR REPRESENTATIONS ARE MADE AS TO THE CONDITION OF THE PROPERTY OR ANY HAZARDS CONTAINED THEREIN ARE ANY TO BE IMPLIED. CREATED 5/12/2014

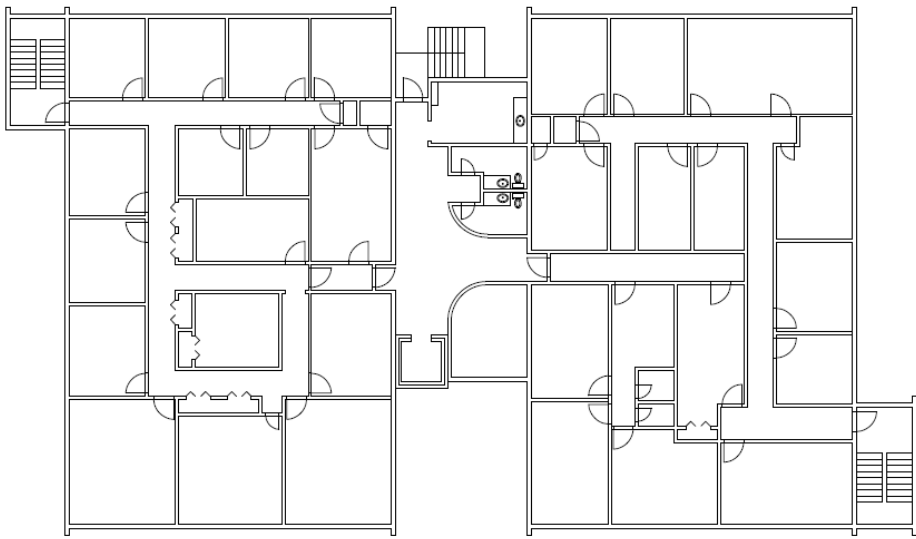
10455 Jefferson Highway, Suite 200  
Baton Rouge, LA 70809 USA  
225.295.0800  
[www.latterblum.com](http://www.latterblum.com)

# 7434 Perkins Road Baton Rouge, LA 70808

Perkins/Essex Corridor  
Multi-Tenant Office Property  
For Lease



7434 Perkins  
First Floor



7434 Perkins  
Second Floor



**Ty Gose**  
225.295.0800  
ty@latterblum.com

LICENSED IN LOUISIANA. NO WARRANTY OR REPRESENTATION, EXPRESS OR IMPLIED, IS MADE AS TO THE ACCURACY OF THE INFORMATION CONTAINED HEREIN, AND THE SAME IS SUBMITTED SUBJECT TO ERRORS, OMISSIONS, CHANGE OF PRICE, RENTAL OR OTHER CONDITIONS, PRIOR SALE, LEASE OR FINANCING, OR WITHDRAWAL WITHOUT NOTICE, AND OF ANY SPECIAL LISTING CONDITIONS IMPOSED BY OUR PRINCIPALS NO WARRANTIES OR REPRESENTATIONS ARE MADE AS TO THE CONDITION OF THE PROPERTY OR ANY HAZARDS CONTAINED THEREIN ARE ANY TO BE IMPLIED. CREATED 5/12/2014

10455 Jefferson Highway, Suite 200  
Baton Rouge, LA 70809 USA  
225.295.0800  
[www.latterblum.com](http://www.latterblum.com)