

INDUSTRIAL SPACE FOR LEASE

1942 E. COMMERCIAL ST.

MERIDIAN, IDAHO 83702



PROPERTY INFORMATION:

Submarket:	Meridian	Power:	3 Phase/240 - 400 Amp
Available:	Immediately	Zoning:	M-1D
Bldg Type:	Masonry/Metal	Parking:	Ample
Bldg Size:	40,000 SF	Lease Term:	3 - 5 Yrs
Clear Height:	20' - 22'	Lease Type:	NNN
Dock:	2 - 8x10		
Grade Level:	1 - 12x16		
	1 - 16x10		

AVAILABLE SPACE:

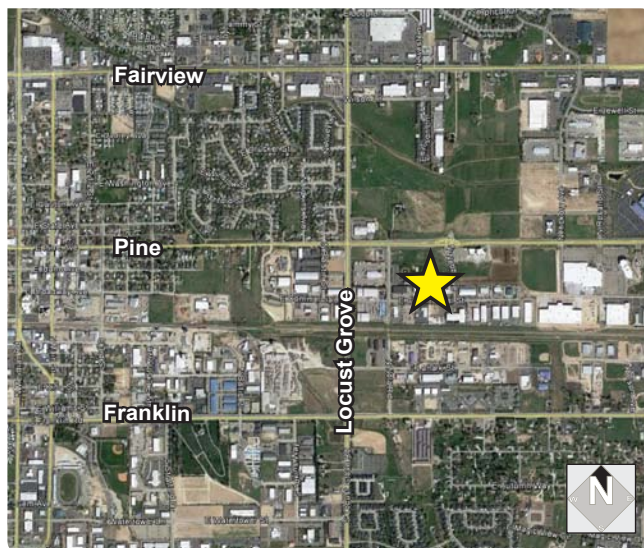
	RSF:	RATE/SF:	MONTHLY:
Office	1,800 SF		
Whse	18,200 SF		
Total	20,000 SF	\$0.49/SF	\$9,800.00 + NNN

CONTACT:

Chris Pearson, SIOR
 Ph: 208.947.0859
 chris@tokcommercial.com



Devin Pierce, SIOR
 Ph: 208.947.0850
 devin@tokcommercial.com



LISTING COMMENTS:

- Showroom / office / warehouse configuration.
- Between Eagle Road and Meridian Road exits.
- Great central Meridian location.
- Mezzanine storage included.
- Available Now.**

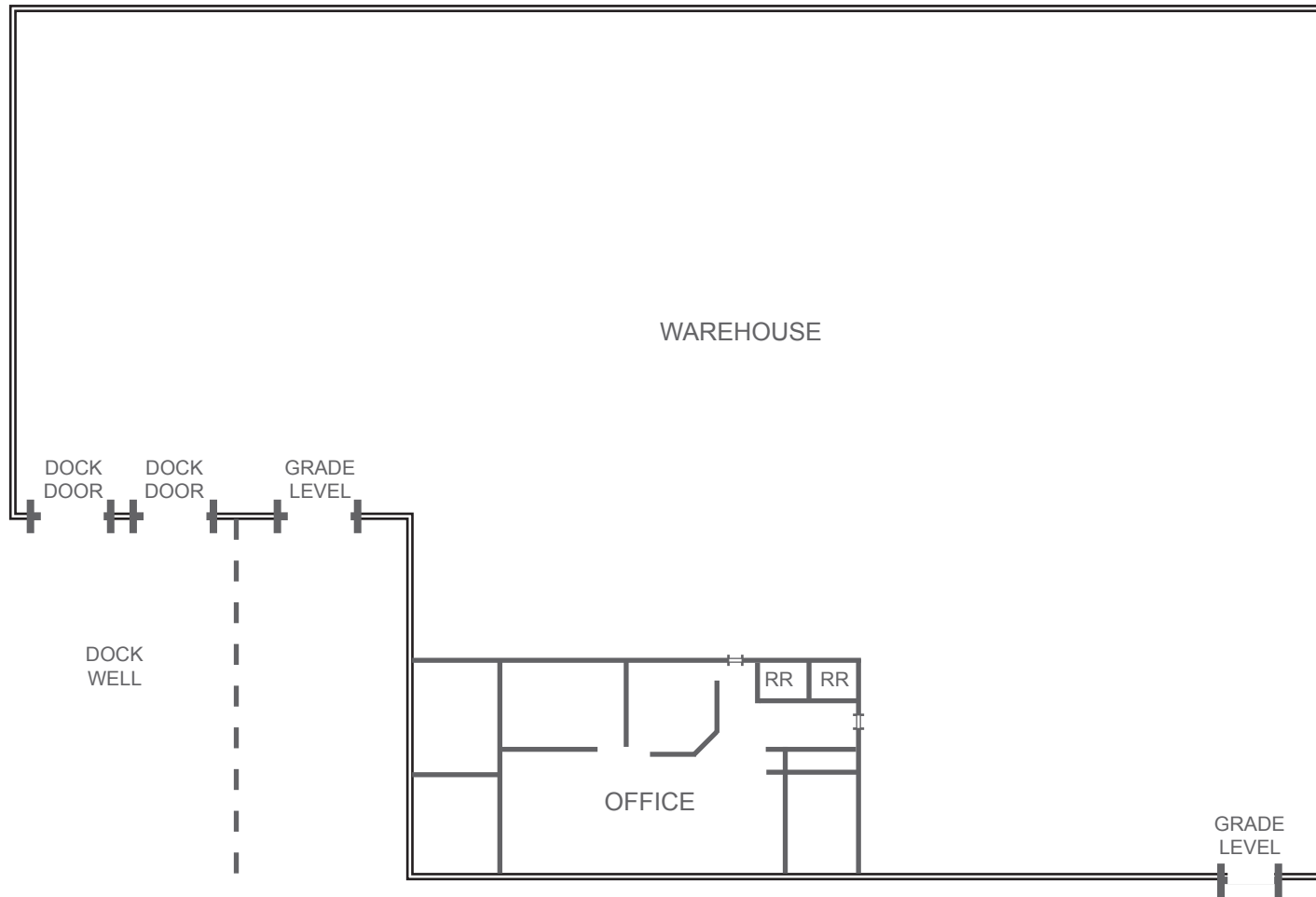
Updated: 06/23/2017

This information was obtained from sources believed reliable but cannot be guaranteed. Any opinions or estimates are used for example only.

INDUSTRIAL SPACE FOR LEASE

1942 E. COMMERCIAL ST.

MERIDIAN, IDAHO 83702



This information was obtained from sources believed reliable but cannot be guaranteed. Any opinions or estimates are used for example only.

THORNTON OLIVER KELLER

COMMERCIAL REAL ESTATE

Experience Results.

INDUSTRIAL SPACE FOR LEASE 1942 E. COMMERCIAL ST.

MERIDIAN, IDAHO 83702

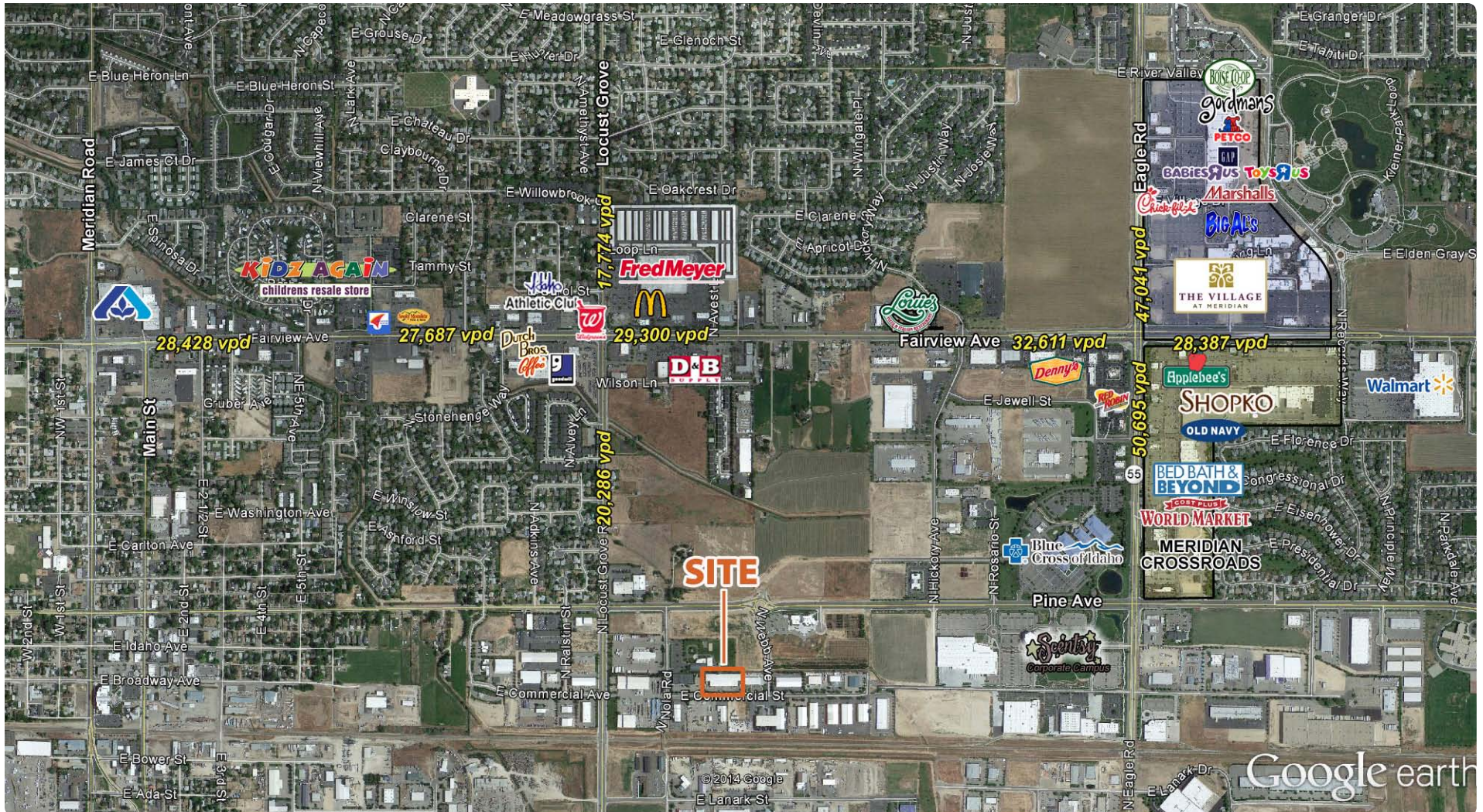


This information was obtained from sources believed reliable but cannot be guaranteed. Any opinions or estimates are used for example only.

INDUSTRIAL SPACE FOR LEASE

1942 E. COMMERCIAL ST.

MERIDIAN, IDAHO 83702



This information was obtained from sources believed reliable but cannot be guaranteed. Any opinions or estimates are used for example only.