

# 660 BAY BOULEVARD | CHULA VISTA

±1,257 - ±5,553 SF OFFICE SPACE FOR LEASE



**Voit**  
REAL ESTATE SERVICES

  
**THE CLARK TEAM**



## PROJECT SUMMARY

- Modern two-story ±34,482 SF building with interior lush garden area
- Recently renovated with new efficient layout
- Elevator served
- Abundant parking
- Located in Chula Vista on busy Bay Boulevard with direct access to I-5 at J Street
- Close proximity to shopping, restaurants, H Street trolley/bus station
- High visibility from Interstate-5
- Gateway entrance to the Chula Vista Marina

## CURRENT AVAILABILITIES

SUITE 101 - ±2,445 SF

SUITE 104 - ±1,445 SF

SUITE 109 - ±1,257 SF

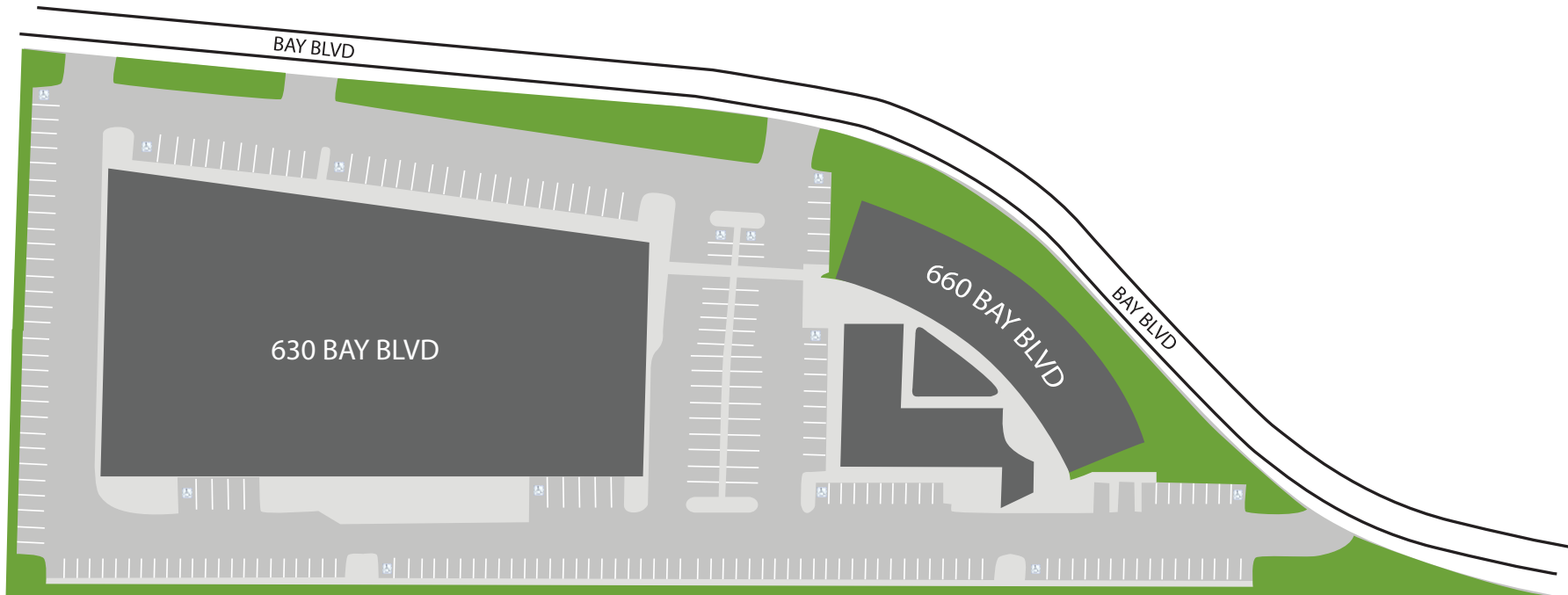
SUITE 204 - ±1,346 SF

SUITE 205 - ±1,540 SF

SUITE 210 - ±2,111 SF

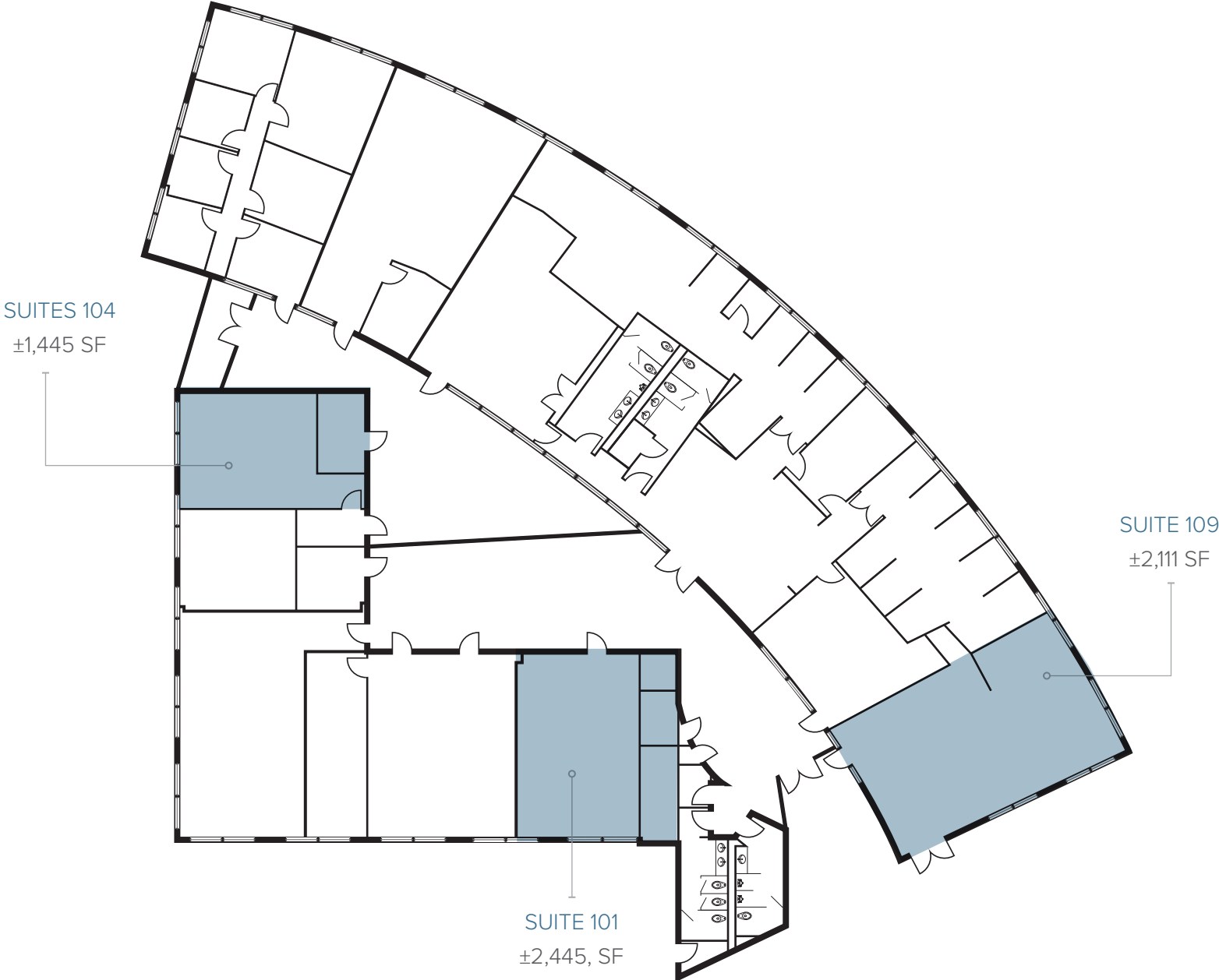
SUITE 214-221 - ±5,553 SF

LEASE RATE: \$2.70/SF



# AVAILABILITY

## 1ST FLOOR



# AVAILABILITY

## 2ND FLOOR

SUITES 214-221

±5,553 SF

SUITES 205-205A

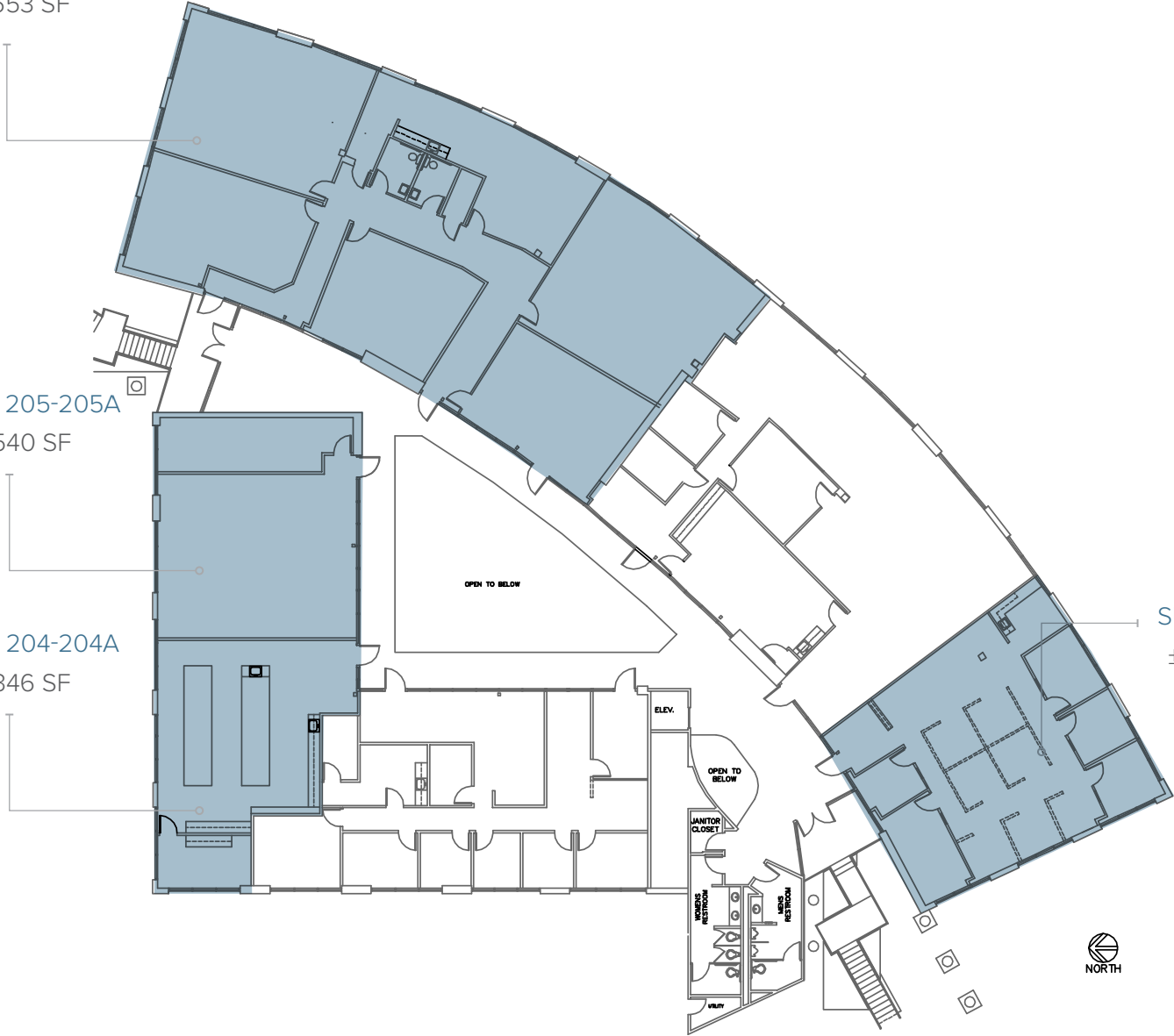
±1,540 SF

SUITES 204-204A

±1,346 SF

SUITE 210

±2,111 SF



**SITE**

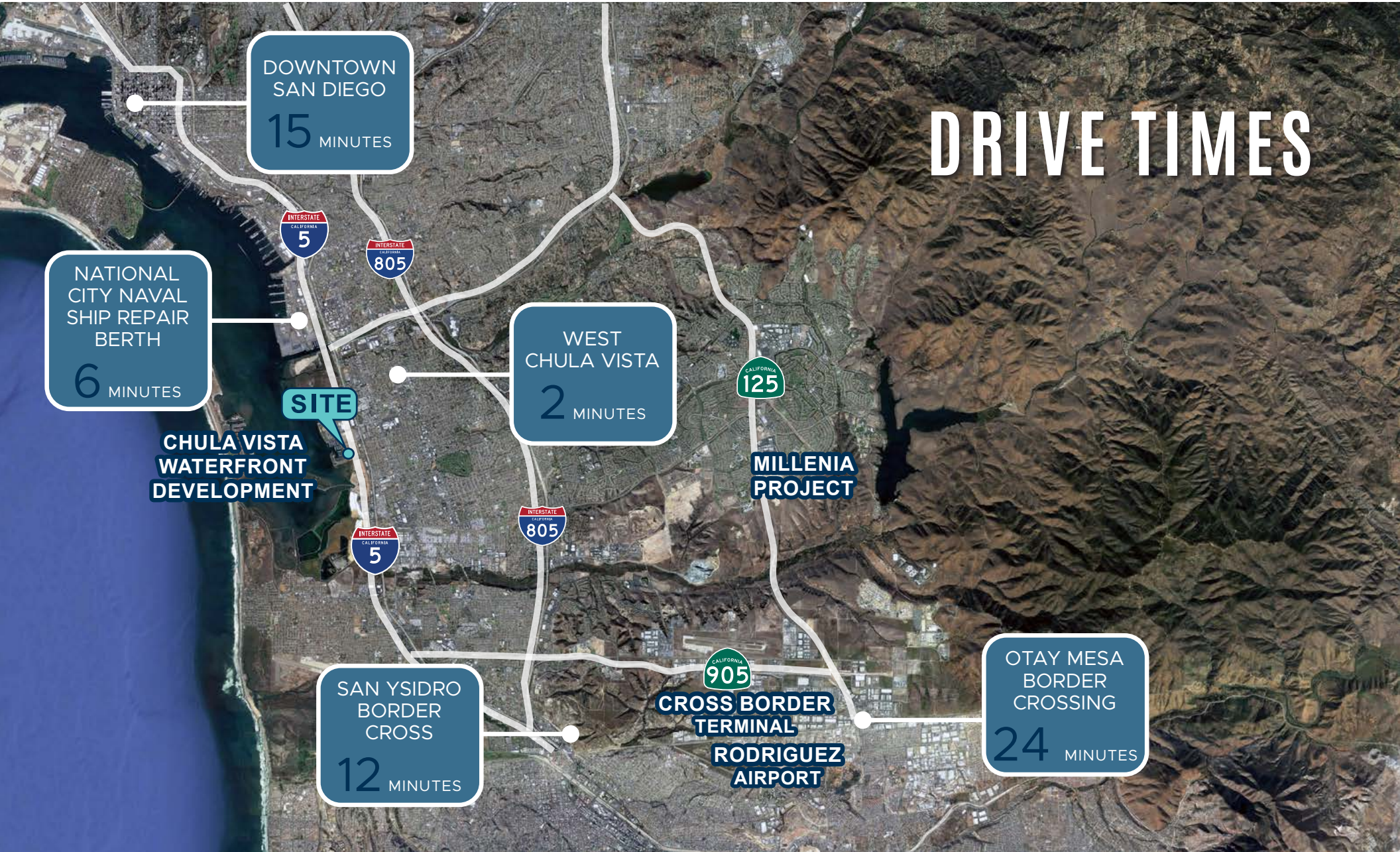
**Chula Vista Center**

- ★ macy's
- CVS pharmacy
- Sears
- JCPenney
- Burlington coat factory
- Red Lobster
- Olive Garden
- Tanera BREAD
- BUFFALO WILD WINGS GRILL & BAR



# AMENITIES MAP

# DRIVE TIMES



## KIMBERLY CLARK, ESQ.

Senior Vice President | Lic. #01439305  
858.458.3343 | [kclark@voitco.com](mailto:kclark@voitco.com)

4180 LA JOLLA VILLAGE DRIVE, SUITE 100, LA JOLLA, CA 92037 | TEL: (858) 453-0505 | FAX: (858) 408-3976 | LIC. #01991785

Licensed as a Real Estate Salesperson by the DRE. The information contained herein has been obtained from sources we deem reliable. While we have no reason to doubt its accuracy, we do not guarantee it. ©2026 Voit Real Estate Services, Inc. All Rights Reserved.

**Voit**  
REAL ESTATE SERVICES

