

CBRE

±9,000 SF FLOORS
UP TO 26,664 RSF AVAILABLE



3 | 9 | 4
P A C I F I C

PROPERTY HIGHLIGHTS



8,830 - 26,644 RSF

Opportunity



HIGHLY IMPROVED

Creative Build-Out



PLUG & PLAY

Ready to Go



EXPOSED

Brick & Timber



UP TO 320

Workstations



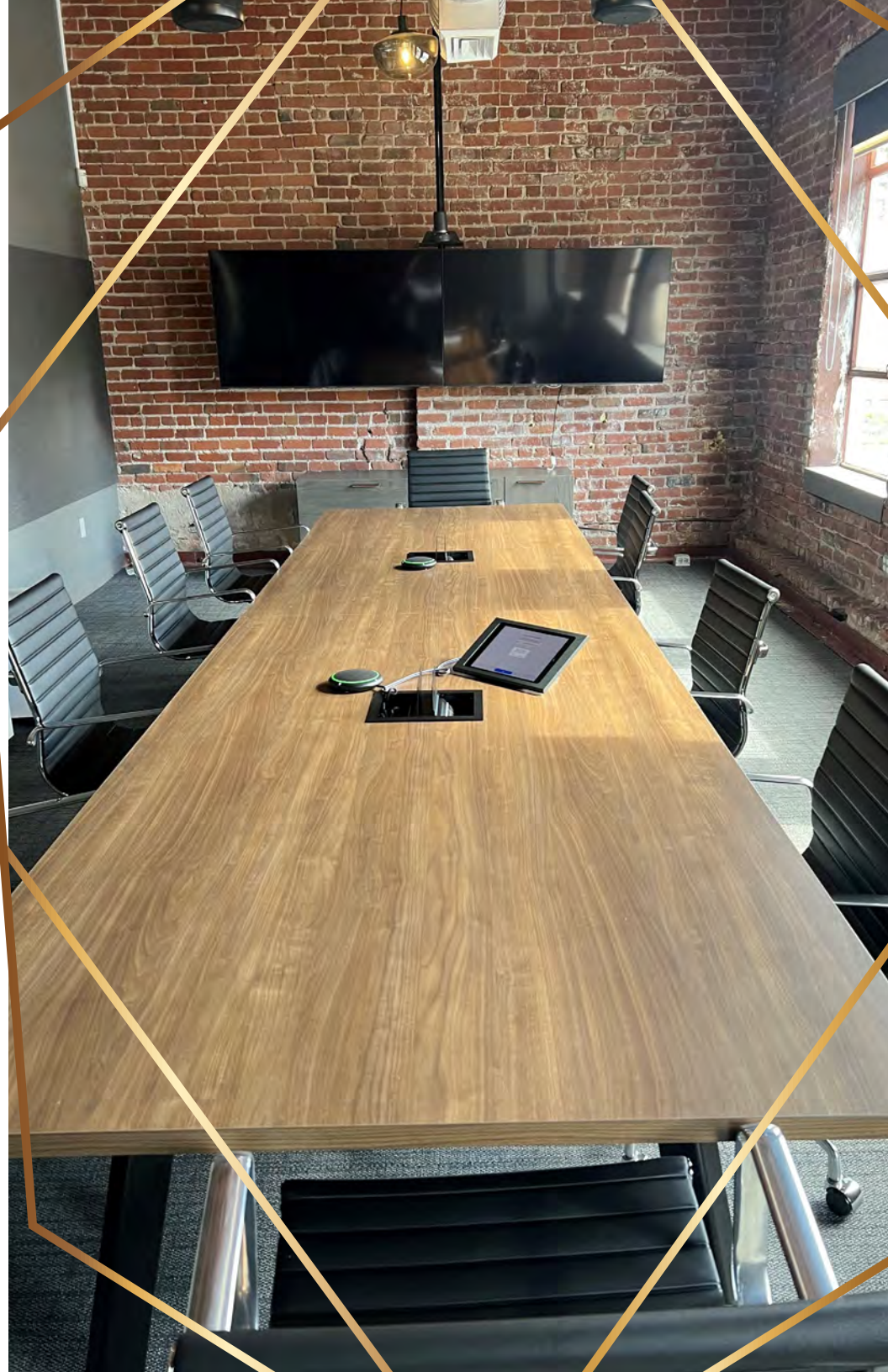
AVAILABLE

April 2025 (Floors 2-3)
March 2026 (Floor 5)



TERM THRU

September 2028



FLOOR 2

+/- 8,905 RSF

- 7 conference rooms
- 1 private office
- 70 workstations
- Kitchenette

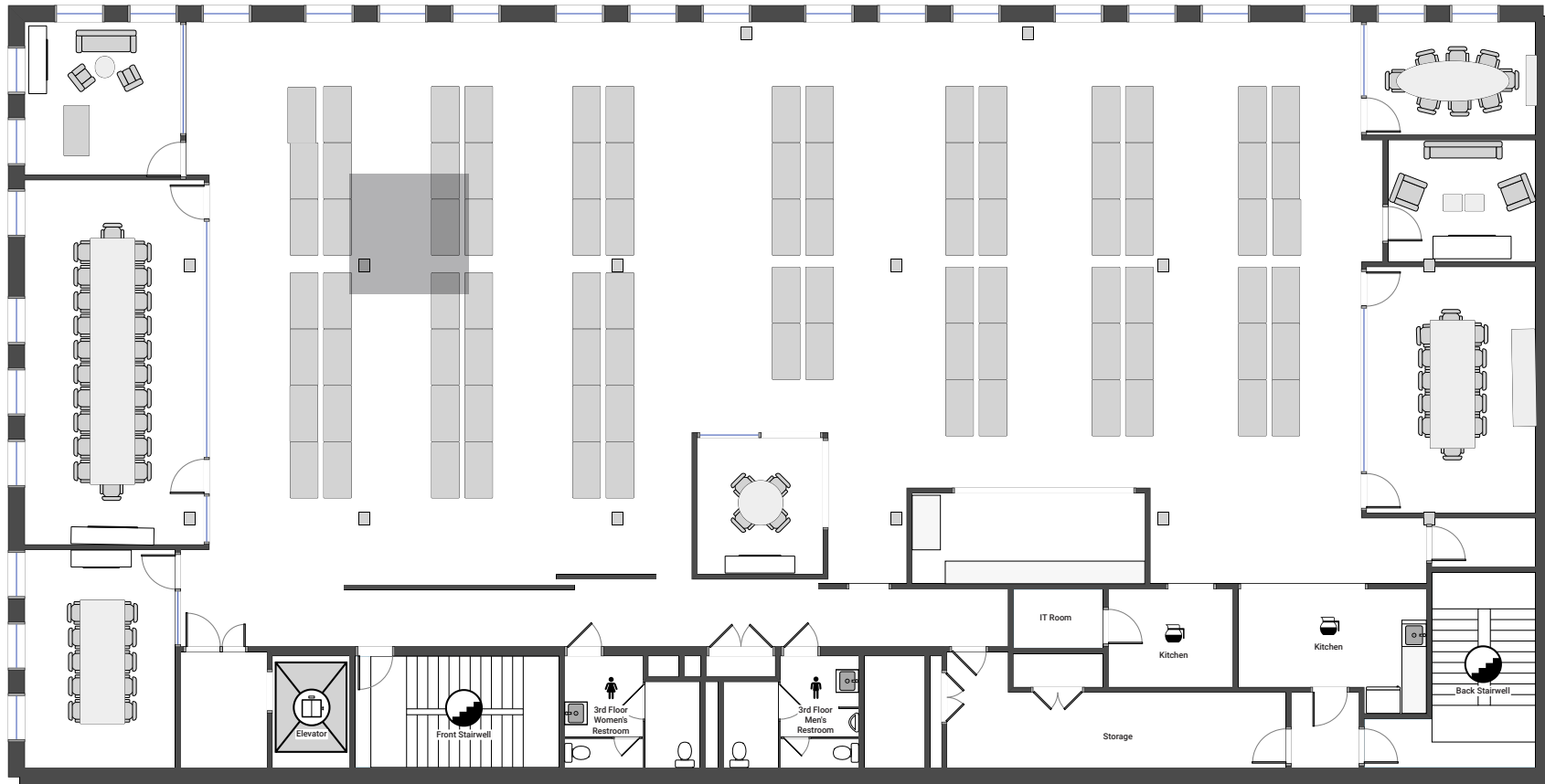


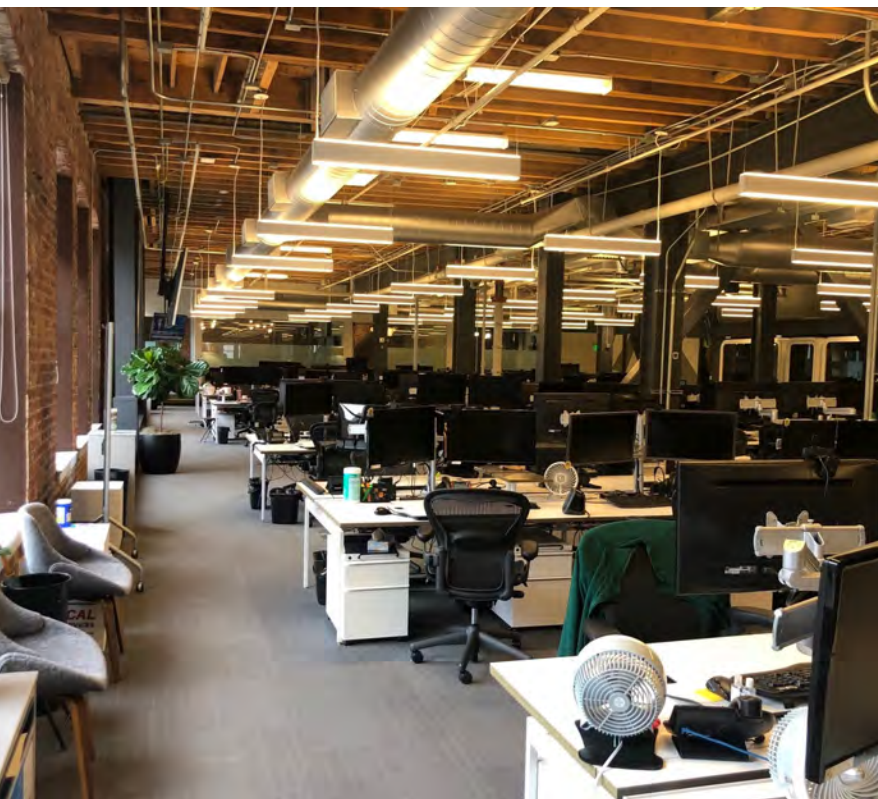


FLOOR 3

+/- 8,830 RSF

- 6 conference rooms
- 1 private office
- Wellness room
- 88 workstations
- Kitchenette

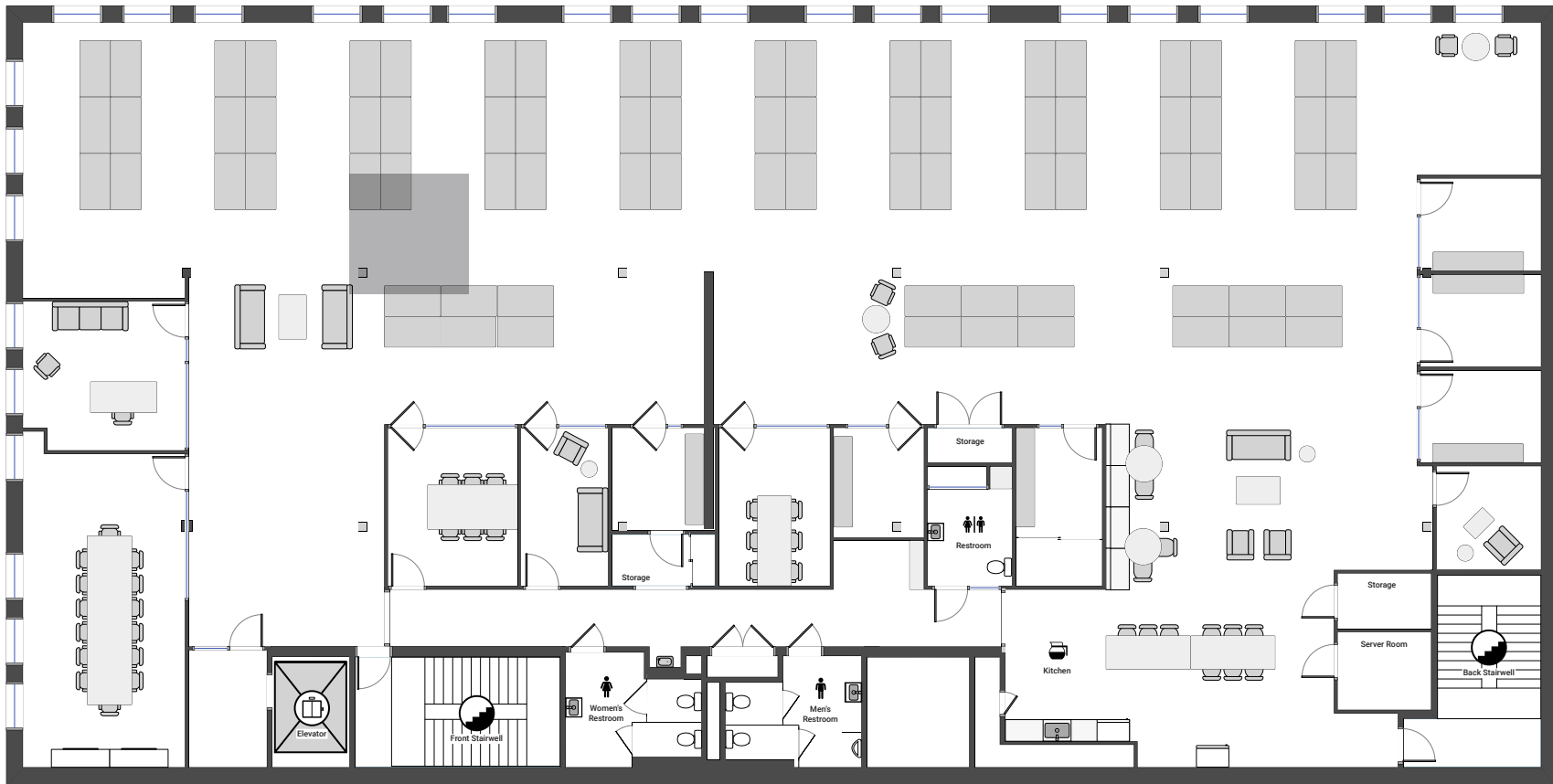




FLOOR 5

+/- 8,905 RSF

- 4 conference rooms
- 6 small video conference rooms
- 1 private office
- Wellness room
- 78 workstations
- Large kitchenette with soft seating





394 PACIFIC SAN FRANCISCO



CONTACTS

Ryan Lowe
Vice President
+1 415 772 0314
ryan.lowe@cbre.com
Lic. 01940857

Luke Ogelsby
Executive Vice President
+1 415 772 0427
luke.ogelsby@cbre.com
Lic. 01422599

Tim Kazul
Vice Chairman
+1 415 772 0189
timothy.kazul@cbre.com
Lic. 01335110

CBRE

© 2024 CBRE, Inc. All rights reserved. This information has been obtained from sources believed reliable but has not been verified for accuracy or completeness. CBRE, Inc. makes no guarantee, representation or warranty and accepts no responsibility or liability as to the accuracy, completeness, or reliability of the information contained herein. You should conduct a careful, independent investigation of the property and verify all information. Any reliance on this information is solely at your own risk. CBRE and the CBRE logo are service marks of CBRE, Inc. All other marks displayed on this document are the property of their respective owners, and the use of such marks does not imply any affiliation with or endorsement of CBRE. Photos herein are the property of their respective owners. Use of these images without the express written consent of the owner is prohibited.