

LEASE

# HIGH PROFILE MEDICAL BUILDING

## ±2,950-SF MEDICAL OFFICE

## ±1,200-SF BASEMENT / STORAGE



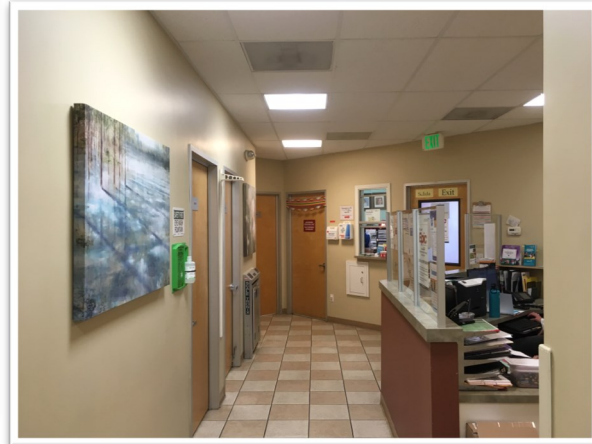
# 1030 NEVIN AVENUE

# RICHMOND CA 94801

### BASEMENT SPACE FREE!



SHOWING BY APPOINTMENT ONLY — PLEASE DO NOT DISTURB TENANT



Superb single-tenant medical office building in Downtown Richmond at the corner of [Nevin Avenue and 11th Street](#). [Walking distance to BART](#) and a block from [Kaiser Permanente Richmond Medical Center](#). The premises consist of ±2,950 SF on the ground floor plus ±1,200 SF of basement / storage area. Features:

- Large reception / waiting area
- Six (6) exam rooms
- Conference / education room
- Three (3) offices
- Lab
- Breakroom
- Off-street handicap parking

[FLOOR PLAN PAGE 2](#)

**±2,950-SF OFFICE: \$1.75 PSF / \$5,163 MONTHLY + NNN**  
**±1,200-SF BASEMENT: \$0**

**Francis Griffin**

510-450-1405

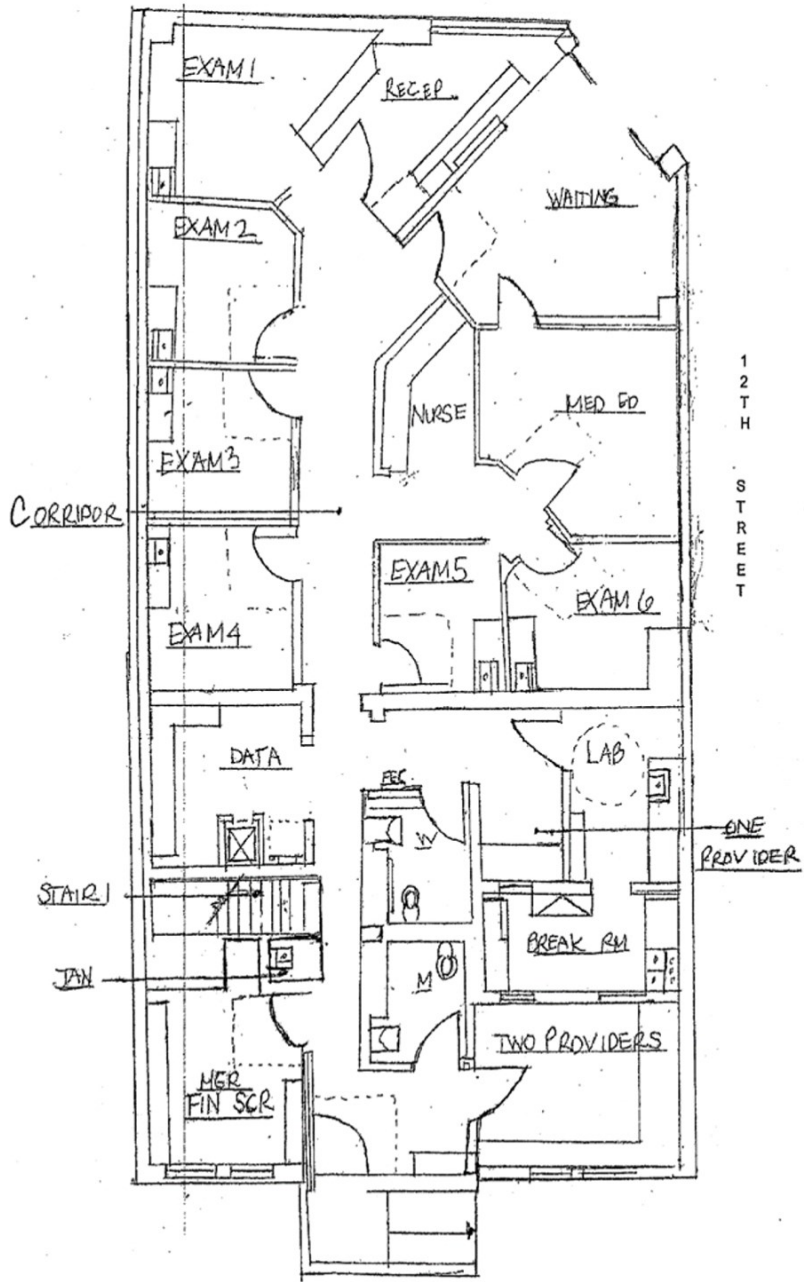
fgriffin@mrecommercial.com

CA DRE No: 02016713

**STREET VIEW**



All information herein is offered in good faith and deemed accurate, but not guaranteed.



1030 NEVIN AVENUE, RICHMOND, CA