



Office/Laboratory/Flex Building for Sale or Lease

**951 NW TECHNOLOGY DRIVE
LEE'S SUMMIT, MISSOURI**

Property Highlights

- Class A construction
- 29,400 sf (±) building
- 6,000 sf (±) warehouse space (can expand warehouse area to suit)
- 23,400 sf (±) of high end laboratory space, private offices, mezzanine offices, cubicle space, conference rooms and break room
- 4.43 (±) acre lot with 102 parking spaces
- 22' clear height
- 800A / 480V 3 Phase
- Generator ready site
- 1 dock door (can add dock and drive-in loading)
- Located just off I-470
- For lease \$6.50/sf, NNN
- For sale at \$3,969,000.00

For information, please contact:

Michael L. VanBuskirk, SIOR, CCIM, CRE

Executive Managing Director, Principal
t 816-512-1010
mvanbuskirk@nzimmer.com

Justin A. Beal

Senior Managing Director
t 816-268-4241
jbeal@nzimmer.com

Scott E. Bluhm, SIOR

Managing Director
t 816-268-4224
sbluhm@nzimmer.com

1220 Washington Street, Suite 300
Kansas City, MO 64105

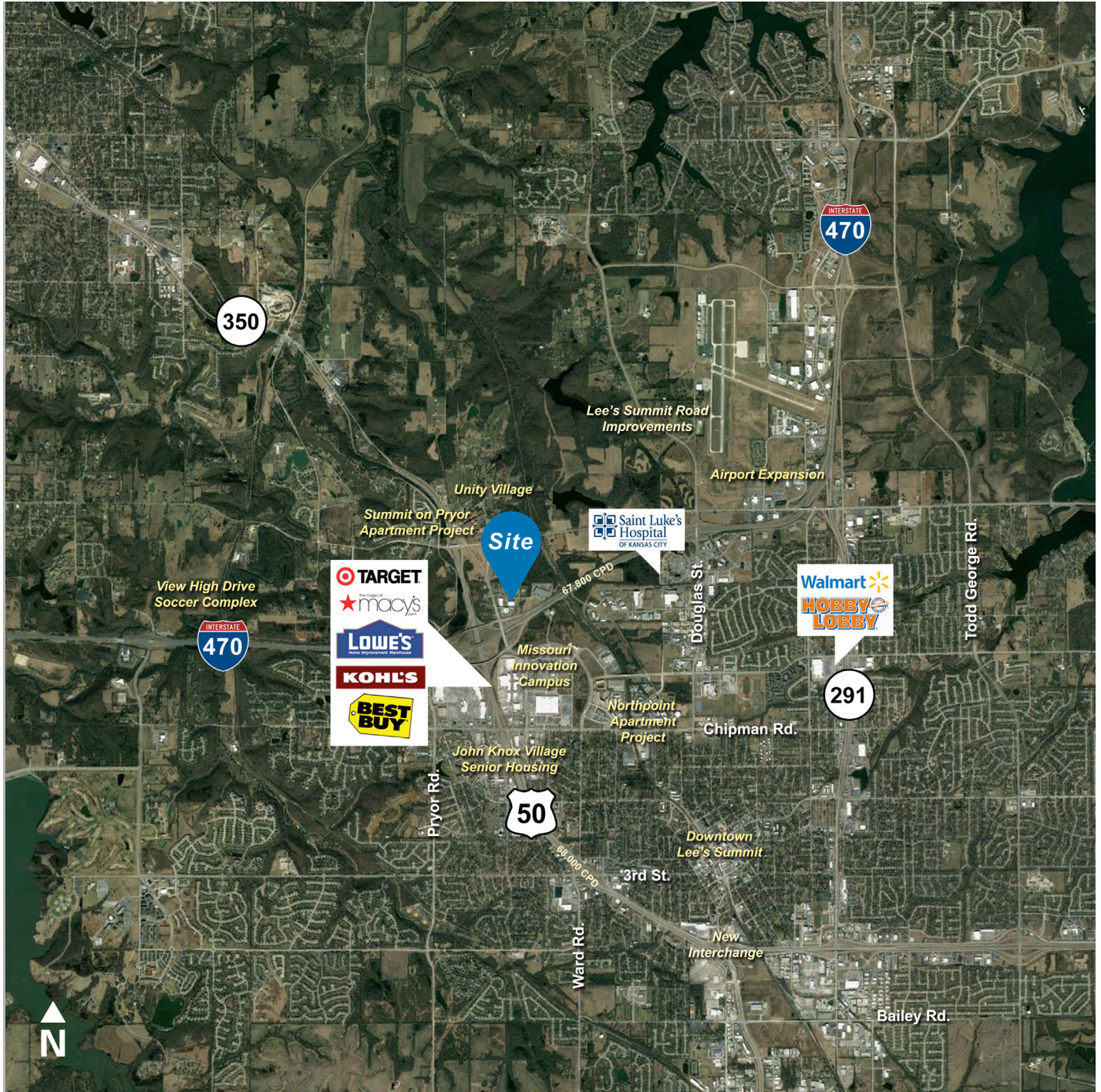
nrmkzimmer.com



**NEWMARK
ZIMMER**

The information contained herein has been obtained from sources deemed reliable but has not been verified and no guarantee, warranty or representation, either express or implied, is made with respect to such information. Terms of sale or lease and availability are subject to change or withdrawal without notice.

951 NW TECHNOLOGY DRIVE, LEE'S SUMMIT, MISSOURI



CONTACT

Michael L. VanBuskirk, SIOR, CCIM, CRE
Executive Managing Director, Principal
t 816-512-1010
mvanbuskirk@nzimmer.com

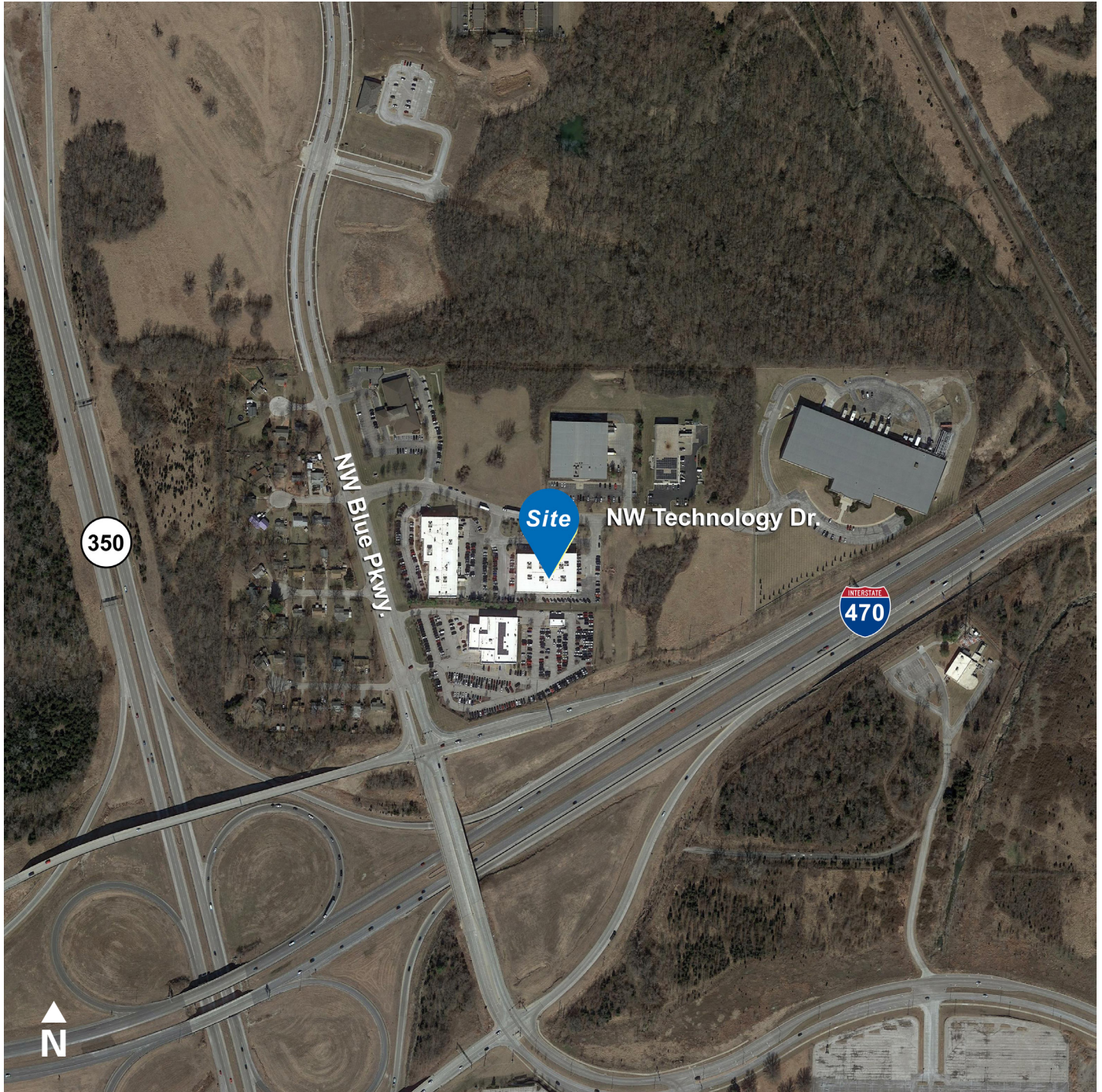
nmrkzimmer.com

Justin A. Beal
Senior Managing Director
t 816-268-4241
jbeal@nzimmer.com

Scott E. Bluhm, SIOR
Managing Director
t 816-268-4224
sbluhm@nzimmer.com



951 NW TECHNOLOGY DRIVE, LEE'S SUMMIT, MISSOURI



CONTACT

Michael L. VanBuskirk, SIOR, CCIM, CRE

Executive Managing Director, Principal

t 816-512-1010

mvanbuskirk@nzimmer.com

nmrkzimmer.com

Justin A. Beal

Senior Managing Director

t 816-268-4241

jbeal@nzimmer.com

Scott E. Bluhm, SIOR

Managing Director

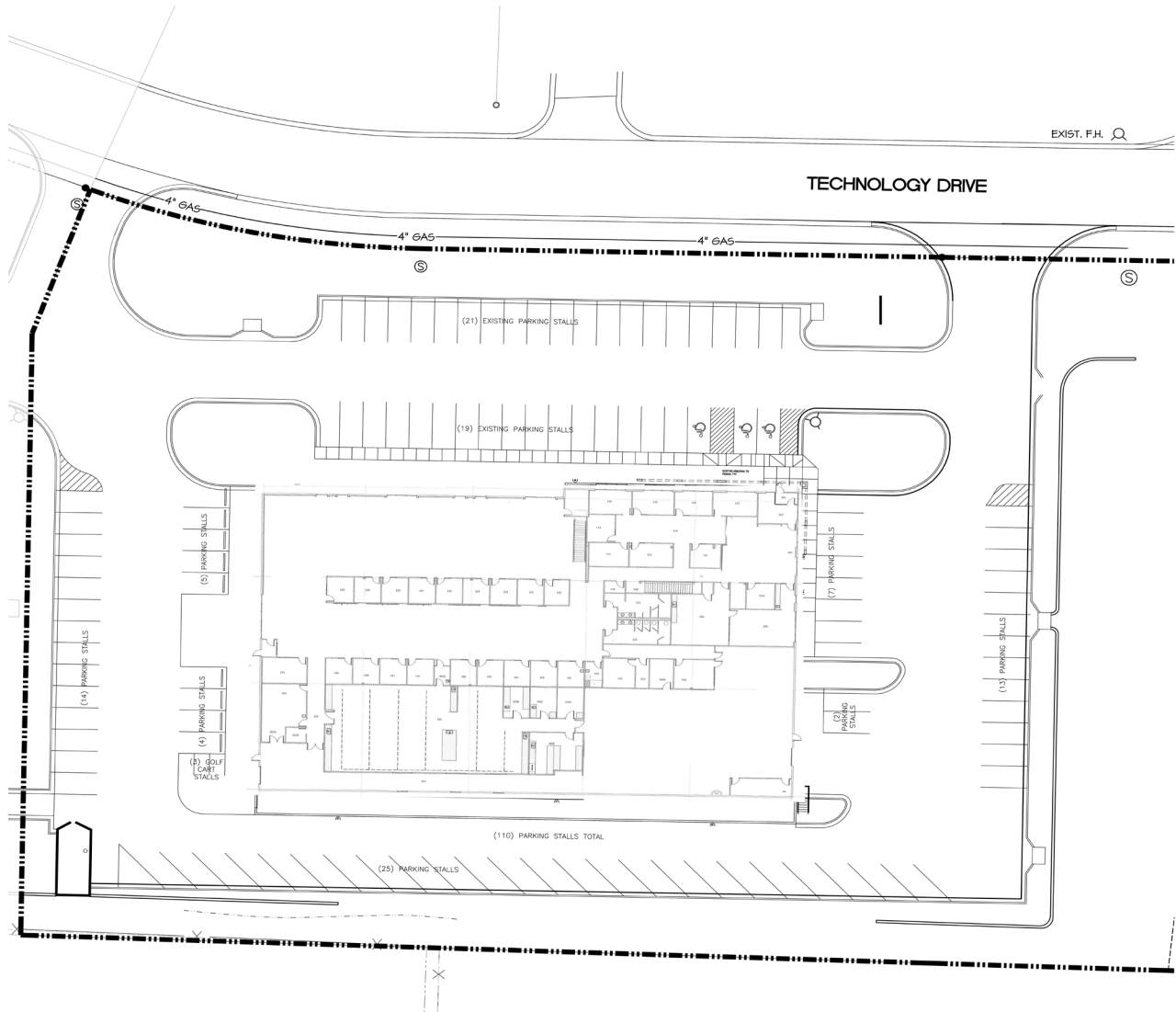
t 816-268-4224

sbluhm@nzimmer.com

NEWMARK
ZIMMER

951 NW TECHNOLOGY DRIVE, LEE'S SUMMIT, MISSOURI

Floor Plan



CONTACT

Michael L. VanBuskirk, SIOR, CCIM, CRE

Executive Managing Director, Principal

t 816-512-1010

mvanbuskirk@nzimmer.com

nmrkzimmer.com

Justin A. Beal

Senior Managing Director

t 816-268-4241

jbeal@nzimmer.com

Scott E. Bluhm, SIOR

Managing Director

t 816-268-4224

sbluhm@nzimmer.com

**NEWMARK
ZIMMER**

951 NW TECHNOLOGY DRIVE, LEE'S SUMMIT, MISSOURI



CONTACT

Michael L. VanBuskirk, SIOR, CCIM, CRE

Executive Managing Director, Principal

t 816-512-1010

mvanbuskirk@nzimmer.com

nmrkzimmer.com

Justin A. Beal

Senior Managing Director

t 816-268-4241

jbeal@nzimmer.com

Scott E. Bluhm, SIOR

Managing Director

t 816-268-4224

sbluhm@nzimmer.com

NEWMARK
ZIMMER