

MORGAN PARK COMMONS



REDEVELOPMENT OPPORTUNITY

115th & Halsted St / Morgan Park / Chicago, IL



Availability

5,000–40,000 SF

Traffic Counts

Halsted St: 20,500 vpd
115th St: 8,400 vpd

Demographics

	1 Mile	3 Miles	5 Miles
POPULATION	26,060	168,086	419,583
HOUSEHOLDS	8,310	59,332	153,069
AVG HOUSEHOLD INCOME	\$58,585	\$67,124	\$65,533
DAYTIME POPULATION	20,896	137,183	344,421

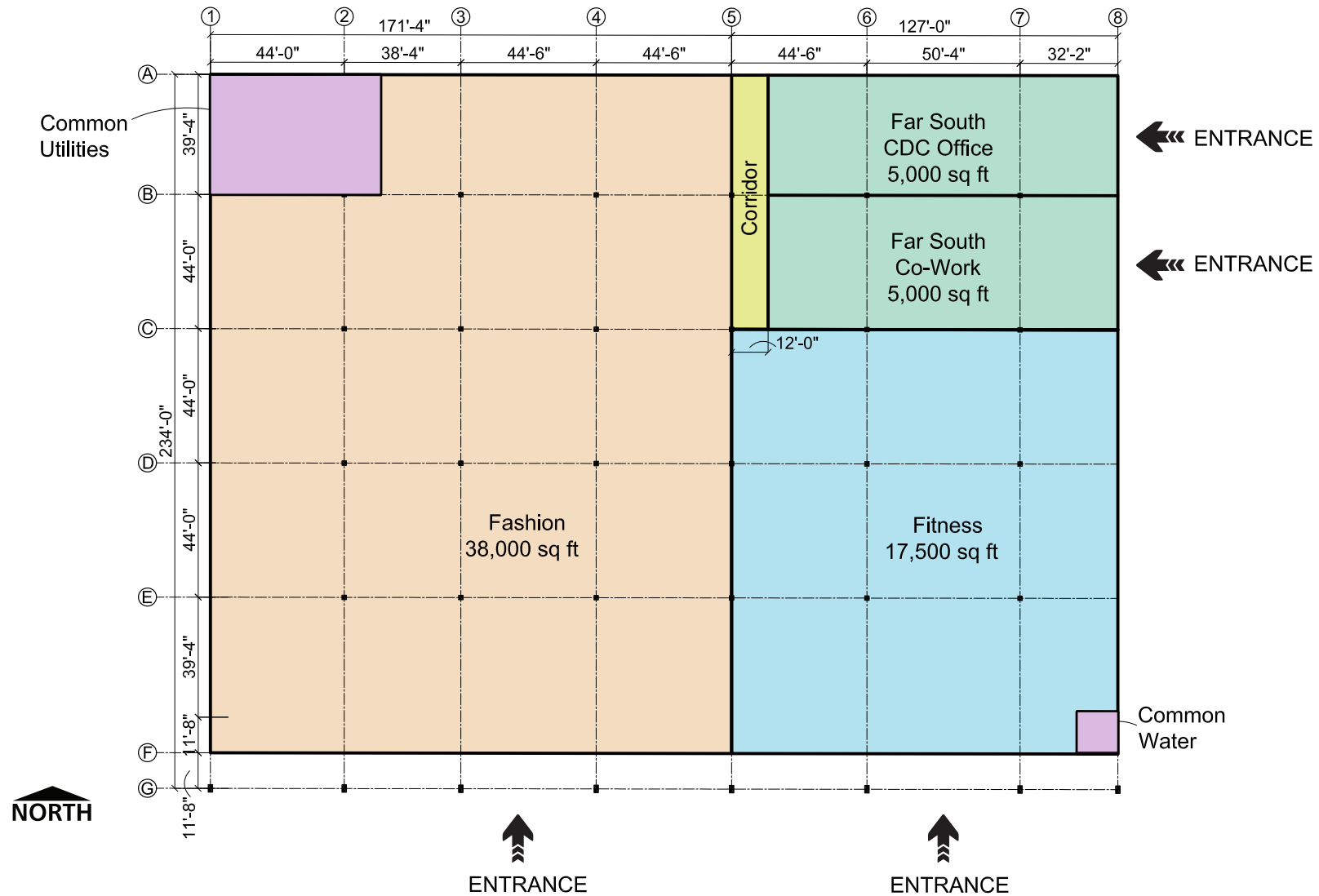
RETAIL OPPORTUNITY

MORGAN PARK COMMONS

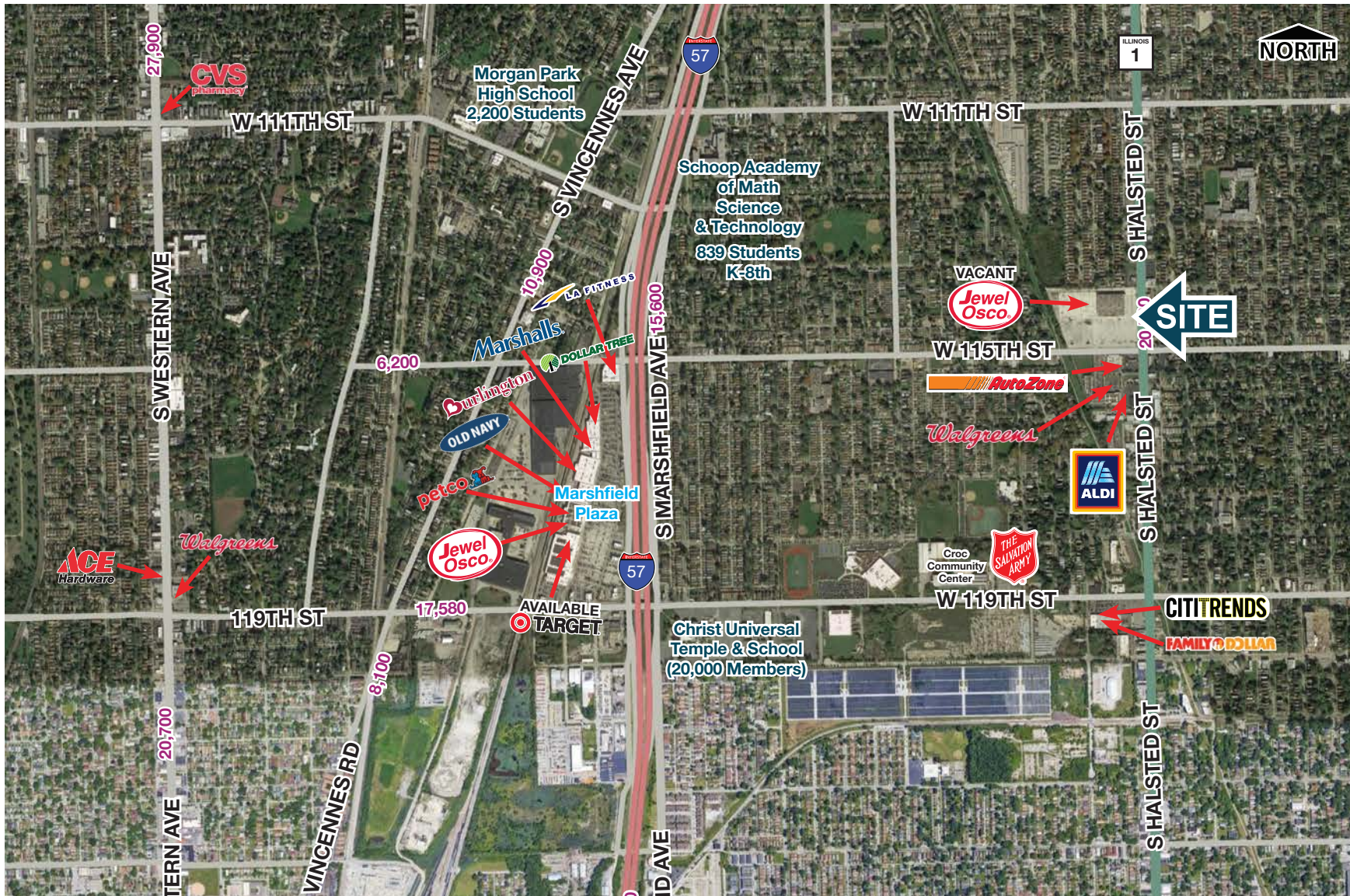


MORGAN PARK COMMONS

Conceptual Demising Plan



MORGAN PARK COMMONS



MORGAN PARK COMMONS



Dick
Spinell

Mid-America Asset
Management, Inc.

T: 630.954.7364

DSpinell@MidAmericaGrp.com



One Parkview Plaza, 9th Floor
Oakbrook Terrace, Illinois 60181
630.954.7300

MidAmericaGrp.com

Owner:



Developer:

