



1241 North McDowell Boulevard • P.O. Box 2210 • Petaluma • CA 94953-2210
 Fax: (707) 769-5282 • Phone: (707) 769-5280

OFFICE/WAREHOUSE FOR LEASE



ADDRESS: 1009 Clegg Court, Petaluma, CA

DESCRIPTION: Approximately 3650 square feet in the multi-tenant designed building. Includes improved office space with drop ceilings, carpet, heating, ventilation, air-conditioning and handicapped bathroom. 18-foot clear height in warehouse, fire sprinklers through-out, and 12 x 12 roll-up doors.

PRICE: Warehouse 1,025 sq.ft. @ \$1.00 per sq.ft. = \$1,025.00
 Office 2,625 sq.ft. @ \$1.40 per sq.ft. = \$3,675.00
 \$4,700.00/month

Suite	Whse. Sq. Ft.	Office/RD Sq. Ft.	Total
C & D	1,025	2,625	3,650
			3,650

Comments: Auto repair and marijuana uses are strictly prohibited.
 2.5/1,000 s.f. parking ratio.
 Owner would consider removing 1,025 sq.ft. of office improvements.

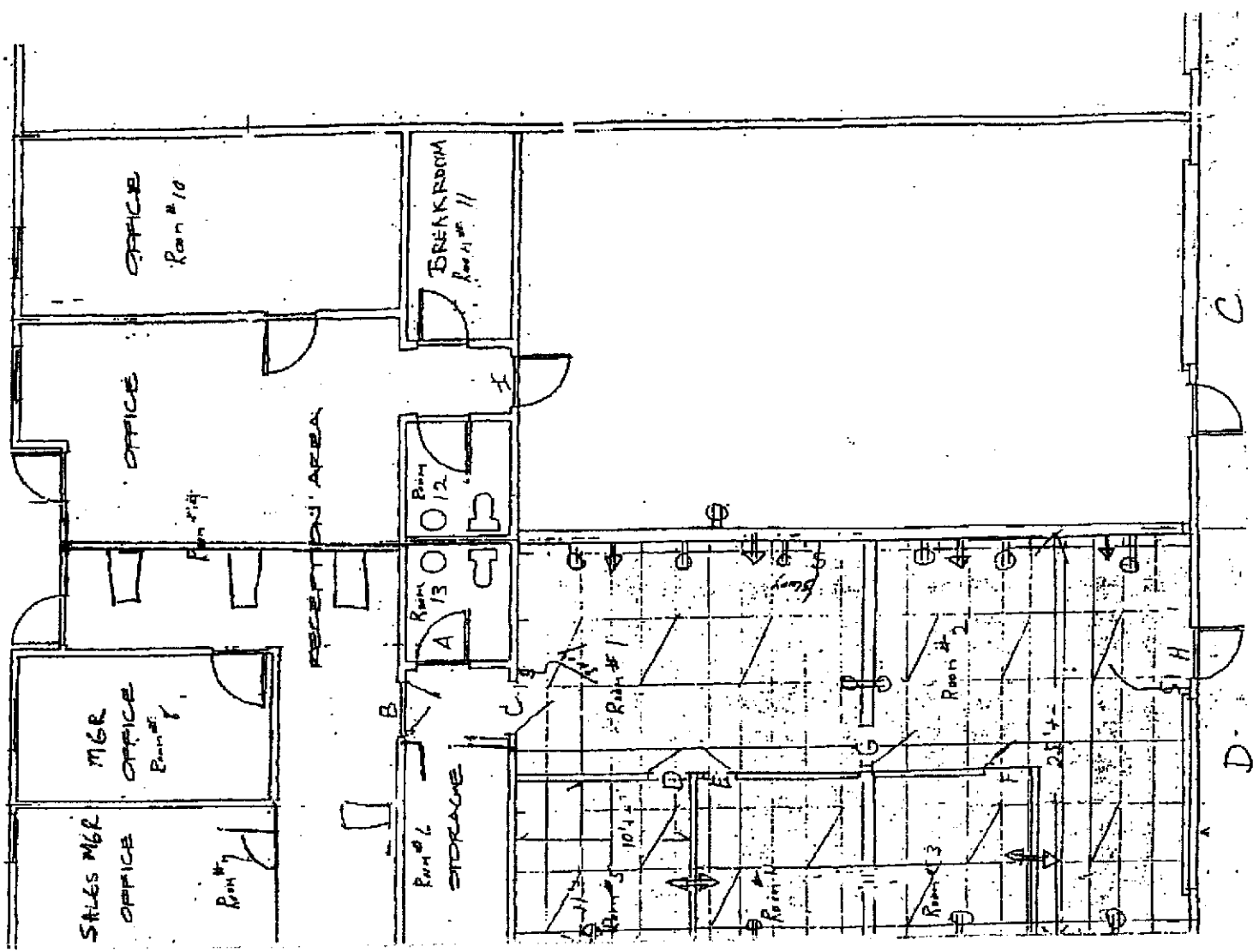
ZONING: Industrial

FOR MORE INFORMATION CONTACT: 707-769-5280

Bryant R. Moynihan, Broker
Michele Souza, Broker

DRE# 00914397
DRE# 01203410

bryant@nexusrealty.com



1009 Clegg Ct. C: D