


Plan 15

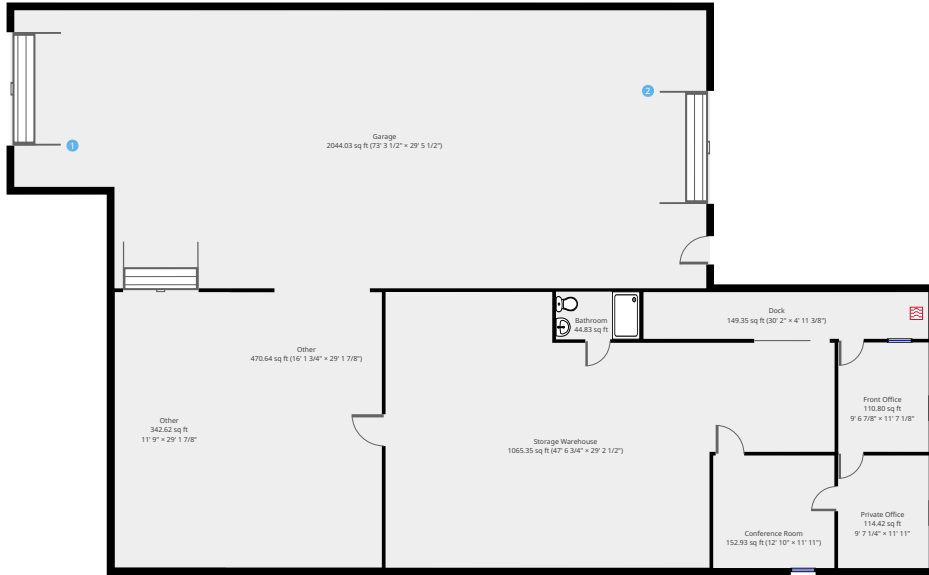
140 Palmer Street, Mount Angel, Oregon, United States 97362



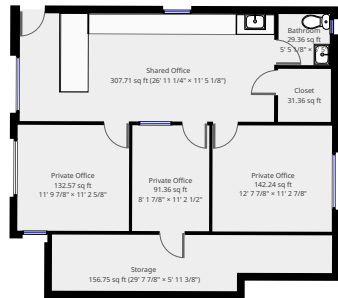
Statistics

Area: 3717 sq ft

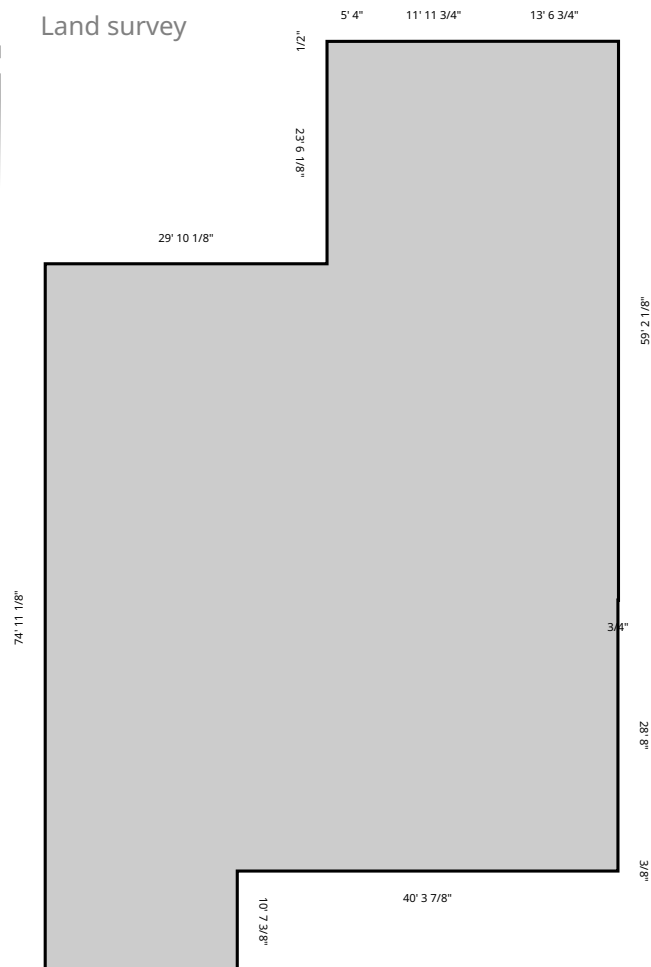
Ground Floor



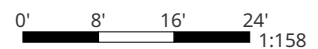
2nd Floor



Land survey



THIS FLOORPLAN IS PROVIDED WITHOUT WARRANTY OF ANY KIND. RYFI MEDIA DISCLAIMS ANY WARRANTY INCLUDING, WITHOUT LIMITATION, SATISFACTORY QUALITY OR ACCURACY OF DIMENSIONS. THE SQUARE FOOTAGE IS THE OPINION OF THE MEASURER AND SHOULD NOT BE RELIED UPON FOR TAX OR FINANCIAL CONSL...



Plan 15

140 Palmer Street, Mount Angel, Oregon, United States 97362

1



Garage Door

- Height: 13' 11"

2



Garage Door

- Height: 15' 7"