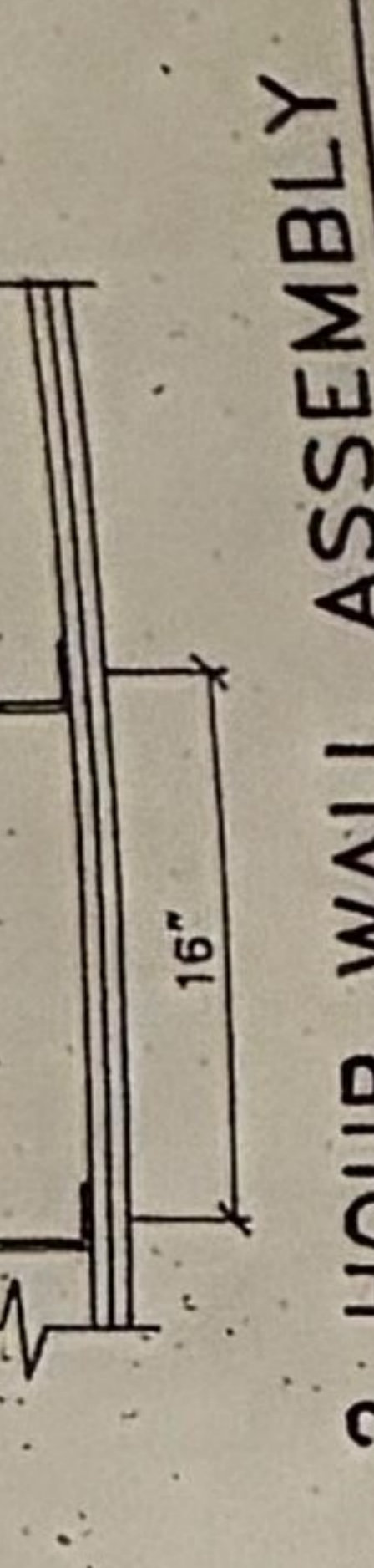


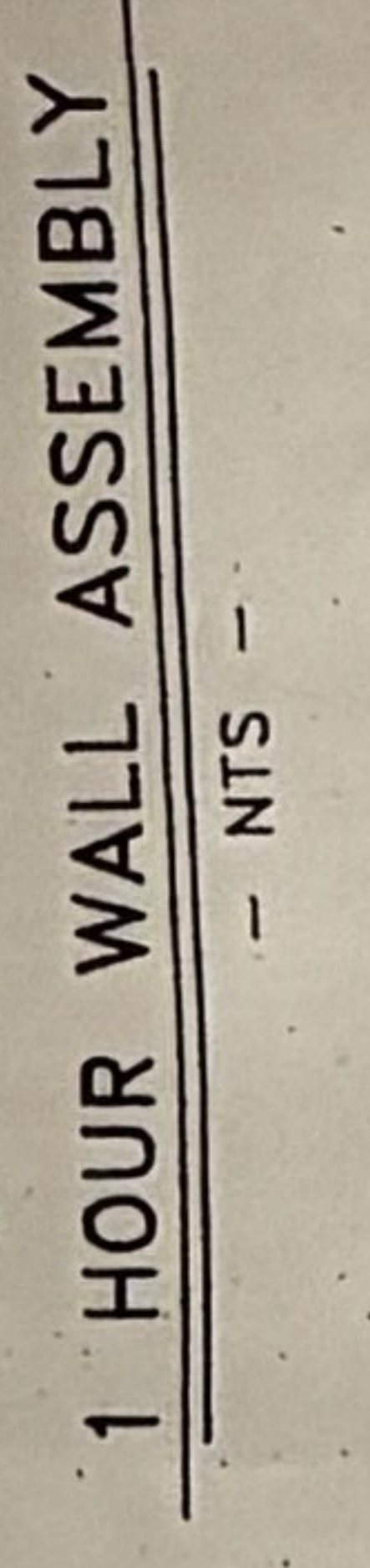
(2) LAYERS OF 5/8" FRX. GYPSUM BOARD (LAMINATED) EACH SIDE OF METAL STUDS TO ROOF DECK & SEAL WITH GYPSUM.



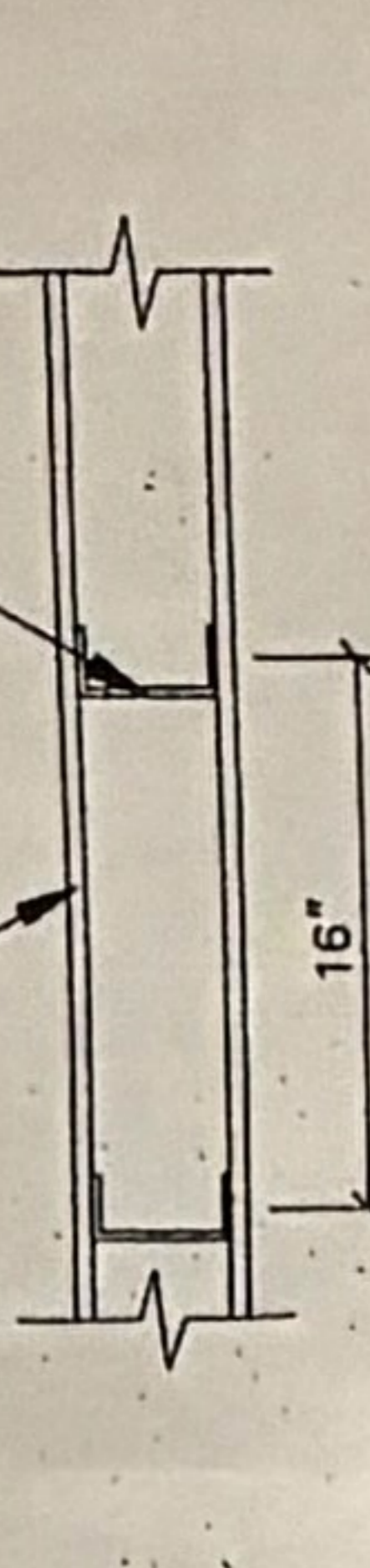
2 HOUR WALL ASSEMBLY
- NTS -



1 HOUR WALL ASSEMBLY
- NTS -

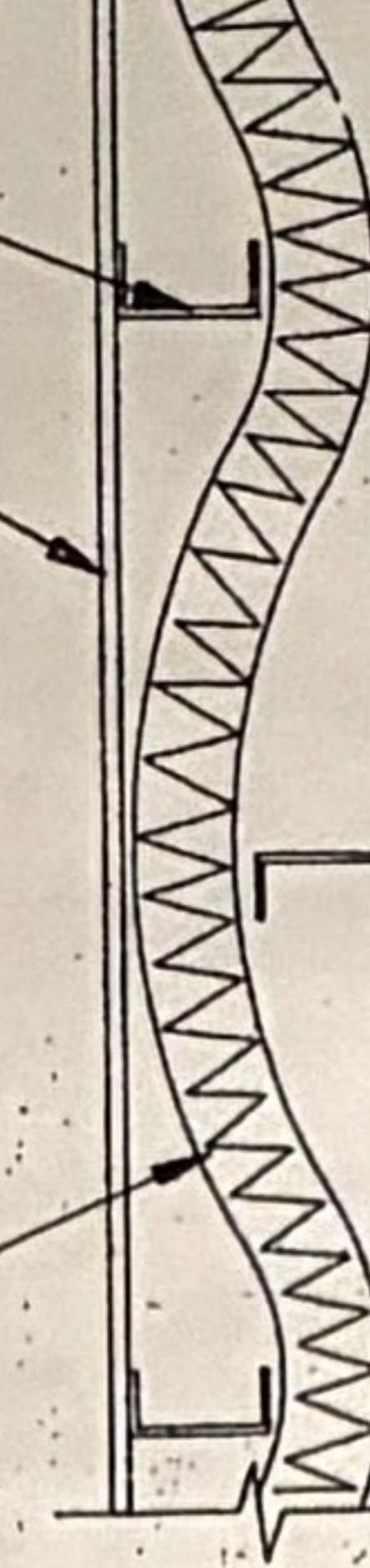


NON-RATED PARTITION WALL
- NTS -



SOUND-PROOF DIMISING WALL
- NTS -

NOTE: WALL LOCATED BETWEEN WILLS OIL (GROUP B) & LEAS SPACE (GROUP M) TO ROOF DECK & SEAL WITH GYPSUM.



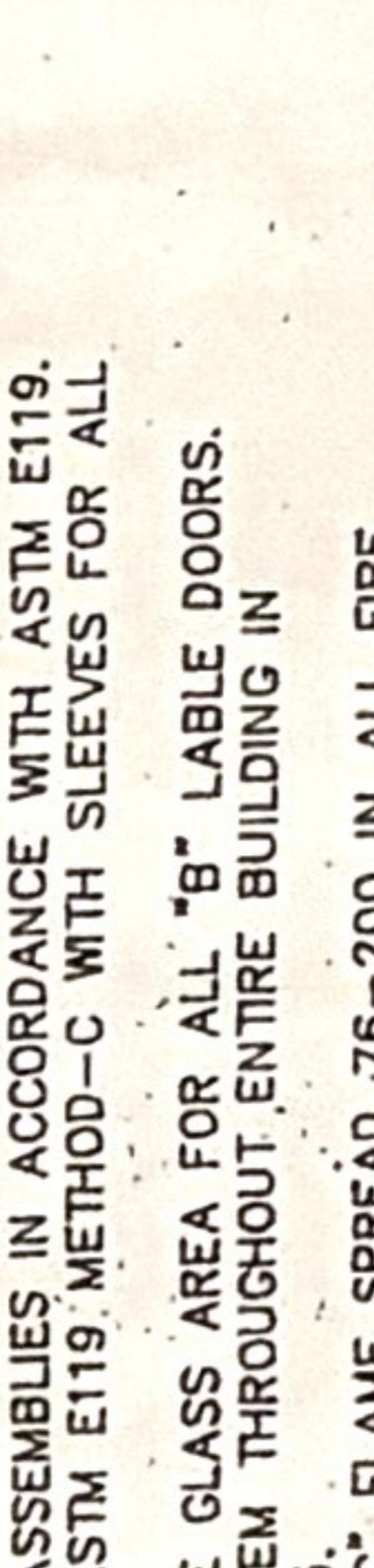
2 HOUR WALL ASSEMBLY
- NTS -

1 HOUR WALL ASSEMBLY
- NTS -

NON-RATED PARTITION WALL
- NTS -

SOUND-PROOF DIMISING WALL
- NTS -

NOTE: WALL LOCATED BETWEEN WILLS OIL (GROUP B) & LEAS SPACE (GROUP M) TO ROOF DECK & SEAL WITH GYPSUM.



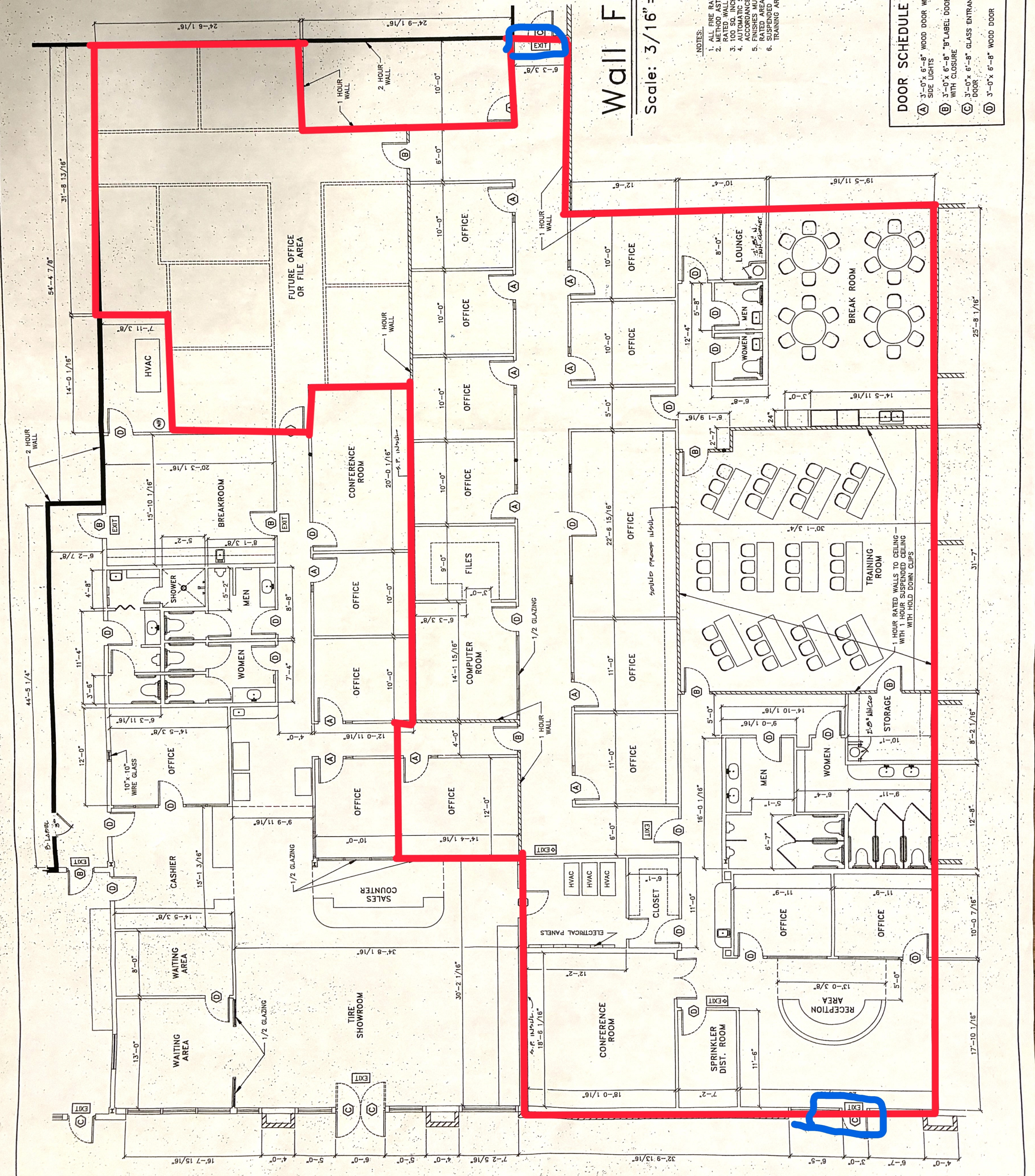
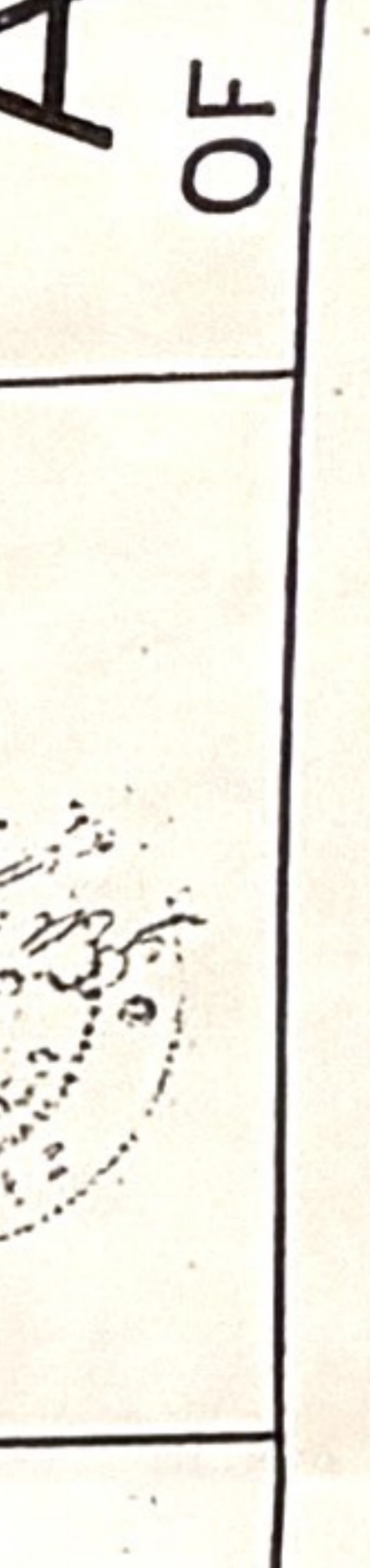
2 HOUR WALL ASSEMBLY
- NTS -

1 HOUR WALL ASSEMBLY
- NTS -

NON-RATED PARTITION WALL
- NTS -

SOUND-PROOF DIMISING WALL
- NTS -

NOTE: WALL LOCATED BETWEEN WILLS OIL (GROUP B) & LEAS SPACE (GROUP M) TO ROOF DECK & SEAL WITH GYPSUM.



Wall Framing Plan

Scale: 3/16" = 1'-0"

- NOTES:
1. ALL FIRE RATINGS & WALL ASSEMBLIES IN ACCORDANCE WITH ASTM E119.
 2. METHOD ASTM E814 & OR ASTM E119, METHOD-C WITH SLEEVES FOR ALL RATED WALL PENETRATIONS.
 3. 100 SQ. INCH MAXIMUM WIRE GLASS AREA FOR ALL "B" LABEL DOORS.
 4. AUTOMATIC SPRINKLER SYSTEM THROUGHOUT ENTIRE BUILDING IN ACCORDANCE WITH NFPA 13.
 5. FINISHES MUST BE CLASS "C" FLAME SPREAD 76-200 IN ALL FIRE SUSCEPTIBLE CEILING RESISTANCE. 1 PSF UPLET FORCE IN WILLS OIL TRAINING AREA THRU RATED WALLS (REF. ASTM C635 & C636)

DOOR SCHEDULE	
A	3'-0" x 6'-8" WOOD DOOR WITH SIDE LIGHTS
B	3'-0" x 6'-8" "B" LABEL DOOR WITH CLOSURE
C	3'-0" x 6'-8" GLASS ENTRANCE DOOR
D	3'-0" x 6'-8" WOOD DOOR

**1403 NORTH EXPRESSWAY
WILLS BUILDING PLAN**

DRAWN BY: **G.A. FISHER CO. LTD.**
DRAWING DATE: **10-14-93**
SCALE: **3/16" = 1'-0"**
CONST. RELEASE DATE:
LOCATION: **GRIFFIN, GEORGIA**

SHEET NO: **A-2**
OF