

**WE HAVE MOVED AND CHANGED OUR NAME!**

**CENTER**

**for**

**PRINT**

**and**

**COLLABORATIVE**

**ARTS**

**O  
P  
E  
N  
I  
N  
G  
  
I  
N  
  
J  
U  
L  
Y**



**A  
N  
D  
  
E  
X  
P  
A  
N  
D  
I  
N  
G**

**705 Ann St → [See Google Maps](#)**

## **INTERESTED IN A STUDIO?**

Fill out the [Tenant Application Form](#)

If you have questions, please reach out to us!

[info@columbusprintedarts.org](mailto:info@columbusprintedarts.org)



## **PRIVATE STUDIO RENTAL**

### **TERMS & PRICING:**

- Studios will be ready July 1st
- One-year minimum lease term
- Security deposit of 1 month rent + first month rent payment due upon lease signing
- \$1.75/SF (no CPAC membership\*)
- \$1.90/SF (CPAC Artist membership included at a discounted rate of \$40/mo)
- \$2.25/SF (24/7 CPAC Artist membership included at a discounted rate of \$133/mo)

\*membership details included on page 8



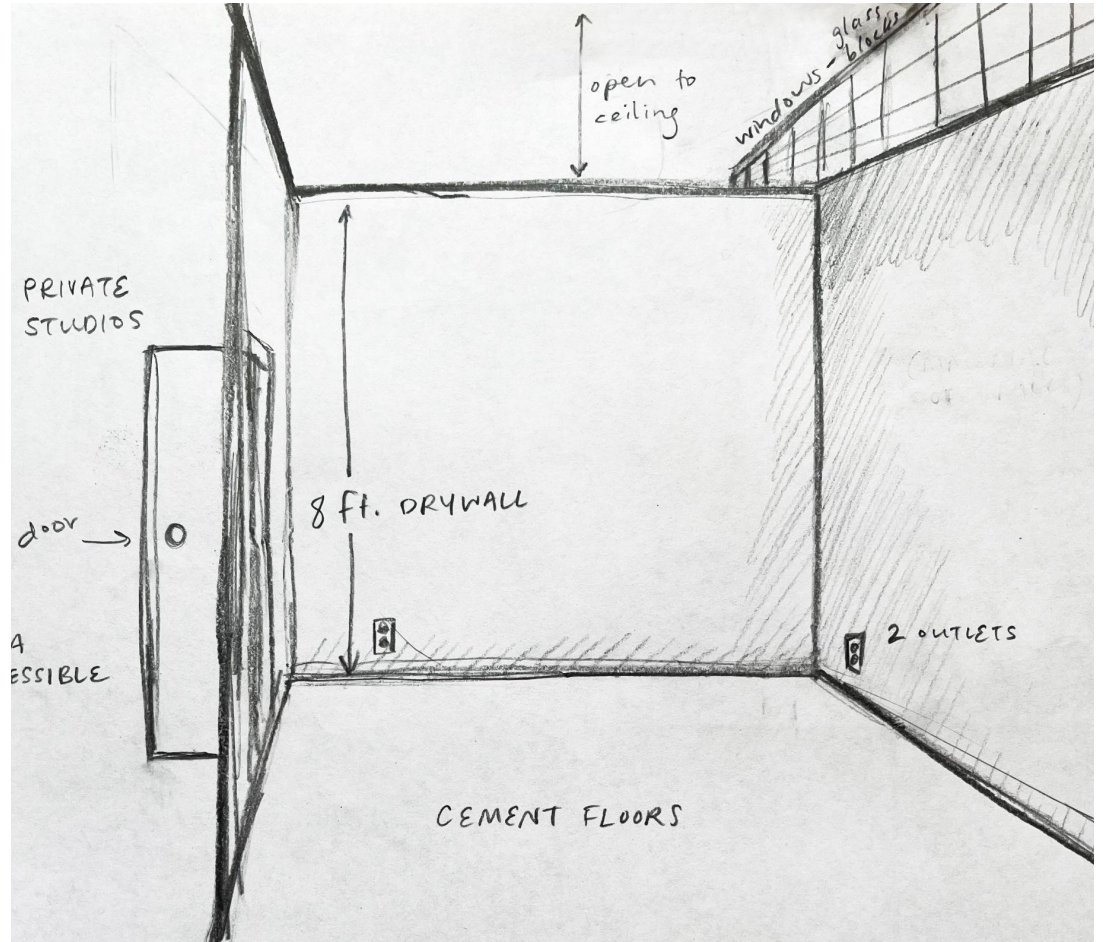
Studios will be in this room. A transom/window will be installed along the right side of the wall

## **ART STUDIOS**

- Private space with lockable door
- 8' drywall walls
- Two sets of outlets in each space

## **AMENITIES**

- Wifi included
- Utilities included
- Heat
- Windows/skylights
- ADA accessible



# AVAILABLE STUDIOS

- STUDIO 104 = 2598 SF
- ~~STUDIO 105 = 204 SF~~
- ~~STUDIO 106 = 204 SF~~
- ~~STUDIO 107 = 331 SF~~
- STUDIO 108 = 266 SF \*
- STUDIO 109 = 266 SF \*
- STUDIO 110 = 266 SF \*
- STUDIO 111 = 266 SF \*
- STUDIO 112 = 266 SF \*
- STUDIO 113 = 196 SF \*
- STUDIO 114 = 266 SF \*
- STUDIO 115 = 266 SF \*
- STUDIO 116 = 266 SF \*
- STUDIO 117 = 266 SF \*
- ~~STUDIO 118 = 266 SF \*~~
- ~~STUDIO 119 = 266 SF \*~~
- ~~STUDIO 125 = 638 SF~~
- ~~STUDIO 133 = 609 SF~~

\*walls do not go up to ceiling

## SHADING KEY:

	COMMUNAL SPACES + CIRCULATION
	COLUMBUS PRINTED ARTS CENTER DEDICATED SPACES
	SUB-LEASED STUDIOS

## AREA BREAKDOWN BY PROPOSED USE:

<b>COLUMBUS PRINTED ARTS CENTER</b>
COLUMBUS PRINTED ARTS
CPAC OFFICE 129 (INCLUDES 130, 131, 132 = 899 SF)
CPAC PRINT MAKING STUDIO 126 + 128 = 3030 SF
CPAC READING ROOM 101 = 888 SF
CPAC ART GALLERY 102 = 1654 SF
CPAC STUDIOS DARKROOM 122 = 242 SF
<b>CPAC BUSINESS USE TOTAL = 6713 SF</b>

<b>SUB LEASED ARTIST STUDIOS</b>
<b>STUDIOS - 705 ANN STREET</b>
STUDIO 104 = 2598 SF
STUDIO 105 = 204 SF
STUDIO 106 = 204 SF
STUDIO 107 = 331 SF
STUDIO 108 = 266 SF
STUDIO 109 = 266 SF
STUDIO 110 = 266 SF
STUDIO 111 = 266 SF
STUDIO 112 = 266 SF
STUDIO 113 = 196 SF
STUDIO 114 = 266 SF
STUDIO 115 = 266 SF
STUDIO 116 = 266 SF
STUDIO 117 = 266 SF
STUDIO 118 = 266 SF
STUDIO 119 = 266 SF
STUDIO 125 = 638 SF
STUDIO 133 = 609 SF
<b>SUB-LEASED STUDIOS = 7706 SF</b>

<b>COMMUNAL SPACE + CIRCULATION</b>
COMMUNAL SPACE 120 = 1060 SF
KITCHENETTE 121 + SHARED UTILITY SINKS = 235 SF
RESTROOM #1 = 54 SF
RESTROOM #2 = 90 SF
UTILITY 124 = 131 SF
UTILITY 135 = 36 SF
CIRCULATION 103 = 617 SF
CIRCULATION 136 = 1177 SF
CIRCULATION 137 = 321 SF
<b>COMMUNAL + CIRCULATION TOTAL = 3721 SF</b>
<b>FUTURE - SECOND FLOOR SPACE</b>
<b>TOTAL = 2468 SF</b>

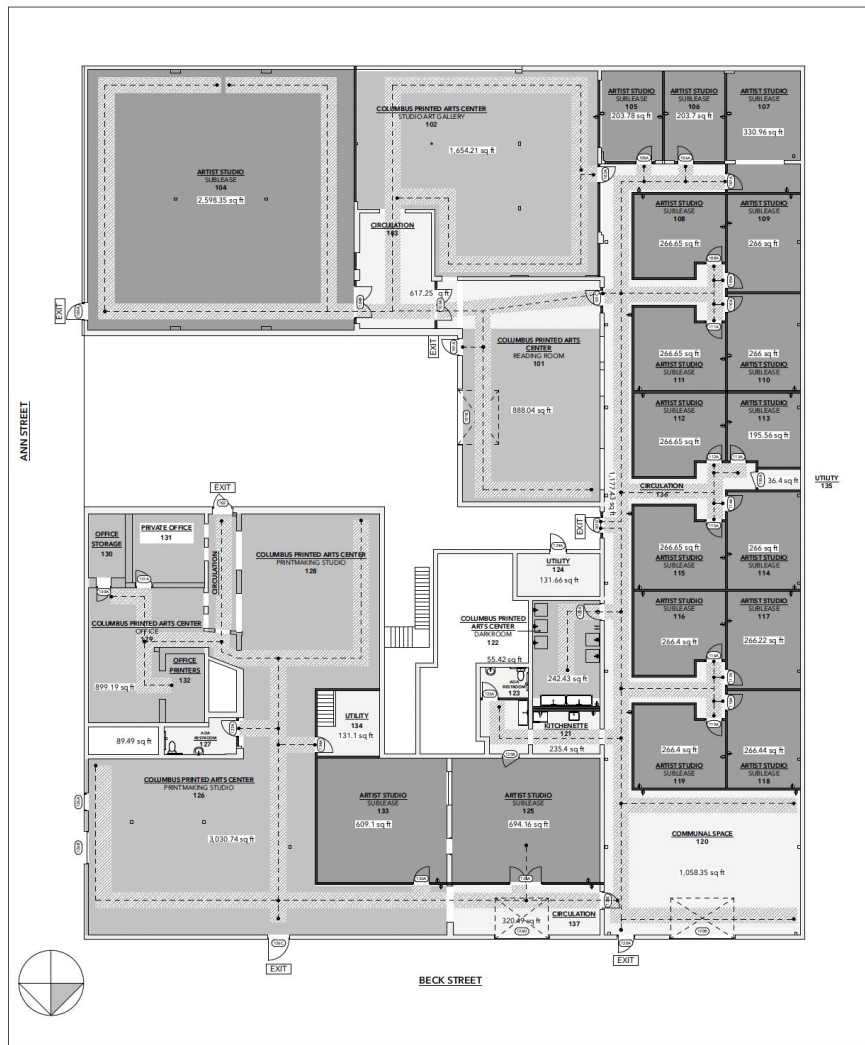
## PARKING REQUIREMENTS:

GENERAL OFFICE - CPAC, PRINTMAKING, DARKROOM, ARTIST STUDIOS + COMMUNAL SPACE - 15,598 SF
1 SPACE PER 450 SF = 35 PARKING SPACES REQUIRED
READING ROOM - 888 SF
1 SPACE PER 400 SF = 3 SPACES REQUIRED
ART GALLERY - 1654 SF
1 SPACE PER 400 SF = 5 SPACES REQUIRED
<b>TOTAL SPACE REQUIRED = 43</b>

## PARCEL A - FLOOR AREA RATIO

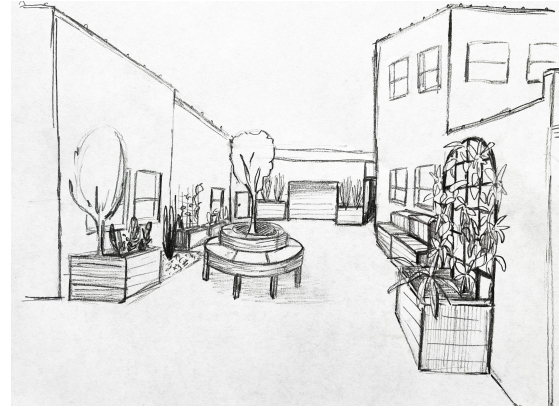
BUILDING = 22,397 SF
LOT = 23,522.4 SF
F.A.R. = 95.2%

<b>PARCEL B - PARKING</b>
LOT/PARCEL = 6314 SF



## **COMMUNAL AMENITIES**

- 1060 SF Communal seating and gathering space
- Kitchenette + utility sinks
- Single-user all-gender restroom
- Garage door loading zone
- Parking + bike rack
- Community garden / outdoor seating area
- Bookstore + gallery (access during hours of operation)
- Walking distance to Kokomo Juice and Coffee, Comune, Parsons North Brewery, Plank's Cafe



Location of future community garden

## **FAQ's**

### **What can the studios be used for?**

Studios are intended for individual artmaking practices, ideal for visual artists, writers, designers, and other creatives. They are not intended for retail use or commercial storefronts.

### **Can I hold events or public gatherings in my studio?**

Individually organized large public events, performances, or open houses are not permitted in private studios. CPAC may organize Open Studio Days.

### **Can I sell work directly from my studio?**

Yes but studios cannot operate as commercial shops or marketplaces. You're welcome to share your work with visitors but sales activity should remain low-key.

### **What materials or tools are prohibited?**

We do not allow toxic or hazardous materials, heavy-duty machinery, or any tools that create significant dust, noise, or vibration.

### **What's the environment like in the studio space?**

Our studios are located in a large, shared hall with skylights and glass block transoms (currently being installed) to provide natural light and a sense of openness. Studios are private but part of a communal working environment.

### **Are the studios open to the public on First Fridays or other art walks?**

CPAC will not be participating initially in First Fridays or other scheduled public events such as art hops or markets. That said, you're welcome to have visitors by appointment or share your work informally with guests.

### **Can I exhibit my work in the CPAC gallery?**

The CPAC gallery will be internally curated and programmed. While we love supporting our studio artists, participation in gallery programming is not guaranteed as part of a rental.

### **Are utilities and WIFI included in the rent?**

Yes

### **Is the space heated/cooled?**

We will have heat but not cooling (cooling may be added in year two or three)

**MEMBERSHIP** - for folks who are *NOT* renting a private studio:

\$150/mo All-Access Artist Membership (24/7 Access to Print Shop)

- 24/7 access to the print studios and equipment
- Free flat file and cubby storage
- 15% off classes, workshops, fine art printing and scanning services
- Participation in Annual Members Exhibition & Print Market
- Invitations to Artist Members-only events such as exhibitions, critique nights, and artist statement workshops

\$50/mo Artist Membership (Access to Print Shop during open hours, Thurs-Sun, 10am-6pm, plus these perks:

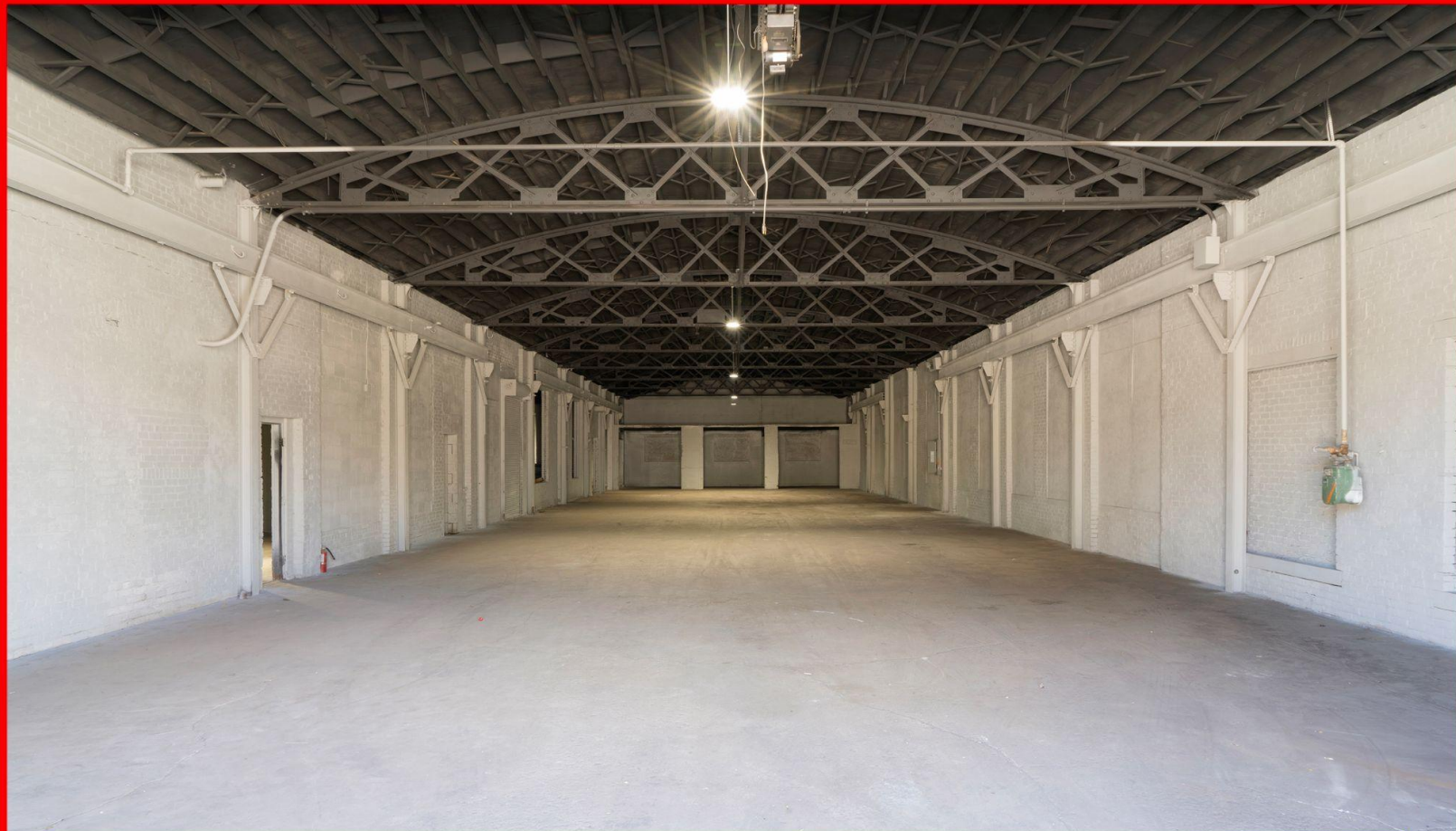
- Access to the print studios, equipment and storage during open hours
- Participation in Annual Members Exhibition & Print Market
- 15% off classes, workshops, fine art printing and scanning services
- Participation in Annual Members Exhibition & Print Market
- Invitations to Artist Members-only events such as exhibitions, critique nights, and artist statement workshops

\$10/mo Sustaining Supporter Membership (no studio access):

- Participation in Annual Members Exhibition & Print Market
- 10% off classes, workshops, fine art printing and scanning services
- Invitations to Artist Members-only events, i.e. critique nights and artist statement workshops



our new location at 705 Ann St



**fifteen artist studios available July 1**



the bookspace and classroom



expanded print shop



2000 sf gallery space



**beautiful future community garden**