

How to find olympic court...

At Junction 4 of the M55...

- Follow the A583 towards Preston.
- Take the 4th turning at the B&Q roundabout
- Go straight over the next two roundabouts.
- Take the 3rd turning at next roundabout.
- Olympic Court office and business park is on the right.



For further information about this exciting development contact H or J Staals:

t: 01253 697 384 m: 07779 991 240 m: 07970 663 878 e: whitehills@henco.co.uk w: www.henco.co.uk



Misrepresentation Act 1967. The agents for themselves and for vendors or lessors of these properties whose agents they are give notice that: (i) the particulars are set out as a general outline only for the guidance of intended purchasers or lessees, and do not constitute part of, an offer or contract; (ii) all descriptions, dimensions, reference to condition and necessary permissions for use and occupation, and other details are given without responsibility and any intending purchasers or tenants should not rely on them as statements or representations of fact but must satisfy themselves by inspection or otherwise as to the correctness of each of them; (iii) no person in the employment of the agents has any authority or give any representation or warranty in relation to this property.

olympic court

whitehills business park, blackpool

New high quality
office and business
development
for sale and to let



2002 Civic Conservation Awards for
Good Design in the Environment



HENCO
INTERNATIONAL LIMITED

olympic court

whitehills business park, blackpool

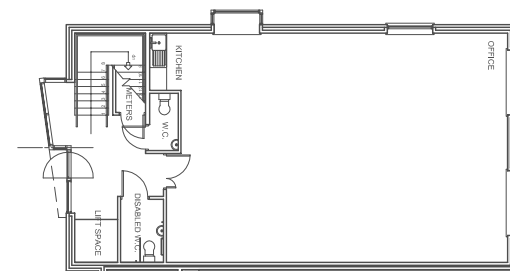
New high quality
office and business
development
in Blackpool



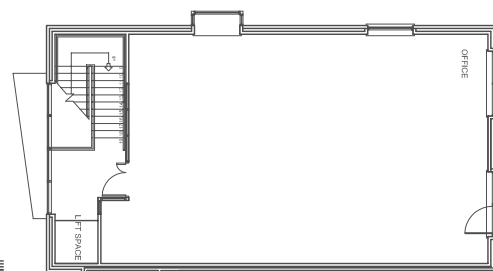
Key features

- Facing brickwork & tiled pitched roof
- Aluminium powder coated window frames
- Double glazed windows
- Glazed feature bay on ground floor
- Flush doors veneer faced
- Brushed aluminium internal ironmongery
- 3 compartment skirting trunking to office areas
- Kitchenette area
- Gas fired wet central heating system
- Carpeting to office areas
- Tiled reception area
- Suspended ceilings
- Category 2 lighting
- Smoke/fire detectors
- Comfort cooling available
- Security system
- Extensively landscaped

Office suites from 1,050 sq ft (98 sq m)
Individual office units from 2,100 sq ft to 30,000 sq ft
Business units from 2,000 sq ft to 11,000 sq ft



Office Unit - Ground floor plan ▲



Office Unit - First floor plan ▲



Office Unit - Front elevation ▲



HENCO
INTERNATIONAL LIMITED