

woodlands
business park



Milton Keynes

Poplar House

36,086ft²

Grade A new office building

Approximate IPMS



Poplar House: specification

- Three pipe VRF air conditioning
- Fully accessible and carpeted raised floor – 150mm void
- 9.0m x 7.5m structural grid
- 1.5m planning grid
- 2.7m to 2.85m clear floor to ceiling height
- Designed for occupancy of 10m² per person

- Two 8 or 13 person hydraulic lifts
- Suspended ceiling with perforated metal tiles
- LG7 compliant LED lighting with PIR sensors
- Parking at 1:30m² GEA
- BREEAM target ‘Very Good’
- EPC target rating A/B

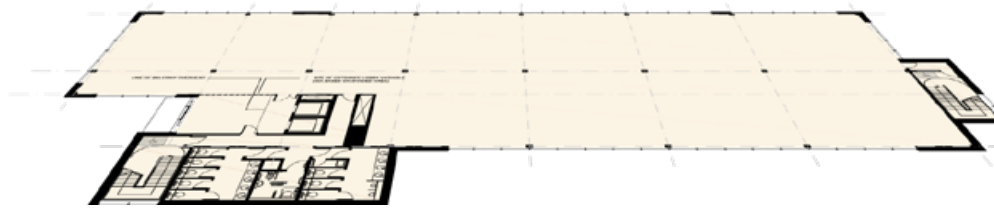
Floor areas (Approximate IPMS)

| | | |
|--------------|---------------------------|-----------------------------|
| Ground Floor | 827.2m ² | 8,904ft ² |
| First Floor | 827.8m ² | 8,910ft ² |
| Second Floor | 848.8m ² | 9,136ft ² |
| Third Floor | 848.8m ² | 9,136ft ² |
| Total | 3,352m² | 36,086ft² |

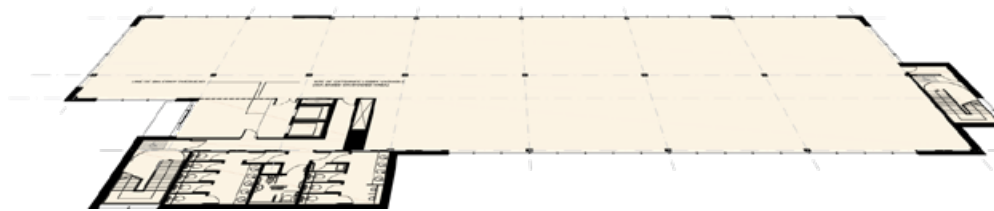
Car parking

| | |
|----------------|-----|
| Parking spaces | 140 |
|----------------|-----|

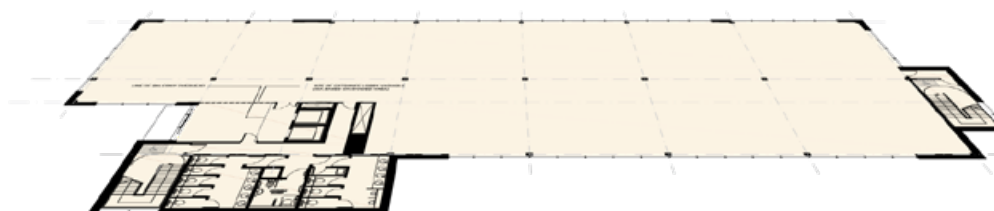
Third floor



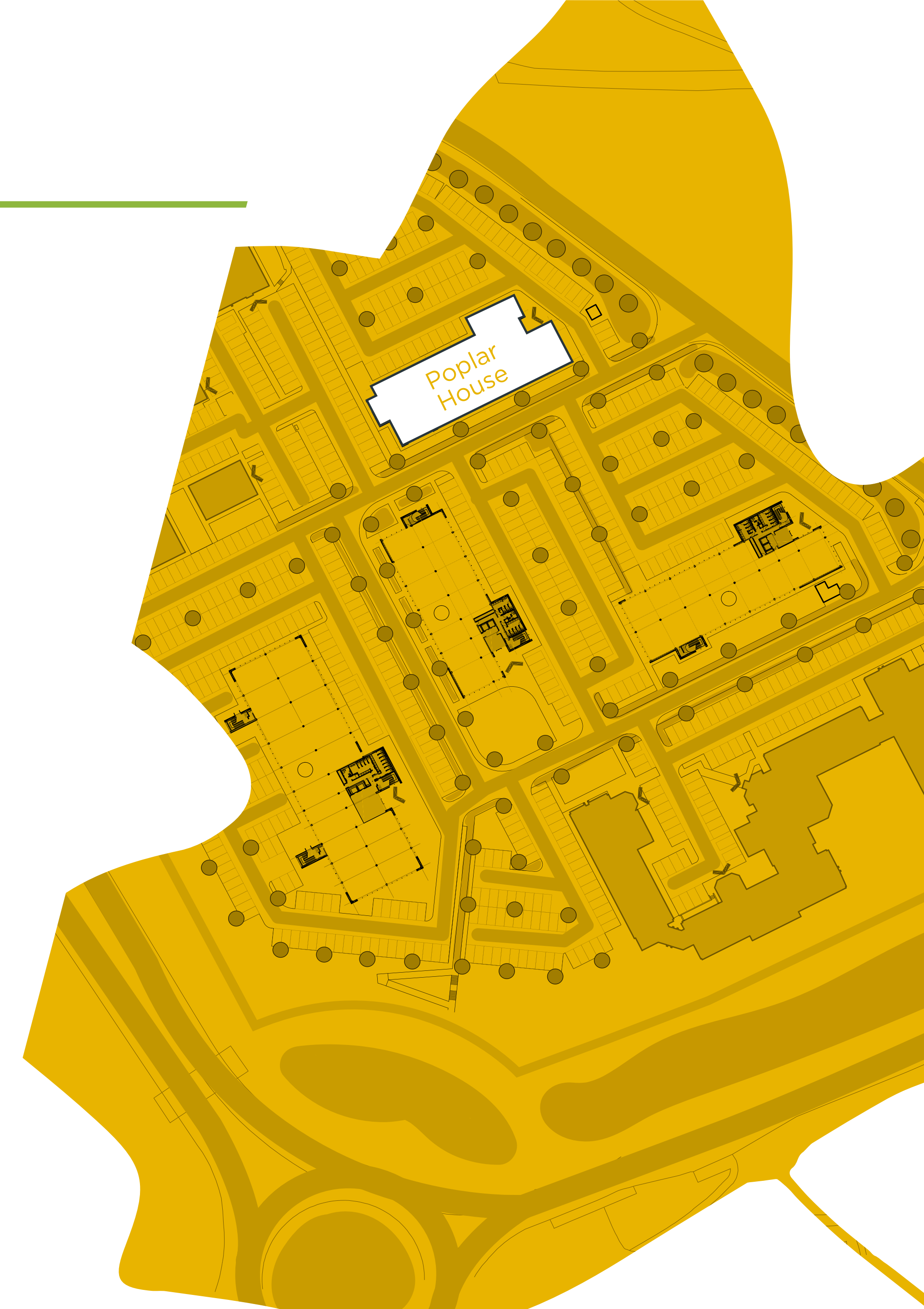
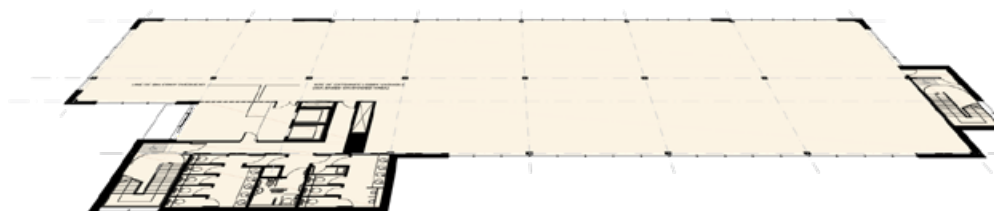
Second floor



First floor



Ground floor



For more information



Ian Leather
07860 612242
ianleather@brayfoxsmith.com



Tom Harker
tharker@lsh.co.uk

woodlandsmiltonkeynes.co.uk

Postcode for sat nav: MK14 6EY

Important Notice: These particulars do not form part of any offer or contract and should not be relied upon as statements or representatives of fact. Lambert Smith Hampton have no authority to make or give in writing or verbally any representation or warranties in relation to the property. Any areas of measurements or distances are approximate. The text, photographs and plans are for guidance only and are not necessarily comprehensive. No assumptions should be made that the property has all necessary planning, building regulation or other consents. Lambert Smith Hampton have not carried out a survey, nor tested the services, appliances or facilities. Purchasers must satisfy themselves by inspection or otherwise. In the interest of Health & Safety, please ensure that you take due care when inspecting the property. May 2018.

