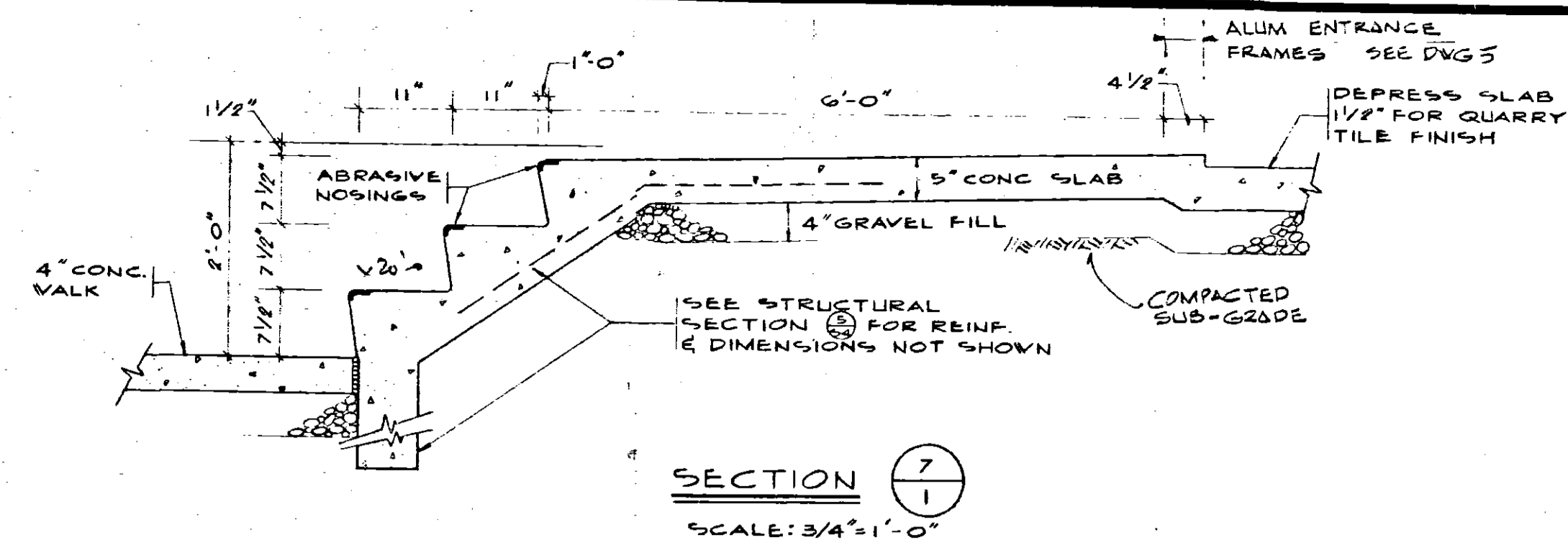


GENERAL NOTES

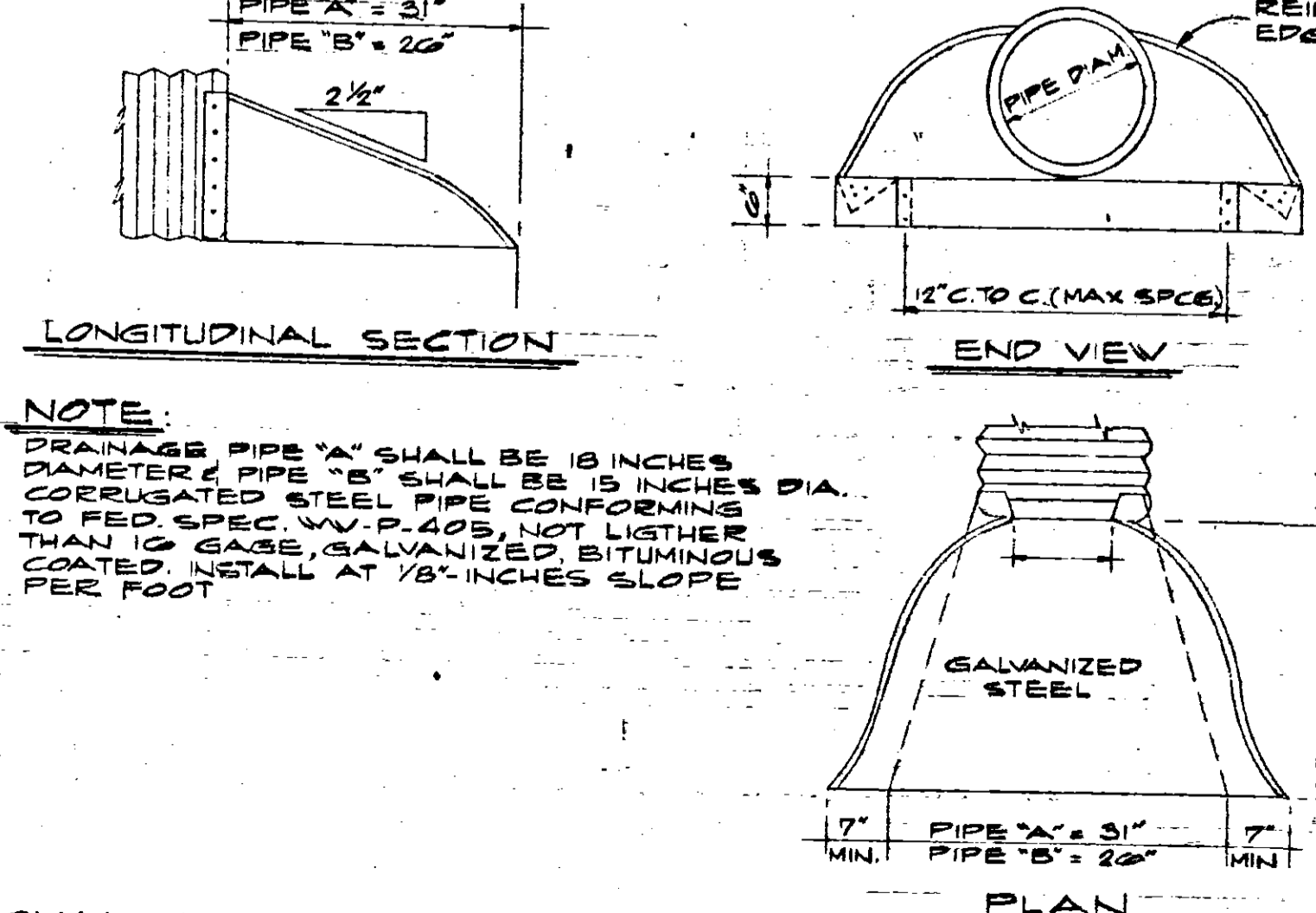
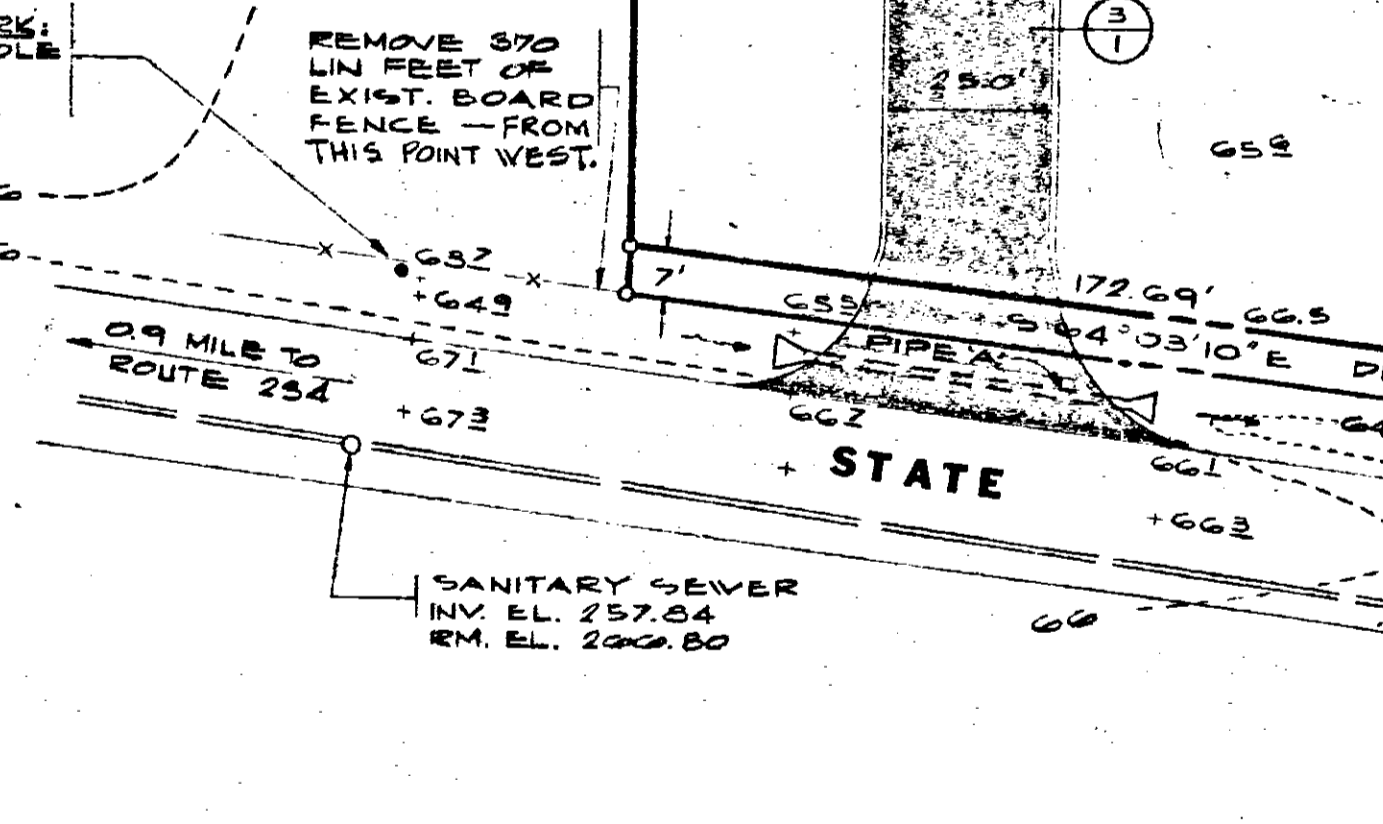
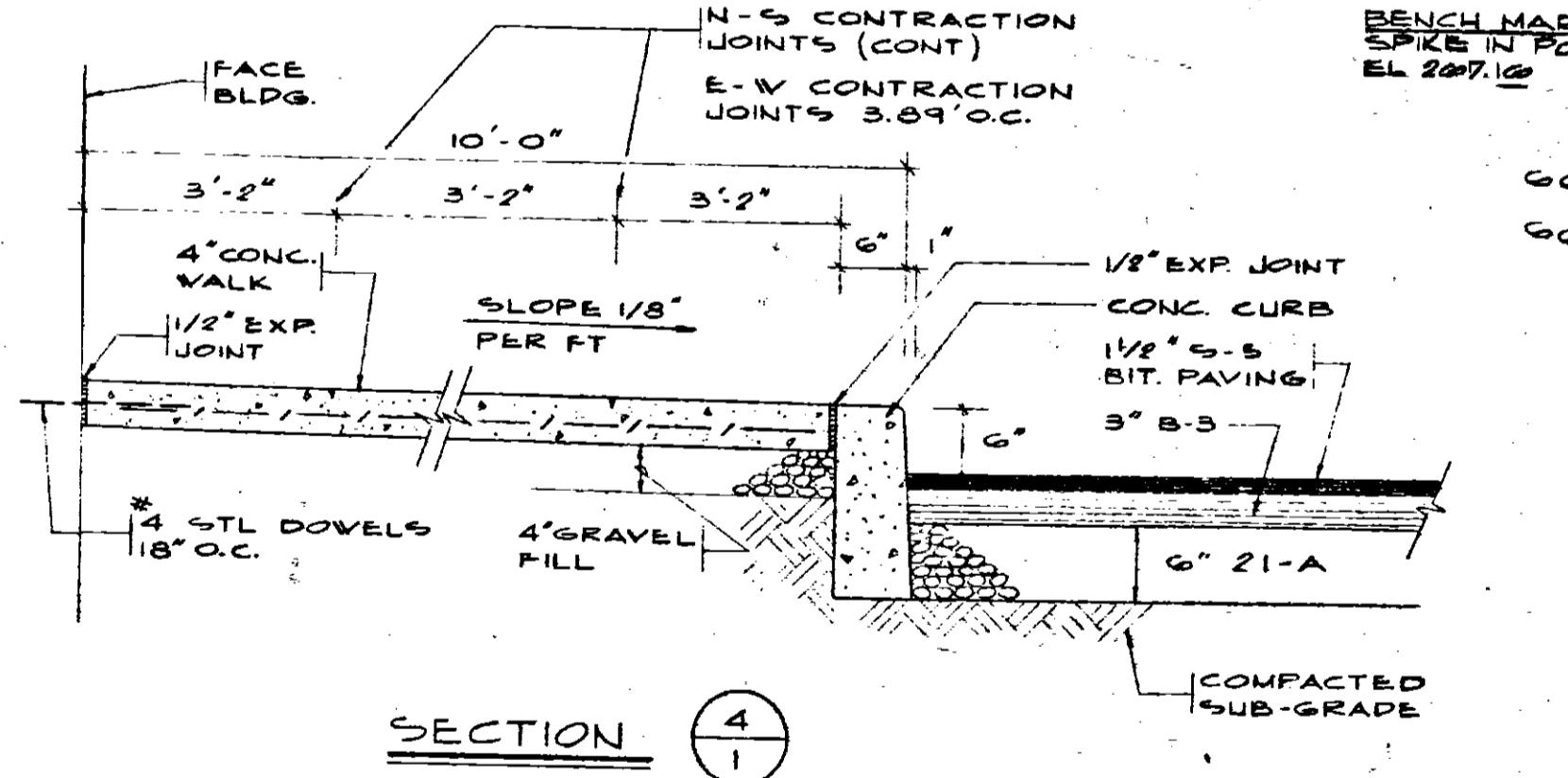
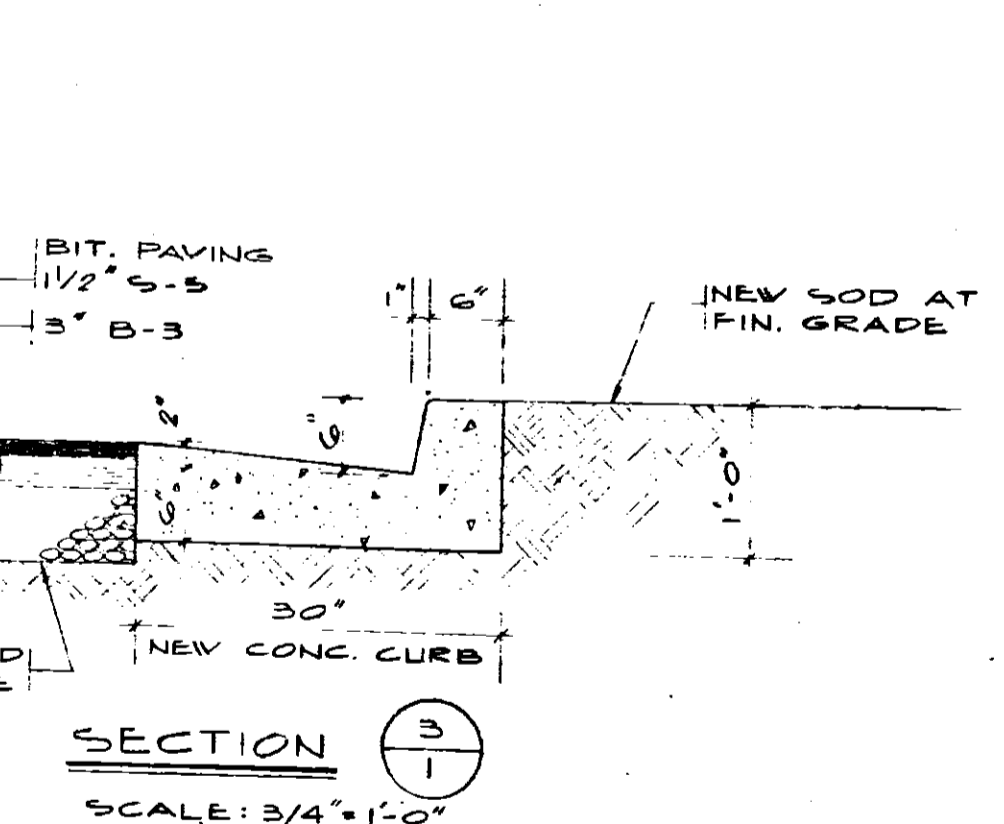
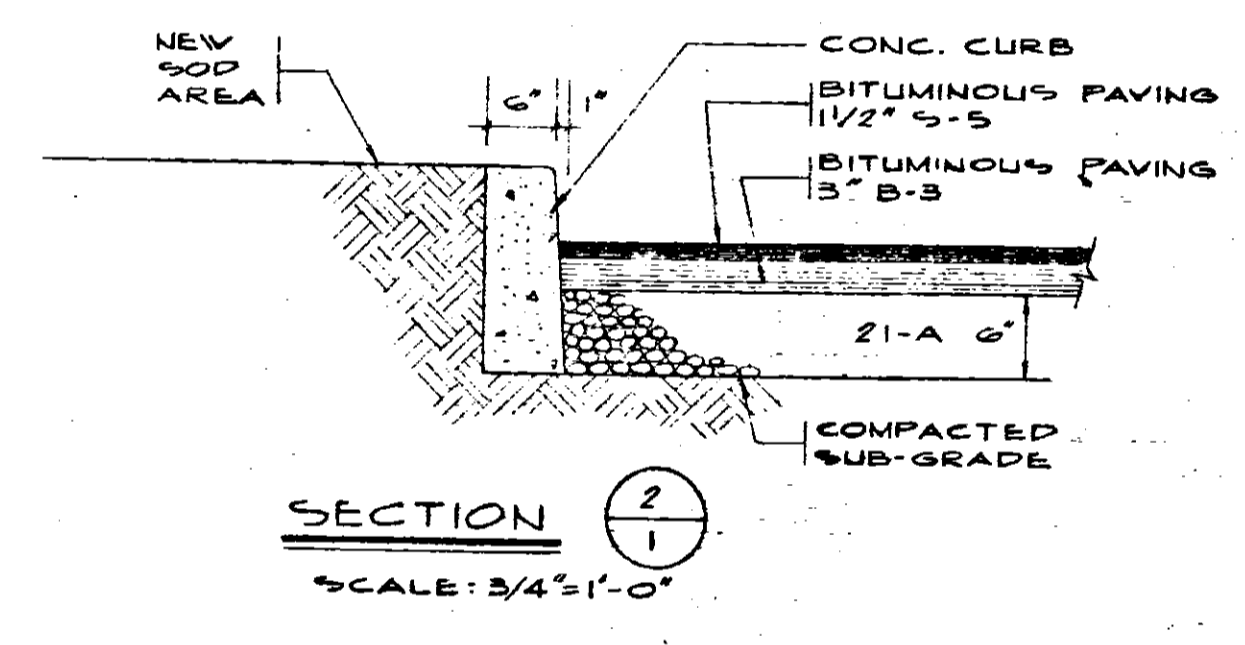
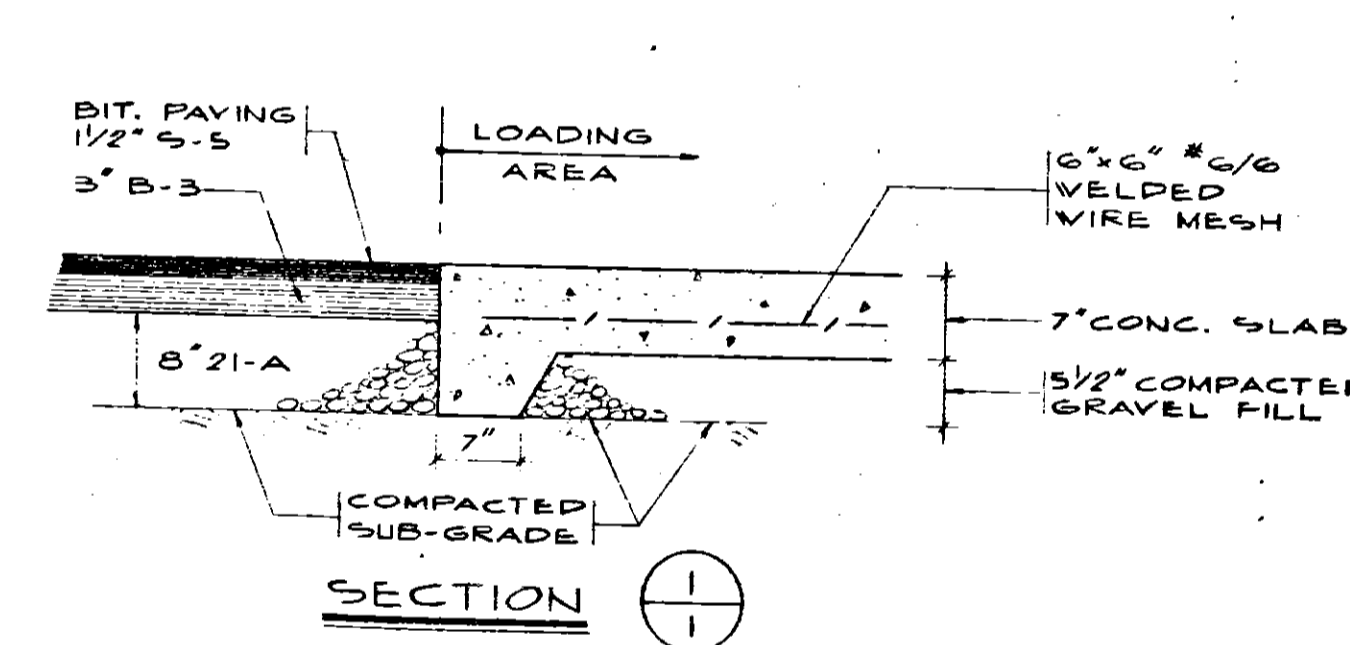
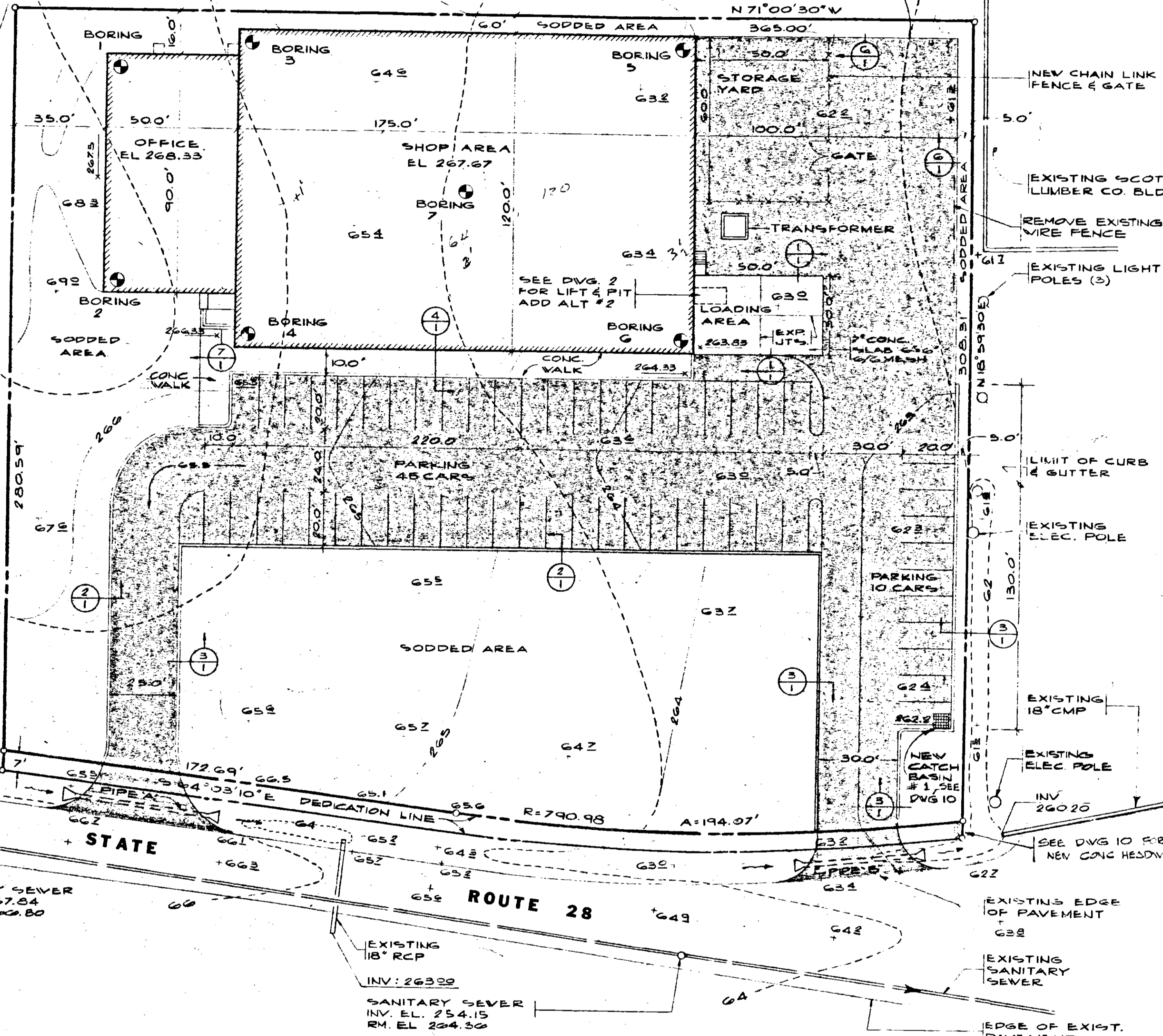
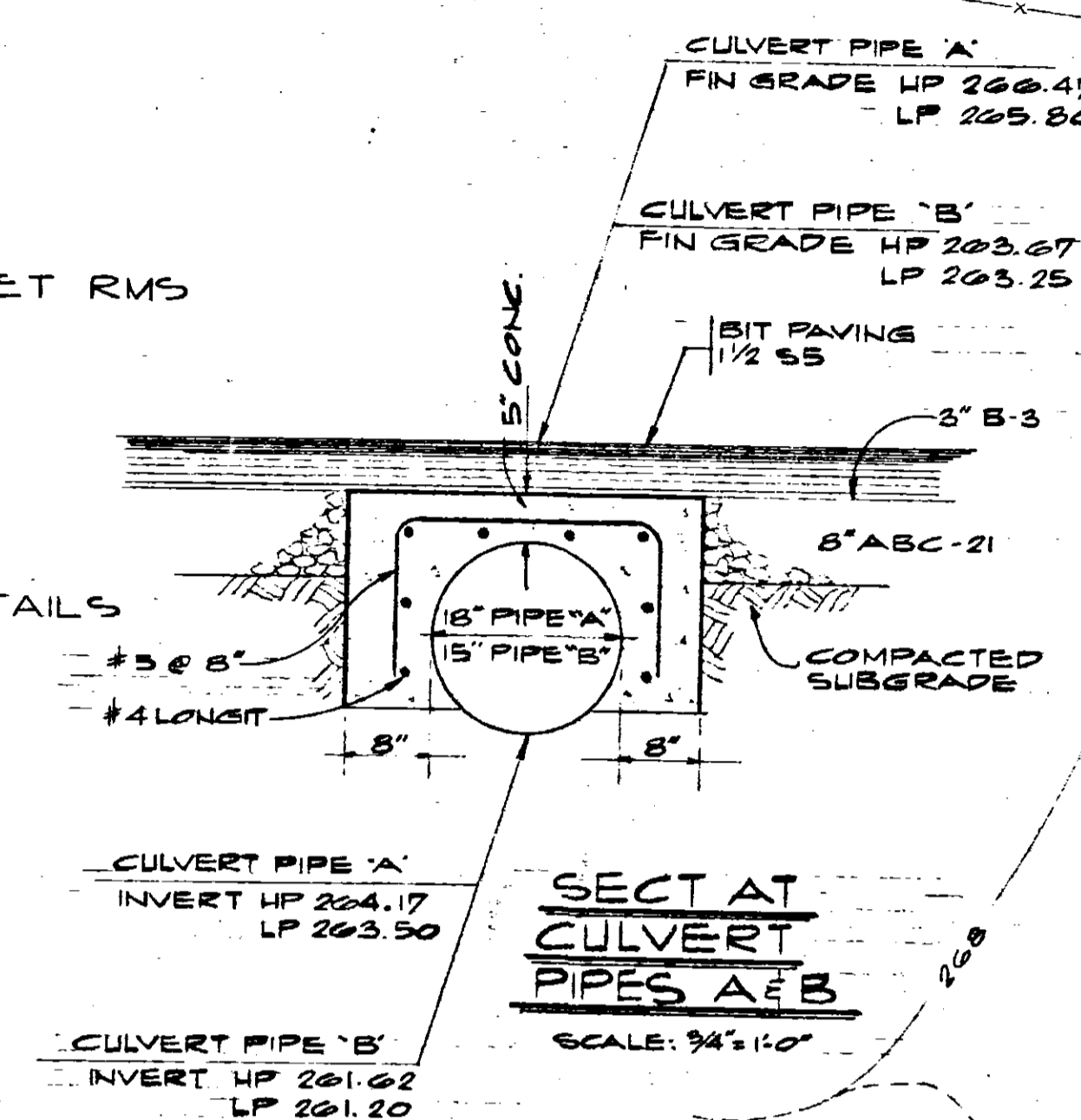
- TOPOGRAPHIC SURVEY INFORMATION SHOWN IS TAKEN FROM SURVEY PLAT PREPARED BY ROSS & FRANCE, LTD. CIVIL ENGRS. & LAND SURVEYORS, MANASSAS, VIRGINIA DATED 30 NOV. 1976
- SOIL BORINGS AS INDICATED (B) WERE DRILLED BY LAW ENGR. TESTINI'S CO. ON 20 NOV. 1976 AND A COPY OF THE RECORDED PENETRATION RESISTANCE IS BOUND IN THE EXCAVATION SECTION OF THE SPECIFICATIONS.
- NEW CATCH BASINS SHOWN CB-1 & CB-2 SHALL CONFORM TO VIRGINIA DEPT. OF HWYS & TRANSPORTATION STANDARDS. SEE DWG. NO 10 FOR PIPE CONNECTIONS.
- GENERAL CONTRACTOR SHALL INSTALL 4 GUARD POSTS AT CORNERS OF CONCRETE TRANSFORMER PAD. POSTS SHALL BE 8" STANDARD STEEL PIPE 5 FT. ABOVE FINISH PAVING, EMBEDDED IN CONCRETE 4 FT. BELOW GRADE. SEE PLAN ON DRAWING 17.

- (7) INDICATES DETAIL OR SECTION NUMBER (IDENTIFICATION)
- (1) INDICATES DWG NUMBER WHERE DETAIL IS DRAWN



LIST OF DRAWINGS

- | DWG. NO | ARCHITECTURAL |
|------------|---|
| 1 | SITE PLAN AND DETAILS |
| 2 | FLOOR PLAN AND FINISH SCHEDULE |
| 3 | OFFICE FLOOR PLAN AND DETAILS |
| 4 | ELEVATIONS AND SECTIONS |
| 5 | DOOR AND FRAME SCHEDULE AND SECTIONS |
| STRUCTURAL | |
| 6 | FOUNDATION PLAN AND COLUMN SCHEDULE |
| 7 | ROOF FRAMING PLAN AND MEZZ FRAMING AT SHOP TOILET RMS |
| 8 | STRUCTURAL SECTIONS AND DETAILS |
| 9 | STRUCTURAL NOTES AND TYPICAL DETAILS |
| MECHANICAL | |
| 10 | SITE PLAN, SYMBOLS, DETAILS AND SCHEDULES |
| 11 | OFFICE AREA FLOOR PLAN, MECH. DIAGRAMS |
| 12 | SHOP AREA FLOOR PLAN, MECH. DIAGRAMS AND DETAILS |
| 13 | ROOF PLAN, MECHANICAL AND ELEVATIONS |
| ELECTRICAL | |
| 14 | SYMBOLS, FIXTURE SCHED., SITE PLAN AND DETAILS |
| 15 | OFFICE LIGHTING AND POWER PLANS |
| 16 | OFFICE AND SHOP AREA LIGHTING PLAN, DETAILS |
| 17 | OFFICE AND SHOP AREA POWER PLAN, NOTES |
| 18 | ROOF PLAN, ELECTRICAL |
| 19 | PANEL SCHEDULE |
| 20 | POWER RISER DIAGRAM AND NOTES |



NOTE:
DRAINAGE PIPE 'A' SHALL BE 18 INCHES DIAMETER & PIPE 'B' SHALL BE 15 INCHES DIA. CORRUGATED STEEL PIPE CONFORMING TO FED SPEC. W/ 1.20\"/>

AREA COMPILATION (GROSS)

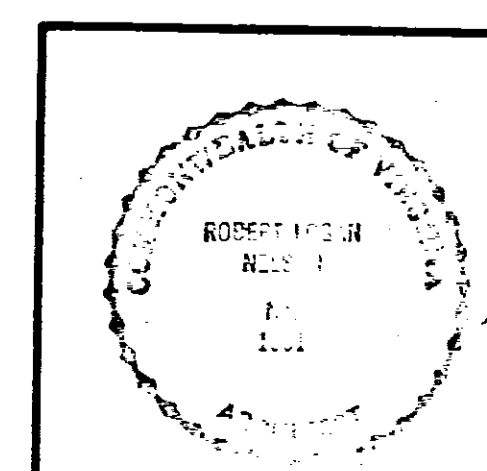
LAND AREA	109,000 SQ FT
DEDICATION	2,565 SQ FT
OFFICE AREA	4,500 SQ FT
SHOP AREA	21,000 SQ FT
EXT. STOR. YARD	3,000 SQ FT
LOADING 2 SPACES @ 750	1,500 SQ FT
PARKING 55 SPACES @ 200	11,000 SQ FT

SITE PLAN
SCALE: 1"=30'

- LEGEND:**
- PROPERTY LINE
 - - - EXISTING CONTOURS (2' INTERVALS)
 - NEW CONTOURS (1' INTERVAL)
 - + G52 EXISTING SPOT ELEVATIONS
 - 266.17 NEW SPOT ELEVATIONS
 - NEW CONC CURB & GUTTER
 - BRICK BITUMINOUS PAVING
 - CONCRETE MASONRY UNITS (CMU)
 - CONCRETE

TYPICAL DRIVEWAY CONNECTION @ RT. 28
SCALE: 3/4"=1'-0"

- REMOVAL NOTES**
- REMOVE EXIST. WOOD AND WIRE FENCE ADJACENT TO FRONT PROPERTY LINE.
 - REMOVE EXIST. EVERGREEN TREES NEAR THE FRONT PROPERTY LINE.
 - LOCATION OF EXIST. POWER POLES NEAR THE FRONT PROPERTY LINE ARE SHOWN ON DWG. NO 14.
 - REMOVE EXIST WIRE FENCE ADJACENT TO WEST PROPERTY LINE



OFFICE & INDUSTRIAL BUILDING
GEORATOR CORPORATION
MANASSAS, VIRGINIA

SITE PLAN AND DETAILS

MAR 1 1977
DEC 23 1976

NELSON - BLITZ & ASSOCIATES
ARCHITECTS - ENGINEERS - PLANNERS
4701 SANGAMORE ROAD WASHINGTON, D.C. 20016

1