

FOR LEASE

1233-1235 ROUND TABLE

+/- 24,912 SQUARE FOOT

DUPLEX OFFICE/WAREHOUSE

Dallas, TX 75247



PROPERTY FEATURES

- + +/- 2,897 SF Office,
- + +/- 593 SF Break Room
- + +/- 1.47 Acres
- + Four (4) dock doors with levelers
- + One (1) concrete ramp
- + +/- 16' clear height
- + Cross dock loading
- + Fenced truck courts



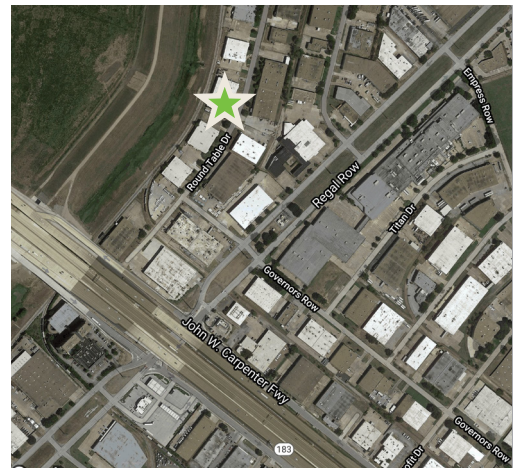
CONTACT US

DAVID EASTERLING

First Vice President

+1 214 979 6339

david.easterling@cbre.com

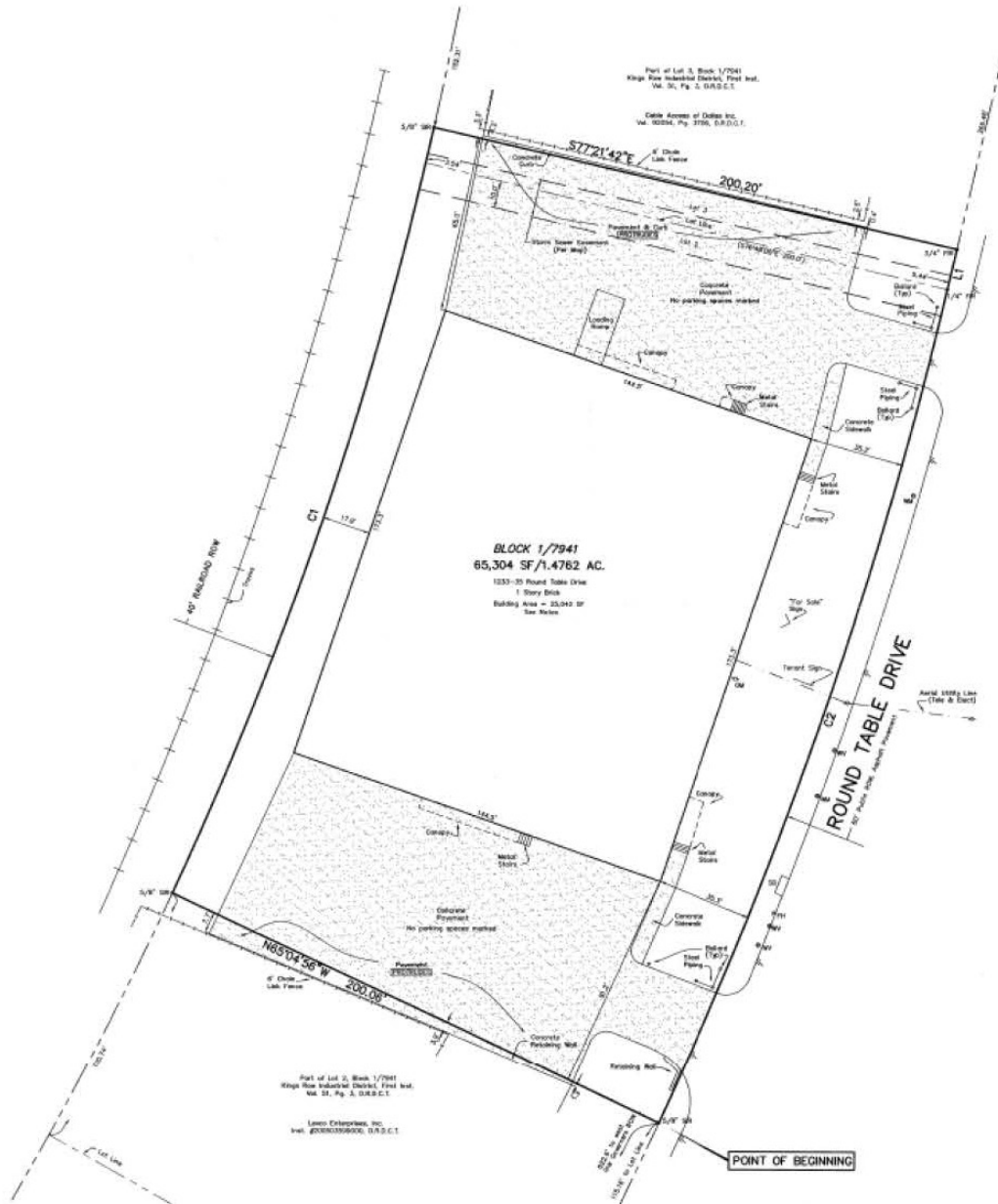


www.cbre.us/dfw

CBRE

FOR LEASE

1233-1235 ROUND TABLE DRIVE



© 2019 CBRE, Inc. All rights reserved. This information has been obtained from sources believed reliable, but has not been verified for accuracy or completeness. You should conduct a careful, independent investigation of the property and verify all information. Any reliance on this information is solely at your own risk. CBRE and the CBRE logo are service marks of CBRE, Inc. All other marks displayed on this document are the property of their respective owners, and the use of such logos does not imply any affiliation with or endorsement of CBRE. Photos herein are the property of their respective owners. Use of these images without the express written consent of the owner is prohibited.

FOR LEASE

1233-1235 ROUND TABLE DRIVE

