

Guilford County Courthouse



Speckman Commercial Properties

109 Rockspring Road High Point, NC 27262 | 336-887-3600

Old Courthouse Furniture Showroom



258 S Main St High Point, NC 27260

Property Type	Retail	Building Size	15,622 SF	Construction	
Property Subtype	Freestanding	Office SF		Class	
Zoning	CB	Industrial SF		County	Guilford
Building Status	EXISTING	Retail SF		Tax ID/APN	7800234635
Occupancy Type	Single-Tenant	Floors	3	Parking Ratio	
Year Built	1937	Typical Floor SF		Elevators	
		Land Size	0.51 Acres		

Retail For Lease

Floor / Suite	Floor 1-3	Date Available	Now	Date Revised	04/29/2020
Available SF	15,622 SF	NNN Expenses		Tenant	
Lease Rate	\$23.00 Annual/SF	TI Allowance			
Lease Type	Modified Gross				

Located on the corner of Main & Green, this beautiful "National Historic" building puts you in the heart of the Furniture Market District. The showroom is in excellent condition and is move-in ready. It has approximately 15,622 square feet over three floors (with one dual-use freight/passenger elevator), a private parking lot with 25 marked spaces and room for three additional vehicles. Incredible visibility and a high amount of showroom traffic. Offered for lease at \$23 per square foot. Minimum 1-year lease, Maximum 4-year lease. Tenant pays showroom tax, all utilities, etc. Contact us for more details on terms. (Please note Tax Records show 16,848 sf. That is different than appraiser's information used above. Buyer to confirm size.)



Todd Peacock
 todd.peacock@gmail.com
 336-689-0360

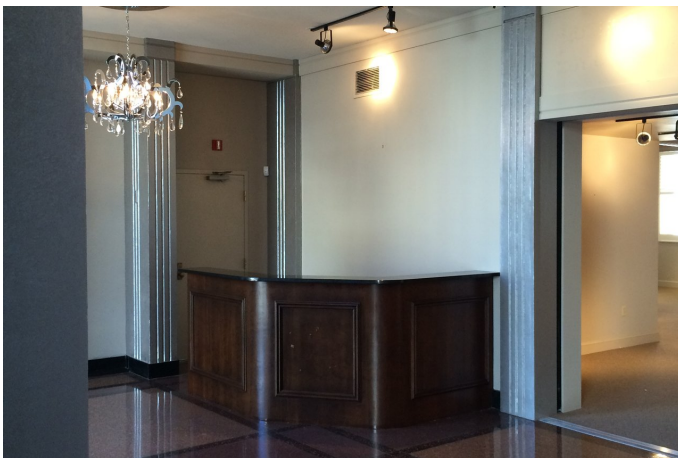


Guilford County Courthouse



Speckman Commercial Properties

109 Rockspring Road High Point, NC 27262 | 336-887-3600



Todd Peacock
todd.peacock@gmail.com
336-689-0360



This information supplied herein is from sources we deem reliable. It is provided without any representation, warranty or guarantee, expressed or implied as to its accuracy. Prospective Buyer or Tenant should conduct an independent investigation and verification of all matters deemed to be material, including, but not limited to, statements of income and expenses. Consult your attorney, accountant, or other prof. advisor.