

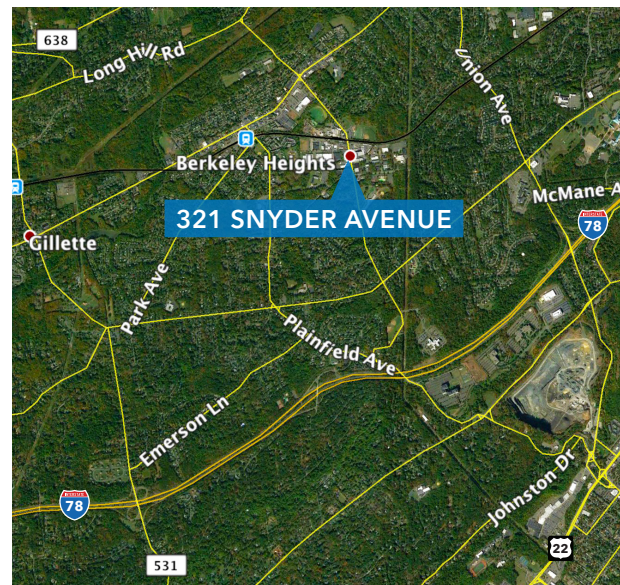
FOR SALE/LEASE
OFFICE/FLEX/MEDICAL/SCHOOL/CHILD CARE

321 SNYDER AVENUE

BERKELEY HEIGHTS, NJ



TOTAL SIZE	± 11,148 SF
OFFICE SIZE	± 4,650 SF
WAREHOUSE SIZE	± 6,498 SF
AVAILABILITY	Immediate
CEILING HEIGHT	± 12'
HEAT	Gas Hot Air
LOADING	1 Tailgate (±8' x 8') 1 Drive-In (±8' x 8')
SPRINKLER	None
COMMENTS	Renovated in 1997
ZONING	Light Industrial
TAXES	\$2.39 PSF
LEASE PRICE	Call for Pricing
SALE PRICE	Call for pricing



LEASING INFORMATION

Jeffrey Furey

973.947.9242

jeffrey.furey@transwestern.com



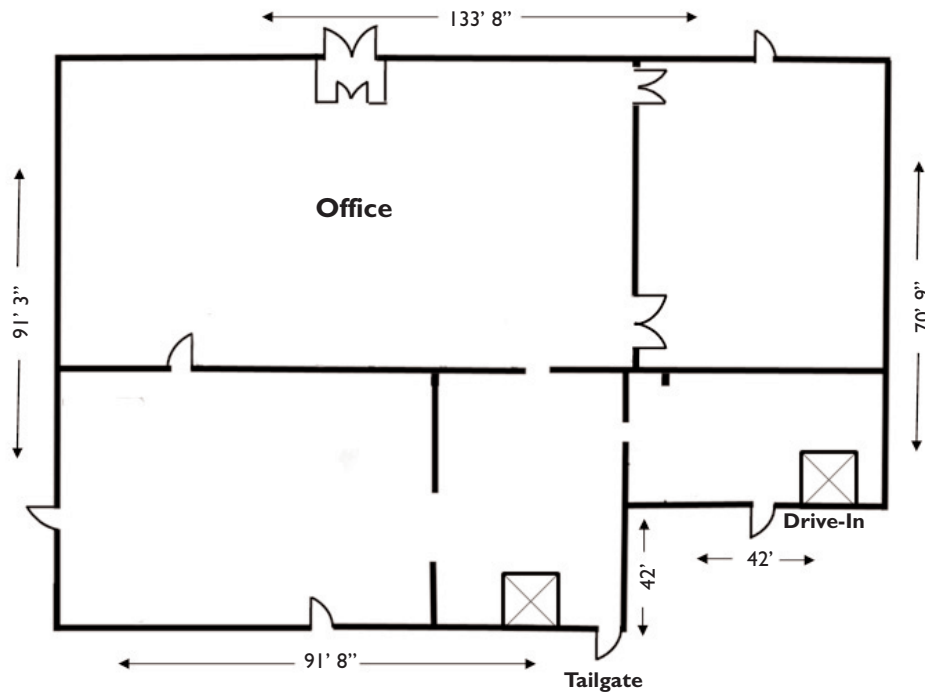
300 Kimball Drive, 1st Floor, Parsippany, NJ 07054
T 973.947.9200 F 973.947.9199 www.transwestern.com

The information provided herein was obtained from sources believed reliable; however, Transwestern makes no guarantees, warranties or representations as to the completeness or accuracy thereof. The presentation of this property is submitted subject to errors, omissions, change of price or conditions, prior sale or lease, or withdrawal without notice. Copyright © 2016 Transwestern.

FOR SALE/LEASE
OFFICE/FLEX/MEDICAL/SCHOOL/CHILD CARE

321 SNYDER AVENUE

BERKELEY HEIGHTS, NJ



EXCLUSIVE LISTING

LEASING INFORMATION

Jeffrey Furey

973.947.9242

jeffrey.furey@transwestern.com



300 Kimball Drive, 1st Floor, Parsippany, NJ 07054
T 973.947.9200 F 973.947.9199 www.transwestern.com

The information provided herein was obtained from sources believed reliable; however, Transwestern makes no guarantees, warranties or representations as to the completeness or accuracy thereof. The presentation of this property is submitted subject to errors, omissions, change of price or conditions, prior sale or lease, or withdrawal without notice. Copyright © 2016 Transwestern.