

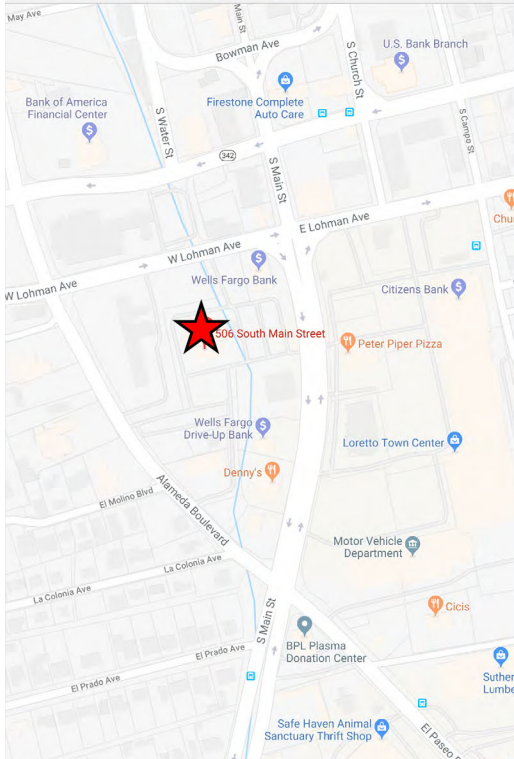
OFFICE SPACE FOR LEASE

506 SOUTH MAIN ST. THE LAS CRUCES TOWER

DOWNTOWN LAS CRUCES, NEW MEXICO



LOOPNET.COM/LID/13080268



PROPERTY DESCRIPTION

LOCATION 506 South Main St. *The Las Cruces Tower*

AVAILABLE SPACE 793 RSF - 8,529 RSF

Basement Space Available as well

LEASING RATE **NEGOTIABLE - FULL SERVICE GROSS**



- FULL SERVICE building, including all utilities paid and janitorial service 5 days per week
- On-site leasing, management & maintenance
- Great views of the Organ Mountains and surrounding area
- USPS drop boxes on-site
- Abraham's Restaurant on 4th floor
- Therapy for Hair & Skin in the basement
- 10 minutes from Interstates 10 & 25
- 1 minute from Downtown Las Cruces
- 10 minutes from New Mexico State University
- Many restaurants and retailers in the vicinity

LOCATION DETAILS

FOR ADDITIONAL INFORMATION CONTACT

Terri Lynn Porsberg ph. 575.305.5563 fx. 888.493.3080

Best Real Estate Management - New Mexico, LLC 506 South Main St., Las Cruces NM 88001

tporsberg@bestcompanies.com . www.bremep.com

Best Real Estate Management makes no representation as to the accuracy of the information contained in this package. All information contained herein has been obtained from sources deemed reliable and is subject to errors, omissions, change of terms and conditions, prior sale, lease or financing or withdrawal without notice.