



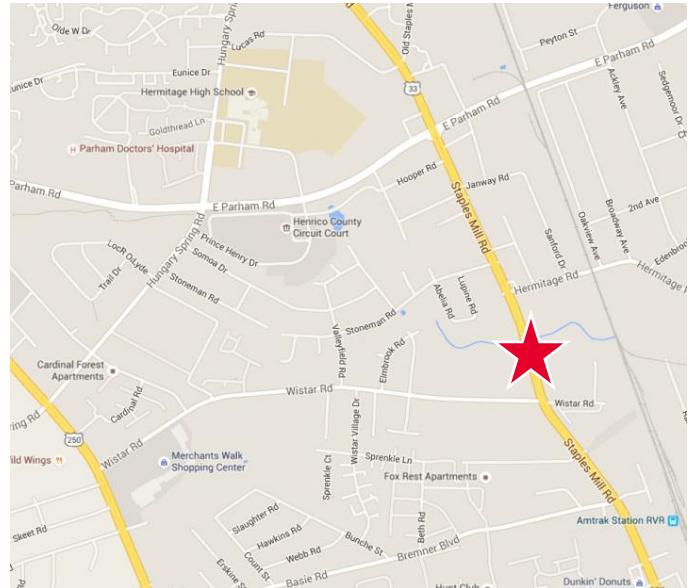
1,233– 3,645 SF

5% Upfront Broker Bonus

Specifications

Retail/Office/Showroom

- Up to 3,645 contiguous SF available fronting Staples Mill Rd.
- Excellent visibility for retail exposure
- Easy two-way access
- 38,000 VPD



Demographics	1 Mile	3 Mile	5 Mile
Total Population	11,473	83,319	211,938
Average HH Income	\$59,595	\$72,681	\$93,396
Daytime Population	8,327	75,471	152,741

For more information, contact:

DAWN M. CALABRESE, CCIM
Vice President
804 697 3406
dawn.calabrese@thalhimer.com

Thalhimer Center
11100 W. Broad Street
Glen Allen, VA 23060
www.thalhimer.com

RETAIL/OFFICE/WAREHOUSE FOR LEASE
Wistar Center

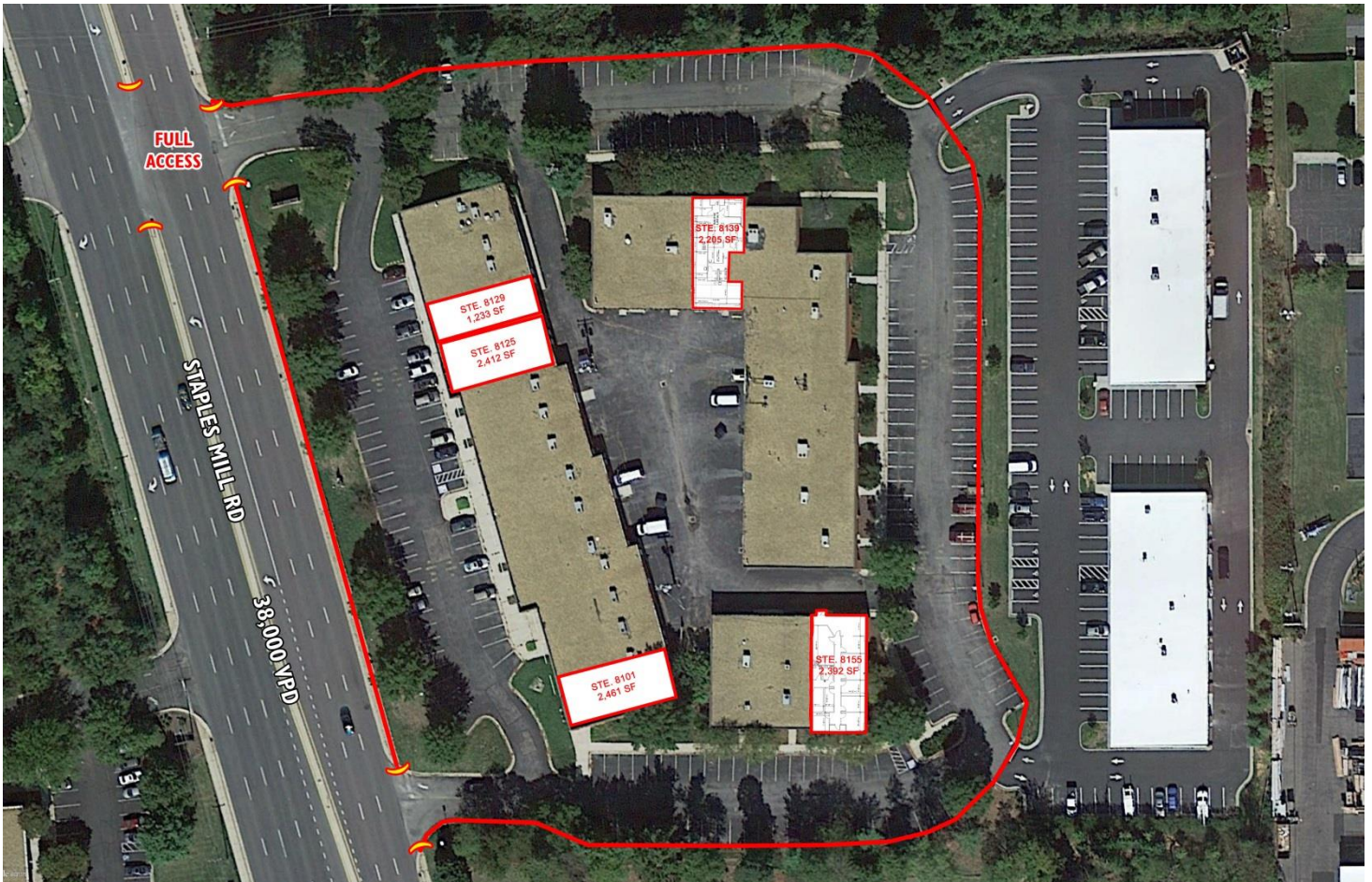
8101-8157 Staples Mill Rd. | Henrico County, VA



Specifications

Office/Warehouse/Flex

- 1,233 - 2,392 SF available
- Drive-in loading
- Centrally located
- Floor to ceiling glass



For more information, contact:

DAWN M. CALABRESE, CCIM
Vice President
804 697 3406
dawn.calabrese@thalhimer.com

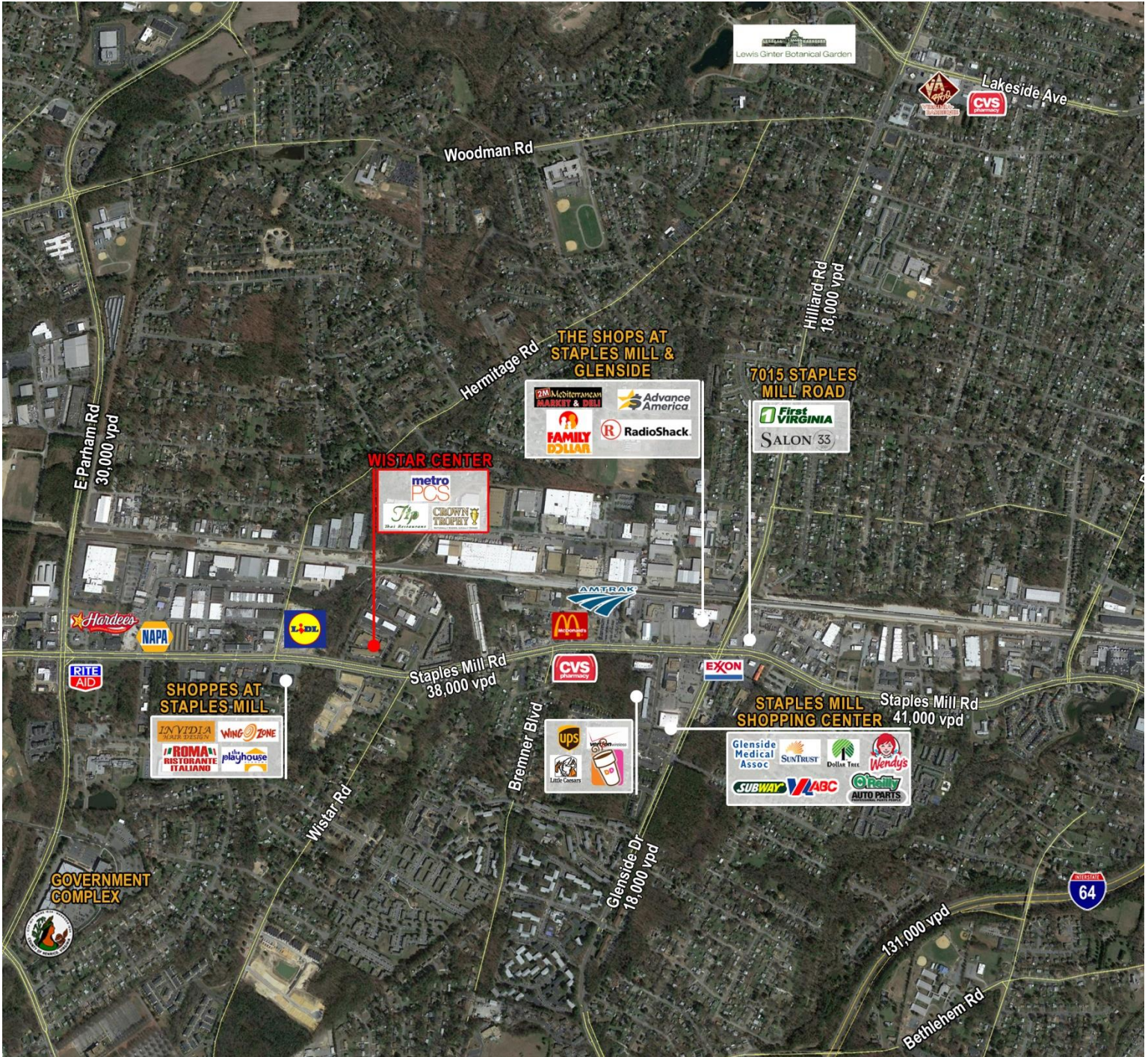
Thalhimer Center
11100 W. Broad Street
Glen Allen, VA 23060
www.thalhimer.com

Independently Owned and Operated / A Member of the Cushman & Wakefield Alliance

Cushman & Wakefield | Thalhimer © 2015. No warranty or representation, expressed or implied, is made to the accuracy or completeness of the information contained herein, and same is submitted subject to errors, omissions, change of price, rental or other conditions, withdrawal without notice, and to any special listing conditions imposed by the property owner(s). As applicable, we make no representation as to the condition of the property (or properties) in question.

RETAIL/OFFICE/WAREHOUSE FOR LEASE
Wistar Center

8101-8157 Staples Mill Rd. | Henrico County, VA



For more information, contact:

DAWN M. CALABRESE, CCIM
 Vice President
 804 697 3406
 dawn.calabrese@thalhimer.com

Thalhimer Center
 11100 W. Broad Street
 Glen Allen, VA 23060
 www.thalhimer.com

Independently Owned and Operated / A Member of the Cushman & Wakefield Alliance

Cushman & Wakefield | Thalhimer © 2015. No warranty or representation, expressed or implied, is made to the accuracy or completeness of the information contained herein, and same is submitted subject to errors, omissions, change of price, rental or other conditions, withdrawal without notice, and to any special listing conditions imposed by the property owner(s). As applicable, we make no representation as to the condition of the property (or properties) in question.