

1,164 SF University Landing Unit 10

413 S College Rd, Wilmington, NC 28403

Listing ID: 29920483
Status: Active
Property Type: Retail-Commercial For Lease
(also listed as Shopping Center)
Retail-Commercial Type: Street Retail
Contiguous Space: 1,164 SF
Total Available: 1,164 SF
Lease Rate: \$13.50 PSF (Annual)
Base Monthly Rent: \$1,309
Lease Type: NN
Ceiling: 10 ft.



Overview/Comments

1,164 sq foot retail unit in middle of University landing. This unit is for sale or lease. Priced at \$13.50 PSF plus \$2.40 CAM. This U shaped strip center is close proximity to UNCW and student housing. The 2017 UNCW student enrollment is 15,740. The 1,164 SF +/- unit has one bathroom, storage room, and small office/work room in the back. Dimensions 20 x 60.

General Information

Taxing Authority: WM
Tax ID/APN: 314705.07.2599.030
Retail-Commercial Type: Street Retail, Other
Zoning: R-B WILMINGTON
Building Name: University Landing

Available Space

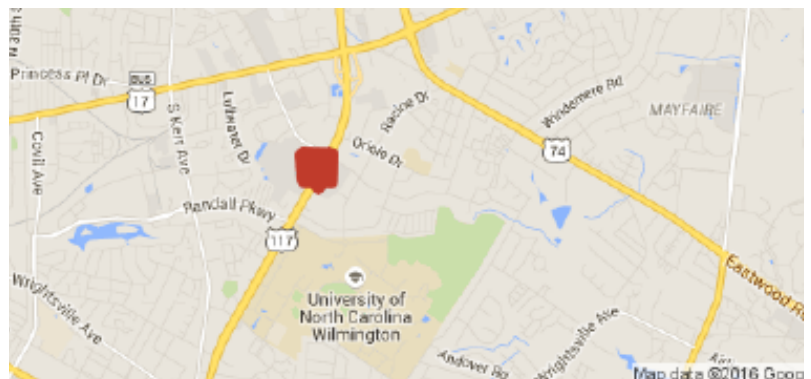
Suite/Unit Number: 10
Space Available: 1,164 SF
Minimum Divisible: 1,164 SF
Maximum Contiguous: 1,164 SF
Space Subcategory 1: Strip Center
Space Description: 1,164 SF Office/Retail in University Landing,
Condo for sale or lease
Space Type: New
Zoning Description: RB
Lot Depth: 60
Water Service: Municipal

Date Available: 12/17/2015
Lease Term (Months): 36 Months
Lease Rate: \$13.50 PSF (Annual)
Lease Type: NN
Parking Spaces: 8
CAM Expenses: \$2.40 PSF (Annual)
Rent Escalators: Other
Rent Escalators Description: 3% per year

Sewer Type: Municipal
Legal Description: Shop 10 University Landing

Location

Address: 413 S College Rd, Wilmington, NC 28403
County: New Hanover
MSA: Wilmington



**Eastern Carolinas
Commercial**
REAL ESTATE

432 LANDMARK DR, UNIT 4 - WILMINGTON, NC 28412
WWW.ECCRENC.COM
O: 910.399.4602
F: 910.399.4675

Area & Location

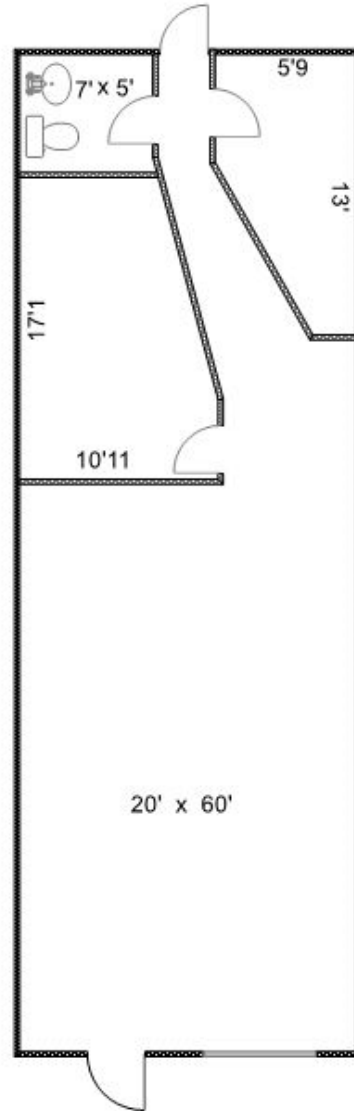
Retail Clientele: General, Family, Business, Traveler, Tourist, Other
Property Located Between: College Road near UNCW
Property Visibility: Good
Largest Nearby Street: Market
Traffic/Vehicle Count: 64,576

Building Related

Total Number of Buildings: 3
Number of Stories: 1
Typical SF / Floor: 1,164 SF
Property Condition: Average
Year Built: 1986
Year Renovated: 2000
Roof Type: Flat
Construction/Siding: Brick, Brick/Vinyl Siding
Exterior Description: Brick front with large plate glass windows
Total Parking Spaces: 8
Parking Type: Structure

Highway Access: Off College Road
Airports: 3 miles
Site Description: Strip Center U shaped with private professional offices and local retail, restaurants.
Area Description: Very close to UNCW, walking distance to school.

Parking Description: Parking front and rear
Ceiling Height: 10
Passenger Elevators: 0
Freight Elevators: 0
Sprinklers: None
Heat Type: Electricity
Heat Source: Heat Pump
Air Conditioning: Engineered System
Internet Access: Cable
Interior Description: 20X60 +/- with bathroom and storage in rear



Contact for More Information:

Garry Silivanch
910.617.2163
garry@eccrenc.com

Bernadette Silivanch
910.617.2198
berny@eccrenc.com



**Eastern Carolinas
Commercial**
REAL ESTATE

432 LANDMARK DR, UNIT 4 - WILMINGTON, NC 28412
WWW.ECCRENC.COM
O: 910.399.4602
F: 910.399.4675