

NorthWest Crossing  
Neighborhood Office Suite  
Suite 211: 336 SF | \$900/Mo. FS Gross

**FOR LEASE**  
2755 NW Crossing Dr.  
Bend, Oregon



*Second Floor Space with Excellent Views*



Jay Lyons, SIOR, CCIM | Grant Schultz, Broker  
600 SW Columbia St., Ste. 6100 | Bend, OR 97702  
541.383.2444 | [www.compasscommercial.com](http://www.compasscommercial.com)

**COMPASS**   
Commercial  
Navigating Your Success REAL ESTATE SERVICES

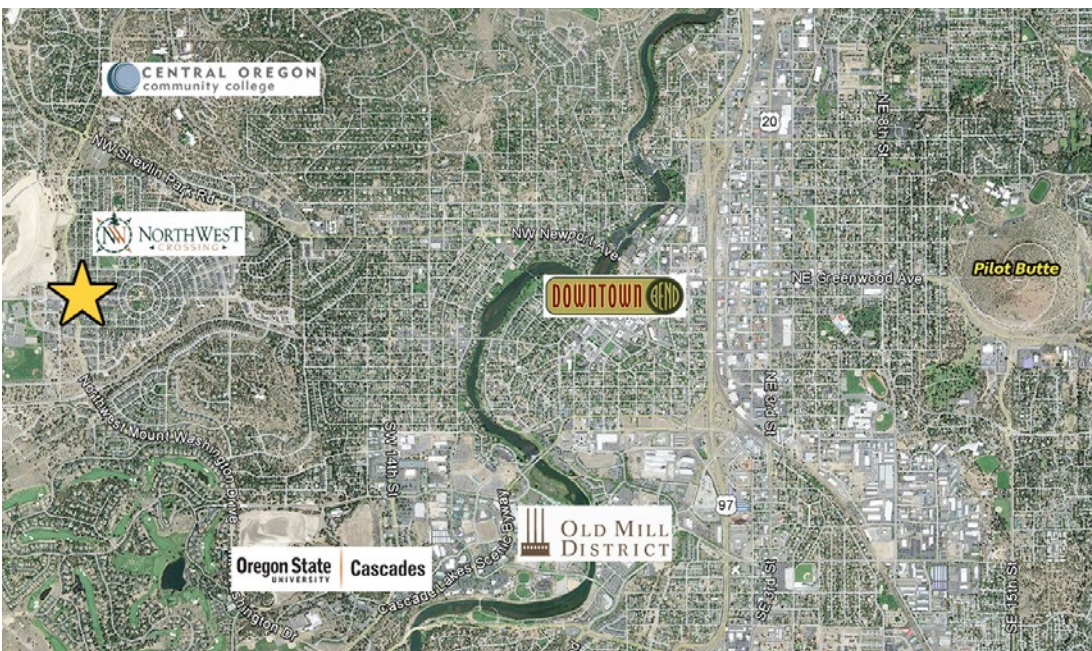
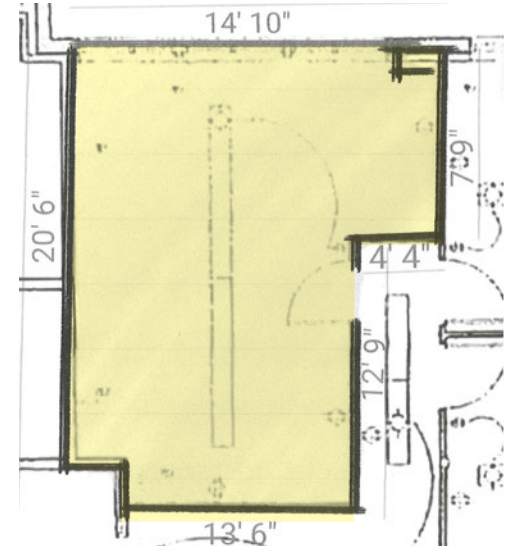
# Office Space in NorthWest Crossing

**FOR LEASE**  
2755 NW Crossing Dr.  
Bend, Oregon

Be a part of Bend's most unique pedestrian-friendly community where people live, shop, eat and do business. The neighborhood includes tenants such as Umpqua Bank, Portello Wine Cafe, Tate & Tate, Sparrow Bakery, Bend Pizza Kitchen, La Rosa and more.

## Highlights

- **Suite 211:** Large executive office with lots of natural light for a single occupant or small company
- LEED-certified, energy efficient building
- Shower available for active tenants
- Generous off-street parking
- Located in award-winning mixed-use community



**Jay Lyons, SIOR, CCIM**  
jlyons@compasscommercial.com



**Grant Schultz, Broker**  
gschultz@compasscommercial.com

**COMPASS** Commercial  
REAL ESTATE SERVICES  
**541.383.2444**

Brokers are licensed in the state of Oregon. This information has been furnished from sources we deem reliable, but for which we assume no liability. This is an exclusive listing. The information contained herein is given in confidence with the understanding that all negotiations pertaining to this property be handled through Compass Commercial Real Estate Services. All measurements are approximate.