



## OFFICE/RETAIL SPACE FOR LEASE 930 E Boot Road, West Chester, PA

### **Ideal for health conscious tenants**

**Individual space with private entrance, bathrooms, operable windows, and no common areas**



### PROPERTY FEATURES

- 1917 SF
- Close proximity to Routes 202 and 100
- 2 floors with windows, vaulted ceilings, and abundant lighting
- Charming open floor plan, private office, 2 ADA bathrooms and kitchenette in unit
- Signage available—building and pylon
- Newly painted and carpeted
- Excellent visibility 12,000 TPD

**Price: \$16.50/SF + utilities**  
**Special incentive for year 1 of lease**

FOR MORE INFORMATION OR FOR AN APPOINTMENT PLEASE CONTACT



677 Exton Commons  
Exton, PA 19341

**STEVE JANIEC**  
Senior Associate  
610-524.8397  
sjaniec@briterealty.com

**JESSI AYOUB**  
Sales and Leasing Associate  
610-524-8421  
jayoub@briterealty.com



930 Boot Road, West Chester, PA —Suite 300



**VIEW OF WHOLE BUILDING**



**BACK OF UNIT**



**PLYON SIGNAGE AVAILABLE**

930 Boot Road, West Chester, PA —Suite 300



**OPEN SPACE/ENTRANCE  
1ST FLOOR**



**OFFICE  
1ST FLOOR**



**OPEN SPACE  
2ND FLOOR**

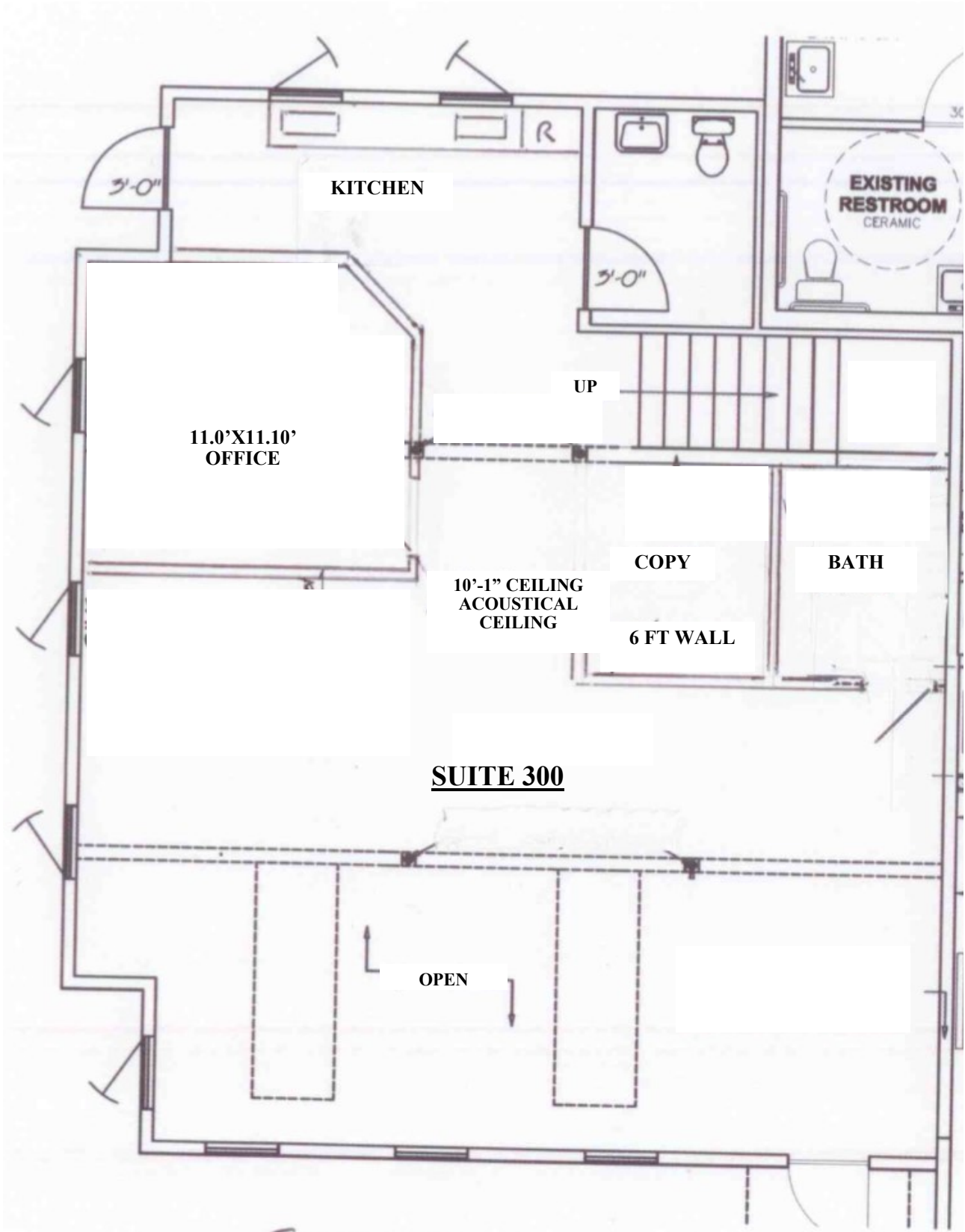


**OPEN SPACE  
2ND FLOOR**



**KITCHENETTE  
1ST FLOOR**

930 Boot Road, West Chester, PA —Suite 300



930 Boot Road, West Chester, PA —Suite 300

