

FOR LEASE



Property Features

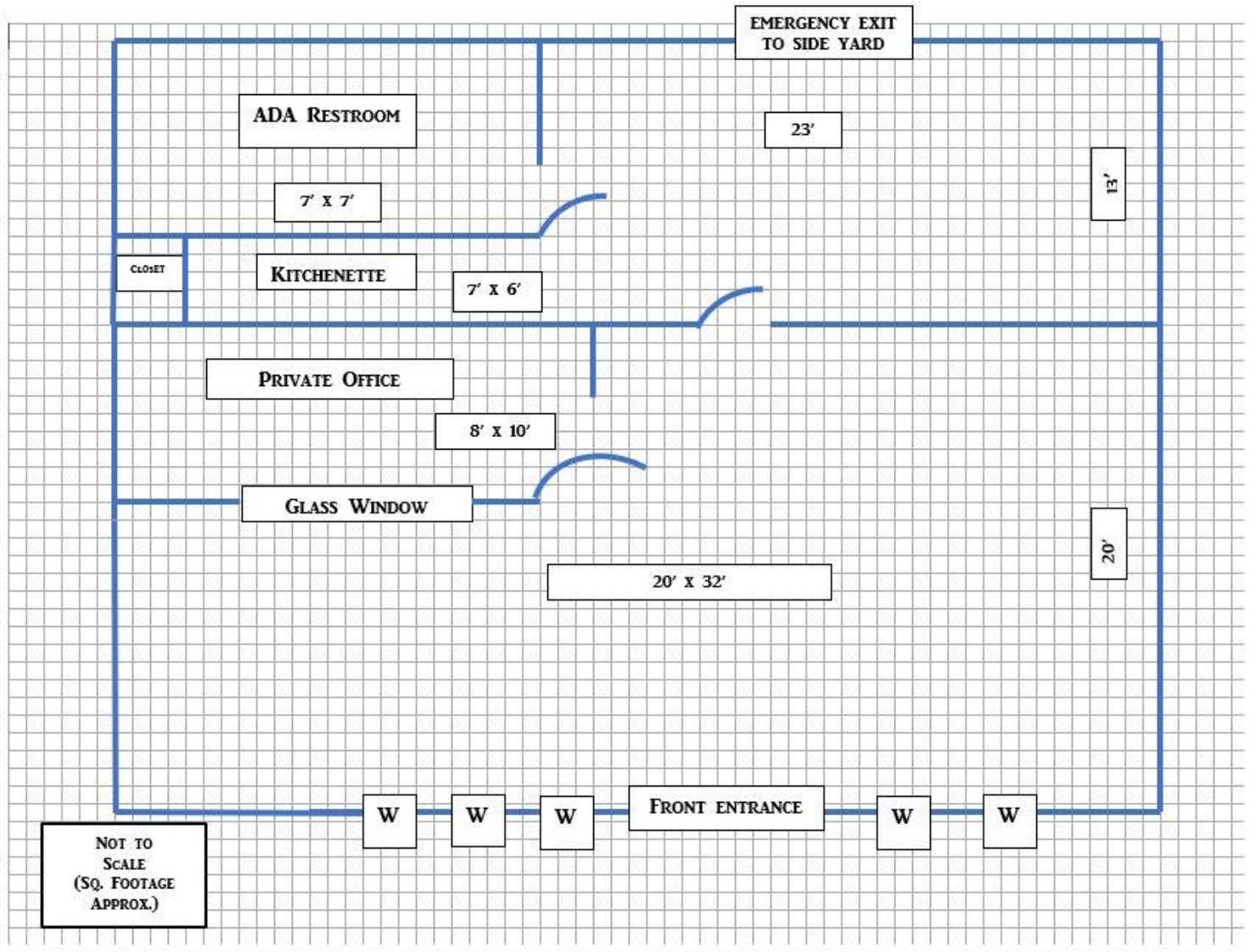
- 1,165 sq. ft. (approx.).
- Inviting Lobby (room for 2–3 desks).
- Private Office.
- Partially Furnished.
- Private Restroom.
- Storage, Break/Conference Room.
- Very clean and located in a well-maintained complex.
- Easy access to Highway 198.
(Please see reverse side for floor plan)



For more information contact:

Clare Whitlatch, GRI
Broker Associate, DRE License #01898351
559-737-1189
clare@whitlatch.net

527 SOUTH PINKHAM STREET VISALIA, CA



For more information contact:

Clare Whitlatch, GRI

Broker Associate, DRE License #01898351

559-737-1189

clare@whitlatch.net