

FOR SALE — Commercial or Light Industrial

US Hwy 1 N (Stokes Landing Rd) St. Augustine, FL 32095

PROPERTY DESCRIPTION

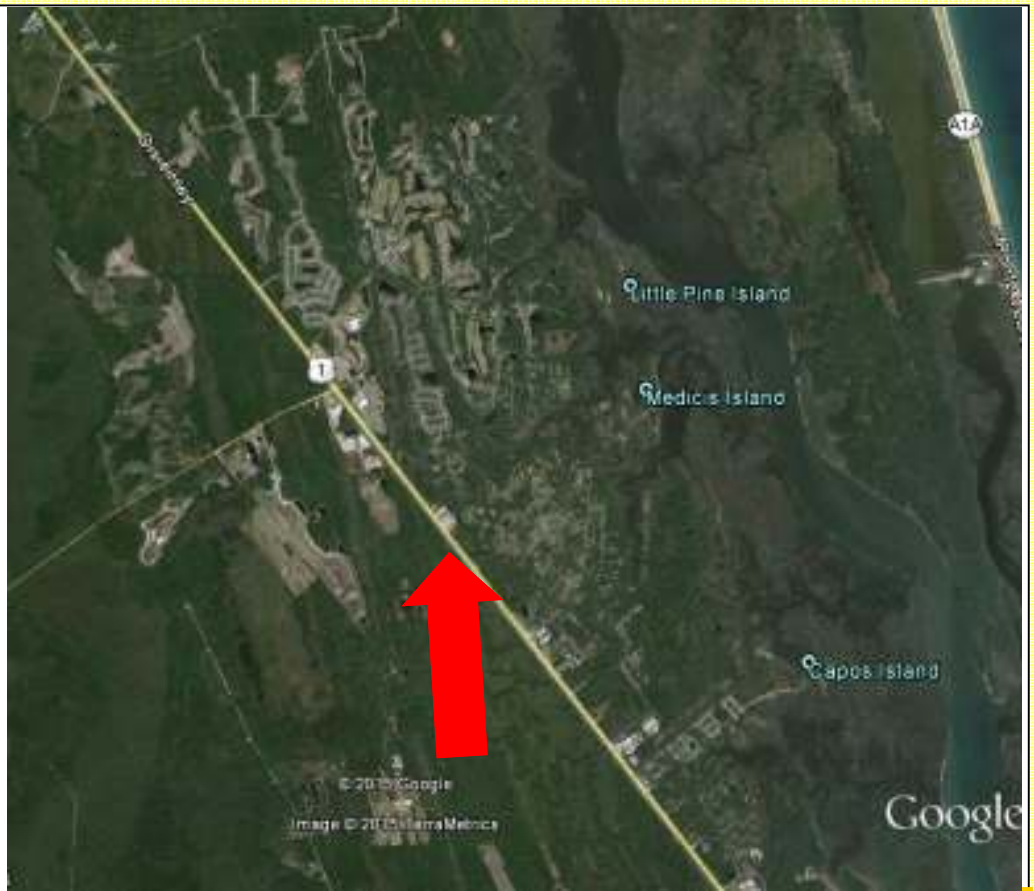
Acres: 13.03
Land Use: Md

Perfect Location for an Industrial Park/ Flex Space from which service providers could access Nocatee, World Golf Village, Palencia, World Golf Village, St. Augustine and Ponte Vedra. Potential retail site.

PRICE REDUCED
PRICE & TERMS
\$1,500,000
~~**\$1,645,201**~~



LoopNet ID #19051241



CALL TO MAKE AN APPOINTMENT

PAUL PORTER
(904) 421-7400



PAULPORTER@WATSONCOMMERCIAL.COM