

FOR LEASE

109 Harrison Panama City, FL 32401

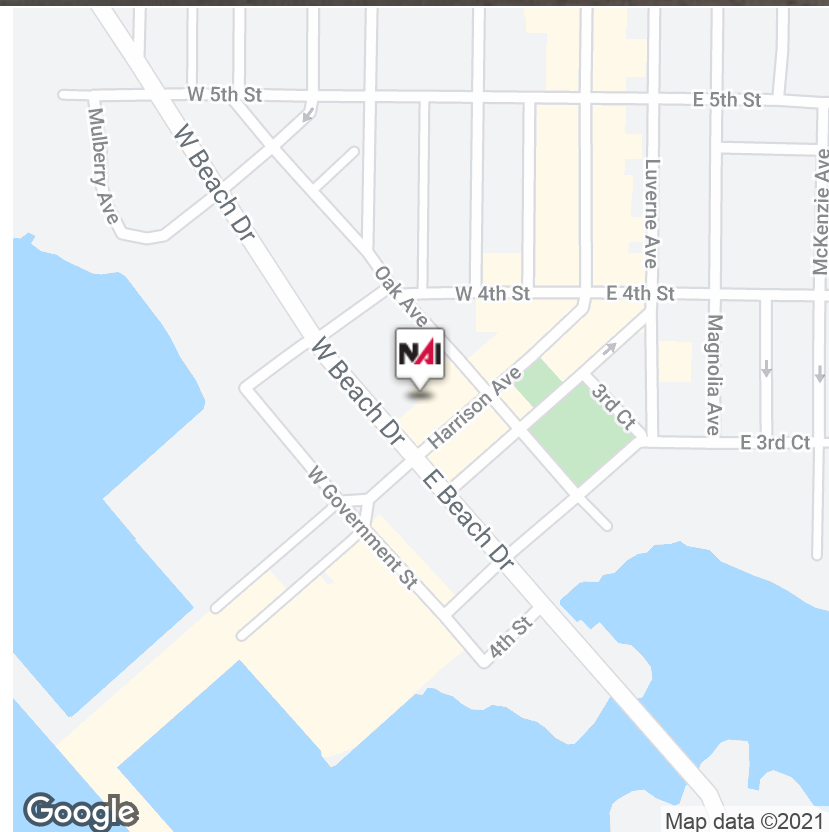


Office/Retail | 1,475 SF

- Excellent visibility & location in revitalizing downtown Panama City
- Currently in shell condition, Landlord to contribute \$10.00 SF in tenant improvement.
- Additional tenant improvements is negotiable
- Historic Building circa 1923

Available Spaces

Spaces	Lease Rate	Size (SF)
109 Harrison Ave	\$15.00 SF/yr	1,475



FOR LEASE

109 Harrison Panama City, FL 32401



PROPERTY DESCRIPTION

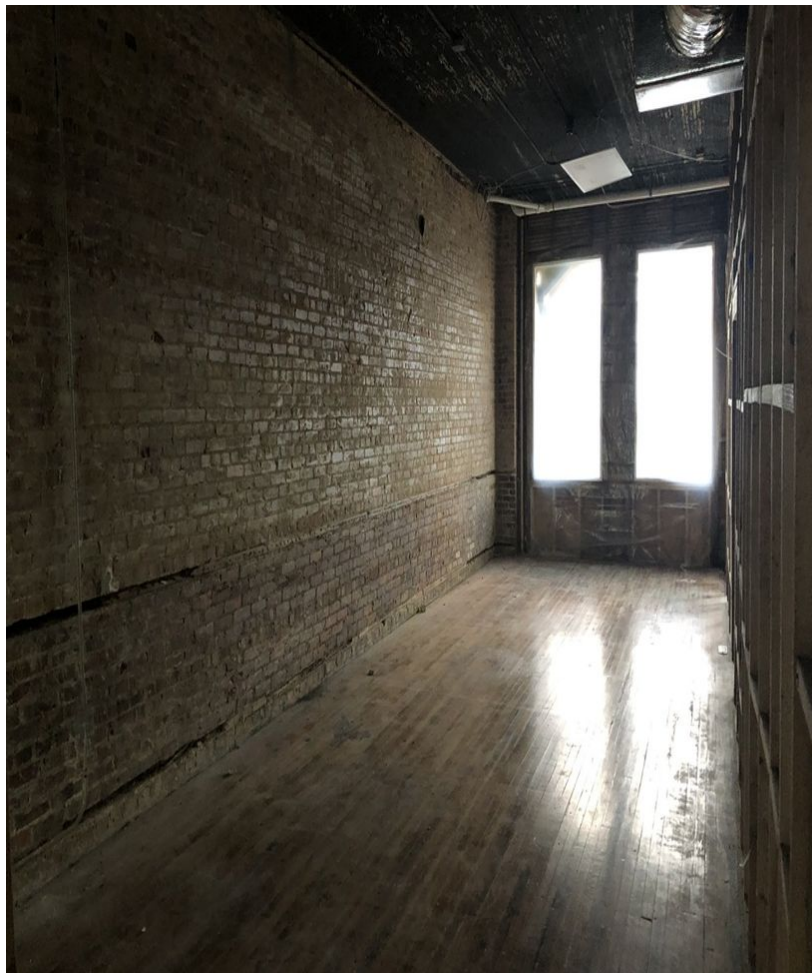
This +/-1,475 SF Retail/Office circa 1923 Historic Building is one block from Panama City Marina, two blocks from Visual Arts Center of NW Florida making this a desirable location in the heart of Historic Downtown Panama City. Property is within walking distance to local government agencies, Bay County Court House, lawyer offices, retail shops, galleries, local dining establishments. The property also has rear parking lot as well as street parking in front of the office building. The inside of the space has some exposed brick from when the building was originally constructed and offers the opportunity for you to buildout the space to fit your needs.

LOCATION DESCRIPTION

This property is located on Harrison Ave in the heart of Historic Downtown Panama City, Florida. Just blocks from St. Andrews Bay.

FOR LEASE

109 Harrison Panama City, FL 32401



✉ Patrick Jones, SIOR
+1 850 814 5878
patrick@talcor.com

No Warranty Or Representation, Express Or Implied, Is Made As To The Accuracy Of The Information Contained Herein, And The Same Is Submitted Subject To Errors, Omissions, Change Of Price, Rental Or Other Conditions, Prior Sale, Lease Or Financing, Or Withdrawal Without Notice, And Of Any Special Listing Conditions Imposed By Our Principals No Warranties Or Representations Are Made As To The Condition Of The Property Or Any Hazards Contained Therein Are Any To Be Implied.

NAITALCOR

FOR LEASE

109 Harrison Panama City, FL 32401



Google

Map data ©2021

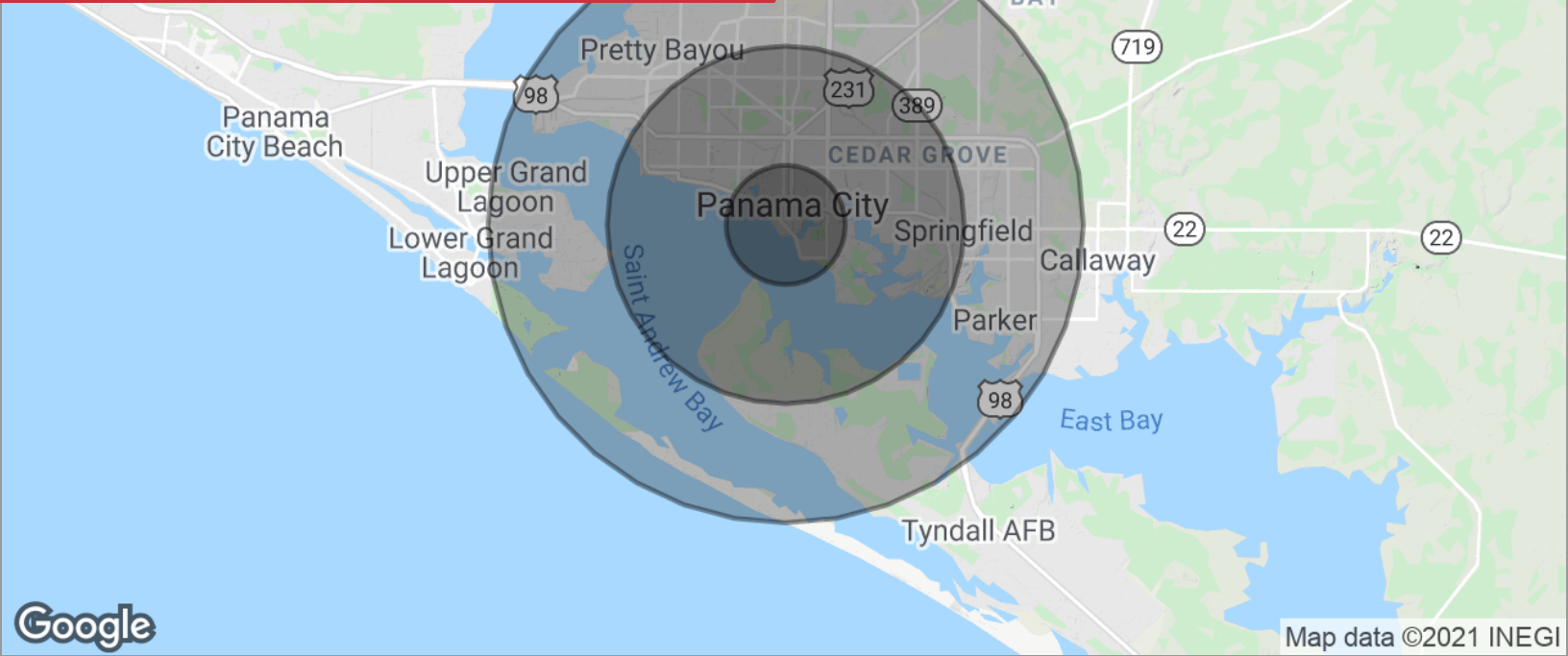
✉ Patrick Jones, SIOR
+1 850 814 5878
patrick@talcor.com

No Warranty Or Representation, Express Or Implied, Is Made As To The Accuracy Of The Information Contained Herein, And The Same Is Submitted Subject To Errors, Omissions, Change Of Price, Rental Or Other Conditions, Prior Sale, Lease Or Financing, Or Withdrawal Without Notice, And Of Any Special Listing Conditions Imposed By Our Principals No Warranties Or Representations Are Made As To The Condition Of The Property Or Any Hazards Contained Therein Are Any To Be Implied.

NAITALCOR

FOR LEASE

109 Harrison Panama City, FL 32401



DEMOGRAPHICS

POPULATION	1 MILE	3 MILES	5 MILES
Total population	5,351	40,510	90,058
Median age	41.3	38.1	38.6
Median age (male)	39.5	37.7	38.0
Median age (Female)	43.3	39.6	39.8
HOUSEHOLDS & INCOME	1 MILE	3 MILES	5 MILES
Total households	2,317	16,653	37,017
# of persons per HH	2.3	2.4	2.4
Average HH income	\$57,093	\$55,305	\$59,751
Average house value	\$228,898	\$210,501	\$193,531

* Demographic data derived from 2010 US Census